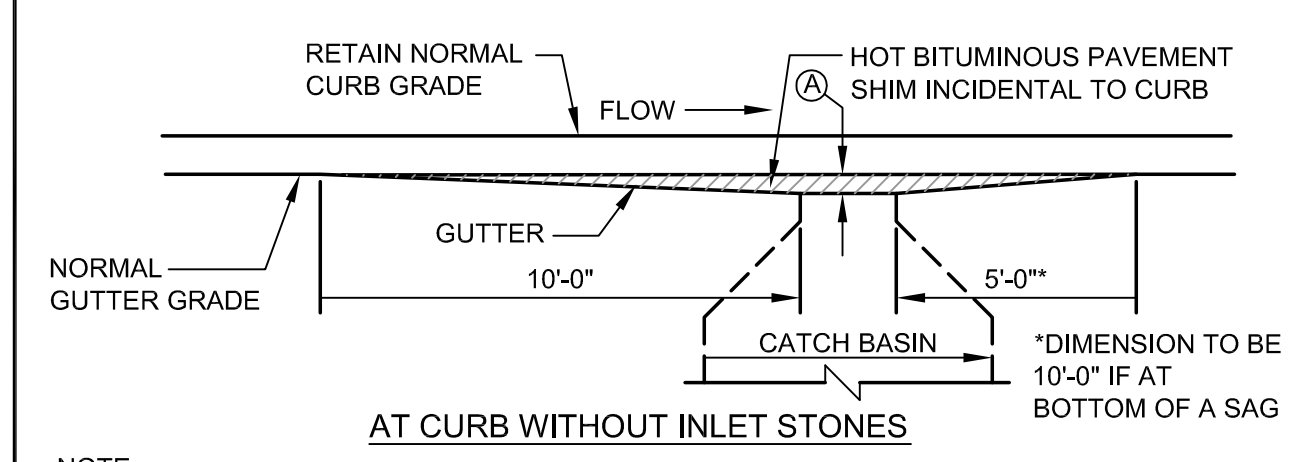
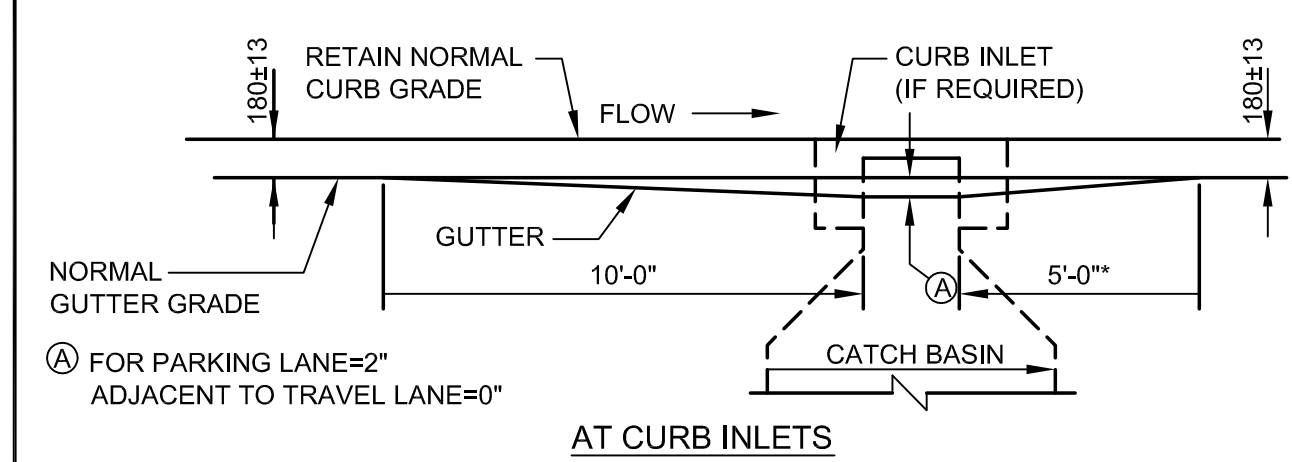


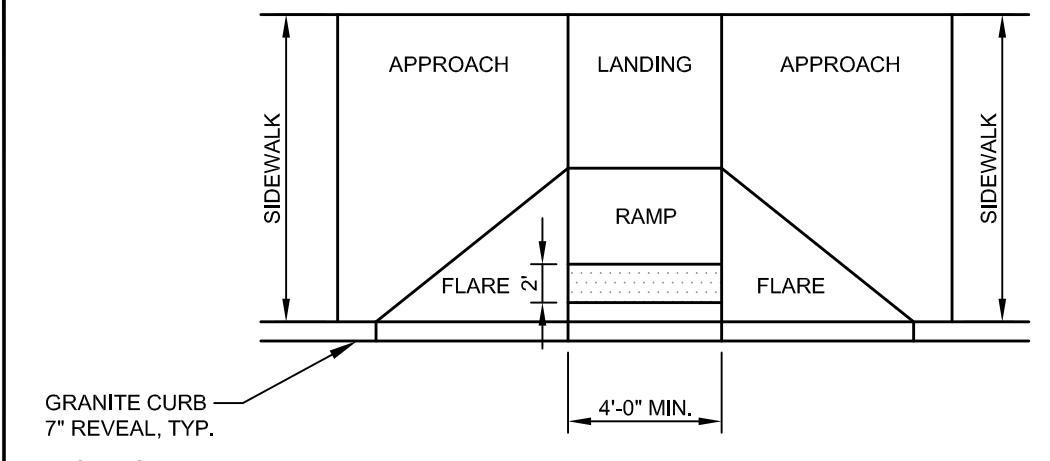
- NOTES:**
1. MAXIMUM LENGTH OF STRAIGHT CURB STONES = 8'
  2. MINIMUM LENGTH OF STRAIGHT CURB STONES = 4'
  3. CIRCULAR CURB REQUIRED FOR RADIUS LESS THAN 50'
  4. GROUT OR CAULK ALL CURB JOINTS OVER 1/2" IN WIDTH. INSTALL STRIP OF FILTER FABRIC BEHIND EACH CURB JOINT.

**(A) VERTICAL GRANITE CURB DETAIL**  
N.T.S.



**NOTE:** GRATES SHALL BE INSTALLED ON GRADIENT OF THE GUTTER AND BE DEPRESSED 50mm BELOW THE NORMAL GUTTER GRADE UNLESS THIS DEPRESSION INTERFERES WITH TRAFFIC.

**(D) GUTTER GRADE TRANSITION AT CATCH BASIN**  
N.T.S.

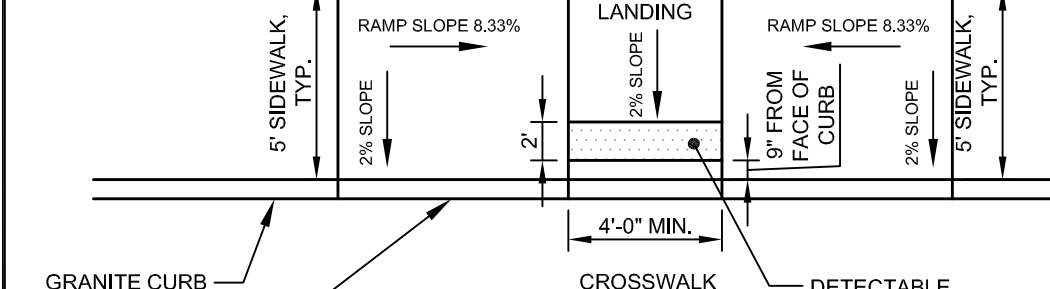


**NOTES:**

1. ALL RAMP SHALL COMPLY WITH ADA STANDARDS.
2. GRANITE CURB ADJACENT TO RAMP SHALL BE FLUSH WITH STREET.

DESIGN ELEMENT	SLOPE IN DIRECTION OF TRAVEL	CROSS SLOPE
APPROACH	0.33% MAXIMUM	2%
LANDING	2%	2%
RAMP	0.33% MAXIMUM	MATCH STREET GRADE
FLARE	10% MAX. AT CURB FACE	2%
SIDEWALK	MATCH STREET GRADE	2%

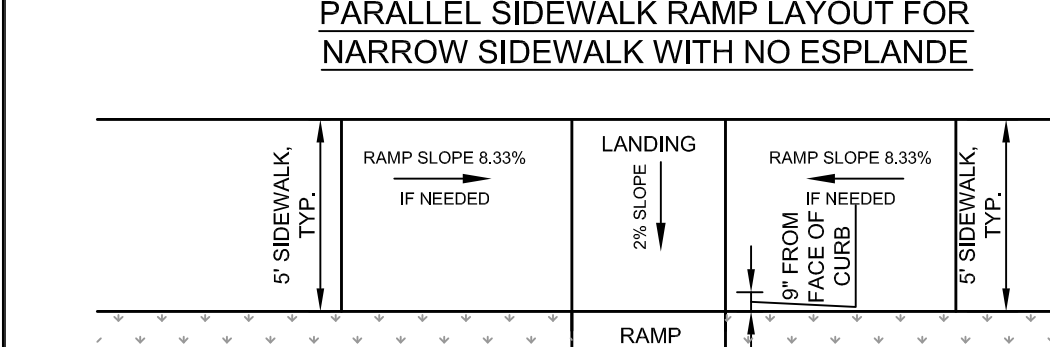
**PERPENDICULAR ADA RAMP LAYOUT FOR WIDE SIDEWALK WITH NO ESPLANADE**



**NOTES:**

1. ALL RAMP SHALL COMPLY WITH ADA STANDARDS.
2. GRANITE CURB ADJACENT TO RAMP SHALL BE FLUSH WITH STREET.
3. SIDEWALK MATERIAL PER CITY SIDEWALK MATERIAL POLICY.

**PARALLEL SIDEWALK RAMP LAYOUT FOR NARROW SIDEWALK WITH NO ESPLANADE**

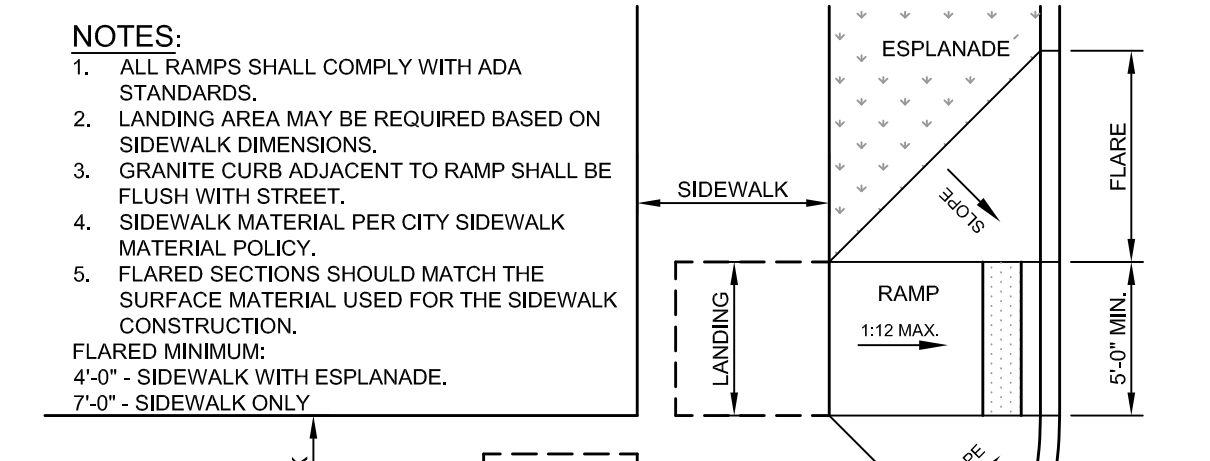


**NOTES:**

1. ALL RAMP SHALL COMPLY WITH ADA STANDARDS.
2. GRANITE CURB ADJACENT TO RAMP SHALL BE FLUSH WITH STREET.
3. SIDEWALK MATERIAL PER CITY SIDEWALK MATERIAL POLICY.

**PERPENDICULAR ADA RAMP LAYOUT FOR NARROW SIDEWALK WITH ESPLANADE**

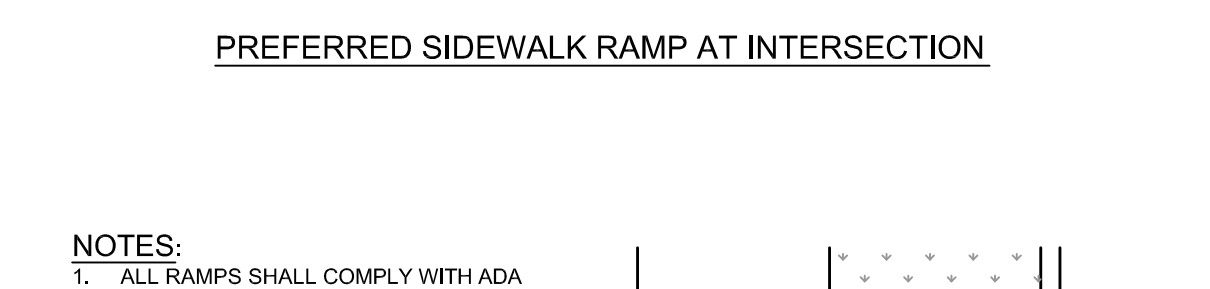
**(F) BARRIER FREE RAMP DETAILS**  
N.T.S.



**NOTES:**

1. ALL RAMP SHALL COMPLY WITH ADA STANDARDS.
2. LANDING AREA MAY BE REQUIRED BASED ON SIDEWALK DIMENSIONS.
3. GRANITE CURB ADJACENT TO RAMP SHALL BE FLUSH WITH STREET.
4. SIDEWALK MATERIAL PER CITY SIDEWALK MATERIAL POLICY.
5. FLARED SECTIONS SHOULD MATCH THE SURFACE MATERIAL USED FOR THE SIDEWALK CONSTRUCTION.
6. FLARE MINIMUM: 4'-0" - SIDEWALK WITH ESPLANADE, 7'-0" - SIDEWALK ONLY.

**PREFERRED SIDEWALK RAMP AT INTERSECTION**



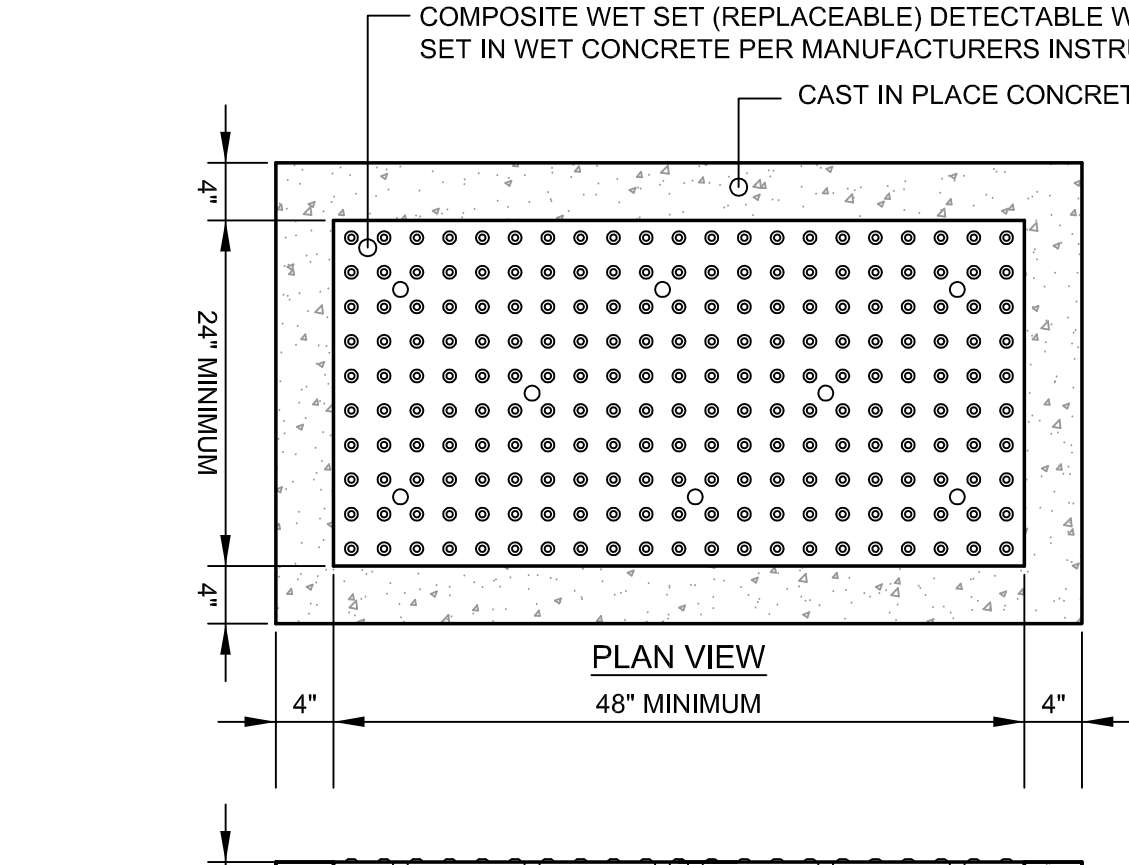
**NOTES:**

1. ALL RAMP SHALL COMPLY WITH ADA STANDARDS.
2. LANDING AREA MAY BE REQUIRED BASED ON SIDEWALK DIMENSIONS.
3. GRANITE CURB ADJACENT TO RAMP SHALL BE FLUSH WITH STREET.
4. SIDEWALK MATERIAL PER CITY SIDEWALK MATERIAL POLICY.

**DIAGONAL SIDEWALK RAMP LAYOUT AT INTERSECTION FOR SIDEWALK WITH ESPLANADE (REQUIRES WAIVER)**

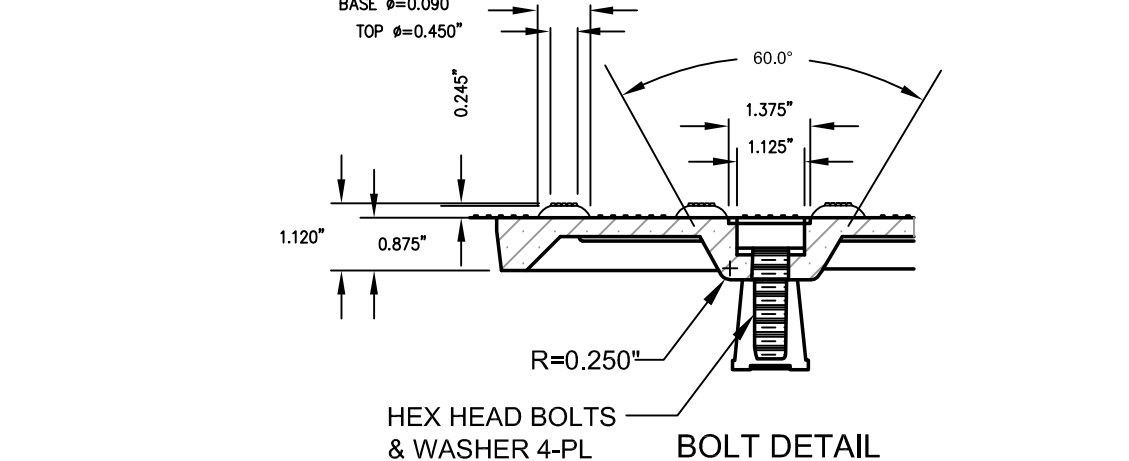
**NOTE:**

1. RAMP SHALL BE CONSTRUCTED IN ACCORDANCE WITH AMERICANS WITH DISABILITIES ACT (ADA).
2. ALL RAMP WITHIN THE CITY OF PORTLAND RIGHT-OF-WAY (SEWALL STREET AND THOMPSON POINT CONNECTOR ROAD) SHALL HAVE DETECTABLE WARNINGS: THE FULL DEPTH AND WIDTH OF THE RAMP PER SECTION 4.09 OF THE ADA. DETECTABLE WARNINGS SHALL CONSIST OF RAISED TRUNCATED DOMES A DIAMETER OF 0.90 INCHES, A HEIGHT OF NOMINAL 0.20 INCHES AND A SPACING OF 2.35 INCHES CENTER TO CENTER. THESE SHALL CONTRAST VISUALLY WITH ADJOINING SURFACES.
3. A TACTILE WARNING STRIP IS REQUIRED WHERE RAMP ADJUTS AREA USED BY MOTORIZED VEHICLES.
4. ALL TACTILE WARNING STRIPS SHALL BE SET PERPENDICULAR TO DIRECTION OF CROSS WALK.



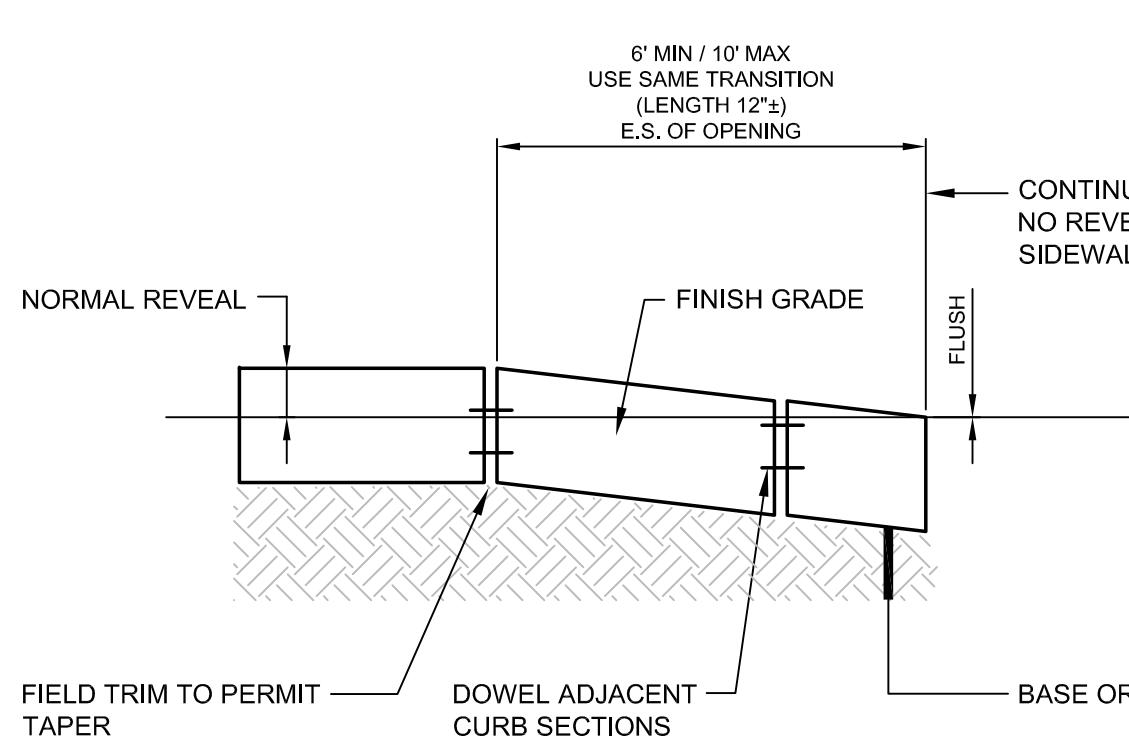
**NOTE:** USE NEAR VERTICAL MOLD WHEN ADJACENT TO SIDEWALK

**(E) SLIPFORM CONCRETE CURB DETAIL - SLOPED MOLD**  
N.T.S.



- NOTES:**
1. COMPOSITE WET SET (REPLACEABLE) DETECTABLE WARNING PANELS SHALL BE AS MANUFACTURED BY ADA SOLUTIONS, INC. (WWW.ADATILE.COM) OR APPROVED EQUAL.
  2. CAST IN PLACE CONCRETE SHALL MEET SPECIFICATIONS FOR MAINE D.O.T. CLASS A STRUCTURAL CONCRETE, MINIMUM COMPRESSIVE STRENGTH 4,000 PSI. THE CONCRETE SHALL BE SEALED PRIOR TO SETTING PANELS. THE EXPOSED CONCRETE BORDER SHALL RECEIVE A GROOVED EDGE BETWEEN THE PANEL AND CONCRETE, ALONG WITH A UNIFORM BROOM FINISH PERPENDICULAR TO THE FLOW OF PEDESTRIAN TRAFFIC.
  3. TRUNCATED DOMES SHALL BE ALIGNED IN ROWS, PARALLEL AND PERPENDICULAR TO THE PREDOMINANT DIRECTION OF TRAVEL. TRUNCATED DOME BRICKS AND GRANITE PAVERS ARE NOT ALLOWED.
  4. FOR ALL DETECTABLE WARNING PANELS (EXCEPT AS SPECIFIED IN FIGURE 17A AND TECHNICAL MANUAL SECTION 1.8.4), FEDERAL YELLOW COLORED (6335B) PANELS SHALL BE USED. FOLLOW MANUFACTURER'S INSTRUCTIONS FOR INSTALLATION.
  5. SIZE: THE DETECTABLE WARNING PANEL(S) SHALL EXTEND 24 INCHES MINIMUM IN THE DIRECTION OF TRAVEL AND THE FULL WIDTH OF THE CURB RAMP, LANDING, OR BLENDED TRANSITION TO THE STREET.
  6. ORIENTATION: THE DETECTABLE WARNING PANEL SHALL BE LOCATED SO THAT THE EDGE NEAREST THE CURB LINE IS 6 INCHES MINIMUM AND 8 INCHES MAXIMUM FROM THE CURB LINE. THE PANEL SHALL BE ORIENTED TO THE DIRECTION OF TRAVEL AS IDENTIFIED BY THE POINT OF EGRESS.

**(B) DETECTABLE WARNING PAVER DETAIL**  
N.T.S.



**(C) SLOPE OF GRANITE CURB AT ADA RAMPS AND DRIVEWAYS**  
N.T.S.

REV	DATE	DESCRIPTION
2	08.17.16	FINAL PLAN SUBMISSION TO CITY
1	09.01.15	FINAL BRICK SOUTH LEVEL III SITE PLAN APPLICATION

PROJECT: BRICK NORTH AND SOUTH BUILDINGS AT THE FOREFRONT AT THOMPSON'S POINT

SHEET TITLE: CURBING AND SIDEWALK DETAILS

CLIENT: FOREFRONT PARTNERS | LP

DATE: APRIL 2015

SCALE: AS NOTED

JOB NO. 195350044

FILE NAME: 2982.05-8S DET

SHEET: C-8.1

**STANTEC CONSULTING SERVICES INC.**

482 PAYNE ROAD  
SCARBOROUGH, ME 04074  
WWW.STANTEC.COM

Stantec

BO KENNEDY  
No. 11984  
08.17.15  
PROFESSIONAL ENGINEER

P.E. BO KENNEDY  
LIC. #11994