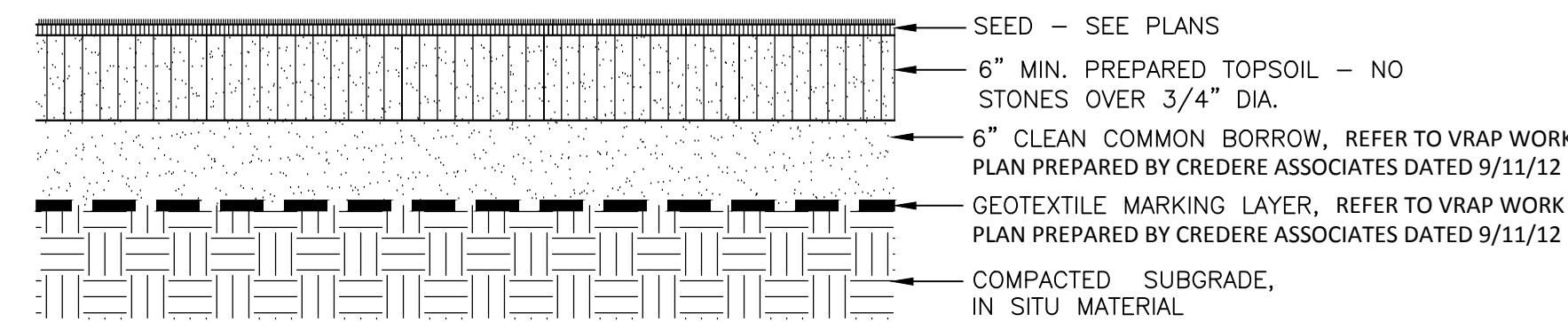


PLANT SCHEDULE - TREES

QTY.	SYM.	BOTANICAL NAME	COMMON NAME	SIZE	REMARKS	NATIVE
6	AC	AMELANCHIER CANADENSIS	SERVICEBERRY	8-10' HT.	B&B, MULTI-STEM	X
11	AR	ACER RUBRUM	RED MAPLE	2.5' CAL.	B&B	X
11	BP	BETULA PAPPYRIFERA 'RENAISSANCE REFLECTION'	PAPER BIRCH	10-12' HT.	B&B, MULTI-STEM	X
17	GB	GINKGO BILOBA 'AUTUMN GOLD'	AUTUMN GOLD GINKGO	2-2.5' CAL.	B&B	
6	MP	MALUS 'PRAIRIEFIRE'	PRAIRIEFIRE CRABAPPLE	2-2.5' CAL.	B&B	
7	PS	PRUNUS SARGENTII	SARGENT CHERRY	2.5' CAL.	B&B	
16	UA	ULMUS AMERICANA 'PRINCETON'	PRINCETON AMERICAN ELM	2.5' CAL.	B&B	X
5	QB	QUERCUS BICOLOR	SWAMP WHITE OAK	2.5' CAL.	B&B	X
4	TOFF	TREE OF FORTY FRUITS			EXISTING - PLANTED IN 2014	

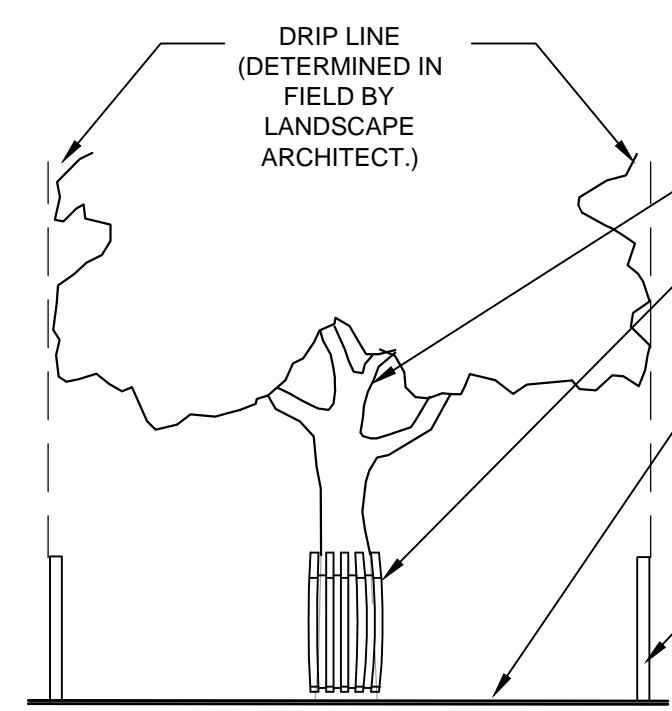
PLANT SCHEDULE - SHRUBS

QTY.	SYM.	BOTANICAL NAME	COMMON NAME	SIZE	REMARKS	NATIVE
132	AU	ARCTOSTAPHYLOS UVA-URSI	BEARBERRY	#3	CONT	X
40	CP	COMPTONIA PEREGRINA	SWEETFERN	#2	CONT	X

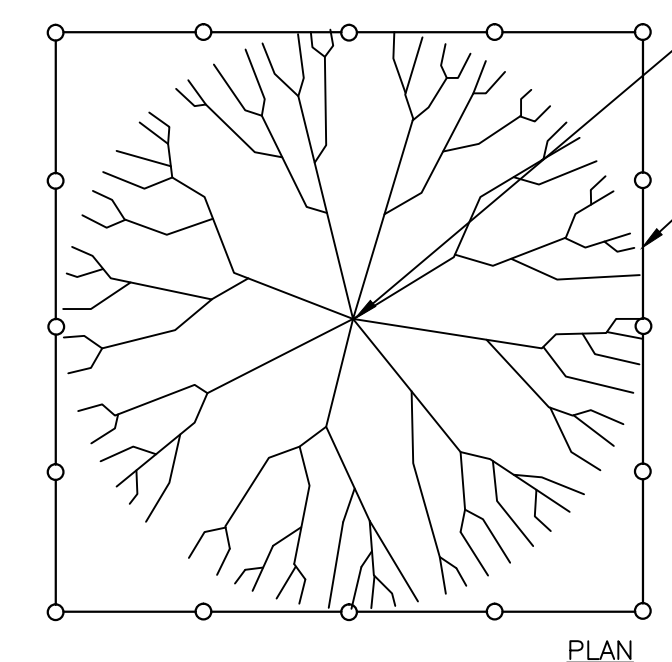


SEEDING LAWN DETAIL

SCALE: N.T.S.



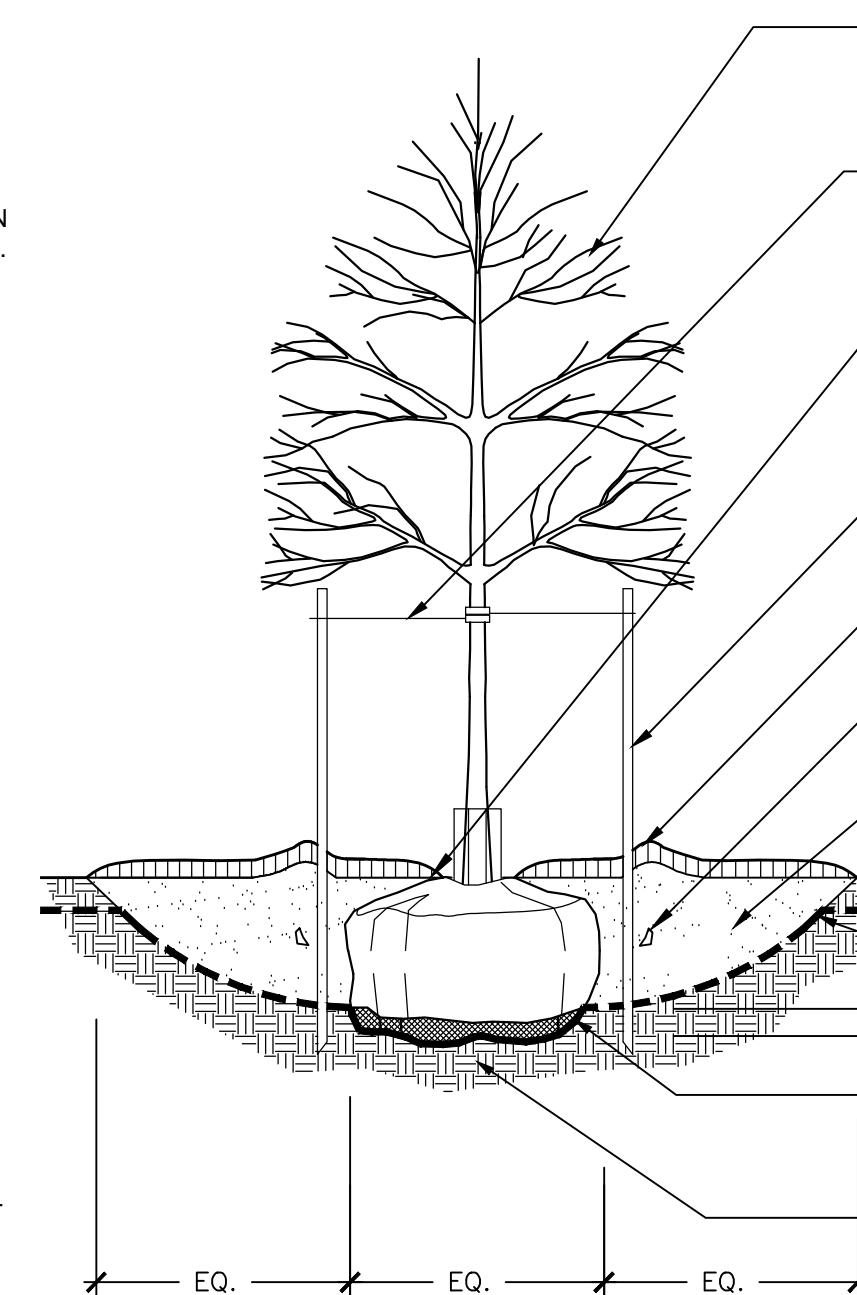
ELEVATION



PLAN

TREE PROTECTION DETAIL

SCALE: N.T.S.

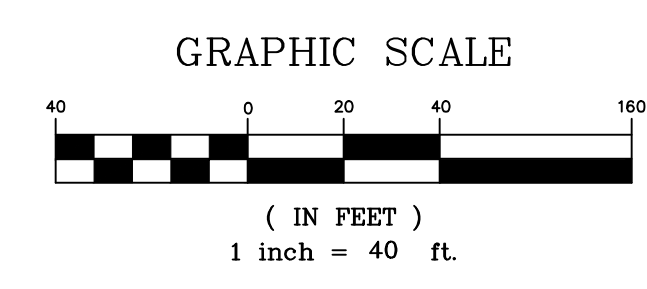
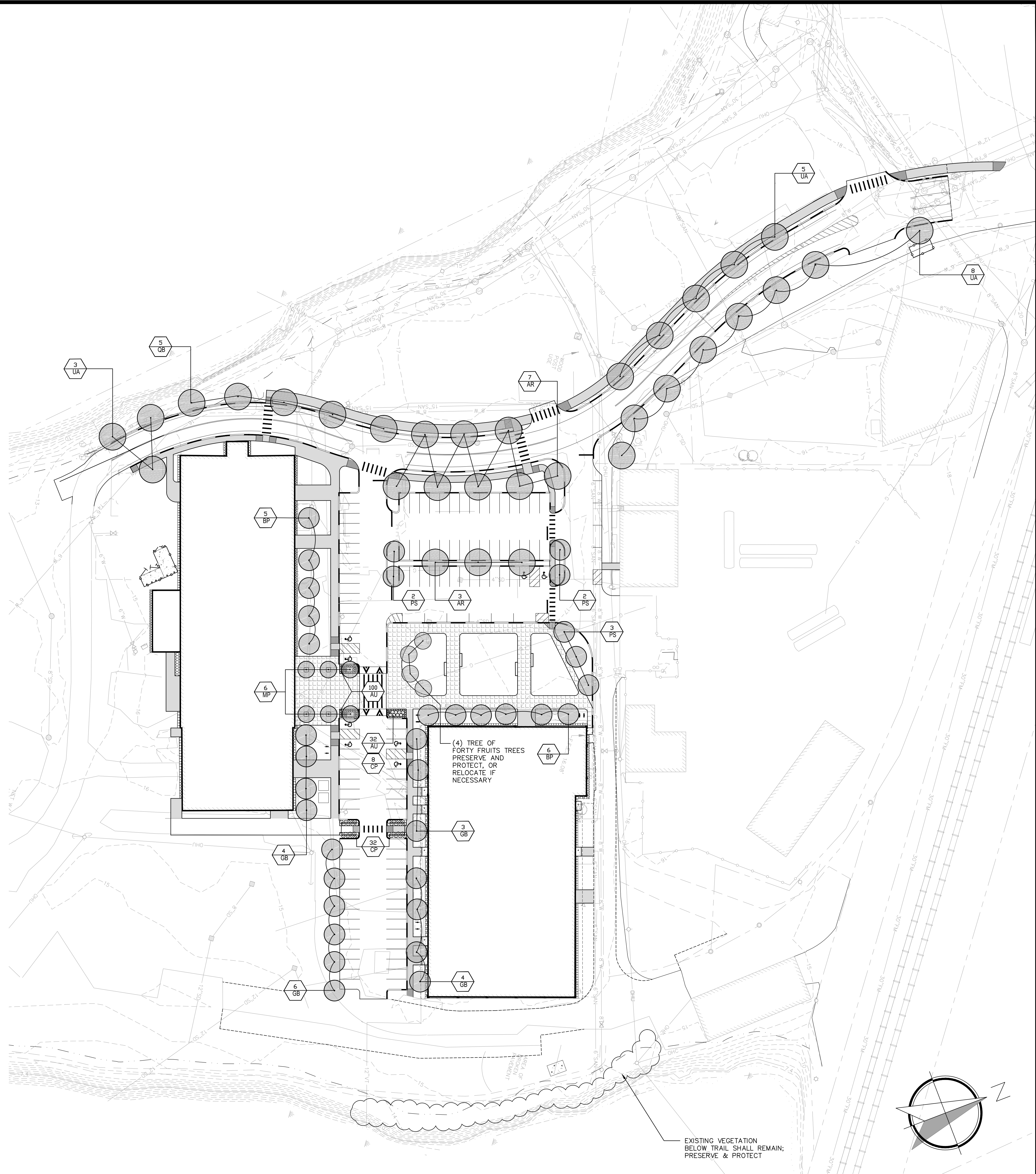


TREE PLANTING DETAIL

SCALE: N.T.S.

PLANTING NOTES

- CONTRACTOR SHALL BEGIN MAINTENANCE IMMEDIATELY AFTER PLANTING AND SHALL CONTINUE UNTIL FINAL ACCEPTANCE. CONTRACTOR SHALL BE RESPONSIBLE FOR ALL MEANS AND METHODS OF WATERING AND MAINTENANCE.
- CONTRACTOR SHALL SUPPLY PLANTS IN QUANTITIES SUFFICIENT TO COMPLETE WORK SHOWN ON THE PLAN. ANY DISCREPANCY BETWEEN THE QUANTITIES SHOWN IN THE PLANT SCHEDULE AND THOSE REQUIRED ON THE PLAN SHALL NOT ENTITLE THE CONTRACTOR TO ADDITIONAL REMUNERATION. ANY DISCREPANCIES SHALL BE CLARIFIED WITH THE LANDSCAPE ARCHITECT PRIOR TO ORDERING PLANT MATERIAL.
- ALL MATERIALS SHALL CONFORM TO SPECIFICATIONS OF THE AMERICAN STANDARDS FOR NURSERY STOCK (LATEST EDITION) AS SET FORTH BY THE AMERICAN ASSOCIATION OF NURSERYMEN.
- ALL PLANTS SHALL BEAR THE SAME RELATIONSHIP TO FINISH GRADE AS THE ORIGINAL GRADES BEFORE DIGGING.
- THE LANDSCAPE CONTRACTOR SHALL GUARANTEE ALL PLANT MATERIALS FOR ONE (1) FULL YEAR FROM DATE OF SUBSTANTIAL COMPLETION.
- ALL PLANT MATERIALS ARE SUBJECT TO THE APPROVAL OF THE LANDSCAPE ARCHITECT AT THE NURSERY AND AT THE SITE.
- ALL PLANT BEDS SHALL MEET MINIMUM TOPSOIL REQUIREMENTS (SEE SPECIFICATIONS).
- NO PLANT MATERIAL SHALL BE INSTALLED UNTIL GRUBBING, BED PREPARATION, AND FINISH GRADING HAS BEEN COMPLETED IN THE IMMEDIATE AREA.
- ALL PLANT BEDS AND TREE WELLS SHALL BE SPADE EDGED, AND SHALL HAVE A MINIMUM OF 3" OF UNIFORMLY DISTRIBUTED, DARK, SHREDDED BARK MULCH. CONTRACTOR SHALL SUBMIT MULCH SAMPLE TO L.A. PRIOR TO INSTALLATION.
- CONTRACTOR SHALL SUBMIT SOIL SAMPLE AND TEST OF TOPSOIL TO LANDSCAPE ARCHITECT PRIOR TO INSTALLATION. SOIL ADMIXTURE SHALL BE ADDED TO EXISTING SOIL (BY CONTRACTOR) IF DEEMED NECESSARY BY SOIL TEST RESULTS.
- ROUGH GRADING AND BED PREPARATION SHALL BE APPROVED BY LANDSCAPE ARCHITECT PRIOR TO PLANT INSTALLATION. CONTRACTOR SHALL NOTIFY LANDSCAPE ARCHITECT 24 HOURS PRIOR TO REQUIRED SITE VISIT.
- ALL PLANTS SHALL BE BALLED AND WRAPPED OR CONTAINER GROWN AS SPECIFIED. ALL ROOT WRAPPING, WIRE BASKETS, AND CONTAINER MATERIAL MADE OF SYNTHETICS OR PLASTICS SHALL BE REMOVED AT THE TIME OF PLANTING.
- ALL BROAD LEAF EVERGREEN PLANTS SHALL BE SPRAYED WITH AN ANTI-DESSICANT AT THE BEGINNING OF THEIR FIRST WINTER.
- ALL PLANTS SHALL BE INSTALLED AS PER DETAILS AND THE CONTRACT SPECIFICATIONS. THE LANDSCAPE CONTRACTOR SHALL REFER TO THE CONTRACT SPECIFICATIONS FOR ADDITIONAL REQUIREMENTS.
- CONTRACTOR SHALL STAKE TREES, IF DEEMED NECESSARY BY PROJECT L.A.
- THE LANDSCAPE CONTRACTOR SHALL PROVIDE LOAM BACKFILL AS PER THE CONTRACT SPECIFICATIONS.
- ALL PLANTS SHALL BE WATERED BY THE CONTRACTOR, AS NECESSARY, TO INSURE HEALTH UNTIL FINAL ACCEPTANCE.
- THE LANDSCAPE CONTRACTOR SHALL REFER TO THE PLANT LIST AND PLANTING SPECIFICATIONS FOR SEASONAL REQUIREMENTS AND OTHER RESTRICTIONS RELATED TO THE TIME AND SEASON OF PLANTING.
- IN GENERAL STREET & PARKING LOT TREES ARE SPACED APPROXIMATELY 45' O.C. - SEE PLAN FOR EXCEPTIONS.
- TREES SHALL BE PLANTED 6" OFF EDGE OF PAVEMENT WHERE POSSIBLE. TREES IN ESPLANADE SHALL BE CENTERED IN ESPLANADE.
- ALL DISTURBED AREAS SHALL BE LOAMED AND SEEDING UNLESS OTHERWISE SPECIFIED.



CARROLL ASSOCIATES
LANDSCAPE ARCHITECTS
217 COMMERCIAL STREET, STE 200
PORTLAND, MAINE 04101
207.772.1552 V. F. 207.772.0212

REV	DATE	DESCRIPTION	REVISIONS

PROJECT
BRICK NORTH AND SOUTH BUILDINGS AT THE FOREFRONT AT THOMPSON'S POINT

CLIENT
FOREFRONT PARTNERS I, LP

LANDSCAPE PLAN

DATE: SEPTEMBER 1, 2015
SCALE: -
JOB NO.: -
FILE NAME: CA-LANDSCAPE-PLAN.DWG
SHEET L-1.0

FAY, SPOFFORD & THORNDIKE
ENGINEERS • PLANNERS • SCIENTISTS
778 MAIN ST, SUITE B, SOUTH PORTLAND, ME 04106