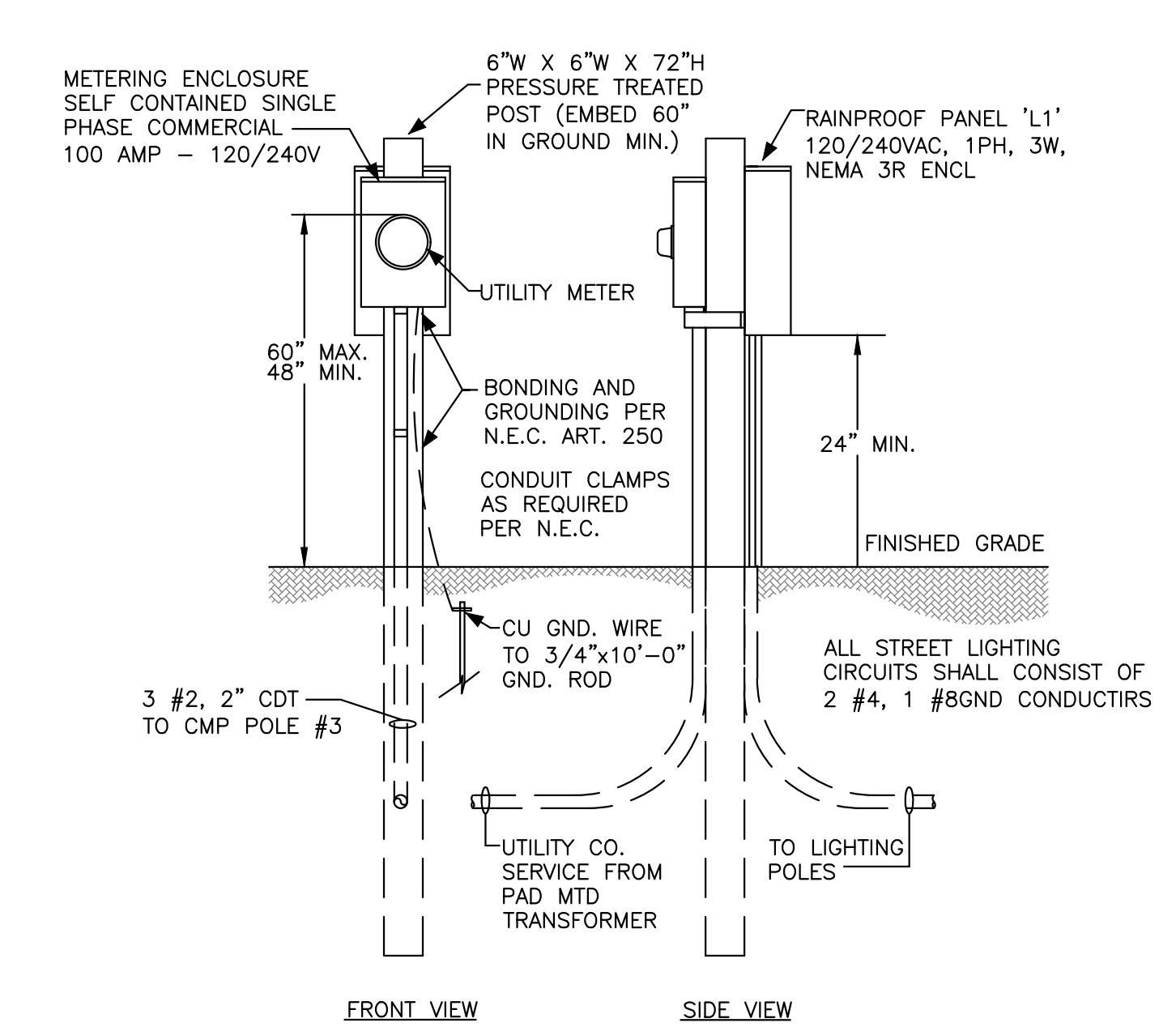
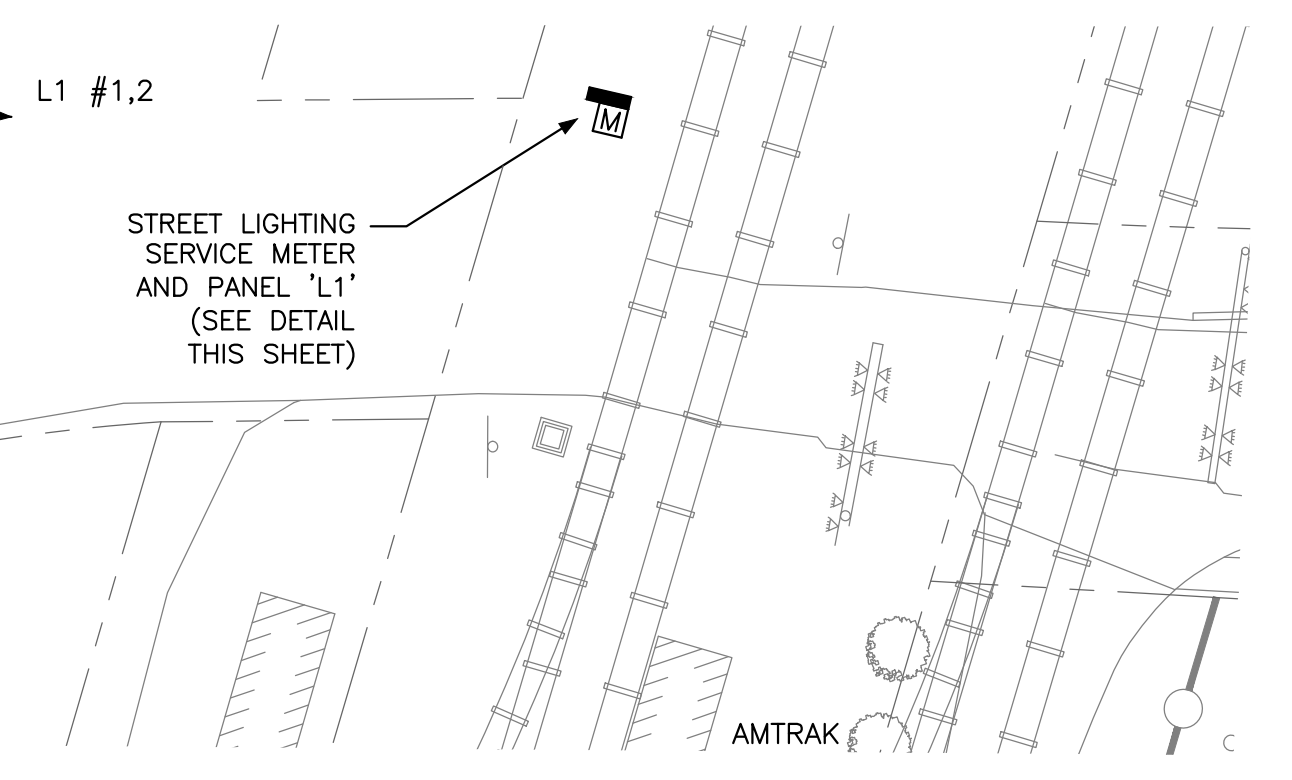
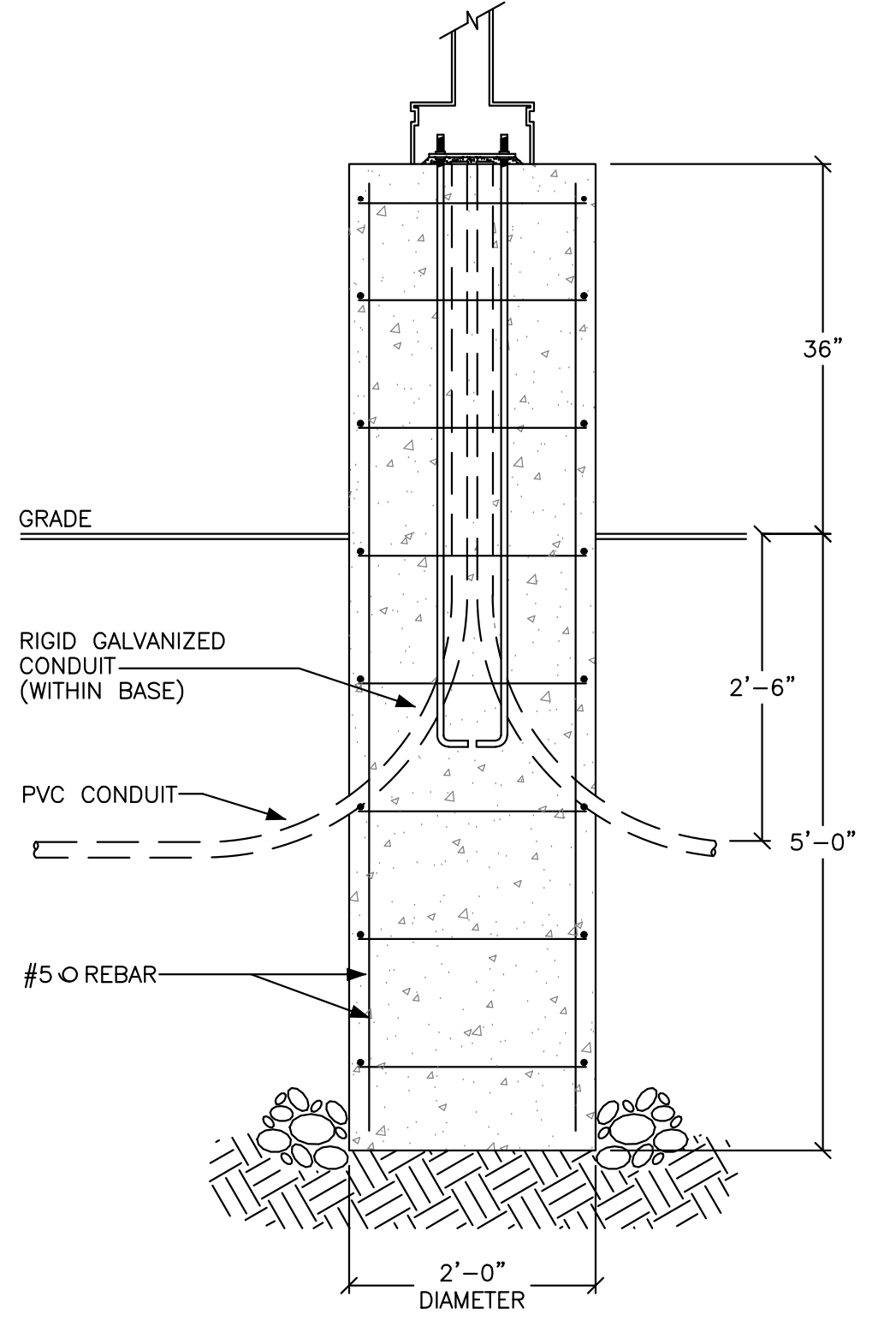


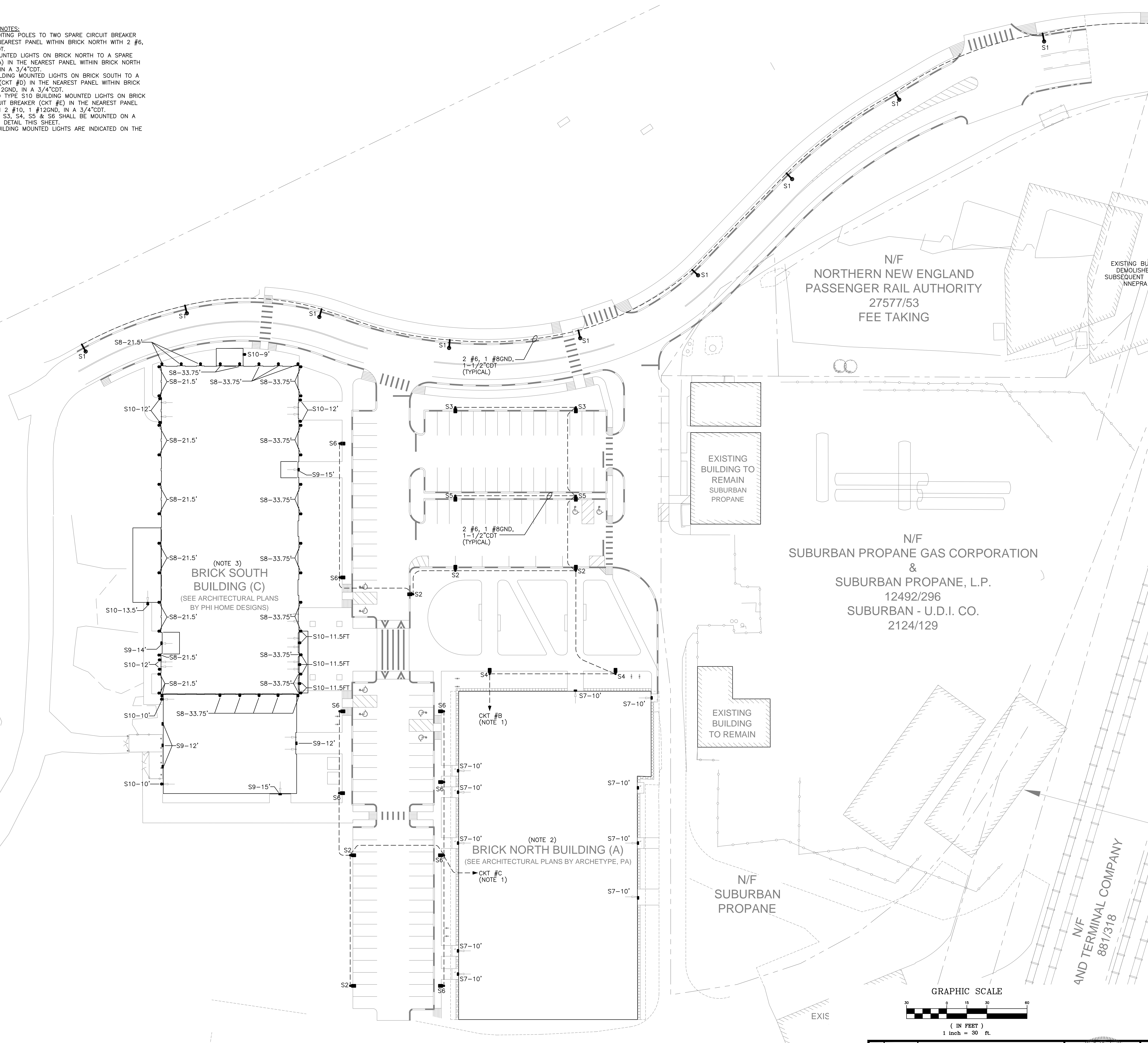
- PHOTOMETRIC LIGHTING PLAN NOTES:
1. CIRCUIT PARKING LOT LIGHTING POLES TO TWO SPARE CIRCUIT BREAKER (CKT #B & #C) IN THE NEAREST PANEL WITHIN BRICK NORTH WITH 2 #6, 1 #8GND, IN A 1-1/2"CDT.
  2. CIRCUIT ALL BUILDING MOUNTED LIGHTS ON BRICK NORTH TO A SPARE CIRCUIT BREAKER (CKT #A) IN THE NEAREST PANEL WITHIN BRICK NORTH WITH 2 #10, 1 #12GND, IN A 3/4"CDT.
  3. CIRCUIT ALL TYPE S8 BUILDING MOUNTED LIGHTS ON BRICK SOUTH TO A SPARE CIRCUIT BREAKER (CKT #D) IN THE NEAREST PANEL WITHIN BRICK SOUTH WITH 2 #10, 1 #12GND, IN A 3/4"CDT.
  4. CIRCUIT ALL TYPE S9 AND TYPE S10 BUILDING MOUNTED LIGHTS ON BRICK SOUTH TO A SPARE CIRCUIT BREAKER (CKT #E) IN THE NEAREST PANEL WITHIN BRICK SOUTH WITH 2 #10, 1 #12GND, IN A 3/4"CDT.
  5. LIGHTING POLE TYPES S2, S3, S4, S5 & S6 SHALL BE MOUNTED ON A 3FT CONCRETE BASE. SEE DETAIL THIS SHEET.
  6. MOUNTING HEIGHTS OF BUILDING MOUNTED LIGHTS ARE INDICATED ON THE DRAWING.



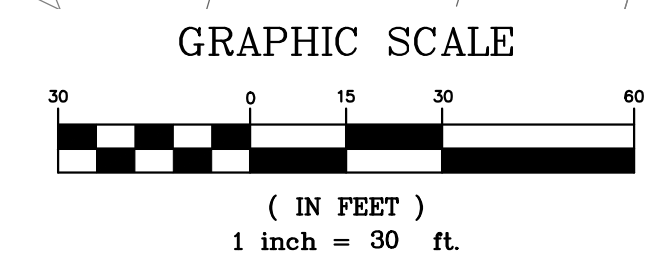
STREET LIGHTING SERVICE METER DETAIL  
NOT TO SCALE



LIGHTING POLE BASE DETAIL  
NOT TO SCALE



LIGHTING PLAN  
1" = 30'-0"



PRELIMINARY

Bartlett Design  
LIGHTING & ELECTRICAL ENGINEERING  
942 WASHINGTON STREET, BATH, ME 04530  
TEL (207) 443-5447 FAX (207) 443-5560

REV	DATE	DESCRIPTION	REVISIONS
3	09.03.15	REVISED LIGHTING	
2	07.22.14	SUBMITTED FOR UTILITY COMPANY REVIEW	
1	07.01.14	SUBMITTED FOR CLIENT REVIEW	

L. BARTLETT  
LIC. #7928

PROJECT  
BRICK NORTH BUILDING AT  
THE FOREFRONT AT THOMPSON'S POINT

SHEET TITLE  
SITE LIGHTING PLAN

CLIENT  
FOREFRONT PARTNERS I, LP

FST  
FAY, SPOFFORD & THORNDIKE  
ENGINEERS · PLANNERS · SCIENTISTS  
778 MAIN ST, SUITE 8, SOUTH PORTLAND, ME 04106

DRAWN: JLC DATE: 07/01/2014  
DESIGNED: LEB SCALE: 1" = 30'-0"  
CHECKED: LEB JOB NO: 2982.05  
FILE NAME:  
SHEET E2.1