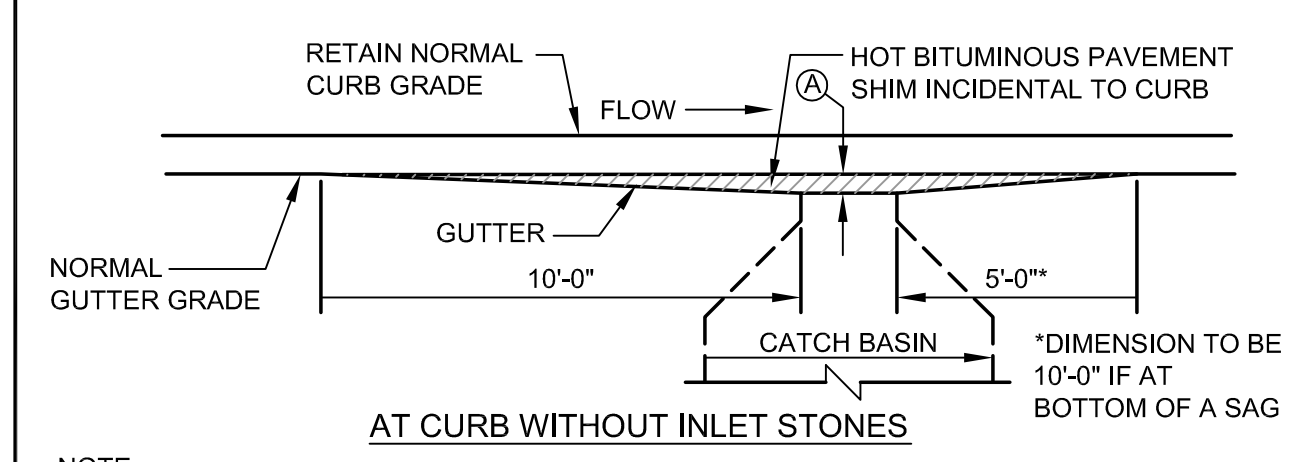
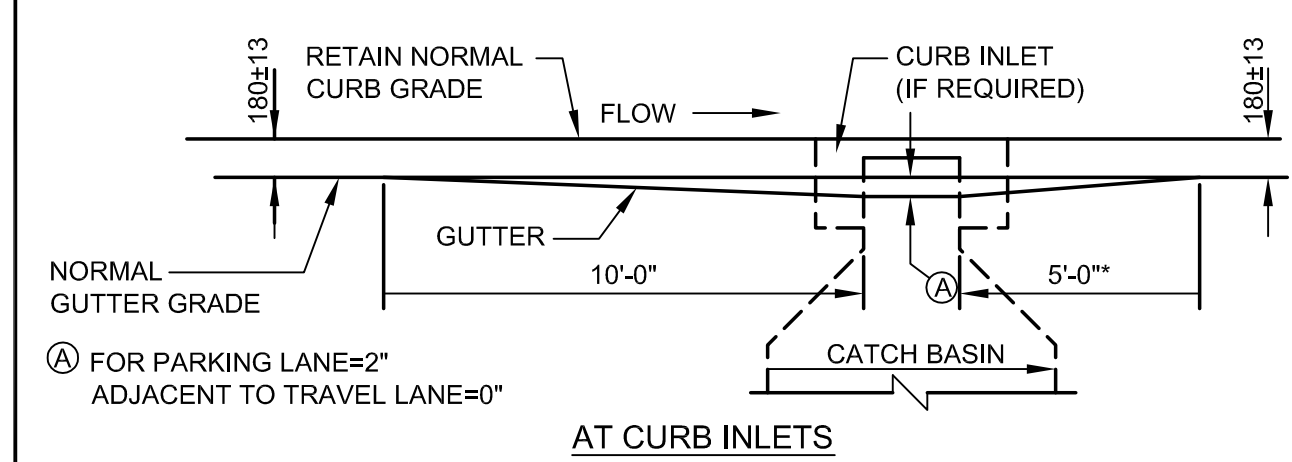


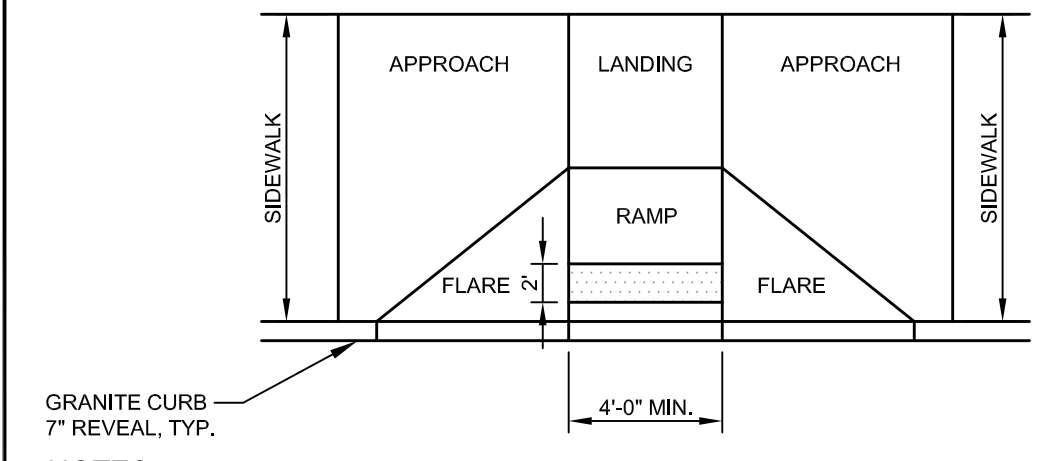
- NOTES:
1. MAXIMUM LENGTH OF STRAIGHT CURB STONES = 8'
 2. MINIMUM LENGTH OF STRAIGHT CURB STONES = 4'
 3. CIRCULAR CURB REQUIRED FOR RADIUS LESS THAN 50'
 4. GROUT OR CAULK ALL CURB JOINTS OVER 1/2" IN WIDTH. INSTALL STRIP OF FILTER FABRIC BEHIND EACH CURB JOINT.

(A) VERTICAL GRANITE CURB DETAIL
N.T.S.



NOTE: GRATES SHALL BE INSTALLED ON GRADIENT OF THE GUTTER AND BE DEPRESSED 50mm BELOW THE NORMAL GUTTER GRADE UNLESS THIS DEPRESSION INTERFERES WITH TRAFFIC.

(D) GUTTER GRADE TRANSITION AT CATCH BASIN
N.T.S.

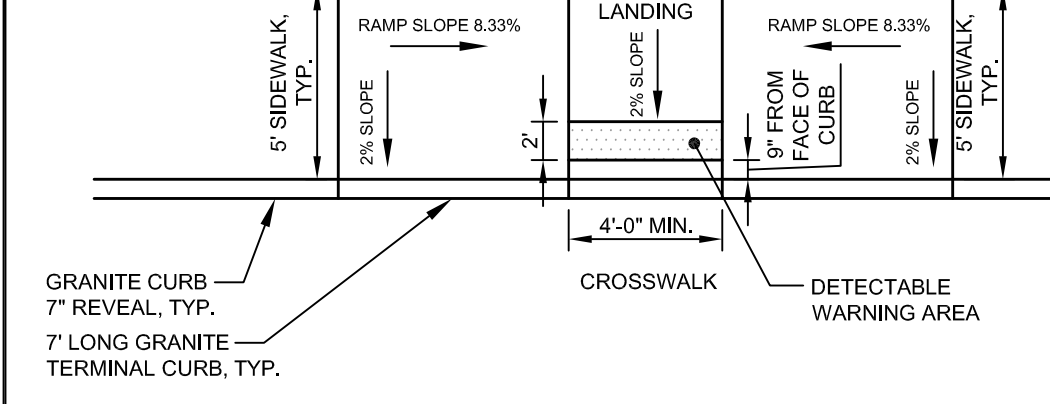


NOTES:

1. ALL RAMP SHALL COMPLY WITH ADA STANDARDS.
2. GRANITE CURB ADJACENT TO RAMP SHALL BE FLUSH WITH STREET.

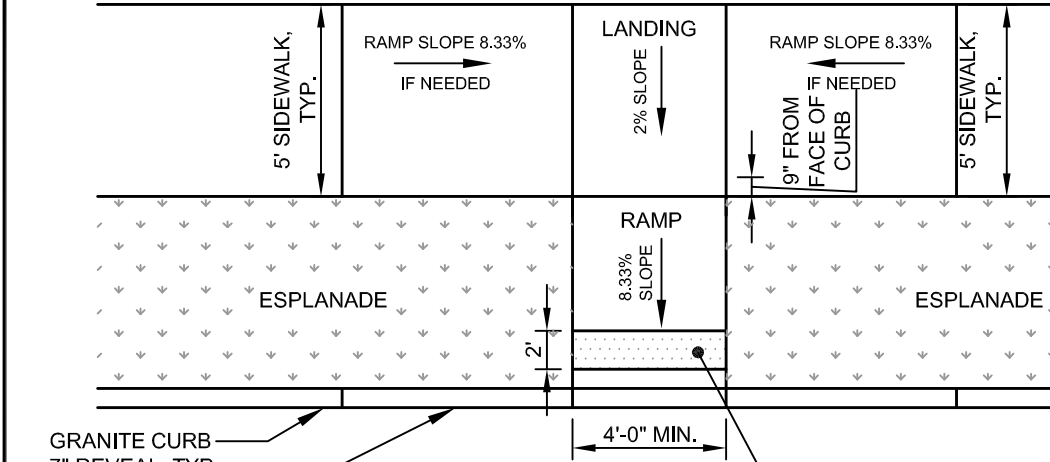
DESIGN ELEMENT	SLOPE IN DIRECTION OF TRAVEL	CROSS SLOPE
APPROACH	0.33% MAXIMUM	2%
LANDING	2%	2%
RAMP	0.33% MAXIMUM	MATCH STREET GRADE
FLARE	10% MAX AT CURB FACE	2%
SIDEWALK	MATCH STREET GRADE	2%

PERPENDICULAR ADA RAMP LAYOUT FOR WIDE SIDEWALK WITH NO ESPLANADE



- NOTES:
1. ALL RAMP SHALL COMPLY WITH ADA STANDARDS.
 2. GRANITE CURB ADJACENT TO RAMP SHALL BE FLUSH WITH STREET.
 3. SIDEWALK MATERIAL PER CITY SIDEWALK MATERIAL POLICY.

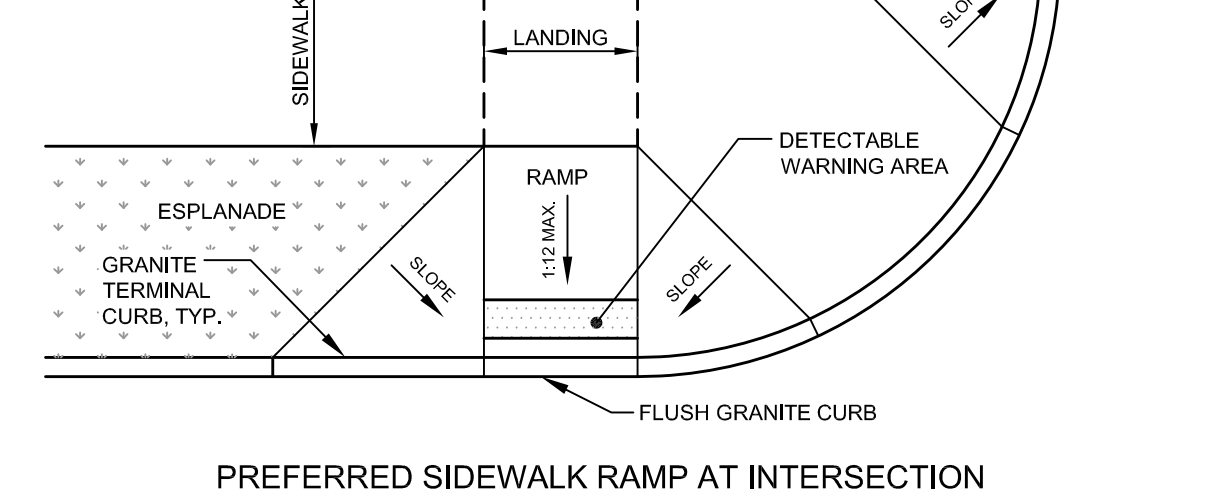
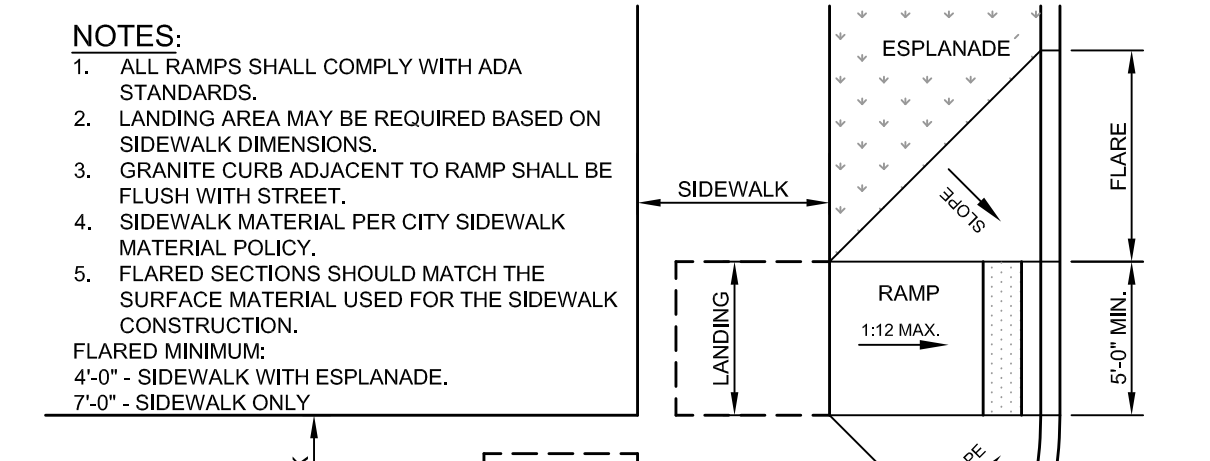
PARALLEL SIDEWALK RAMP LAYOUT FOR NARROW SIDEWALK WITH NO ESPLANADE



- NOTES:
1. ALL RAMP SHALL COMPLY WITH ADA STANDARDS.
 2. GRANITE CURB ADJACENT TO RAMP SHALL BE FLUSH WITH STREET.
 3. SIDEWALK MATERIAL PER CITY SIDEWALK MATERIAL POLICY.

PERPENDICULAR ADA RAMP LAYOUT FOR NARROW SIDEWALK WITH ESPLANADE

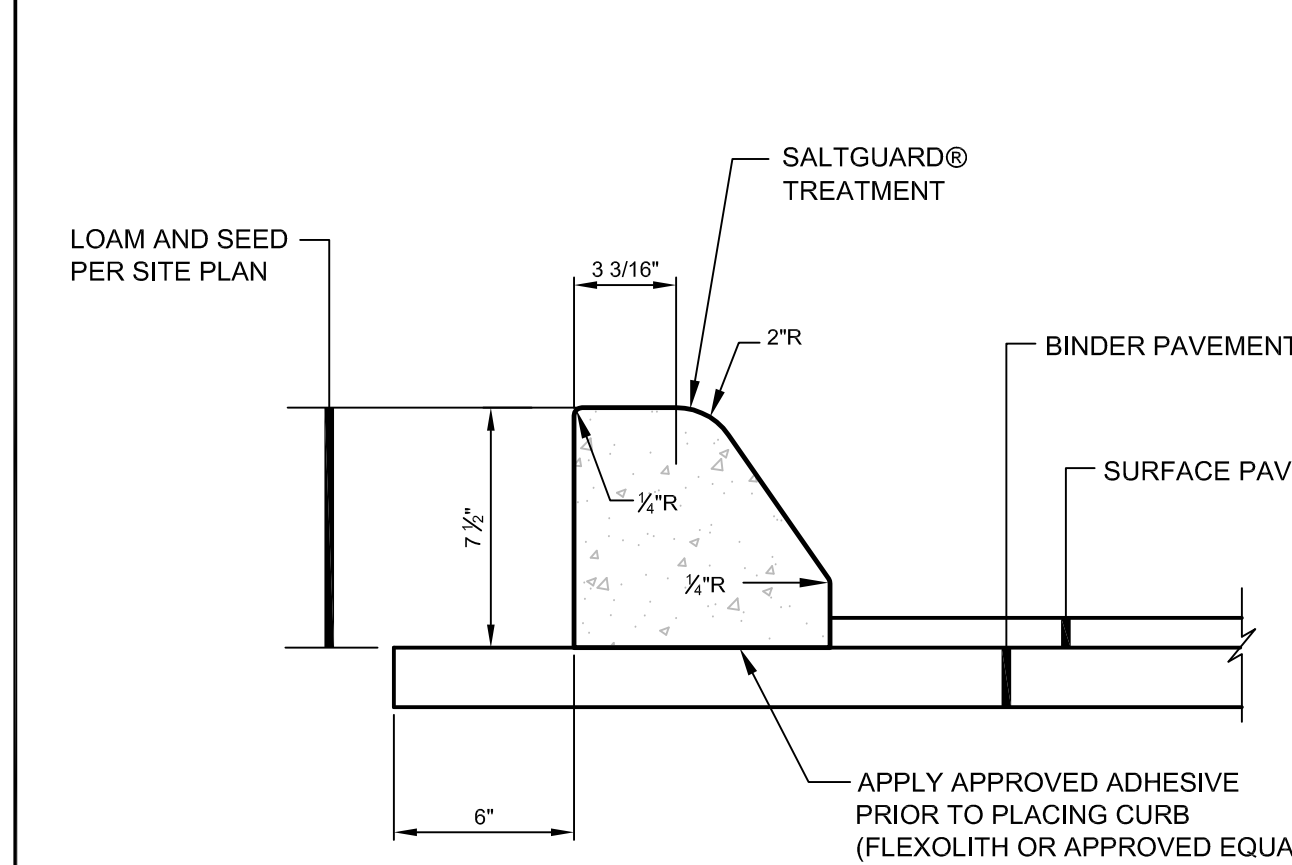
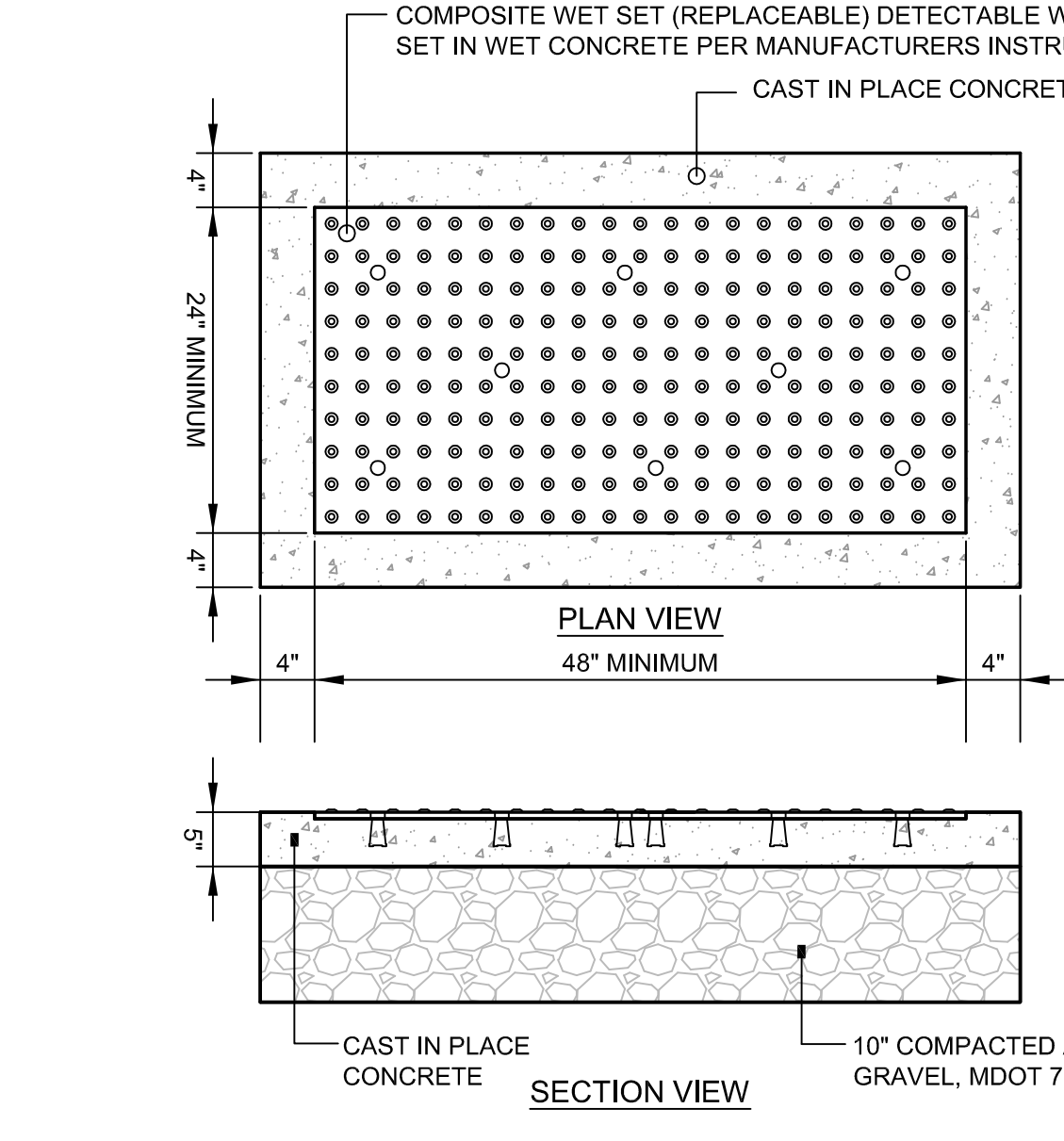
(F) BARRIER FREE RAMP DETAILS
N.T.S.



PREFERRED SIDEWALK RAMP AT INTERSECTION

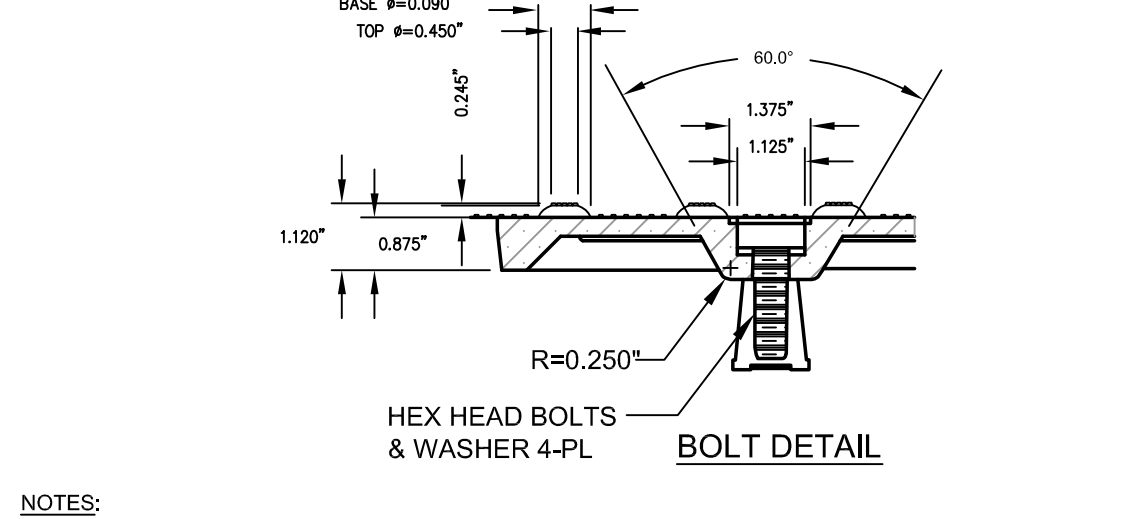
DIAGONAL SIDEWALK RAMP LAYOUT AT INTERSECTION FOR SIDEWALK WITH ESPLANADE (REQUIRES WAIVER)

- NOTES:
1. ALL RAMP SHALL COMPLY WITH ADA STANDARDS.
 2. LANDING AREA MAY BE REQUIRED BASED ON SIDEWALK DIMENSIONS.
 3. GRANITE CURB ADJACENT TO RAMP SHALL BE FLUSH WITH STREET.
 4. SIDEWALK MATERIAL PER CITY SIDEWALK MATERIAL POLICY.



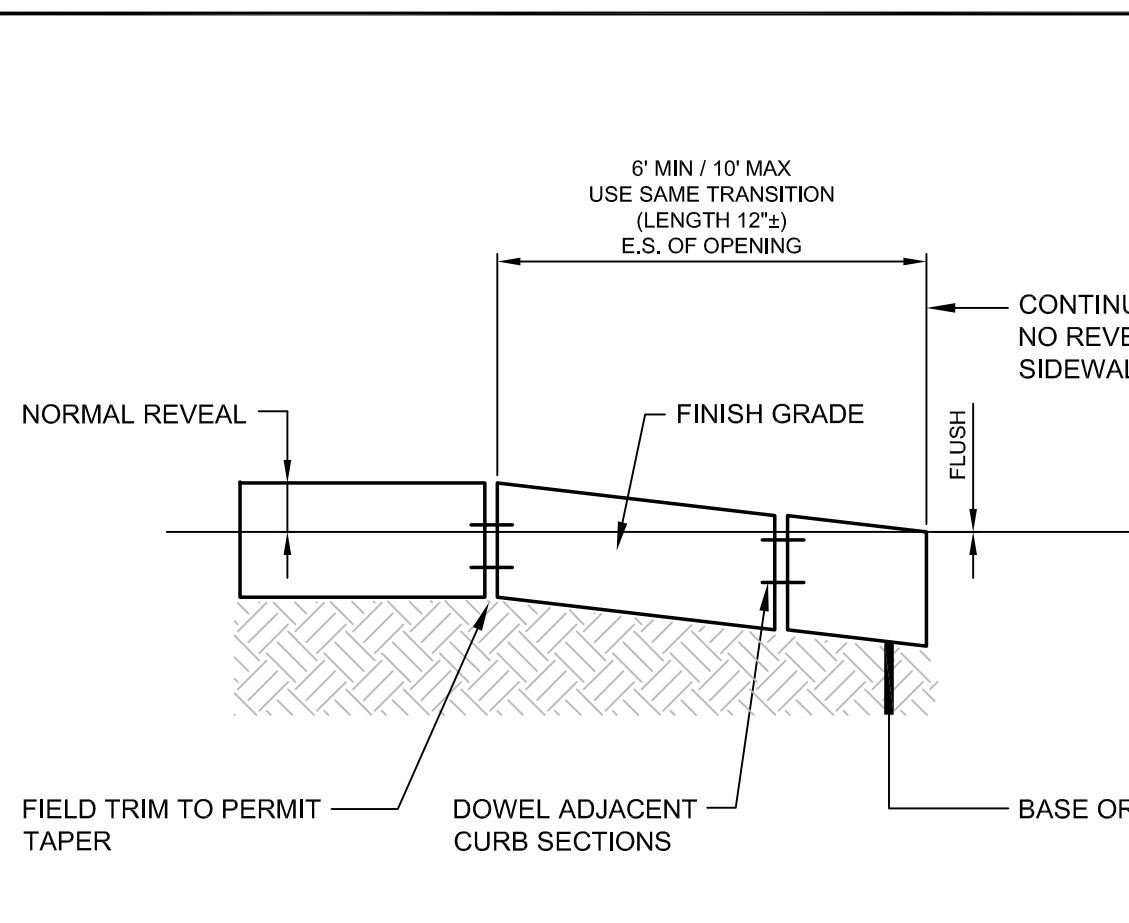
NOTE: USE NEAR VERTICAL MOLD WHEN ADJACENT TO SIDEWALK

(E) SLIPFORM CONCRETE CURB DETAIL - SLOPED MOLD
N.T.S.



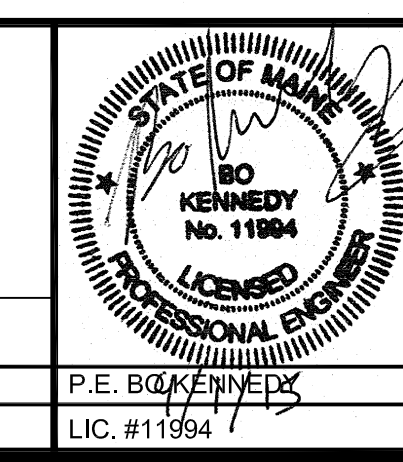
- NOTES:
1. COMPOSITE WET SET (REPLACEABLE) DETECTABLE WARNING PANELS SHALL BE AS MANUFACTURED BY ADA SOLUTIONS, INC. (WWW.ADATILE.COM) OR APPROVED EQUAL.
 2. CAST IN PLACE CONCRETE SHALL MEET SPECIFICATIONS FOR MAINE D.O.T. CLASS A STRUCTURAL CONCRETE. MINIMUM COMPRESSIVE STRENGTH 4,000 PSI. THE CONCRETE SHALL BE SEALED PRIOR TO SETTING PANELS. THE EXPOSED CONCRETE BORDER SHALL RECEIVE A GROOVED EDGE BETWEEN THE PANEL AND CONCRETE, ALONG WITH A UNIFORM BROOM FINISH PERPENDICULAR TO THE FLOW OF PEDESTRIAN TRAFFIC.
 3. TRUNCATED DOMES SHALL BE ADJACENT IN ROWS, PARALLEL AND PERPENDICULAR TO THE PREDOMINANT DIRECTION OF TRAVEL. TRUNCATED DOME BRICKS AND GRANITE PAVERS ARE NOT ALLOWED.
 4. FOR ALL DETECTABLE WARNING PANELS (EXCEPT AS SPECIFIED IN FIGURE 17A AND TECHNICAL MANUAL SECTION 13.4.1, FEDERAL YELLOW COLORED (63338) PANELS SHALL BE USED. FOLLOW MANUFACTURER'S INSTRUCTIONS FOR INSTALLATION.
 5. SIZE: THE DETECTABLE WARNING PANEL(S) SHALL EXTEND 24 INCHES MINIMUM IN THE DIRECTION OF TRAVEL AND THE FULL WIDTH OF THE CURB RAMP, LANDING, OR BLENDED TRANSITION TO THE STREET.
 6. ORIENTATION: THE DETECTABLE WARNING PANEL SHALL BE LOCATED SO THAT THE EDGE NEAREST THE CURB LINE IS 6 INCHES MINIMUM AND 6 INCHES MAXIMUM FROM THE CURB LINE. THE PANEL SHALL BE ORIENTED TO THE DIRECTION OF TRAVEL AS IDENTIFIED BY THE POINT OF ENTRY.

(B) DETECTABLE WARNING PAVER DETAIL
N.T.S.



(C) SLOPE OF GRANITE CURB AT ADA RAMPS AND DRIVEWAYS
N.T.S.

REV	DATE	DESCRIPTION	REVISIONS
1	09.01.15	FINAL BRICK SOUTH LEVEL III SITE PLAN	



PROJECT: BRICK NORTH AND SOUTH BUILDINGS AT THE FOREFRONT AT THOMPSON'S POINT
SHEET TITLE: CURBING AND SIDEWALK DETAILS
CLIENT: FOREFRONT PARTNERS | LP

FST FAY, SPOFFORD & THORNDIKE
ENGINEERS - PLANNERS - SCIENTISTS
778 MAIN ST., SUITE 8, SOUTH PORTLAND, ME 04106
DRAWN: DED DATE: APRIL 2015
DESIGNED: BEK SCALE: AS NOTED
CHECKED: SRB JOB NO. 2982.05
FILE NAME: 2982.05-BS DET
SHEET: C-8.1

PRELIMINARY - NOT FOR CONSTRUCTION