

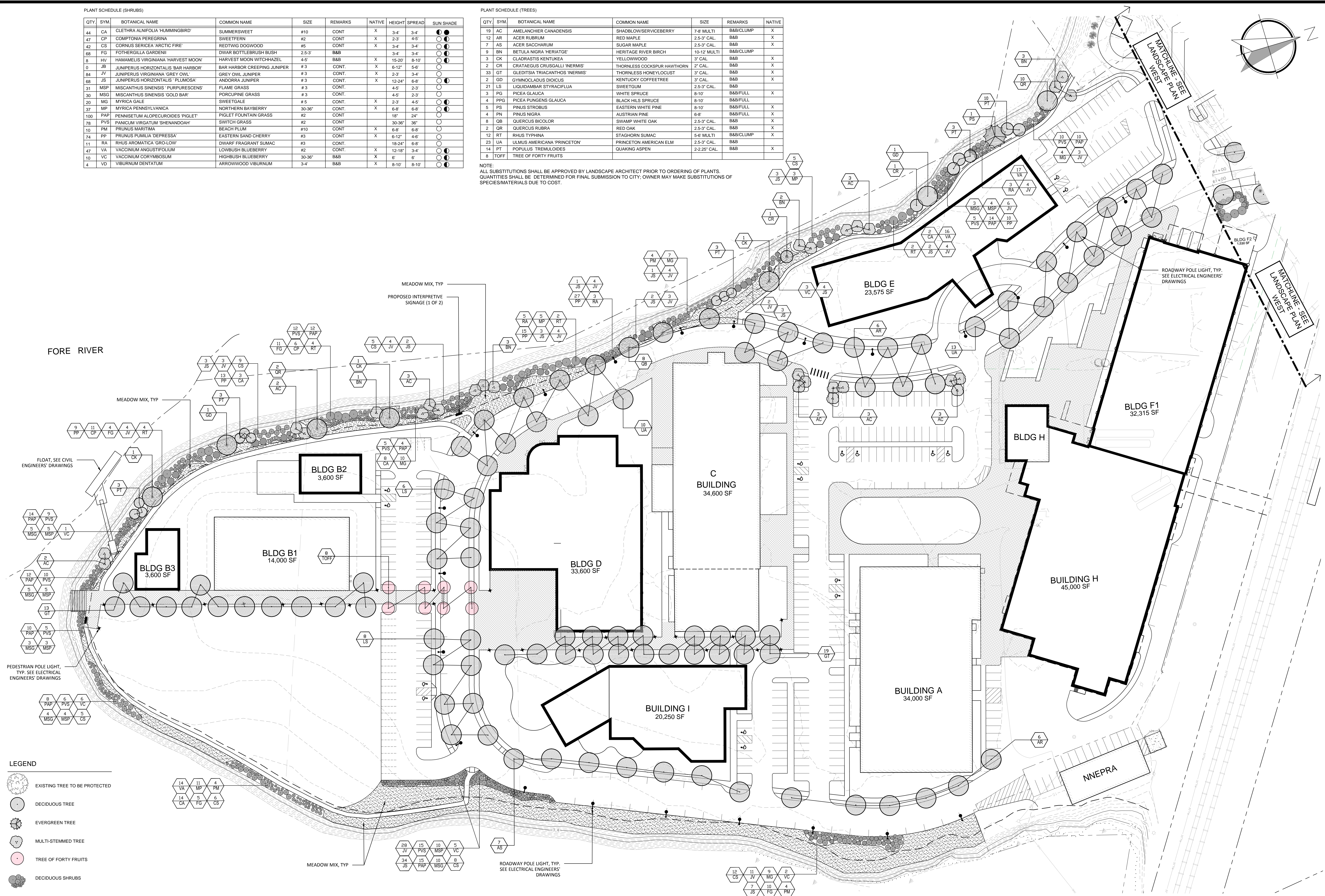
PLANT SCHEDULE (SHRUBS)

QTY	SYM	BOTANICAL NAME	COMMON NAME	SIZE	REMARKS	NATIVE	HEIGHT	SPREAD	SUN SHADE
44	CA	CLETHRA ALNIFOLIA 'HUMMINGBIRD'	SUMMERSWEET	#10	CONT	X	3'-4"	3'-4"	●●●
47	CP	COMPTONIA PEREGRINA	SWEETFERN	#2	CONT	X	2'-3"	4'-5"	●●●
42	CS	CORNUS SERICEA 'ARCTIC FIRE'	REDTWIG DOGWOOD	#5	CONT	X	3'-4"	3'-4"	●●●
68	FG	FOTHERGILLA GARDENII	DWARF BOTTLEBRUSH BUSH	2.5-3'	B&B		3'-4"	3'-4"	●●●
8	HV	HAMAMELIS VIRGINIANA 'HARVEST MOON'	HARVEST MOON WITCHHAZEL	4-5'	B&B	X	15-20'	8-10'	●●●
0	JB	JUNIPERUS HORIZONTALIS 'BAR HARBOR'	BAR HARBOR CREEPING JUNIPER	#3	CONT	X	6-12'	5-6'	●●●
84	JV	JUNIPERUS VIRGINIANA 'GREY OWL'	GREY OWL JUNIPER	#3	CONT	X	2-3'	3-4'	●●●
68	JS	JUNIPERUS HORIZONTALIS 'PLUMOSA'	ANDORRA JUNIPER	#3	CONT	X	12-24'	6-8'	●●●
31	MSP	MISCANTHUS SINENSIS 'PURPURESCENS'	FLAME GRASS	#3	CONT		4-5'	2-3'	●●●
20	MSG	MISCANTHUS SINENSIS 'GOLD BAR'	PORCUPINE GRASS	#3	CONT		4-5'	2-3'	●●●
20	MG	MYRICA GALE	SWEETGALE	#5	CONT	X	2-3'	4-5'	●●●
37	MP	MYRICA PENNSYLVANICA	NORTHERN BAYBERRY	30-36"	CONT	X	6-8'	6-8'	●●●
100	PAP	PENNISETUM ALOPECUROIDES 'PIGLET'	PIGLET FOUNTAIN GRASS	#2	CONT		18"	24"	●●●
78	PVS	PANICUM VIRGATUM 'SHENANDOAH'	SWITCH GRASS	#2	CONT		30-36"	36"	●●●
10	PM	PRUNUS MARITIMA	BEACH PLUM	#10	CONT	X	6-8'	6-8'	●●●
74	PP	PRUNUS PUMILA 'DEPRESSA'	EASTERN SAND CHERRY	#3	CONT	X	6-12'	4-6'	●●●
11	RA	RHUS AROMATICA 'GRO-LOW'	DWARF FRAGRANT SUMAC	#3	CONT	X	18-24'	6-8'	●●●
47	VA	VACCINIUM ANGSTUFOLIUM	LOWBUSH BLUEBERRY	#2	CONT	X	12-18"	3-4"	●●●
10	VC	VACCINIUM CORYMBOSUM	HIGHBUSH BLUEBERRY	30-36"	B&B	X	6'	6'	●●●
4	VD	VIBURNUM DENTATUM	ARROWWOOD VIBURNUM	3-4'	B&B	X	8-10'	8-10'	●●●

PLANT SCHEDULE (TREES)

QTY	SYM	BOTANICAL NAME	COMMON NAME	SIZE	REMARKS	NATIVE
19	AC	AMELANCHIER CANADENSIS	SHADBLOWSERVICEBERRY	7-8' MULTI	B&B/CLUMP	X
12	AR	ACER RUBRUM	RED MAPLE	2.5-3' CAL.	B&B	X
7	AS	ACER SACCHARUM	SUGAR MAPLE	2.5-3' CAL.	B&B	X
9	BN	BETULA NIGRA 'HERIATGE'	HERITAGE RIVER BIRCH	10-12' MULTI	B&B/CLUMP	X
3	CK	CLADRSTIS KENTUCKEA	YELLOWWOOD	3' CAL.	B&B	X
2	CR	CRATAEGUS CRUGALLI 'INERMIS'	THORNLESS COCKSPUR HAWTHORN	2' CAL.	B&B	X
33	GT	GLEDITSIA TRIACANTHOS 'INERMIS'	THORNLESS HONEYLOCUST	3' CAL.	B&B	X
2	GD	GYMNOCALADUS DIOICUS	KENTUCKY COFFEETREE	3' CAL.	B&B	X
21	LS	LIQUIDAMBAR STYRACIFLUA	SWEETGUM	2.5-3' CAL.	B&B	X
3	PG	PICEA GLAUCA	WHITE SPRUCE	9-10'	B&B/FULL	X
4	PPG	PICEA PUNGENS GLAUCA	BLACK HILLS SPRUCE	8-10'	B&B/FULL	X
5	PS	PINUS STROBUS	EASTERN WHITE PINE	8-10'	B&B/FULL	X
4	PN	PINUS NIGRA	AUSTRIAN PINE	6-8'	B&B/FULL	X
8	OB	QUERCUS BICOLOR	SWAMP WHITE OAK	2.5-3' CAL.	B&B	X
2	OR	QUERCUS RUBRA	RED OAK	2.5-3' CAL.	B&B	X
12	RT	RHUS TYPHINA	STAGHORN SUMAC	5-6' MULTI	B&B/CLUMP	X
23	UA	ULMUS AMERICANA 'PRINCETON'	PRINCETON AMERICAN ELM	2.5-3' CAL.	B&B	X
14	PT	POPULUS TREMULOIDES	QUAKING ASPEN	2-2.25' CAL.	B&B	X
8	TOFF	TREE OF FORTY FRUITS				

NOTE:
ALL SUBSTITUTIONS SHALL BE APPROVED BY LANDSCAPE ARCHITECT PRIOR TO ORDERING OF PLANTS.
QUANTITIES SHALL BE DETERMINED FOR FINAL SUBMISSION TO CITY; OWNER MAY MAKE SUBSTITUTIONS OF SPECIES/MATERIALS DUE TO COST.



LEGEND

- EXISTING TREE TO BE PROTECTED
- DECIDUOUS TREE
- EVERGREEN TREE
- MULTI-STEMMED TREE
- TREE OF FORTY FRUITS
- DECIDUOUS SHRUBS
- EVERGREEN SHRUBS
- MEADOW MIX
- ROADWAY POLE LIGHT
- PEDESTRIAN POLE LIGHT

NOTES:
1. LANDSCAPING HAS BEEN PROVIDED FOR ALL COMMON AREAS. INDIVIDUAL DEVELOPMENT PARCELS WILL BE DESIGNED AND ARE SUBJECT TO REVIEW AT THE LEVEL III SITE PLAN STAGE
2. SEE L2.0 FOR GENERAL PLANTING NOTES AND DETAILS

PROJECT		THE FOREFRONT AT THOMPSON'S POINT	
SHEET TITLE		LANDSCAPE PLAN EAST	
CLIENT		FOREFRONT PARTNERS I, LP	
REV	DATE	DESCRIPTION	REVISIONS
5	08.11.15	AMENDED SITE PLAN SUBMITTED TO CITY	
4	12.11.14	AMENDED SITE PLAN SUBMITTED TO CITY	
3	9.10.14	AMENDED SITE PLAN SUBMITTED TO CITY	
2	7.29.14	AMENDED SITE PLAN SUBMITTED TO CITY	
1	06.23.14	AMENDED SITE PLAN SUBMITTED TO CITY	
LIC #			
DRAWN		DATE: October 3, 2014	
DESIGNED		SCALE: 1"=40'-0"	
CHECKED		JOB NO.	
FILE NAME		MP-LANDSCAPE-PLAN-8.11.15.DWG	
SHEET		L-1.0	

