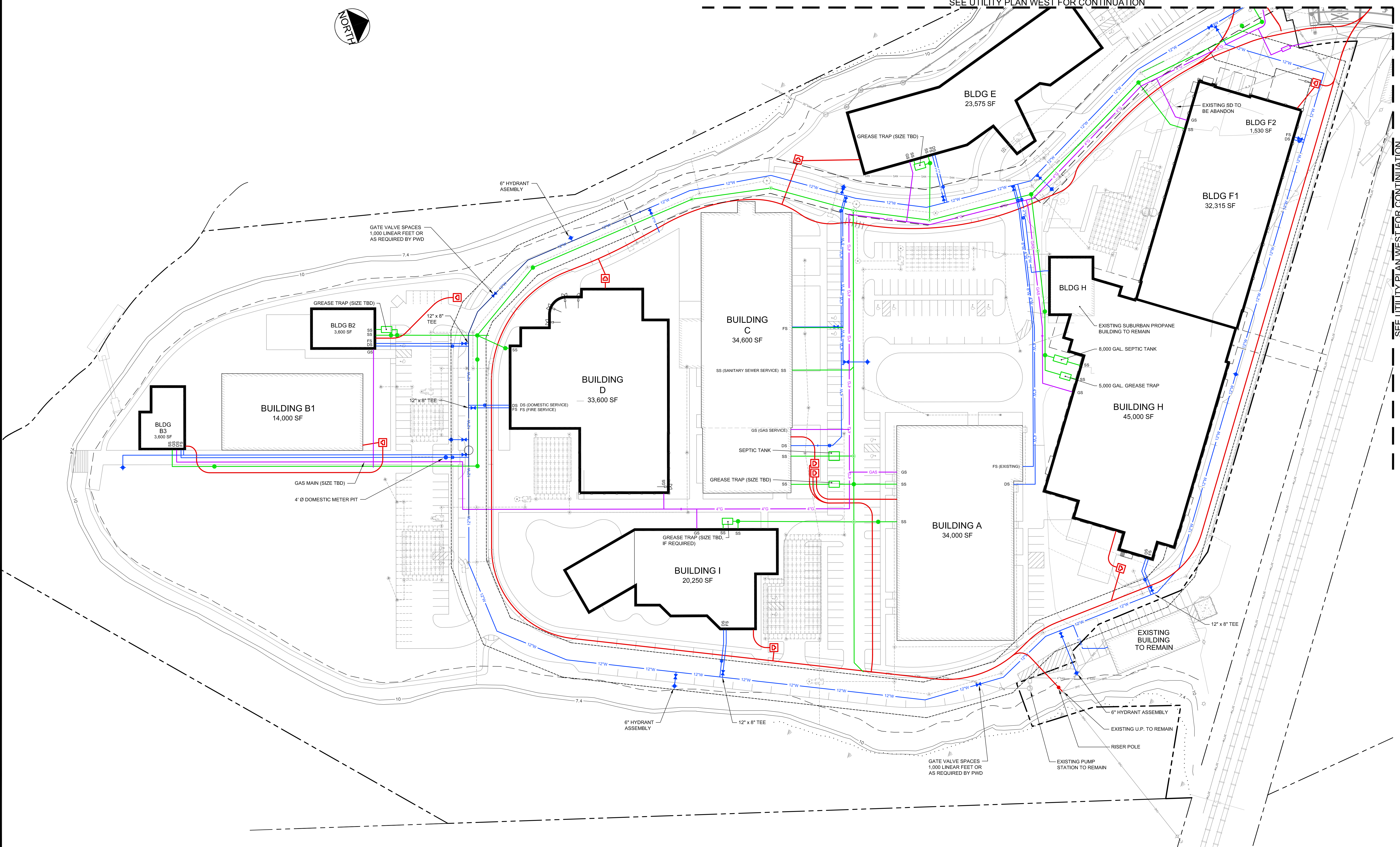


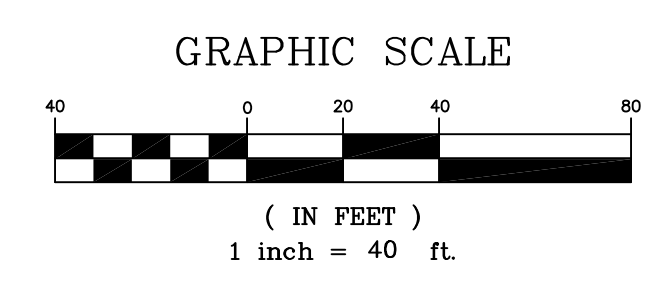
SEE UTILITY PLAN WEST FOR CONTINUATION

SEE UTILITY PLAN WEST FOR CONTINUATION

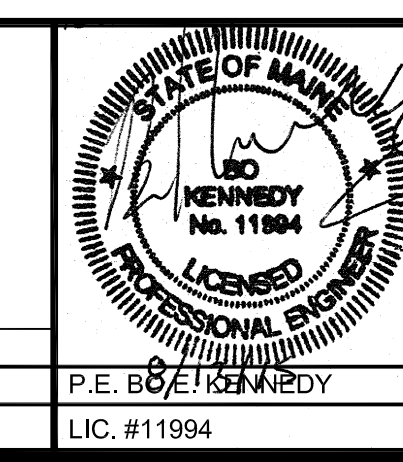


- NOTES:**
1. ALL UTILITY ENTRY LOCATIONS ARE SUBJECT TO COORDINATION AND ADJUSTMENT AS PART OF CONSTRUCTION DOCUMENT PREPARATION
 2. SEE SITE LIGHTING PLANS BY BARTLETT DESIGN FOR PROPOSED LIGHT LOCATIONS

NOTE:
 ALL BUILDINGS WILL HAVE A COMPLETE SPRINKLER SYSTEM MEETING THE REQUIREMENTS OF NFPA (BUILDING B1 IS EXEMPT FROM THE SPRINKLER REQUIREMENT BECAUSE IT IS NOT CLASSIFIED AS AN ENCLOSED BUILDING)



REV	DATE	DESCRIPTION
1	08.13.15	FINAL SUBDIVISION APPLICATION SUBMISSION



PROJECT: THE FOREFRONT AT THOMPSON'S POINT
 SHEET TITLE: UTILITY PLAN - EAST
 CLIENT: FOREFRONT PARTNERS I, LP

FST FAY, SPOFFORD & THORNDIKE
 ENGINEERS - PLANNERS - SCIENTISTS
 778 MAIN ST., SUITE 8, SOUTH PORTLAND, ME 04106

DRAWN: DED DATE: SEPT 2014
 DESIGNED: BEK SCALE: 1" = 40'
 CHECKED: SRB JOB NO. SP-M007B
 FILE NAME: 2982.05-UTILITY
 SHEET: C-6.1