

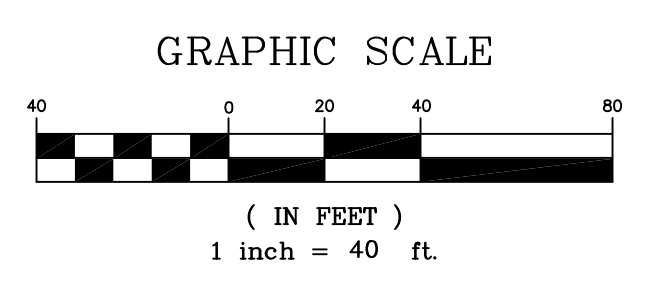
SEE EAST FOR CONTINUATION

LIMIT OF WATER MAIN REMOVAL

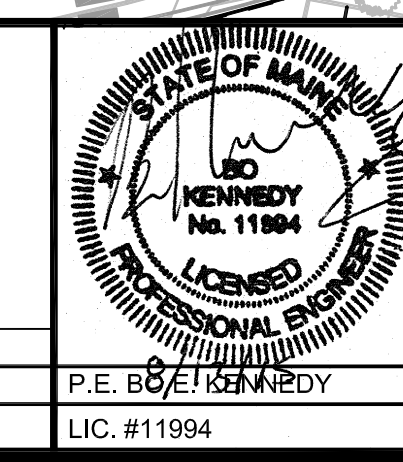
SEE THOMPSON'S POINT CONNECTOR ROAD PLANS FOR INFORMATION RELATED TO OFFSITE ROAD IMPROVEMENTS

SEWALL STREET

PRELIMINARY - NOT FOR CONSTRUCTION



REV	DATE	DESCRIPTION
1	08.13.15	FINAL SUBDIVISION APPLICATION SUBMISSION



PROJECT: THE FOREFRONT AT THOMPSON'S POINT

SHEET TITLE: PHASE 1 ENVIRONMENTAL REMEDIATION DEMOLITION AND REMOVALS PLAN - WEST

CLIENT: FOREFRONT PARTNERS I, LP

**FST** FAY, SPOFFORD & THORNDIKE  
ENGINEERS - PLANNERS - SCIENTISTS  
778 MAIN ST., SUITE 8, SOUTH PORTLAND, ME 04106

DRAWN: DED DATE: SEPT 2014  
DESIGNED: BEK SCALE: 1" = 40'  
CHECKED: SRB JOB NO. SP-M007B  
FILE NAME: 2982.05-SUB DEMO  
SHEET: C-2.11

R:\2982.05 - Amended Site Plan Part II\Cadd\Permit Set\dwg\SUBDIVISION\2982.05-SUB DEMO.dwg davis, J 01/12/2015 10:54 AM