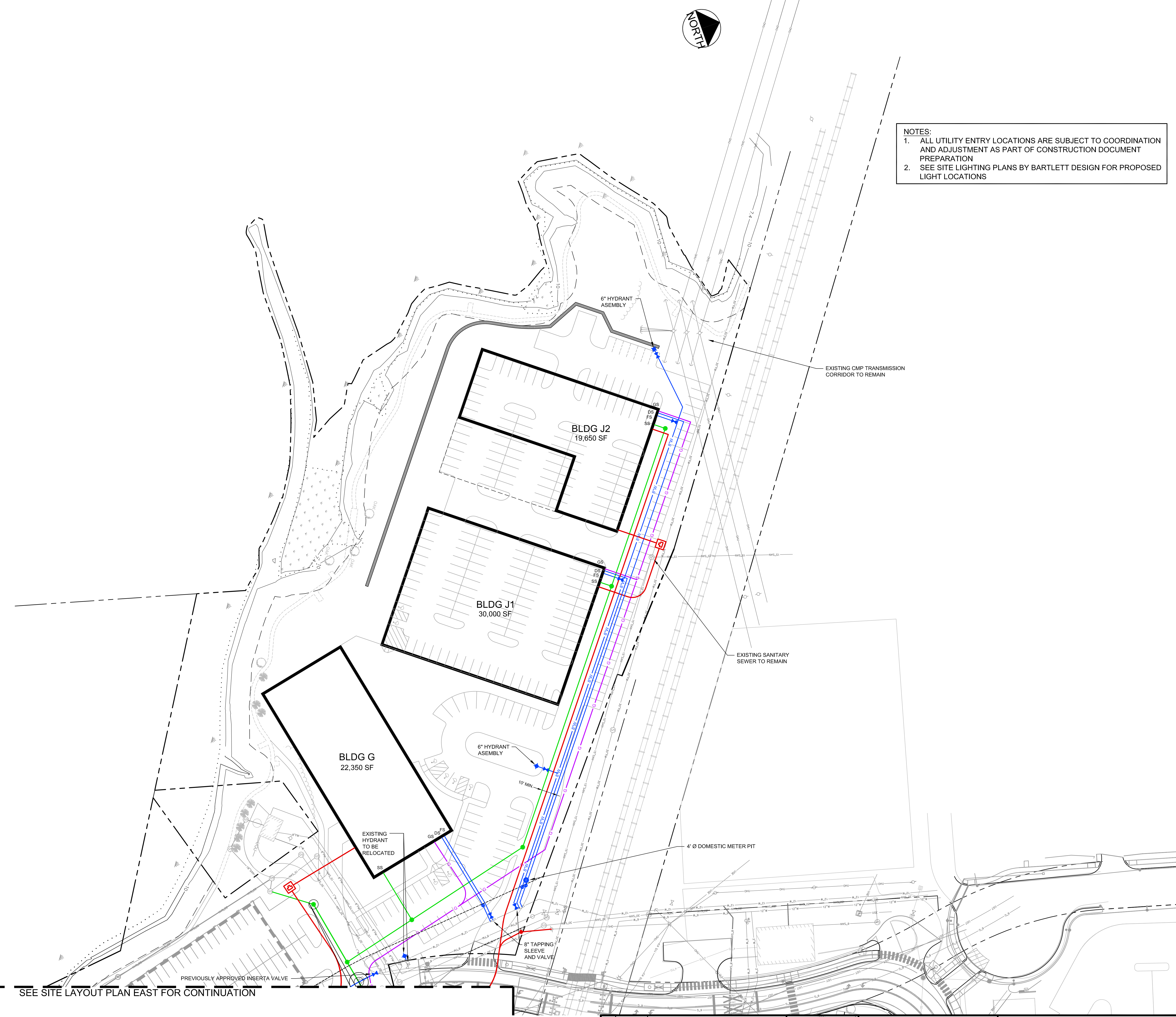
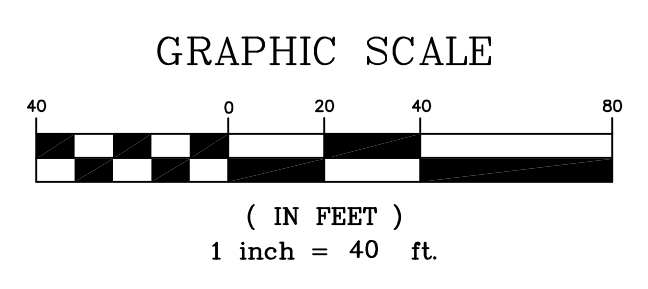


NOTES:
 1. ALL UTILITY ENTRY LOCATIONS ARE SUBJECT TO COORDINATION AND ADJUSTMENT AS PART OF CONSTRUCTION DOCUMENT PREPARATION
 2. SEE SITE LIGHTING PLANS BY BARTLETT DESIGN FOR PROPOSED LIGHT LOCATIONS

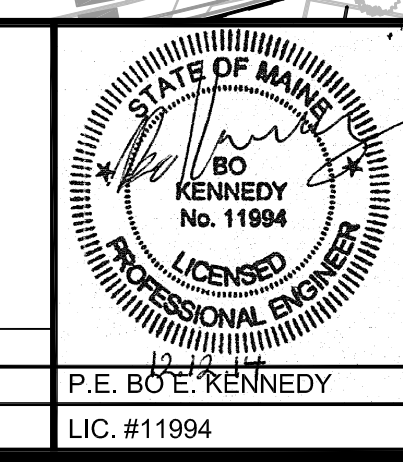


NOTE:
 ALL BUILDINGS WILL HAVE A COMPLETE SPRINKLER SYSTEM MEETING THE REQUIREMENTS OF NFPA (BUILDING B1 IS EXEMPT FROM THE SPRINKLER REQUIREMENT BECAUSE IT IS NOT CLASSIFIED AS AN ENCLOSED BUILDING)

SEE SITE LAYOUT PLAN EAST FOR CONTINUATION



REV	DATE	DESCRIPTION	REVISIONS
1	12.12.14	FINAL SUBDIVISION APPLICATION SUBMISSION	



PROJECT
**THE FOREFRONT
 AT THOMPSON'S POINT**
 SHEET TITLE
UTILITY PLAN - WEST
 CLIENT
FOREFRONT PARTNERS I, LP

FST **FAY, SPOFFORD & THORNDIKE**
 ENGINEERS - PLANNERS - SCIENTISTS
 778 MAIN ST, SUITE 8, SOUTH PORTLAND, ME 04106
 DRAWN: DED DATE: SEPT 2014
 DESIGNED: BEK SCALE: 1" = 40'
 CHECKED: SRB JOB NO. 2982.05
 FILE NAME: 2982.05-UTILITY
 SHEET **C-6.2**

PRELIMINARY - NOT FOR CONSTRUCTION