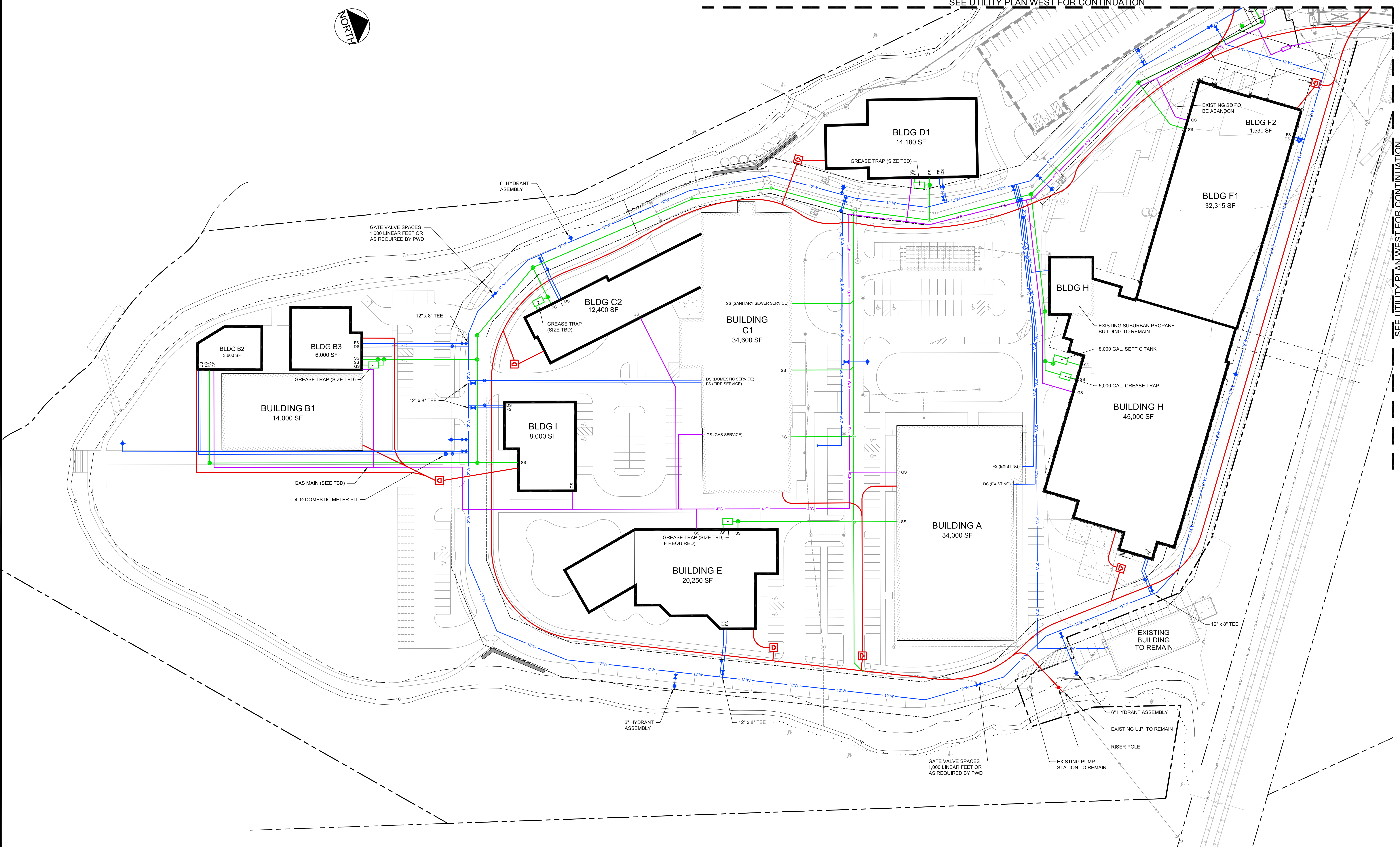


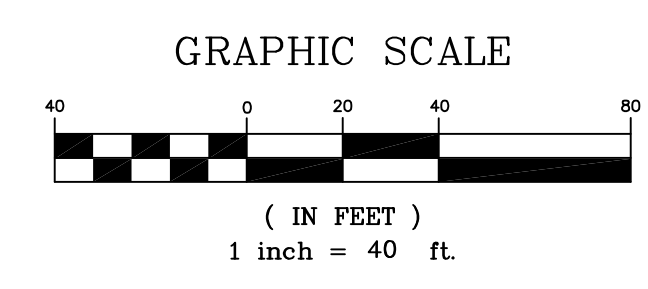
SEE UTILITY PLAN WEST FOR CONTINUATION

SEE UTILITY PLAN WEST FOR CONTINUATION



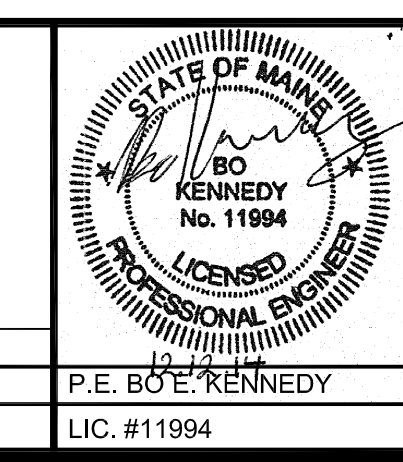
- NOTES:**
1. ALL UTILITY ENTRY LOCATIONS ARE SUBJECT TO COORDINATION AND ADJUSTMENT AS PART OF CONSTRUCTION DOCUMENT PREPARATION
 2. SEE SITE LIGHTING PLANS BY BARTLETT DESIGN FOR PROPOSED LIGHT LOCATIONS

NOTE:
 ALL BUILDINGS WILL HAVE A COMPLETE SPRINKLER SYSTEM MEETING THE REQUIREMENTS OF NFPA (BUILDING B1 IS EXEMPT FROM THE SPRINKLER REQUIREMENT BECAUSE IT IS NOT CLASSIFIED AS AN ENCLOSED BUILDING)



PRELIMINARY - NOT FOR CONSTRUCTION

REV	DATE	DESCRIPTION	REVISIONS
1	12.12.14	FINAL SUBDIVISION APPLICATION SUBMISSION	



PROJECT
**THE FOREFRONT
 AT THOMPSON'S POINT**

SHEET TITLE
UTILITY PLAN - EAST

CLIENT
FOREFRONT PARTNERS | LP

FST **FAY, SPOFFORD & THORNDIKE**
 ENGINEERS - PLANNERS - SCIENTISTS
 778 MAIN ST., SUITE 8, SOUTH PORTLAND, ME 04106

DRAWN: DED DATE: SEPT 2014
 DESIGNED: BEK SCALE: 1" = 40'
 CHECKED: SRB JOB NO. 2982.05
 FILE NAME: 2982.05-UTILITY
 SHEET **C-6.1**