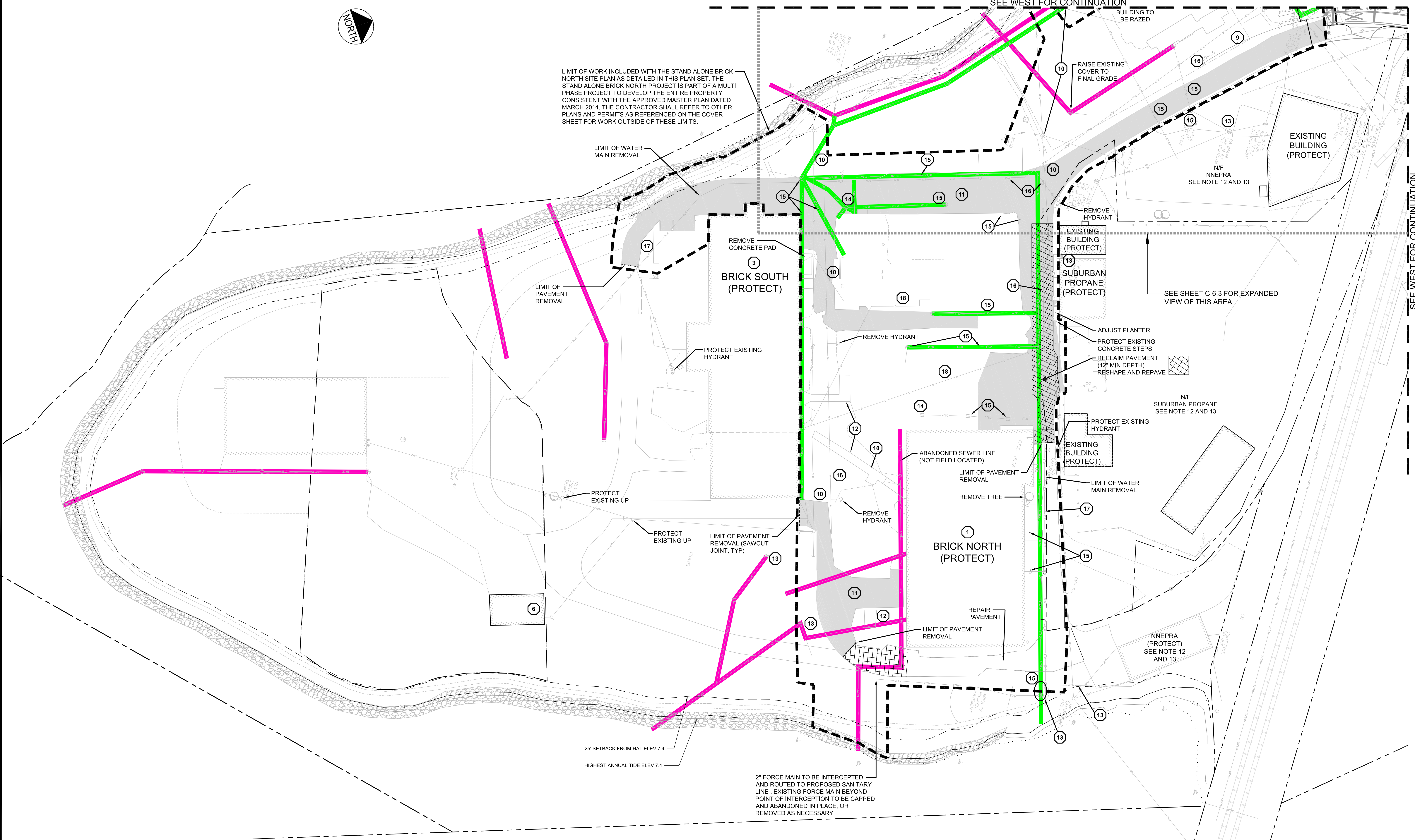


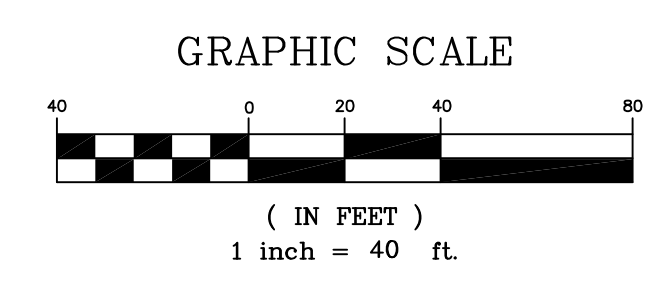
LIMIT OF WORK INCLUDED WITH THE STAND ALONE BRICK NORTH SITE PLAN AS DETAILED IN THIS PLAN SET. THE STAND ALONE BRICK NORTH PROJECT IS PART OF A MULTI PHASE PROJECT TO DEVELOP THE ENTIRE PROPERTY CONSISTENT WITH THE APPROVED MASTER PLAN DATED MARCH 2014. THE CONTRACTOR SHALL REFER TO OTHER PLANS AND PERMITS AS REFERENCED ON THE COVER SHEET FOR WORK OUTSIDE OF THESE LIMITS.



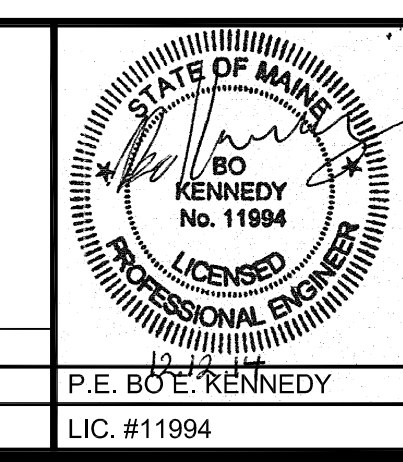
SEE WEST FOR CONTINUATION

SEE WEST FOR CONTINUATION

PRELIMINARY - NOT FOR CONSTRUCTION



REV	DATE	DESCRIPTION	REVISIONS
1	12.12.14	FINAL SUBDIVISION APPLICATION SUBMISSION	



PROJECT  
**THE FOREFRONT  
 AT THOMPSON'S POINT**  
 SHEET TITLE  
**PHASE 1 ENVIRONMENTAL  
 REMEDIATION DEMOLITION AND  
 REMOVALS PLAN - EAST**  
 CLIENT  
**FOREFRONT PARTNERS | LP**

**FST** **FAY, SPOFFORD & THORNDIKE**  
 ENGINEERS - PLANNERS - SCIENTISTS  
 778 MAIN ST., SUITE 8, SOUTH PORTLAND, ME 04106  
 DRAWN: DED DATE: SEPT 2014  
 DESIGNED: BEK SCALE: 1" = 80'  
 CHECKED: SRB JOB NO. 2982.05  
 FILE NAME: 2982.05-SUB DEMO  
 SHEET **C-2.10**

R:\2982.05 - Amended Site Plan Part II\Cadd\Permit Set\dwg\SUBDIVISION\2982.05-SUB DEMO.dwg davis.jl 12/12/2014 2:36 PM