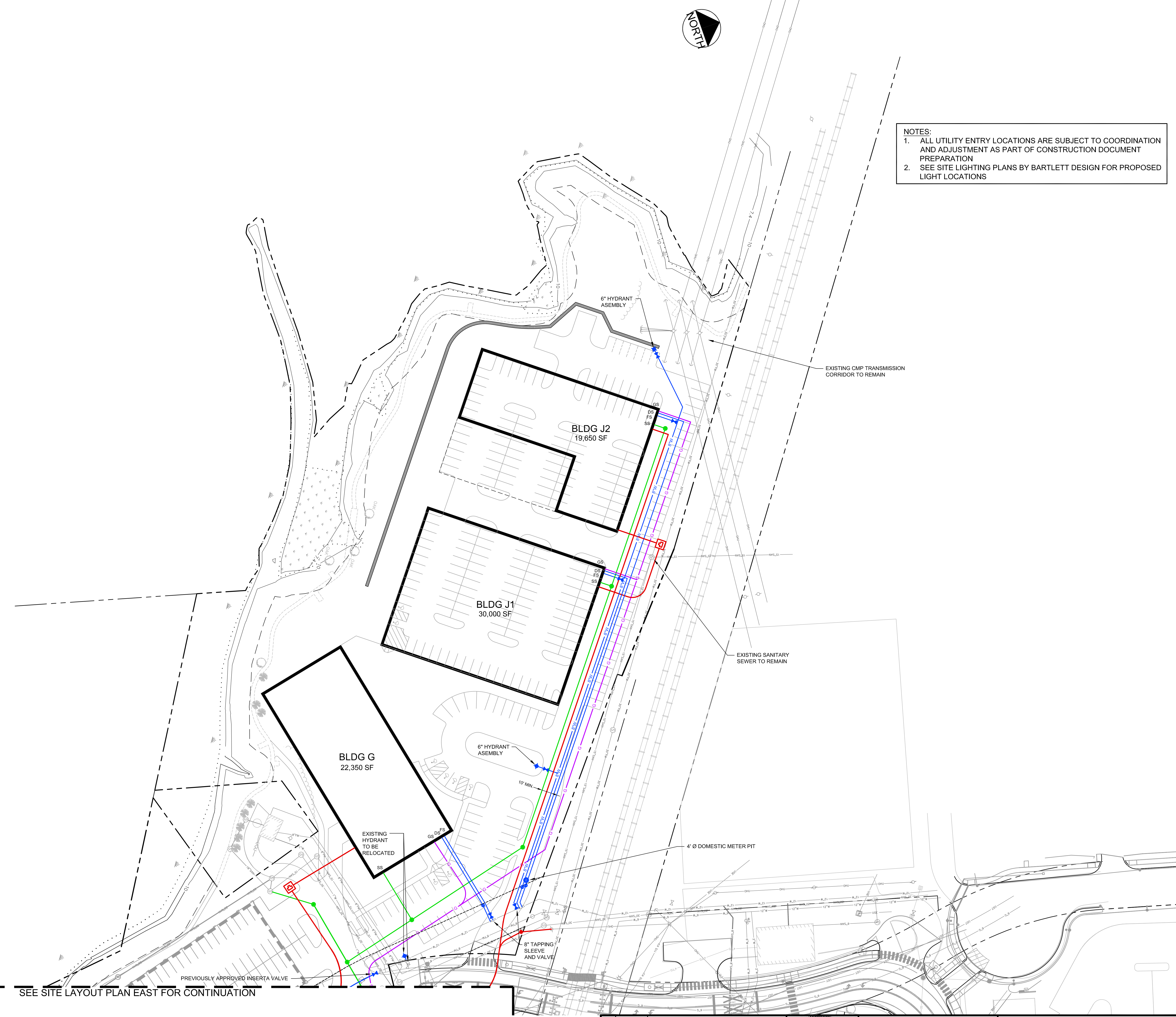
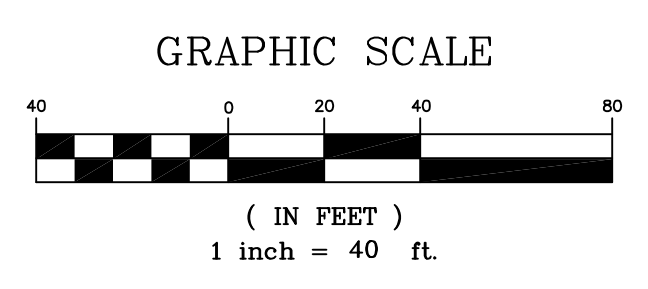


- NOTES:**
1. ALL UTILITY ENTRY LOCATIONS ARE SUBJECT TO COORDINATION AND ADJUSTMENT AS PART OF CONSTRUCTION DOCUMENT PREPARATION
 2. SEE SITE LIGHTING PLANS BY BARTLETT DESIGN FOR PROPOSED LIGHT LOCATIONS

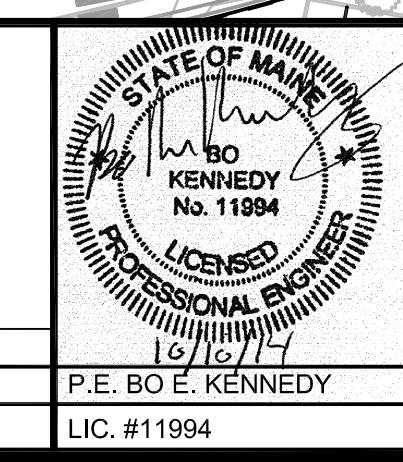


SEE SITE LAYOUT PLAN EAST FOR CONTINUATION

NOTE:
ALL BUILDINGS WILL HAVE A COMPLETE SPRINKLER SYSTEM MEETING THE REQUIREMENTS OF NFPA (BUILDING B1 IS EXEMPT FROM THE SPRINKLER REQUIREMENT BECAUSE IT IS NOT CLASSIFIED AS AN ENCLOSED BUILDING)



REV	DATE	DESCRIPTION
1	10.10.14	FINAL SUBDIVISION APPLICATION SUBMISSION



PROJECT
**THE FOREFRONT
AT THOMPSON'S POINT**

SHEET TITLE
UTILITY PLAN - WEST

CLIENT
FOREFRONT PARTNERS I, LP

FST FAY, SPOFFORD & THORNDIKE, INC.
ENGINEERS - PLANNERS - SCIENTISTS
778 MAIN ST, SUITE 8, SOUTH PORTLAND, ME 04106

DRAWN: DED DATE: SEPT 2014
DESIGNED: BEK SCALE: 1" = 40'
CHECKED: SRB JOB NO. 2982.05
FILE NAME: 2982.05-UTILITY
SHEET **C-6.2**

PRELIMINARY - NOT FOR CONSTRUCTION