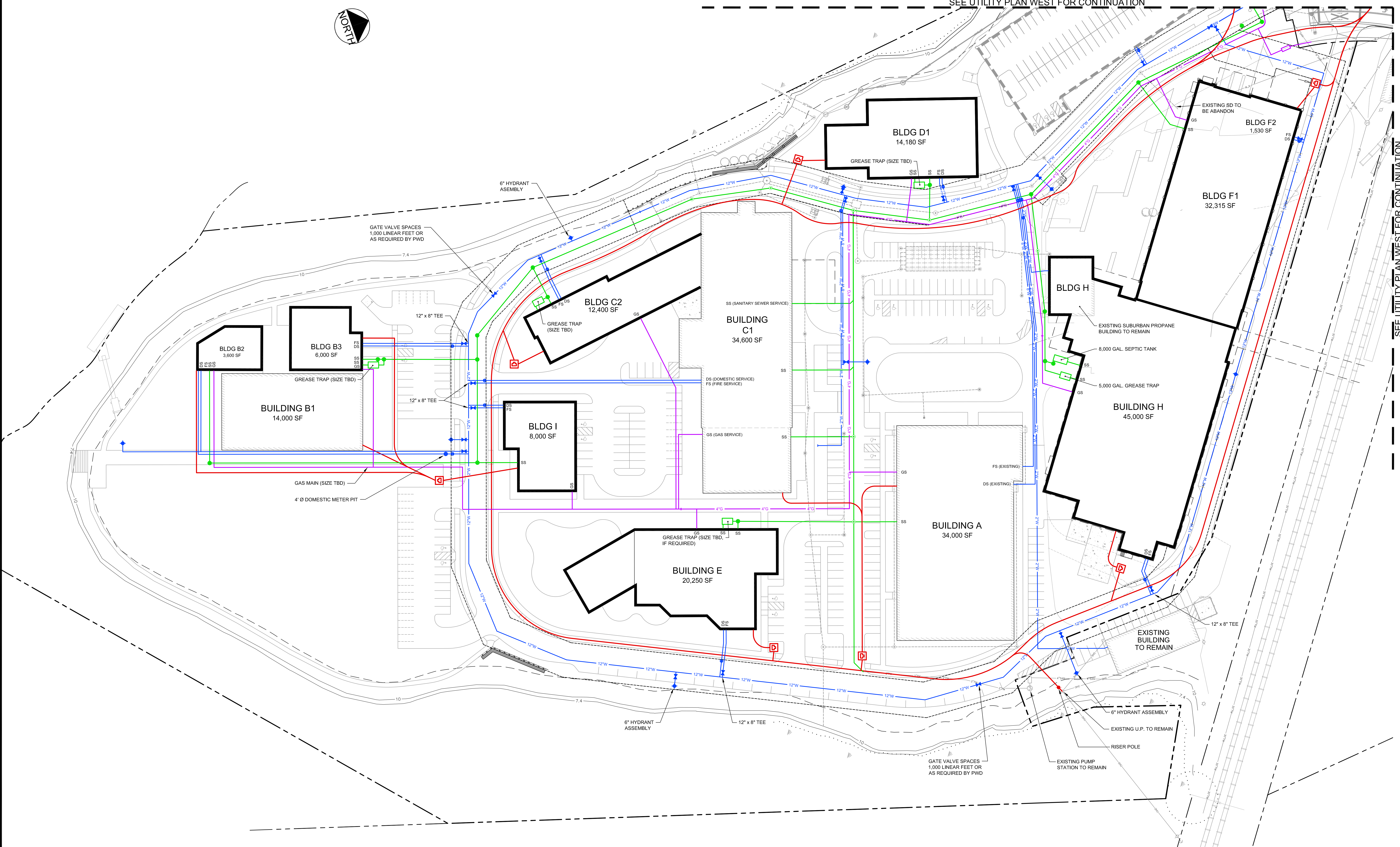


SEE UTILITY PLAN WEST FOR CONTINUATION

SEE UTILITY PLAN WEST FOR CONTINUATION

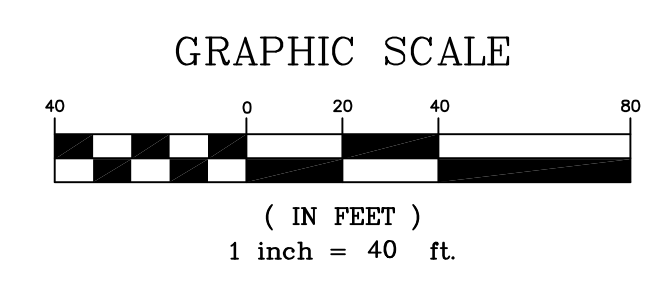


NOTES:

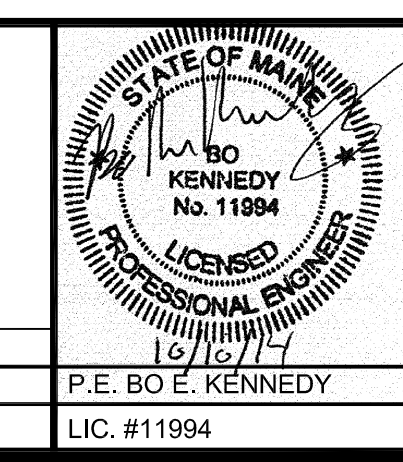
1. ALL UTILITY ENTRY LOCATIONS ARE SUBJECT TO COORDINATION AND ADJUSTMENT AS PART OF CONSTRUCTION DOCUMENT PREPARATION
2. SEE SITE LIGHTING PLANS BY BARTLETT DESIGN FOR PROPOSED LIGHT LOCATIONS

NOTE:
ALL BUILDINGS WILL HAVE A COMPLETE SPRINKLER SYSTEM MEETING THE REQUIREMENTS OF NFPA (BUILDING B1 IS EXEMPT FROM THE SPRINKLER REQUIREMENT BECAUSE IT IS NOT CLASSIFIED AS AN ENCLOSED BUILDING)

PRELIMINARY - NOT FOR CONSTRUCTION



REV	DATE	DESCRIPTION	REVISIONS
1	10.10.14	FINAL SUBDIVISION APPLICATION SUBMISSION	



PROJECT
**THE FOREFRONT
AT THOMPSON'S POINT**

SHEET TITLE
UTILITY PLAN - EAST

CLIENT
FOREFRONT PARTNERS | LP

FST **FAY, SPOFFORD & THORNDIKE, INC.**
ENGINEERS - PLANNERS - SCIENTISTS
778 MAIN ST., SUITE 8, SOUTH PORTLAND, ME 04106

DRAWN: DED DATE: SEPT 2014
DESIGNED: BEK SCALE: 1" = 40'
CHECKED: SRB JOB NO. 2982.05
FILE NAME: 2982.05-UTILITY
SHEET **C-6.1**