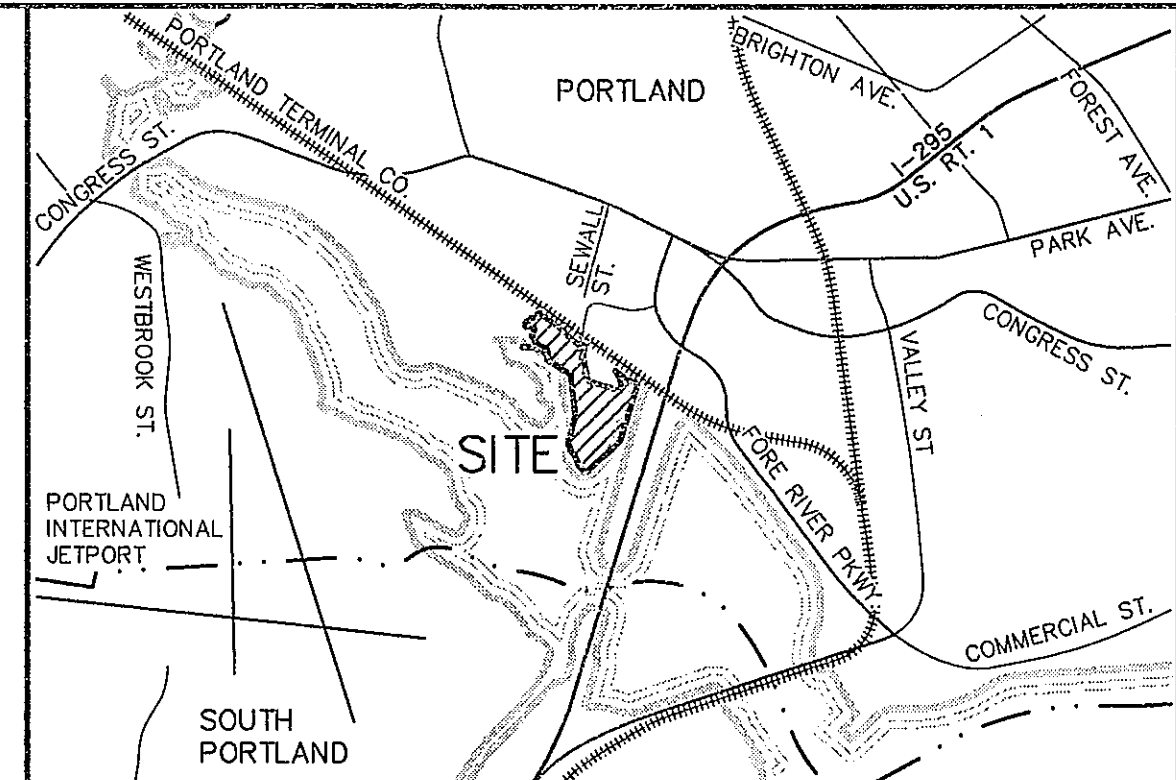


APPROXIMATE NORTHERLY BOUNDARY LINE OF STATE OF MAINE PARCELS, SEE PLAN REFERENCE 2E.

N/F STATE OF MAINE  
3079/336  
3153/761  
3367/171

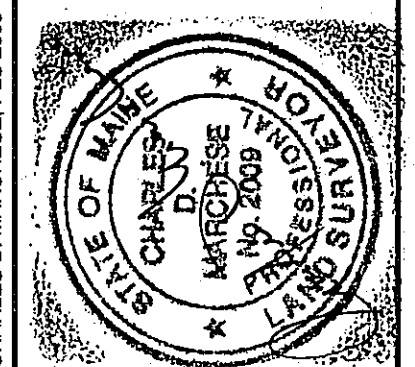
N/F STATE OF MAINE  
3079/336  
3153/761  
3367/171



LOCATION MAP N.T.S.

**GENERAL NOTES**

- BOUNDARY AND TOPOGRAPHIC INFORMATION SHOWN HEREON IS BASED UPON FIELD WORK PERFORMED BY SEBAGO TECHNIQS, INC. IN MAY 2011.
- PLAN REFERENCES:
  - PLAN SHOWING LAND AND HOUSE LOTS BELONGING TO THE WEST END LAND CO. AND P.H. AND J.M. BROWN, DATED 1887 BY E.C. JORDAN, C.E., THIS PLAN IS FILED IN THE CITY OF PORTLAND'S ENGINEERING FILES AS DRAWING NO. 355/4.
  - "RIGHT-OF-WAY AND TRACK MAP THE PORTLAND & OGDENSBURG RY. OPERATED BY THE PORTLAND TERMINAL COMPANY STATION 0+00 TO STATION 105+60" DATED JUNE 30, 1916, BY THE OFFICE OF THE CHIEF ENGINEER, PORTLAND, MAINE, SHEET V-2/1 & V-2/2.
  - "SITE PLAN-STANDARD BOUNDARY SURVEY OF CONCORD TRAILWAYS TRANSPORTATION CENTER FOR CONCORD TRAILWAYS", DATED THROUGH OCTOBER 16, 1995 BY SEBAGO TECHNIQS, INC.
  - "EXISTING CONDITIONS PLAN OF PORTLAND INTERMODAL TRANSPORTATION CENTER FOR CITY OF PORTLAND, 55 PORTLAND STREET, PORTLAND, MAINE 04101", DATED JANUARY 8, 2000, LAST REVISED MAY 21, 2001 BY SEBAGO TECHNIQS, INC., PROJECT 99607, SHEET 6 OF 20.
  - "STATE OF MAINE DEPARTMENT OF TRANSPORTATION RIGHT OF WAY MAP PORTLAND INTERMODAL TRANSPORTATION CENTER, PORTLAND, CUMBERLAND COUNTY, FEDERAL AID PROJECT NO. STP-NH-HP-7589(00)", DATED MARCH 2001, D.O.T. FILE NO. 3-185A. THIS PLAN IS RECORDED AT THE CCRD IN PLAN BOOK 203, PAGE 308 AND PLAN BOOK 207, PAGE 303.
  - "BOUNDARY SURVEY OF CONCORD TRAILWAY FACILITY, SEWALL STREET, PORTLAND, MAINE FOR LANGDON STREET REAL ESTATE, INC., 7 LANGDON STREET, CONCORD, NH 03301", DATED JANUARY 17, 2002, LAST REVISED MAY 23, 2003 BY SEBAGO TECHNIQS, INC., PROJECT NO. 01566EC.
  - "STATE OF MAINE DEPARTMENT OF TRANSPORTATION RIGHT OF WAY MAP STATE HIGHWAY 29S", PORTLAND, CUMBERLAND COUNTY, FEDERAL AID PROJECT NO. 1-295-3 (24)", DATED MAY 1967, D.O.T. FILE NO. 3-185, SHEETS 39 & 40 OF 73. THESE PLANS ARE RECORDED AT THE CCRD IN PLAN BOOK 112, PAGE 41 AND PLAN BOOK 112, PAGE 42, RESPECTIVELY.
  - "ALTA/ACSM LAND TITLE SURVEY ON CONGRESS STREET & SEWALL STREET, PORTLAND, MAINE MADE FOR OLYMPIA EQUITY INVESTORS I, L.P., 500 MAIN STREET, BANGOR, MAINE", DATED MAY 13, 1998 BY OWEN HASKELL, INC. SEE PROJECT NO. 97005P.
- PLAN ORIENTATION IS GRID NORTH, MAINE STATE PLANE COORDINATE SYSTEM, WEST ZONE 1802-NAD83, BASED ON DUAL FREQUENCY GLOBAL POSITIONING SYSTEM OBSERVATIONS. ELEVATIONS DEPICTED HEREON ARE NOV0 29, BASED ON CONVENTIONAL LEVELS RUN FROM A STATE HIGHWAY DISK STAMPED 200 EAST 2-3-73, SET FLUSH IN THE TOP OF THE CONCRETE ENDWALL RAILING AT THE NORTHEAST END (PORTLAND SIDE) OF THE I-295 BRIDGE OVER THE FORE RIVER HAVING A PUBLISHED ELEVATION OF 28.47 FEET, NOV0 29.
- UTILITY INFORMATION DEPICTED HEREON IS COMPILED USING PHYSICAL EVIDENCE LOCATED IN THE FIELD. UTILITIES DEPICTED HEREON MAY NOT NECESSARILY REPRESENT ALL EXISTING UTILITIES. NO SUB-SURFACE UTILITY INFORMATION WAS OBTAINED IN THE COURSE OF THIS SURVEY BY SEBAGO TECHNIQS, INC., CONTRACTORS NEED TO CONTACT DIG-SAFE SYSTEMS, INC. (1-888-DIG-SAFE) AND FIELD VERIFY EXISTING UTILITIES PRIOR TO CONSTRUCTION AND/OR EXCAVATION.



NO.	DATE	BY	STATUS
D	11-23-2011	CDM	EDITS TO PLAN NOTES REFLECTING DATUM CHANGE
C	11-23-2011	CDM	CONVERT PROJECT FROM NAD 83 TO NVD 29
B	10-05-11	CDM	EDITS TO ADDRESS CITY COMMENTS DATED JULY 25, 2011
A	08-01-11	CDM	FINAL PLAN ISSUED TO CLIENT

**Sebago Techniqs**  
 Engineering Experts You Can Build On  
 One Chase Street  
 Westbrook, Me 04092-1339  
 Tel (207) 855-0277  
 www.sebagotech.com

PROJECT NO.	1122	705A
DESIGN	CDM	MME
DRAWN	CDM	

**EXISTING CONDITIONS PLAN**  
 OF  
**THOMPSON'S POINT CONNECTOR ROAD**  
 FORMERLY PORTIONS OF SEWALL & HOOPER STREETS  
 PORTLAND, MAINE 04102  
 FOR  
**THOMPSON'S POINT DEVELOPMENT CO., INC.**  
 55 LISBON STREET  
 LEWISTON, MAINE 04240

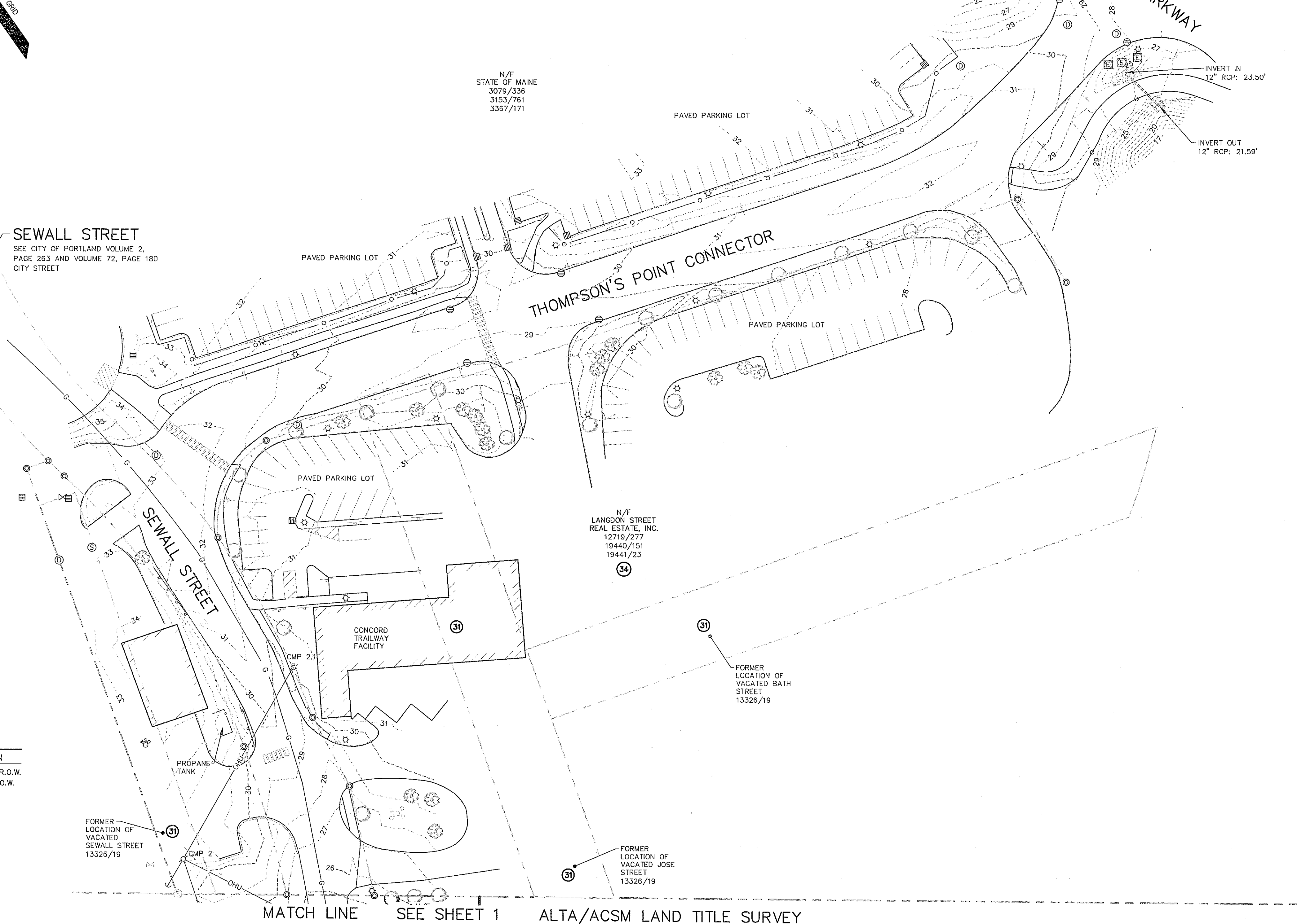
DATE	SCALE
MAY 27, 2011	1" = 40'

SHEET 1 OF 1

**SEWALL STREET**  
SEE CITY OF PORTLAND VOLUME 2, PAGE 263 AND VOLUME 72, PAGE 180 CITY STREET

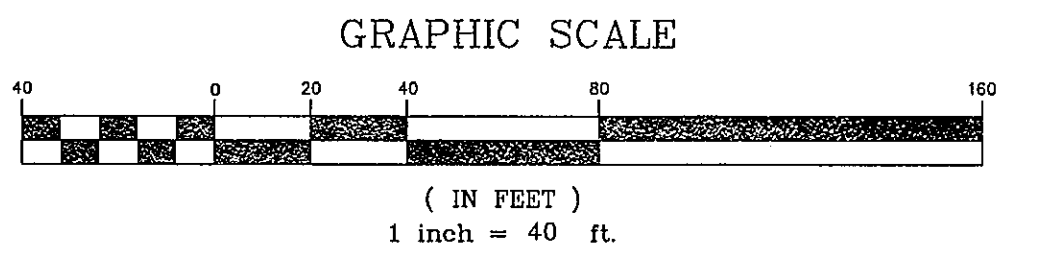
**THOMPSON'S POINT CONNECTOR**

**FORE RIVER PARKWAY**



**LEGEND**

EXISTING	DESCRIPTION
---	BOUNDARY LINE/R.O.W.
---	ABUTTER LINE/R.O.W.
---	DEED LINE/ROW
---	TIE LINE
---	EASEMENT
---	FLOODPLAIN
---	CENTERLINE
---	IRON PIPE/ROD
---	BENCHMARK
---	BUILDING
---	WETLANDS
---	EDGE WETLAND
---	ROCK OUTCROP
---	SIGN
---	EDGE PAVEMENT
---	GRAVEL ROAD
---	EDGE WATER
---	CONTOURS
---	SPOT GRADE
---	CHAIN LINK FENCE
---	DECIDUOUS TREE
---	CONIFEROUS TREE
---	GUARDRAIL
---	WATER GATE VALVE
---	HYDRANT
---	SEWER MH
---	CATCH BASIN
---	DRAINAGE MH
---	UNIDENTIFIED MH
---	OVERHEAD UTILITY
---	ELECTRIC METER BOX
---	LIGHT POLE
---	UTILITY POLE
---	GUY
---	RIPRAP
---	BOULDER
---	SCHEDULE B SECTION 2 EXCEPTIONS



MATCH LINE SEE SHEET 1 ALTA/ACSM LAND TITLE SURVEY

FORMER LOCATION OF VACATED SEWALL STREET 13326/19

FORMER LOCATION OF VACATED BATH STREET 13326/19

FORMER LOCATION OF VACATED JOSE STREET 13326/19

N/F LANGDON STREET REAL ESTATE, INC.  
12719/277  
19440/151  
19441/23

111221.TS.dwg, TAB: 11122EC-4