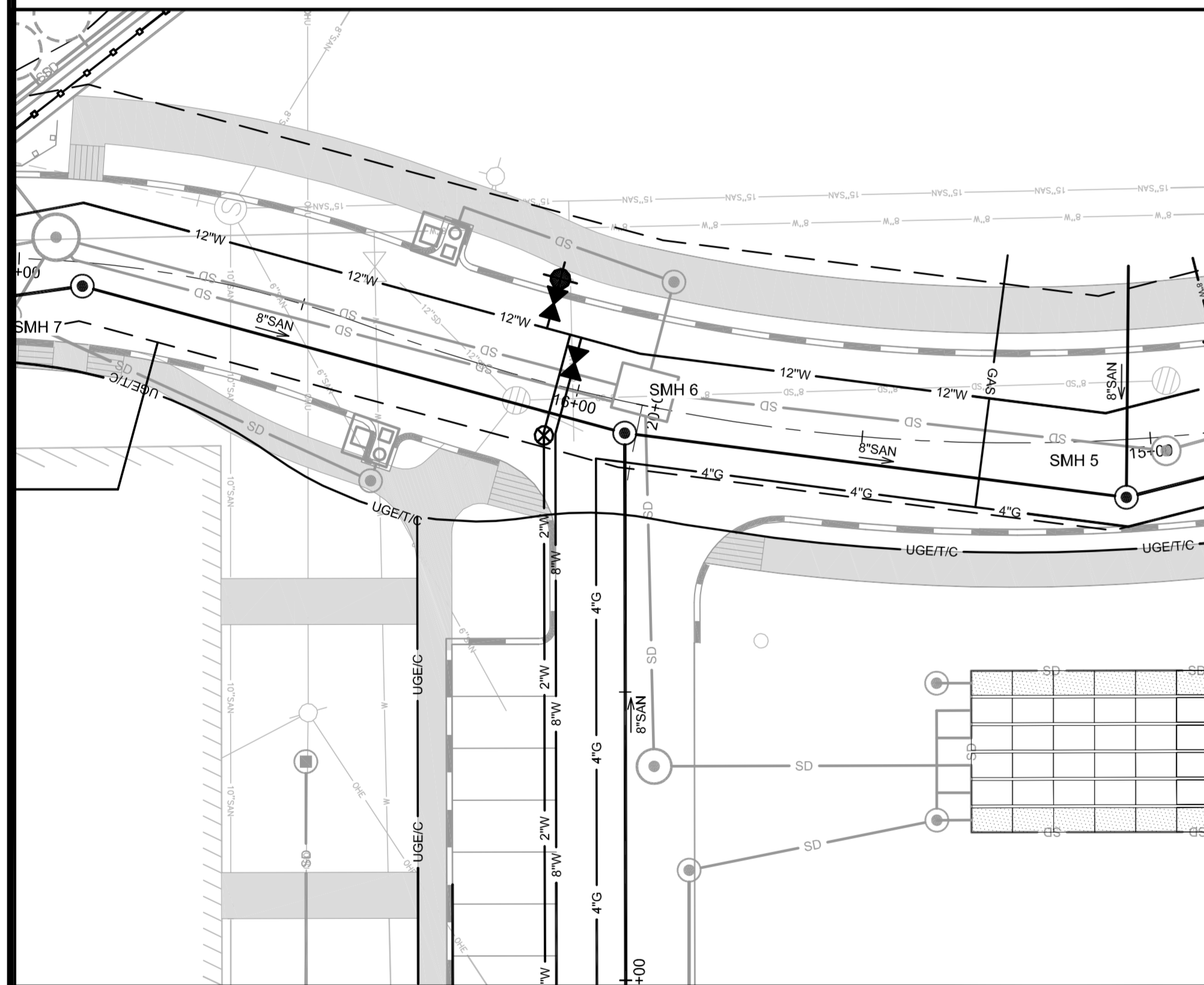
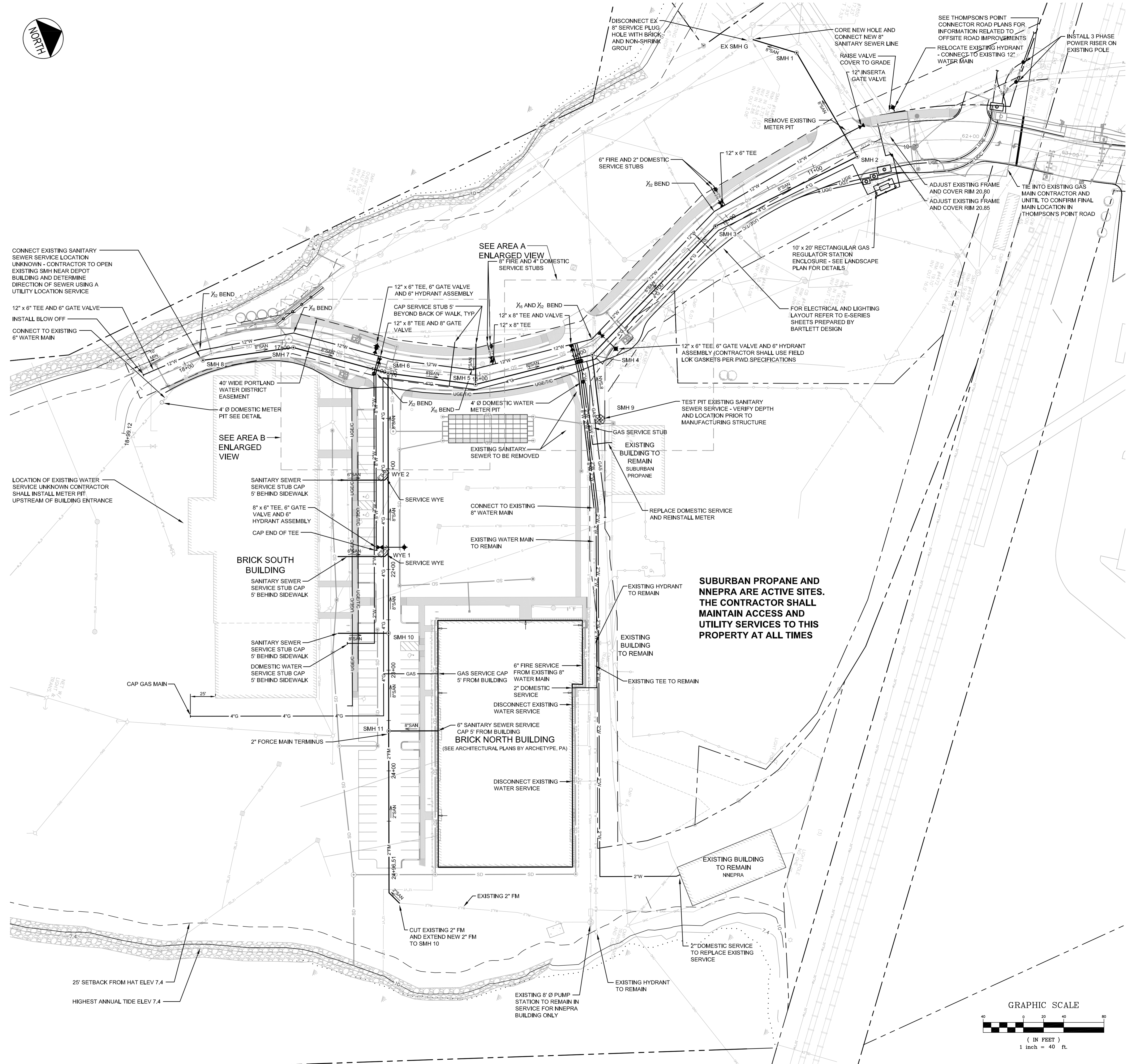


AREA A ENLARGED VIEW
1" = 20'



AREA B ENLARGED VIEW
1" = 20'



CONNECT EXISTING SANITARY SEWER SERVICE LOCATION UNKNOWN - CONTRACTOR TO OPEN EXISTING SMH NEAR DEPOT BUILDING AND DETERMINE DIRECTION OF SEWER USING A UTILITY LOCATION SERVICE

12" x 6" TEE AND 6" GATE VALVE INSTALL BLOW OFF
CONNECT TO EXISTING 6" WATER MAIN

LOCATION OF EXISTING WATER SERVICE STUB UNKNOWN CONTRACTOR SHALL INSTALL METER PIT UPSTREAM OF BUILDING ENTRANCE

SANITARY SEWER SERVICE STUB CAP 5' BEHIND SIDEWALK
8" x 6" TEE, 6" GATE VALVE AND 6" HYDRANT ASSEMBLY
CAP END OF TEE

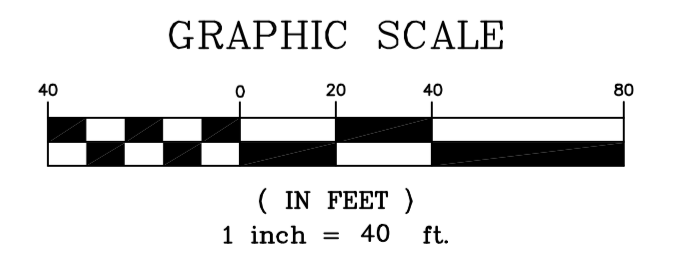
BRICK SOUTH BUILDING
SANITARY SEWER SERVICE STUB CAP 5' BEHIND SIDEWALK

SANITARY SEWER SERVICE STUB CAP 5' BEHIND SIDEWALK
DOMESTIC WATER SERVICE STUB CAP 5' BEHIND SIDEWALK

BRICK NORTH BUILDING
(SEE ARCHITECTURAL PLANS BY ARCHETYPE, PA)
DISCONNECT EXISTING WATER SERVICE

SUBURBAN PROPANE AND NNEPR ARE ACTIVE SITES. THE CONTRACTOR SHALL MAINTAIN ACCESS AND UTILITY SERVICES TO THIS PROPERTY AT ALL TIMES

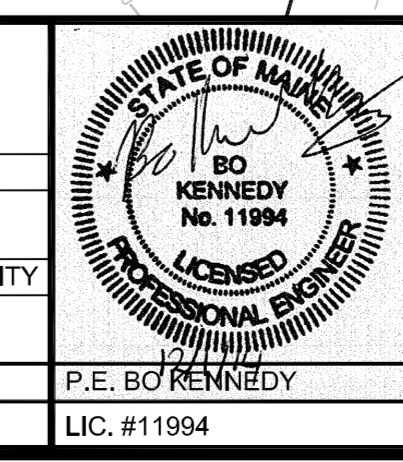
25' SETBACK FROM HAT ELEV 7.4
HIGHEST ANNUAL TIDE ELEV 7.4



NOTES:
1. ALL UTILITY SERVICE LOCATIONS ARE SUBJECT TO COORDINATION AND ADJUSTMENT AS PART OF CONSTRUCTION DOCUMENT PREPARATION
2. SEE SITE LIGHTING PLANS BY BARTLETT DESIGN FOR PROPOSED LIGHT POLE LOCATIONS
3. EXISTING UTILITY SERVICE LOCATIONS ARE UNKNOWN, THE CONTRACTOR SHALL CONDUCT TEST PITS TO VERIFY LOCATIONS OF ALL EXISTING SERVICES, EXISTING SERVICE STUBS ARE TO BE CONNECTED TO NEW LEADS PROVIDED AS PART OF THIS CONTRACT.

PRELIMINARY - NOT FOR CONSTRUCTION

REV	DATE	DESCRIPTION
4	12.01.14	FINAL PHASE 1A SITE PLAN SUBMITTED TO CITY
3	09.10.14	REV. PER INTERNAL REVIEW PWD AND UNTIL COMMENTS
2	07.29.14	REVISED PHASE 1A SITE PLAN SUBMITTED TO CITY
1	06.30.14	AMENDED PHASE 1A SITE PLAN SUBMITTED TO CITY



PROJECT: BRICK NORTH BUILDING AT THE FOREFRONT AT THOMPSON'S POINT
SHEET TITLE: STAND ALONE BRICK NORTH UTILITY PLAN
CLIENT: FOREFRONT PARTNERS | LP

FST FAY, SPOFFORD & THORNDIKE
ENGINEERS · PLANNERS · SCIENTISTS
778 MAIN ST., SUITE 6, SOUTH PORTLAND, ME 04106

DATE OF APPROVAL: Dec 4, 2014
PLANNER: Christine Grimando
PROJECT NO.: 2014-120