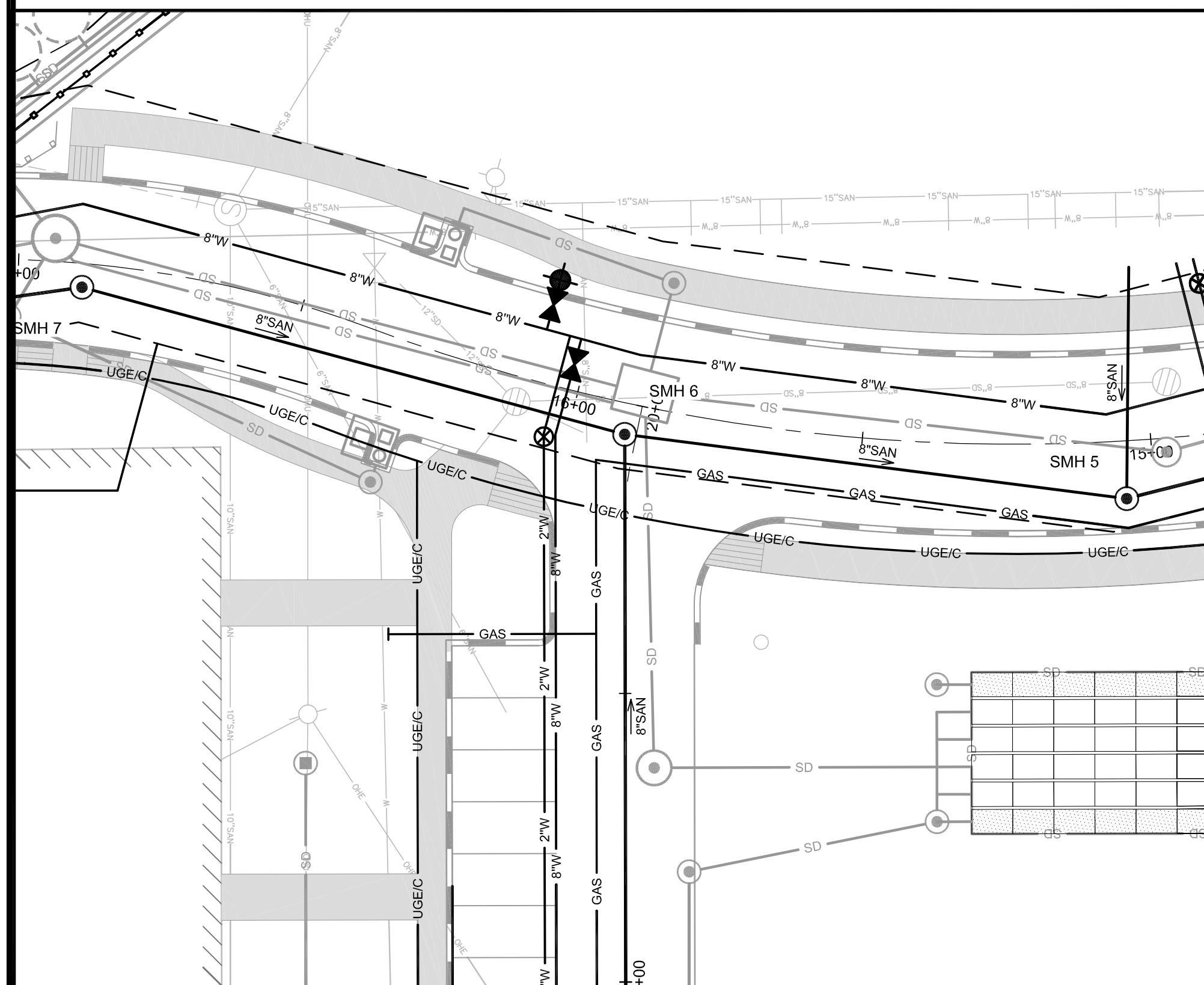
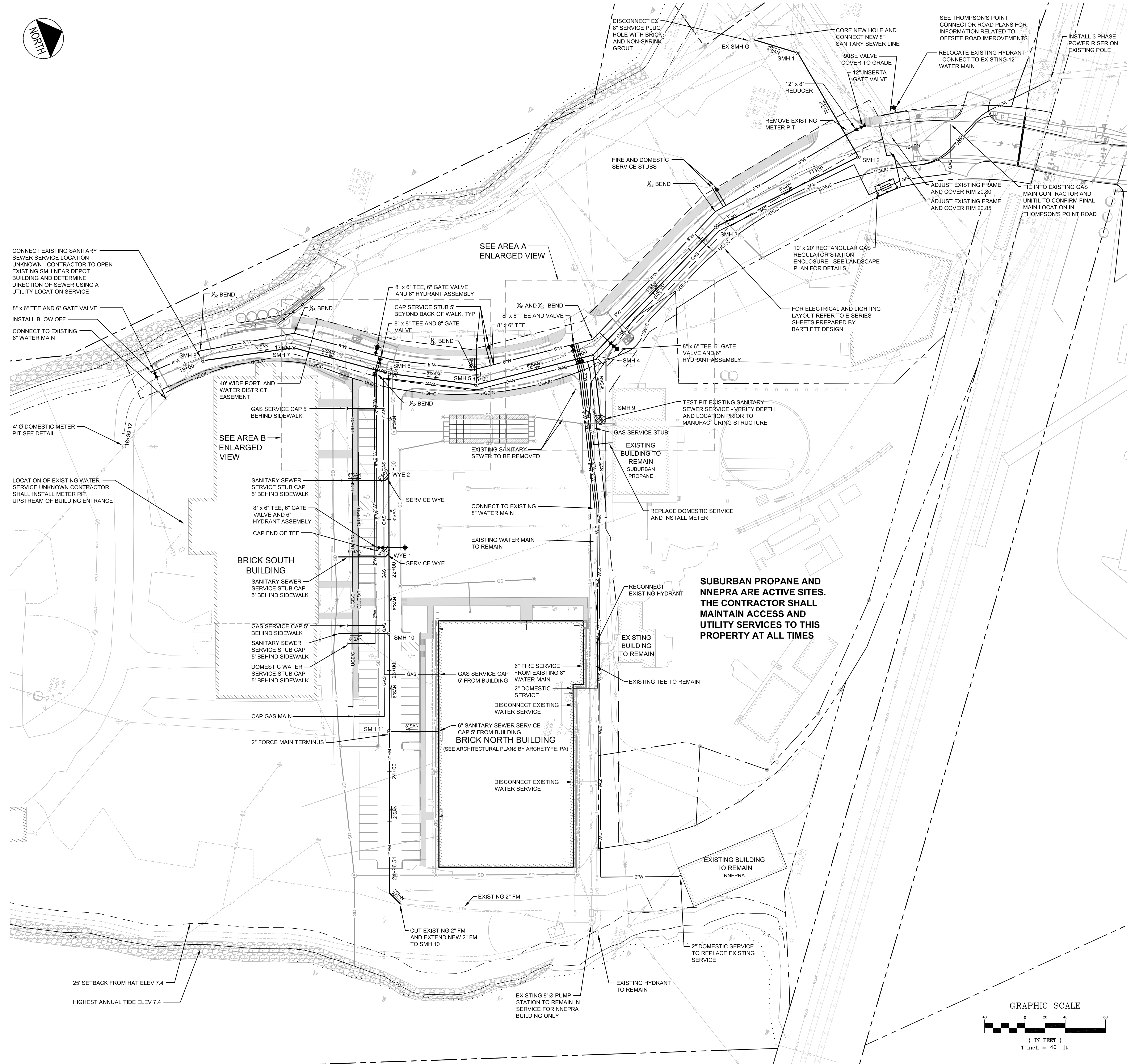


AREA A ENLARGED VIEW
1" = 20'



AREA B ENLARGED VIEW
1" = 20'

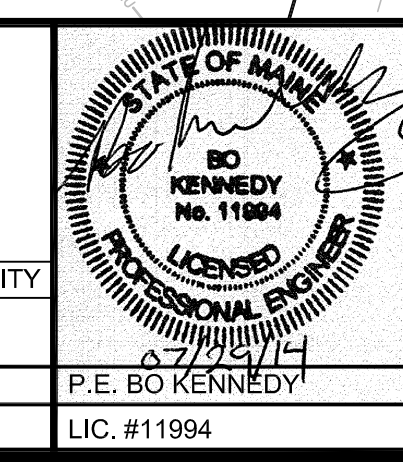


NOTES:
1. ALL UTILITY SERVICE LOCATIONS ARE SUBJECT TO COORDINATION AND ADJUSTMENT AS PART OF CONSTRUCTION DOCUMENT PREPARATION
2. SEE SITE LIGHTING PLANS BY BARTLETT DESIGN FOR PROPOSED LIGHT POLE LOCATIONS
3. EXISTING UTILITY SERVICE LOCATIONS ARE UNKNOWN. THE CONTRACTOR SHALL CONDUCT TEST PITS TO VERIFY LOCATIONS OF ALL EXISTING SERVICES. EXISTING SERVICE STUBS ARE TO BE CONNECTED TO NEW LEADS PROVIDE AS PART OF THIS CONTRACT.

PRELIMINARY - NOT FOR CONSTRUCTION

| REV | DATE | DESCRIPTION | REVISIONS |
|-----|----------|--|-----------|
| 2 | 07.29.14 | REVISED PHASE 1A SITE PLAN SUBMITTED TO CITY | |
| 1 | 06.30.14 | AMENDED PHASE 1A SITE PLAN SUBMITTED TO CITY | |

PROJECT: BRICK NORTH BUILDING AT THE FOREFRONT AT THOMPSON'S POINT
SHEET TITLE: STAND ALONE BRICK NORTH UTILITY PLAN
CLIENT: FOREFRONT PARTNERS | LP



FST FAY, SPOFFORD & THORNDIKE
ENGINEERS - PLANNERS - SCIENTISTS
778 MAIN ST, SUITE 8, SOUTH PORTLAND, ME 04106

DRAWN: DEB DATE: JUNE 2014
DESIGNED: BEK SCALE: 1" = 40'
CHECKED: SRB JOB NO. 2982.05
FILE NAME: 2982.05-BN UTILITY
SHEET: C-4.0

