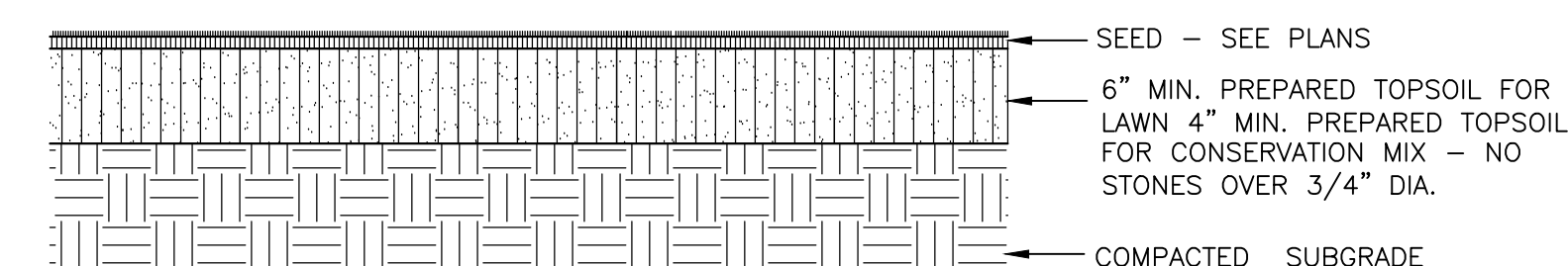


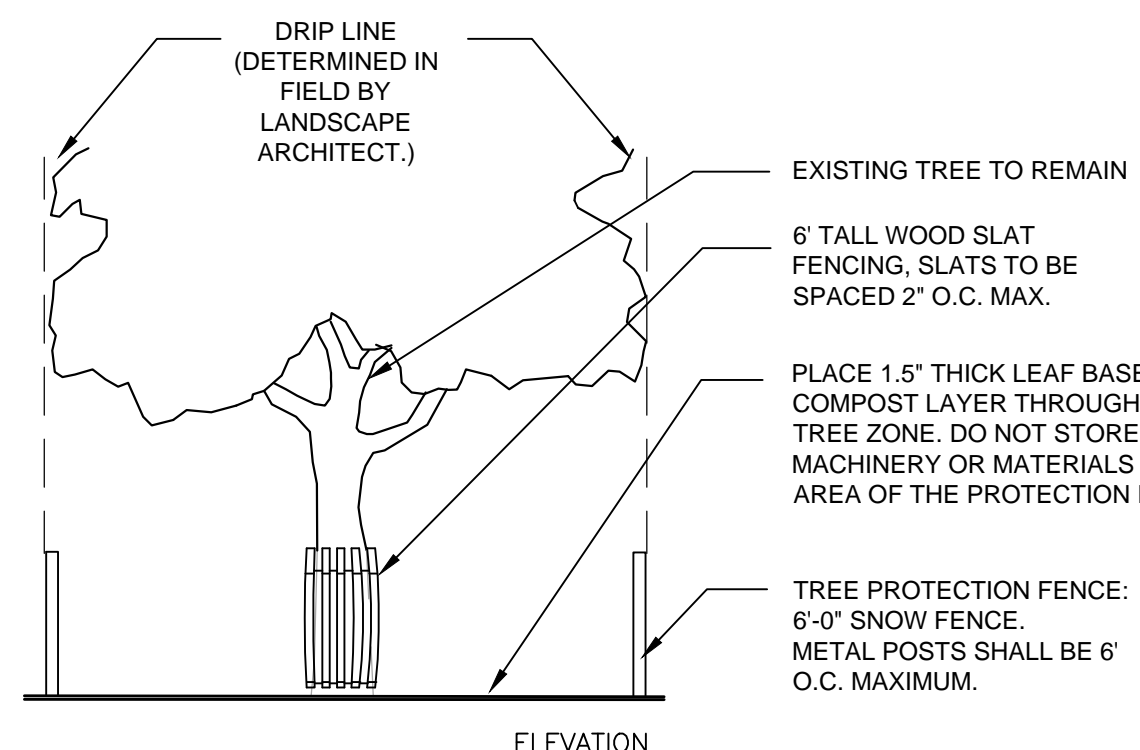
PLANT SCHEDULE

QTY.	SYM.	BOTANICAL NAME	COMMON NAME	SIZE	REMARKS	NATIVE
13	AC	AMELANCHIER CANADENSIS	SERVICEBERRY	8-10' HT.	B&B, MULTI-STEM	X
6	BP	BETULA PAPYRIFERA 'RENAISSANCE REFLECTION'	PAPER BIRCH	10-12' HT.	B&B, MULTI-STEM	X
18	GB	GINKGO BILOBA 'AUTUMN GOLD'	AUTUMN GOLD GINKGO	2-2.5" CAL.	B&B	
6	LS	LIQUIDAMBAR STYRACIFLUA 'MORAIN'	MORAIN SWEETGUM	2.5-3" CAL.	B&B	
8	MP	MALUS 'PRAIRIEFIRE'	PRAIRIEFIRE CRABAPPLE	2-2.5" CAL.	B&B	X
7	QP	QUERCUS PALUSTRIS	PIN OAK	2.5" CAL.	B&B	X
26	UA	ULMUS AMERICANA 'PRINCETON'	PRINCETON AMERICAN ELM	2.5" CAL.	B&B	X

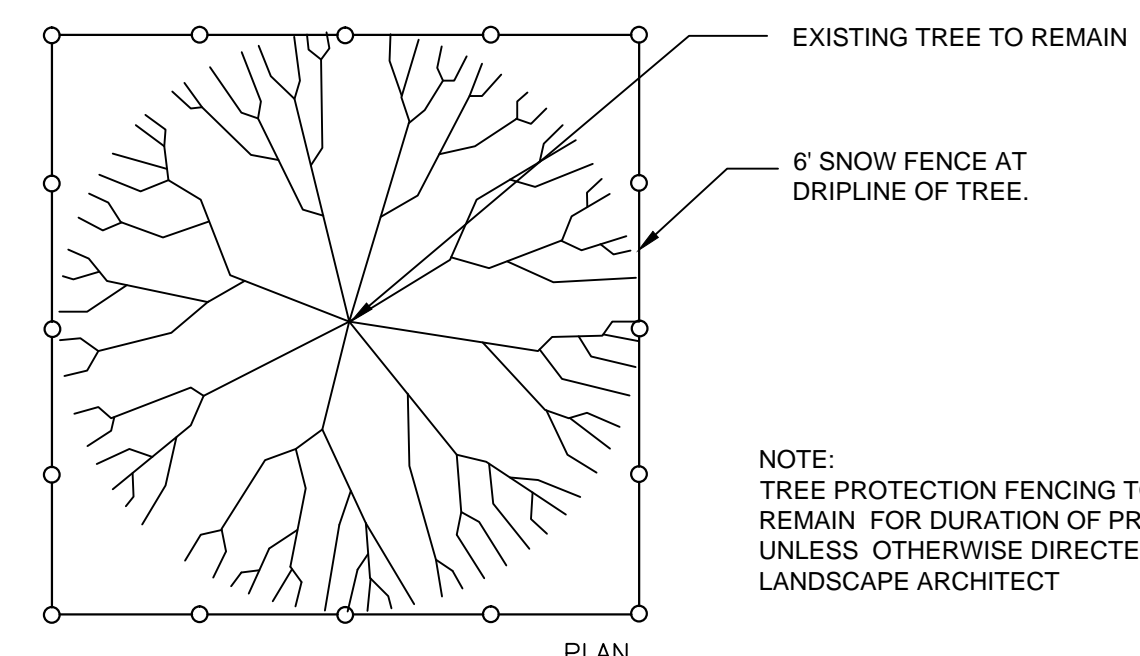


SEEDED LAWN DETAIL

SCALE: N.T.S.



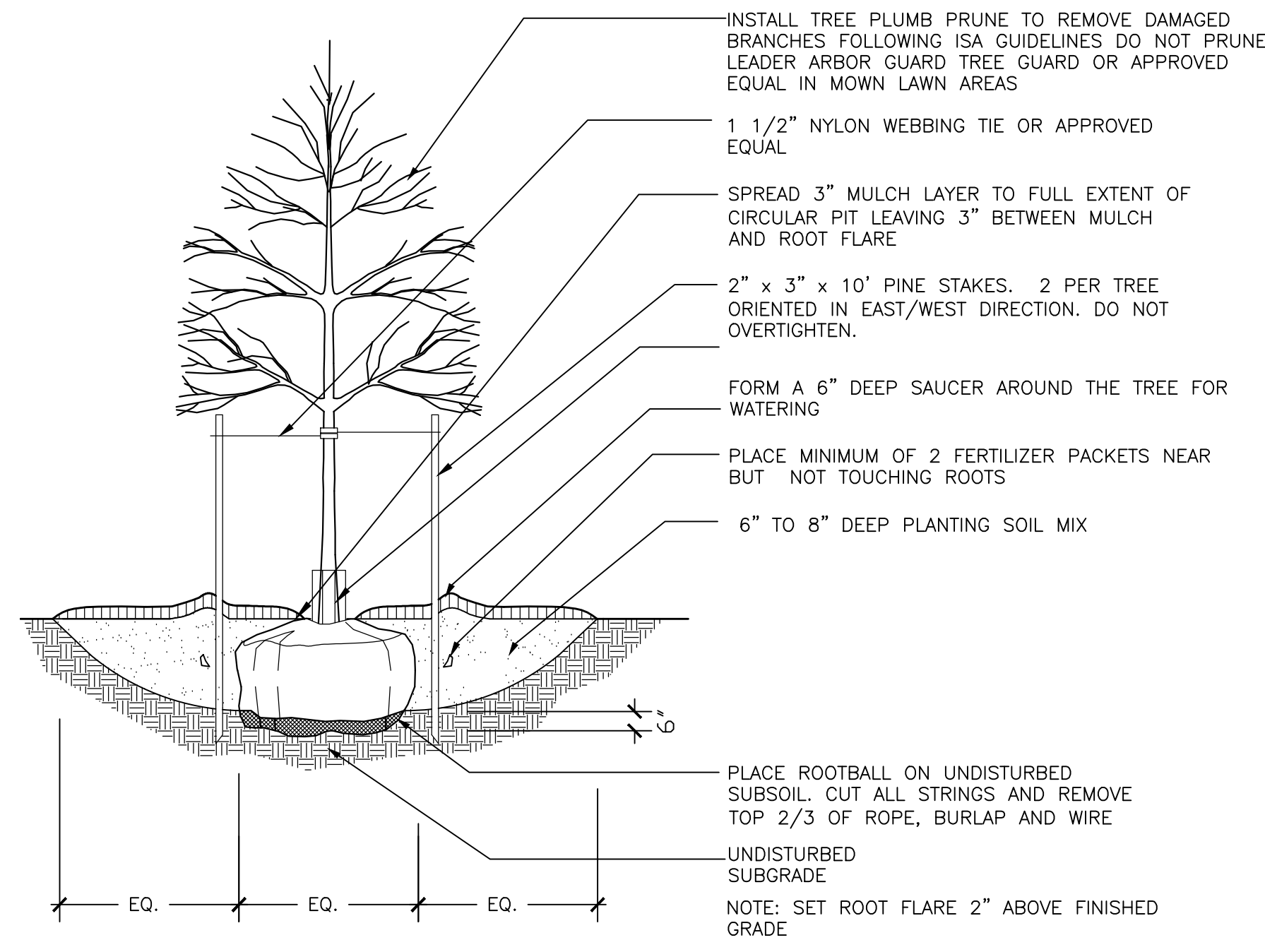
ELEVATION



PLAN

TREE PROTECTION DETAIL

SCALE: N.T.S.



TREE PLANTING DETAIL

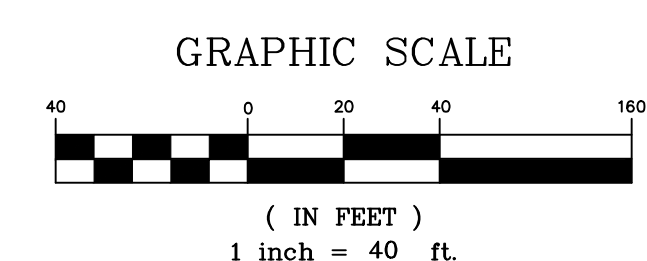
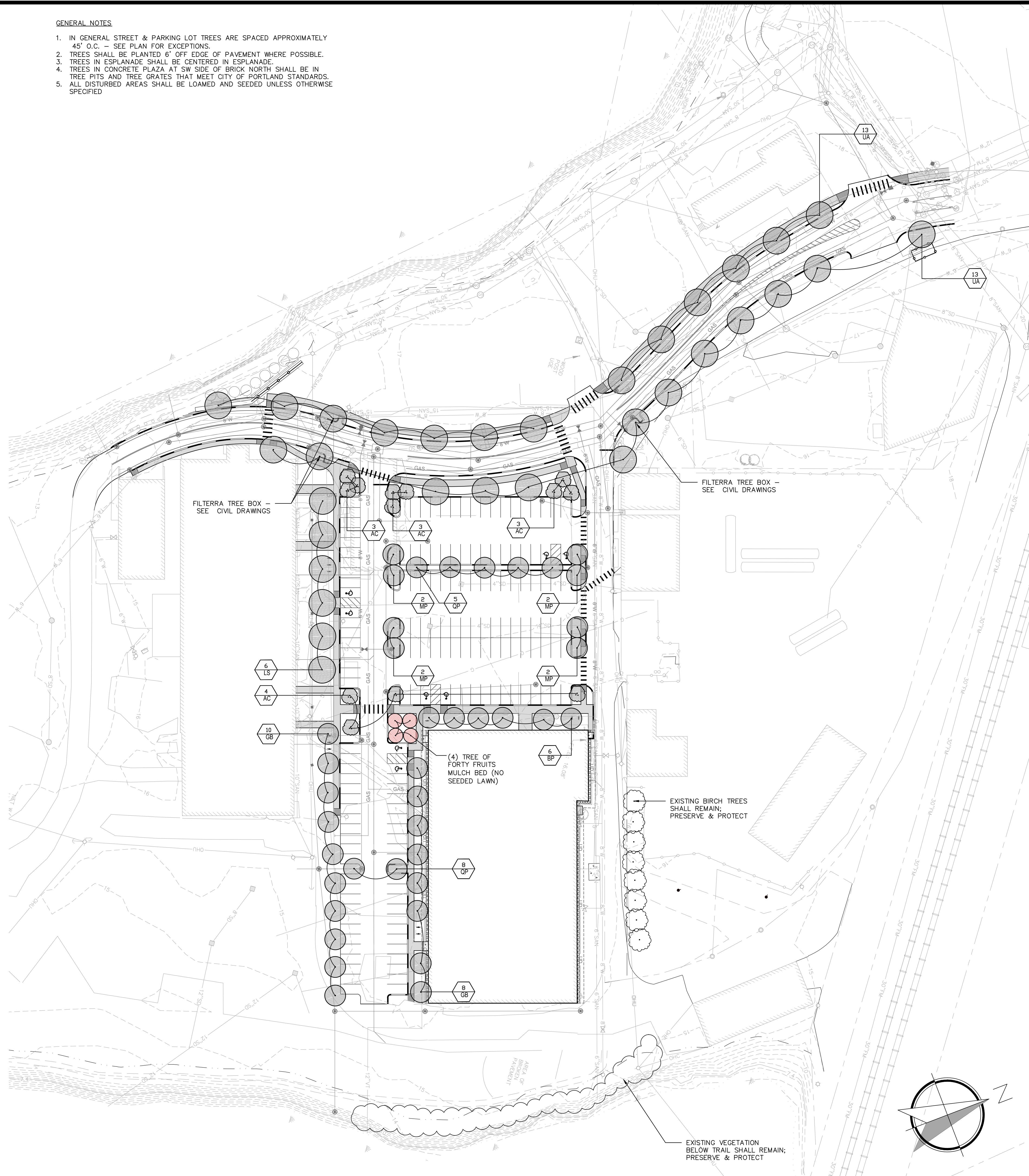
SCALE: N.T.S.

PLANTING NOTES

- CONTRACTOR SHALL BEGIN MAINTENANCE IMMEDIATELY AFTER PLANTING AND SHALL CONTINUE UNTIL FINAL ACCEPTANCE. CONTRACTOR SHALL BE RESPONSIBLE FOR ALL MEANS AND METHODS OF WATERING AND MAINTENANCE.
- CONTRACTOR SHALL SUPPLY PLANTS IN QUANTITIES SUFFICIENT TO COMPLETE WORK SHOWN ON THE PLAN. ANY DISCREPANCY BETWEEN THE QUANTITIES SHOWN IN THE PLANT SCHEDULE AND THOSE REQUIRED ON THE PLAN SHALL NOT ENTITLE THE CONTRACTOR TO ADDITIONAL REMUNERATION. ANY DISCREPANCIES SHALL BE CLARIFIED WITH THE LANDSCAPE ARCHITECT PRIOR TO ORDERING PLANT MATERIAL.
- ALL MATERIALS SHALL CONFORM TO SPECIFICATIONS OF THE AMERICAN STANDARDS FOR NURSERY STOCK (LATEST EDITION) AS SET FORTH BY THE AMERICAN ASSOCIATION OF NURSERYMEN.
- ALL PLANTS SHALL BEAR THE SAME RELATIONSHIP TO FINISH GRADE AS THE ORIGINAL GRADES BEFORE DIGGING.
- THE LANDSCAPE CONTRACTOR SHALL GUARANTEE ALL PLANT MATERIALS FOR ONE (1) FULL YEAR FROM DATE OF SUBSTANTIAL COMPLETION.
- ALL PLANT MATERIALS ARE SUBJECT TO THE APPROVAL OF THE LANDSCAPE ARCHITECT AT THE NURSERY AND AT THE SITE.
- ALL PLANT BEDS SHALL MEET MINIMUM TOPSOIL REQUIREMENTS (SEE SPECIFICATIONS).
- NO PLANT MATERIAL SHALL BE INSTALLED UNTIL GRUBBING, BED PREPARATION, AND FINISH GRADING HAS BEEN COMPLETED IN THE IMMEDIATE AREA.
- ALL PLANT BEDS AND TREE WELLS SHALL BE SPADE EDGED, AND SHALL HAVE A MINIMUM OF 3" OF UNIFORMLY DISTRIBUTED, DARK, SHREDDED BARK MULCH. CONTRACTOR SHALL SUBMIT MULCH SAMPLE TO L.A. PRIOR TO INSTALLATION.
- CONTRACTOR SHALL SUBMIT SOIL SAMPLE AND TEST OF TOPSOIL TO LANDSCAPE ARCHITECT PRIOR TO INSTALLATION. SOIL ADMIXTURE SHALL BE ADDED TO EXISTING SOIL (BY CONTRACTOR) IF DEEMED NECESSARY BY SOIL TEST RESULTS.
- ROUGH GRADING AND BED PREPARATION SHALL BE APPROVED BY LANDSCAPE ARCHITECT PRIOR TO PLANT INSTALLATION. CONTRACTOR SHALL NOTIFY LANDSCAPE ARCHITECT 24 HOURS PRIOR TO REQUIRED SITE VISIT.
- ALL PLANTS SHALL BE BALLED AND WRAPPED OR CONTAINER GROWN AS SPECIFIED. ALL ROOT WRAPPING, WIRE BASKETS, AND CONTAINER MATERIAL MADE OF SYNTHETICS OR PLASTICS SHALL BE REMOVED AT THE TIME OF PLANTING.
- ALL BROAD LEAF EVERGREEN PLANTS SHALL BE SPRAYED WITH AN ANTI-DESSICANT AT THE BEGINNING OF THEIR FIRST WINTER.
- ALL PLANTS SHALL BE INSTALLED AS PER DETAILS AND THE CONTRACT SPECIFICATIONS. THE LANDSCAPE CONTRACTOR SHALL REFER TO THE CONTRACT SPECIFICATIONS FOR ADDITIONAL REQUIREMENTS.
- CONTRACTOR SHALL STAKE TREES, IF DEEMED NECESSARY BY PROJECT L.A.
- THE LANDSCAPE CONTRACTOR SHALL PROVIDE LOAM BACKFILL AS PER THE CONTRACT SPECIFICATIONS.
- ALL PLANTS SHALL BE WATERED BY THE CONTRACTOR, AS NECESSARY, TO INSURE HEALTH UNTIL FINAL ACCEPTANCE.
- THE LANDSCAPE CONTRACTOR SHALL REFER TO THE PLANT LIST AND PLANTING SPECIFICATIONS FOR SEASONAL REQUIREMENTS AND OTHER RESTRICTIONS RELATED TO THE TIME AND SEASON OF PLANTING.

GENERAL NOTES

- IN GENERAL STREET & PARKING LOT TREES ARE SPACED APPROXIMATELY 45' O.C. - SEE PLAN FOR EXCEPTIONS.
- TREES SHALL BE PLANTED 6" OFF EDGE OF PAVEMENT WHERE POSSIBLE.
- TREES IN ESPLANADE SHALL BE CENTERED IN ESPLANADE.
- TREES IN CONCRETE PLAZA AT SW SIDE OF BRICK NORTH SHALL BE IN TREE PITS AND TREE GRATES THAT MEET CITY OF PORTLAND STANDARDS.
- ALL DISTURBED AREAS SHALL BE LOAMED AND SEEDED UNLESS OTHERWISE SPECIFIED.



C
CARROLL ASSOCIATES
 LANDSCAPE ARCHITECTS
 217 COMMERCIAL STREET, STE 200
 PORTLAND, MAINE 04101
 207.772.1552 V. F. 207.772.0212

REV	DATE	DESCRIPTION	REVISIONS	LIC. #
1	06.23.14	AMENDED SITE PLAN SUBMITTED TO CITY		

PROJECT
BRICK NORTH BUILDING AT THE FOREFRONT AT THOMPSON'S POINT
 SHEET TITLE
STAND ALONE BRICK NORTH LANDSCAPE PLAN
 CLIENT
FOREFRONT PARTNERS | LP

FAY, SPOFFORD & THORNDIKE
 ENGINEERS • PLANNERS • SCIENTISTS
 778 MAIN ST, SUITE 8, SOUTH PORTLAND, ME 04106

DRAWN: - DATE: June 30, 2014
 DESIGNED: - SCALE: -
 CHECKED: - JOB NO. -
 FILE NAME: CA-LANDSCAPE-PLAN.DWG
 SHEET **L-1.0**