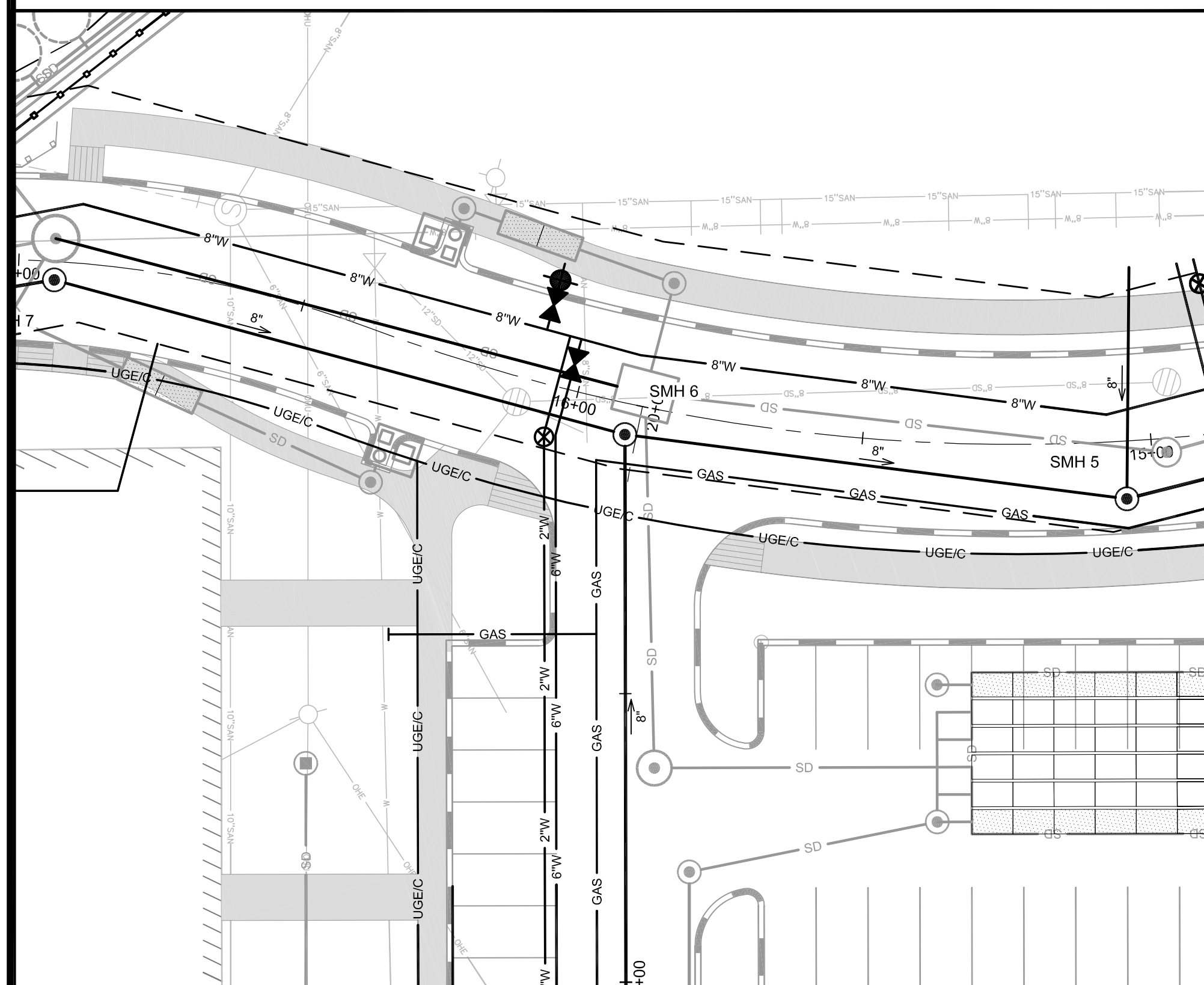
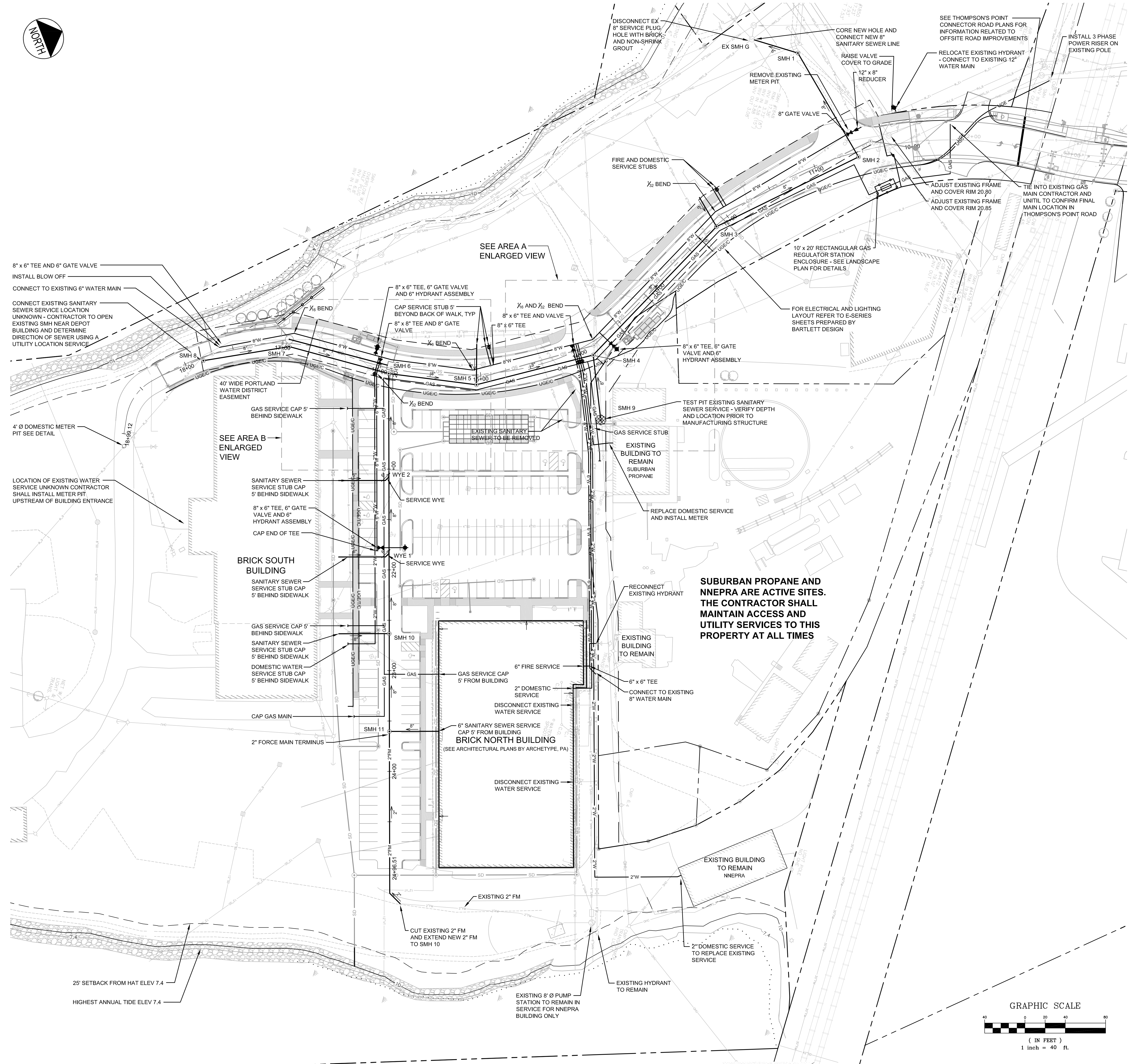


AREA A ENLARGED VIEW  
1" = 20'



AREA B ENLARGED VIEW  
1" = 20'

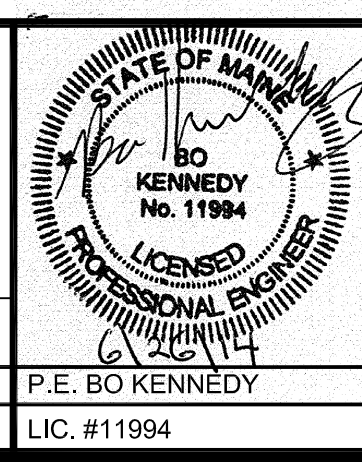


**NOTES:**

1. ALL UTILITY SERVICE LOCATIONS ARE SUBJECT TO COORDINATION AND ADJUSTMENT AS PART OF CONSTRUCTION DOCUMENT PREPARATION
2. SEE SITE LIGHTING PLANS BY BARTLETT DESIGN FOR PROPOSED LIGHT POLE LOCATIONS
3. EXISTING UTILITY SERVICE LOCATIONS ARE UNKNOWN. THE CONTRACTOR SHALL CONDUCT TEST PITS TO VERIFY LOCATIONS OF ALL EXISTING SERVICES. EXISTING SERVICE STUBS ARE TO BE CONNECTED TO NEW LEADS PROVIDED AS PART OF THIS CONTRACT.

PRELIMINARY - NOT FOR CONSTRUCTION

| REV | DATE     | DESCRIPTION                                  | REVISIONS |
|-----|----------|--|-----------|
| 1   | 06.30.14 | AMENDED PHASE 1A SITE PLAN SUBMITTED TO CITY |           |



PROJECT: BRICK NORTH BUILDING AT THE FOREFRONT AT THOMPSON'S POINT  
SHEET TITLE: STAND ALONE BRICK NORTH UTILITY PLAN  
CLIENT: FOREFRONT PARTNERS | LP

**FST** FAY, SPOFFORD & THORNDIKE  
ENGINEERS - PLANNERS - SCIENTISTS  
778 MAIN ST, SUITE 8, SOUTH PORTLAND, ME 04106

DATE: JUNE 2014  
SCALE: 1" = 40'  
JOB NO. 2982.05  
FILE NAME: 2982.05-BN UTILITY  
SHEET: C-4.0

