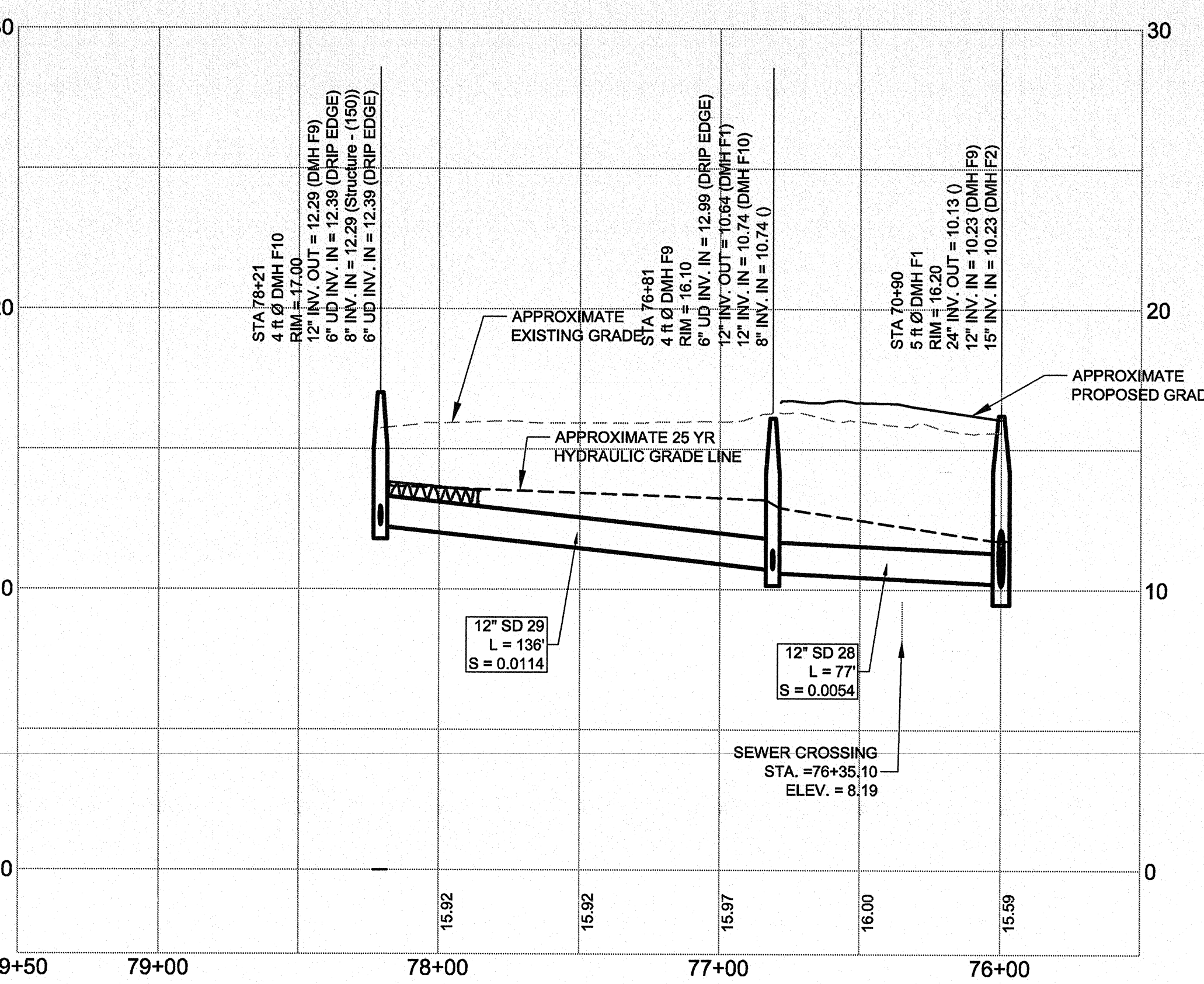
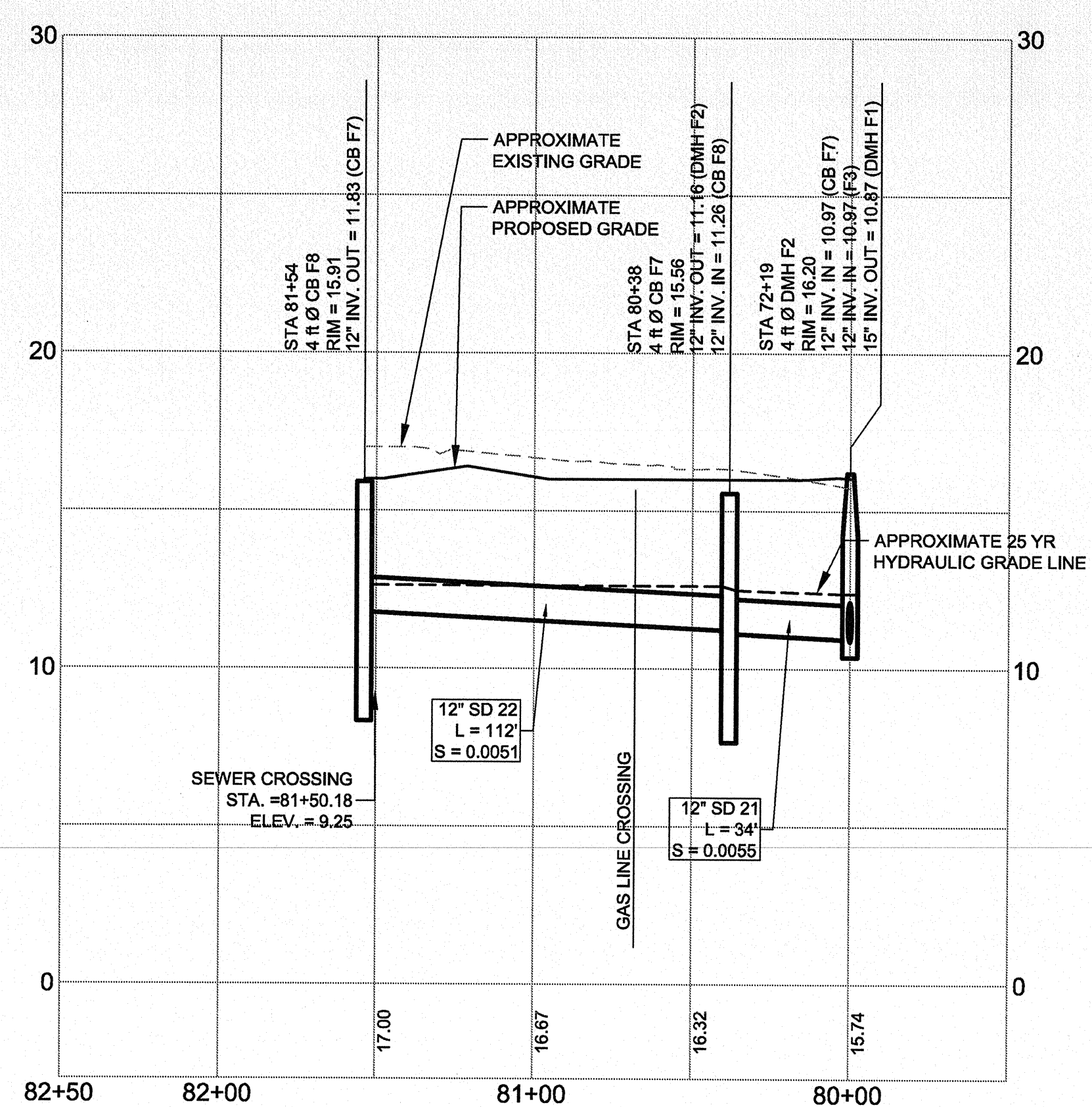


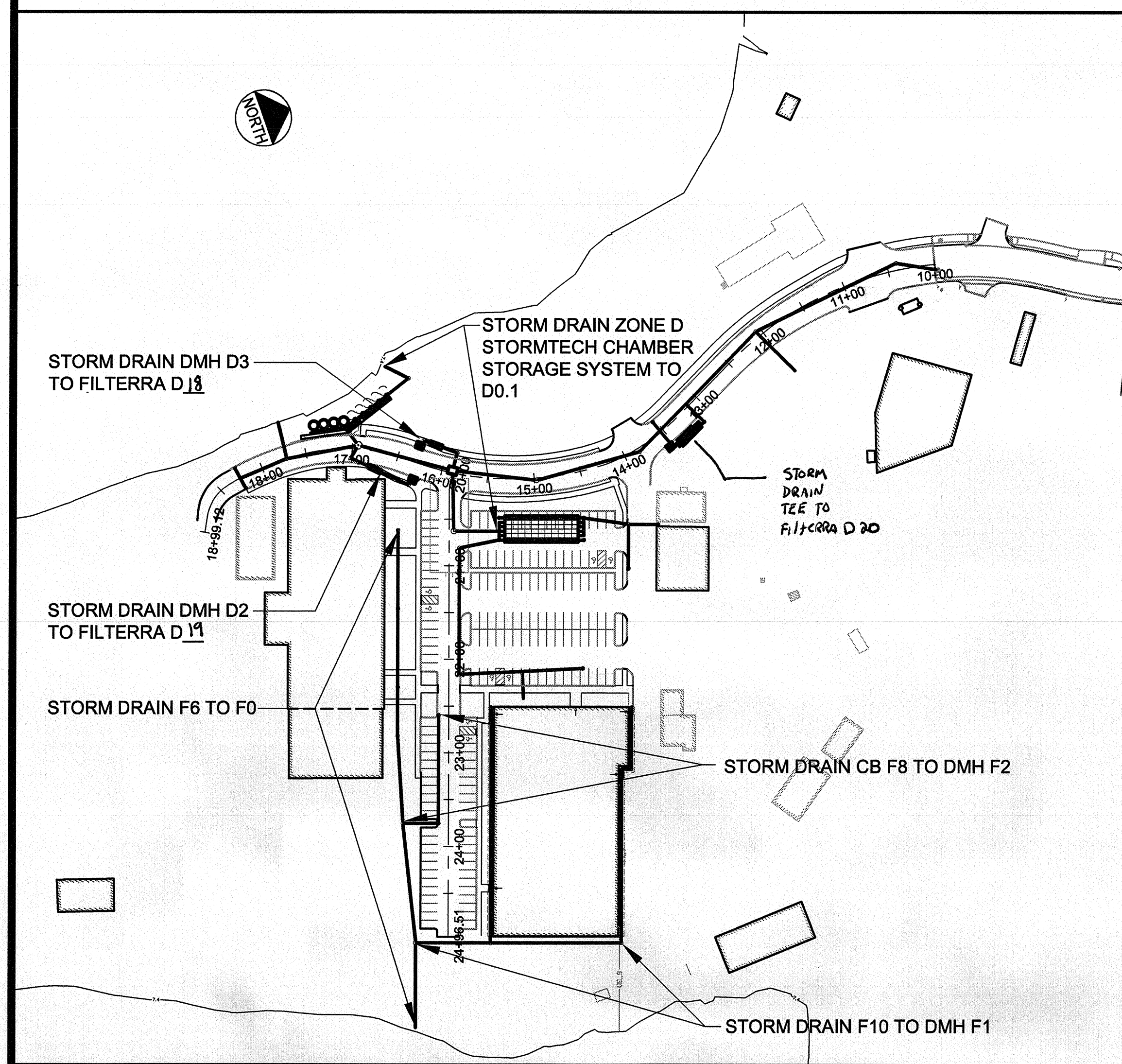
**STORM DRAIN PROFILE - F6 TO F0**  
SCALE: H 1" = 4'  
V 1" = 4'



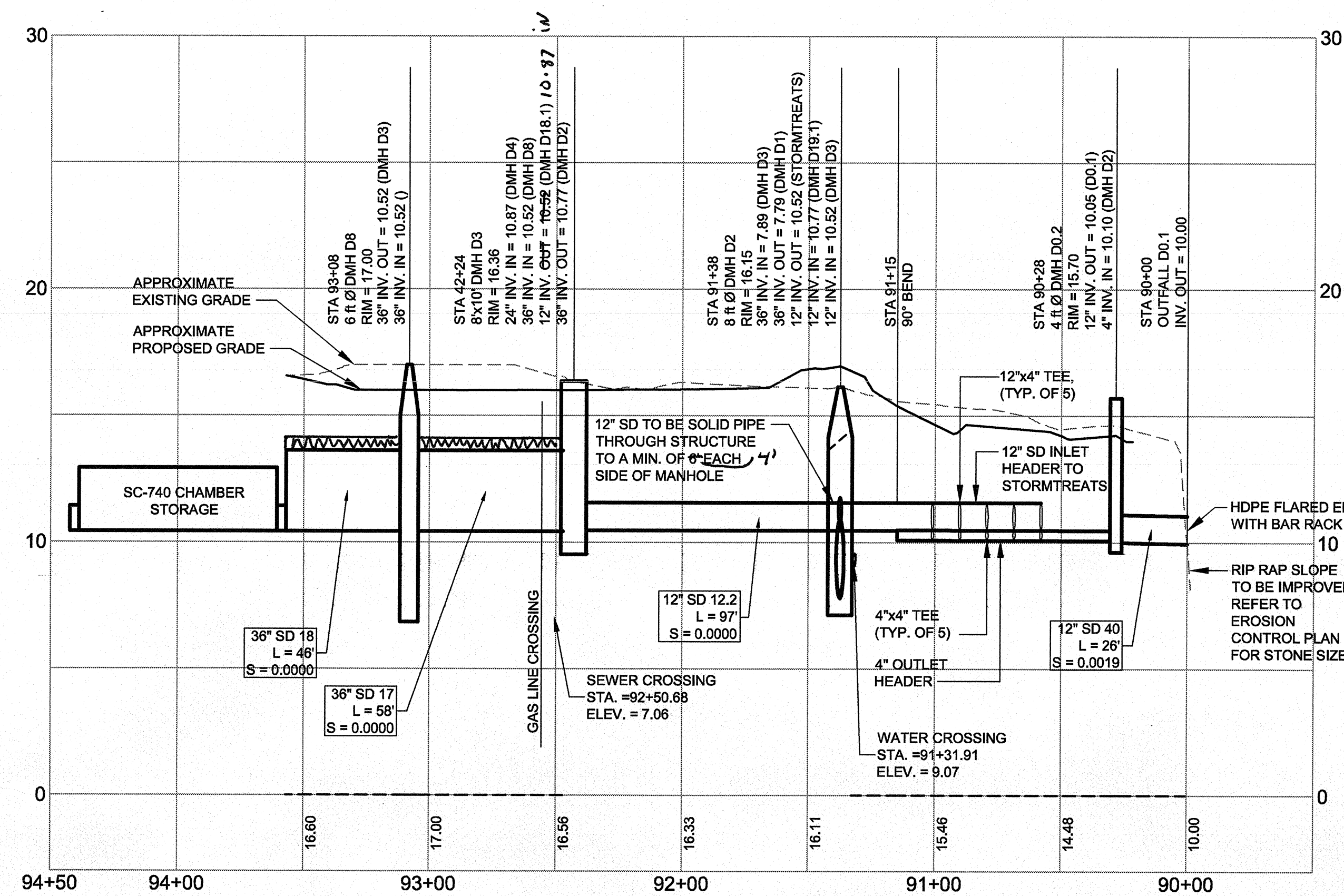
**STORM DRAIN PROFILE - F10 TO DMH F1**  
SCALE: H 1" = 4'  
V 1" = 4'



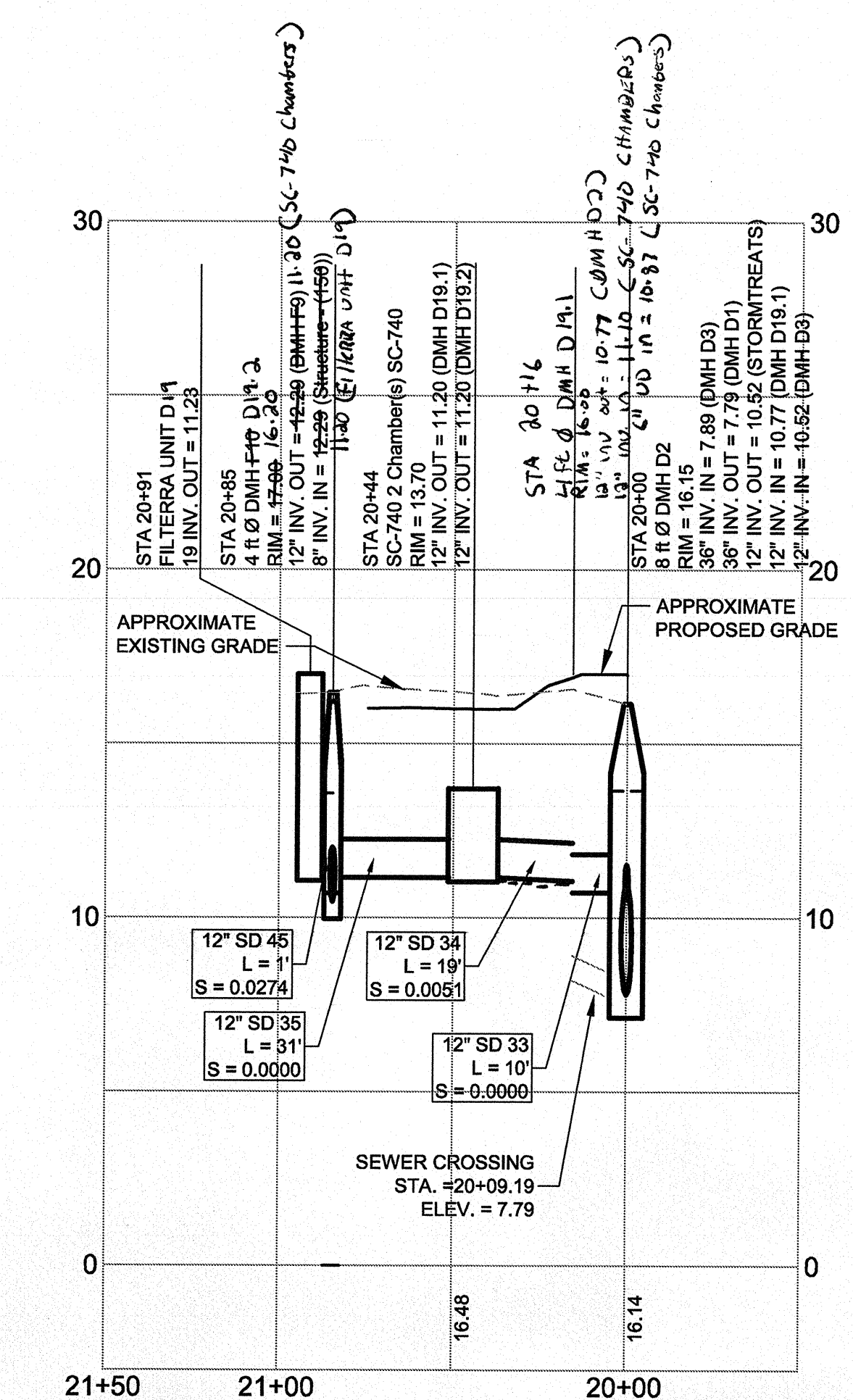
**STORM DRAIN PROFILE - CB F8 TO DMH F2**  
SCALE: H 1" = 4'  
V 1" = 4'



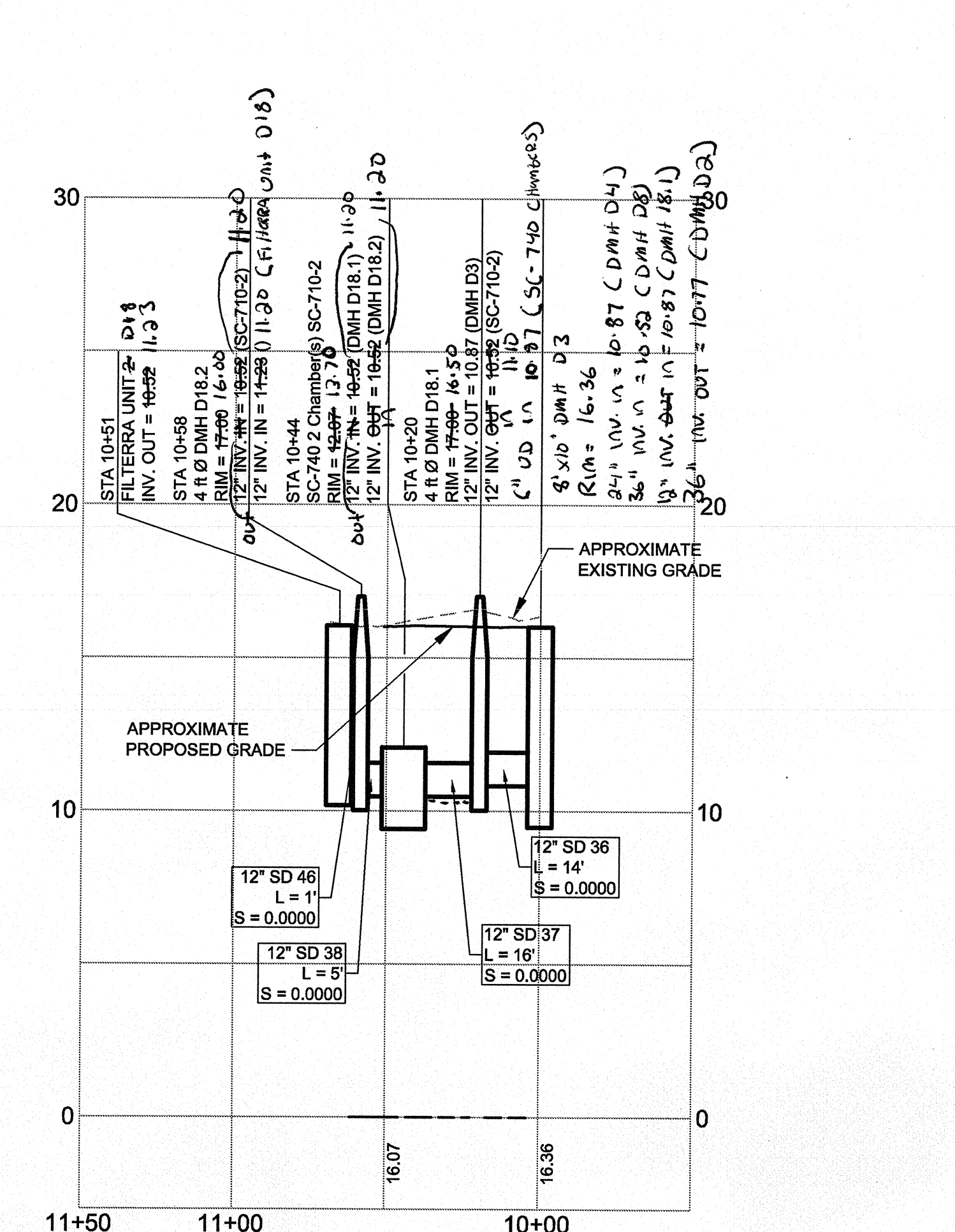
**ORIENTATION SKETCH**  
N.T.S.



**STORM DRAIN PROFILE - ZONE D STORMTECH CHAMBER STORAGE SYSTEM TO D0.1**  
SCALE: H 1" = 4'  
V 1" = 4'



**STORM DRAIN PROFILE - DMH D2 TO FILTERRA 4 D1**  
SCALE: H 1" = 4'  
V 1" = 4'



**STORM DRAIN PROFILE - DMH D3 TO FILTERRA 2 D1**  
SCALE: H 1" = 4'  
V 1" = 4'

PROJECT		BRICK NORTH BUILDING AT THE FOREFRONT AT THOMPSON'S POINT		FST FAY, SPOFFORD & THORNDIKE ENGINEERS - PLANNERS - SCIENTISTS 778 MAIN ST, SUITE 6, SOUTH PORTLAND, ME 04106	
SHEET TITLE		STORM DRAIN PROFILES ZONE D AND F		DRAWN: DEB DATE: JUNE 2014	
DESIGNED: BEK		SCALE: 1" = 4'		CHECKED: SRB JOB NO. 2882.05	
FILE NAME: 2882.05-SN PROFILE SEWER		CLIENT		FOREFRONT PARTNERS I, LP	
SHEET		C-12.1		P.E. BO KENNEDY LIC. #11994	

R15082.05 Amended Site Plan Part 10-Cadd/Permit Set.dwg(BRICK NORTH - Amended)2882.05-SN PROFILE SD.dwg dtd\_14/03/2014 2:04 PM