

PACKAGED ROOFTOP UNIT PERFORMANCE SCHEDULE

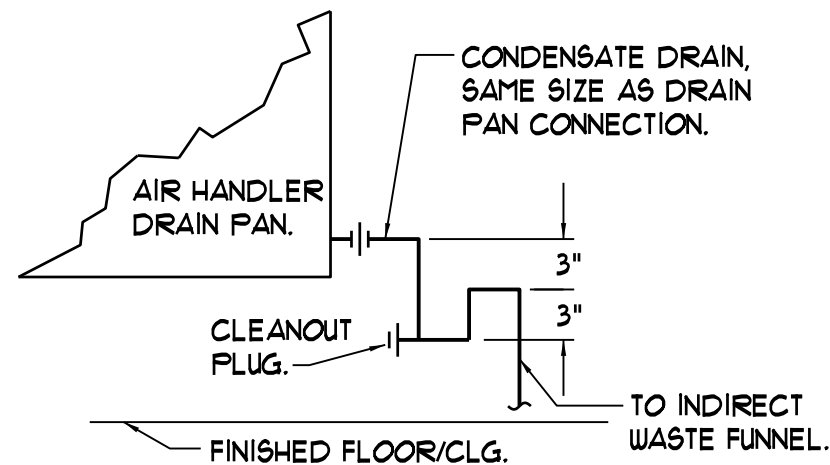
Table with columns for TAG, NOMINAL COOLING (TONS), TOTAL COOLING (MBH), SENSIBLE COOLING (MBH), EDB/EUB OUTSIDE (°F), EDB/EUB POST-WHEEL MIXED (°F), TOTAL AIRFLOW (CFM), E.S.P. SUP/EXH (INWG), SUPPLY FAN RPM, MINIMUM O.A. (CFM), MINIMUM EXHAUST (CFM), FUEL INPUT (MBH), HEATING OUTPUT (MBH), HEATING EAT. POST WHEEL (°F), HEATING LAT (°F), EER (BTUH/WATT), WEIGHT W/ CURB (LBS), TYPE OF REFRIG. ERANT, FUEL, ELECTRICAL REQUIREMENTS (HP, MCA, MOCP, V/PH/Hz), and BASIS OF DESIGN - YORK (SERVICE, MODEL).

PROVIDE ALL UNITS WITH DUAL ENTHALPHY ECONOMIZERS AND TWO STAGE OR MODULATING HEAT. ZJ120 UNITS - PROVIDE WITH ENERGY RECOVERY WHEEL ACCESSORY (COOLING CAPACITIES 4 EDB/EUB ARE AFTER WHEEL). ERY ACCESSORY REQUIRES SEPARATE POWER (MCA 114A, MOCP 15A, 208/3160) AND SUPPLY AND RETURN SMOKE DETECTORS.

FAN PERFORMANCE SCHEDULE

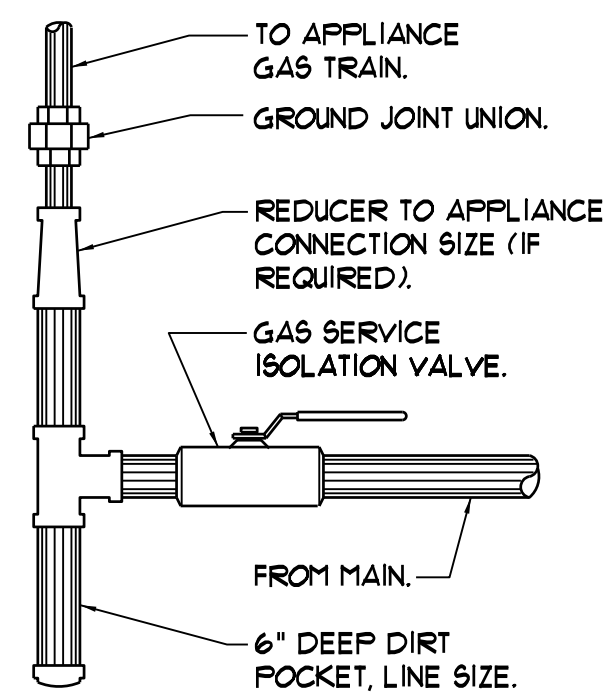
Table with columns for TAG, AIRFLOW (CFM), T.S.P (INWG), NOISE (SONES), RPM, DRIVE, ELECTRICAL REQUIREMENTS (HP, BHP, WATTS, AMPS, V/PH/Hz), and BASIS OF DESIGN - PANASONIC (SERVICE, ARRANGEMENT, MODEL).

PROVIDE EF-1 WITH MANUFACTURER SPECIFIED LAMPS



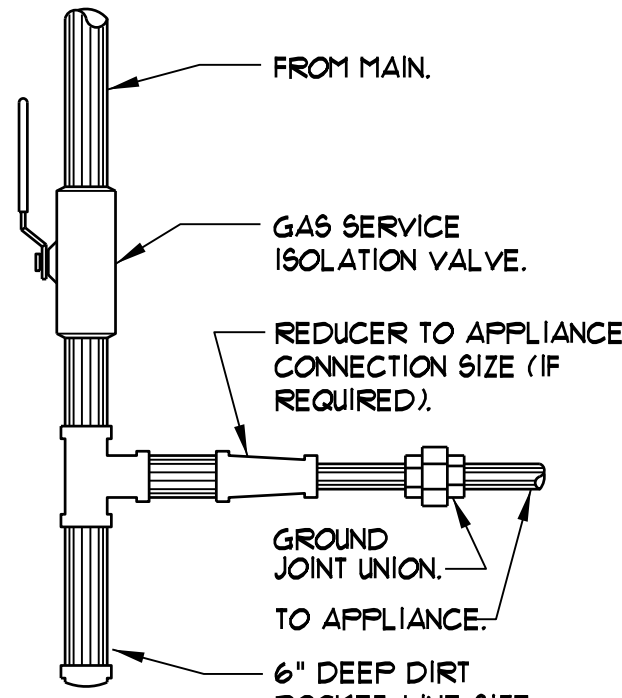
CONDENSATE TRAP DETAIL

NTS NOTE - CAP UNUSED DRAIN PAN CONNECTIONS.



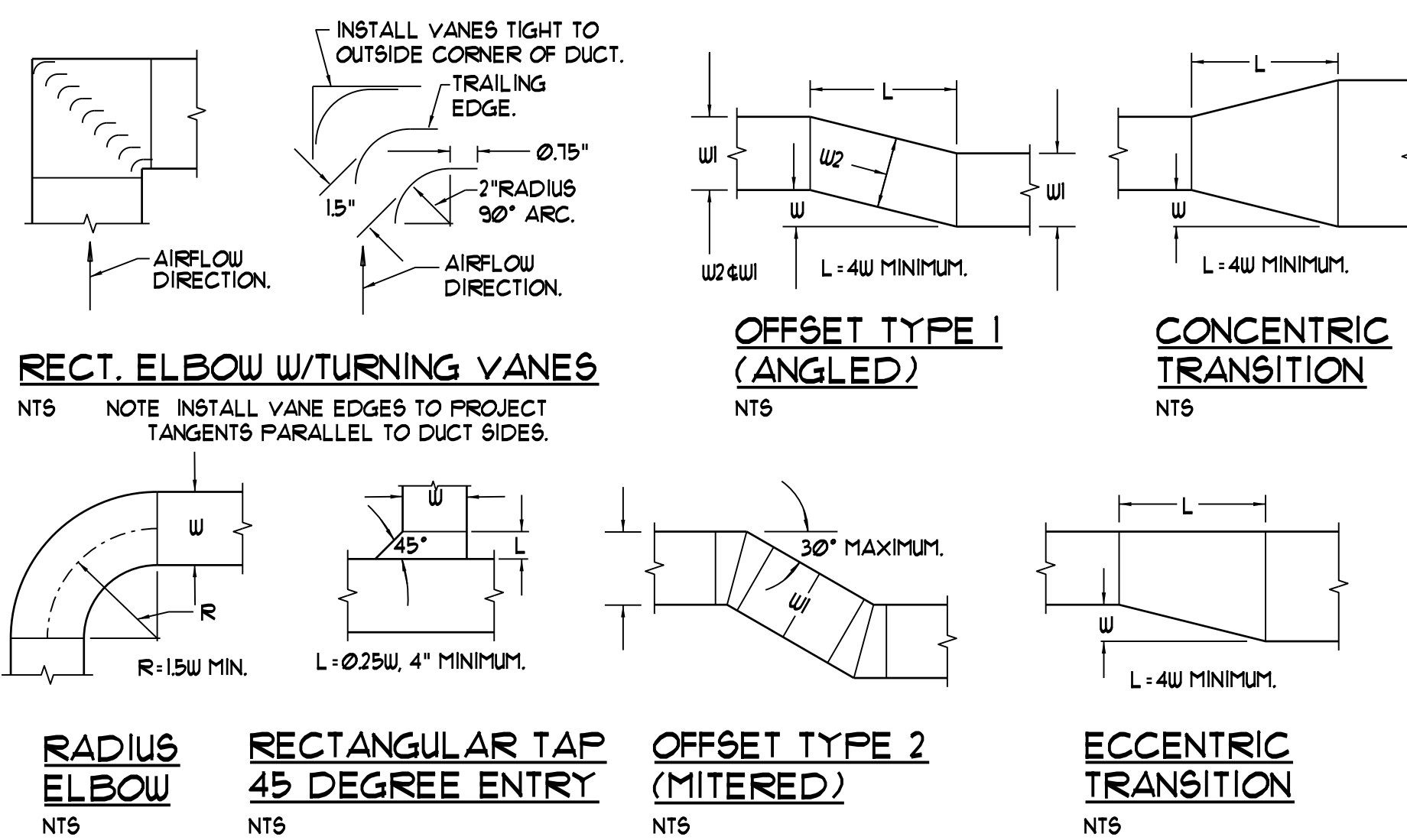
UPFEED GAS PIPING CONNECTION DETAIL

NOTE APPLIANCES WITH REGULATORS LOCATE PIPING SHOWN HEREIN UPSTREAM OF THE APPLIANCE REGULATOR. PROVIDE A TEST PLUG DOWNSTREAM OF THE APPLIANCE REGULATOR.



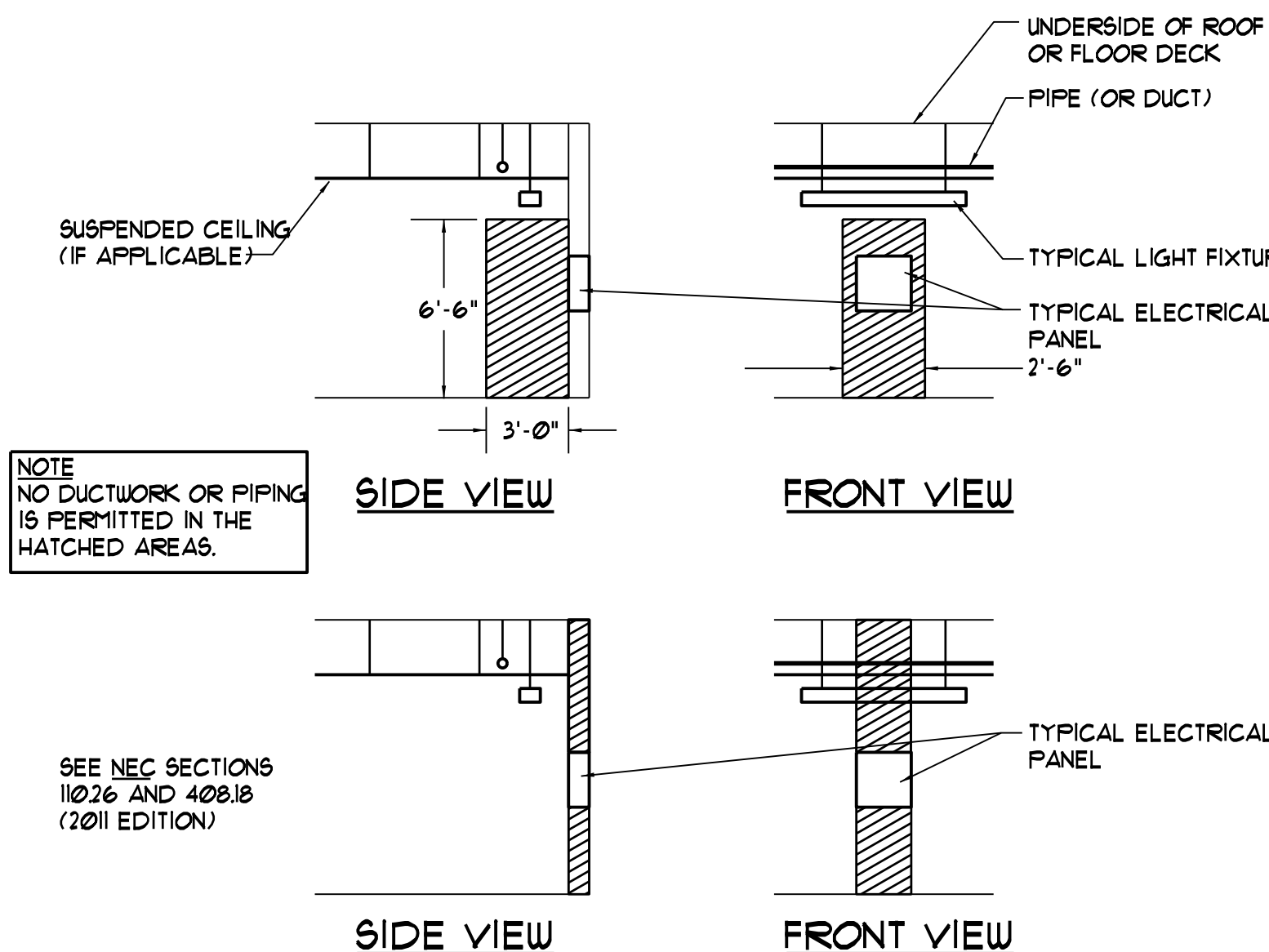
DOWNFEED GAS PIPING CONNECTION DETAIL

NOTE APPLIANCES WITH REGULATORS LOCATE PIPING SHOWN HEREIN UPSTREAM OF THE APPLIANCE REGULATOR. PROVIDE A TEST PLUG DOWNSTREAM OF THE APPLIANCE REGULATOR.



LOW PRESSURE DUCT CONSTRUCTION DETAILS - TYPICAL

NTS



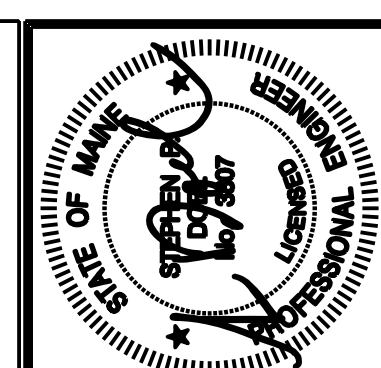
CLEARANCES AT ELECTRICAL PANELS

NTS

MECHANICAL AND PLUMBING SYMBOLS AND ABBREVIATIONS LEGEND

NOTE - USE SYMBOLS AND ABBREVIATIONS AS APPLICABLE FOR THIS MECHANICAL DRAWING SET. SOME SYMBOLS AND ABBREVIATIONS IN THIS LEGEND MAY NOT APPLY.

Legend table with columns for SYMBOL, DESCRIPTION, ABBREVIATION, and DESCRIPTION. It lists symbols for piping, valves, dampers, and various abbreviations for mechanical and plumbing components.



Prepared For:



Consultant:

ARCHETYPE

48 Union Wharf Portland, Maine 04101 (207) 772-6022 Fax (207) 772-4056

BRICK NORTH EAST WING

THOMPSON'S POINT, PORTLAND ME

ISSUED FOR CONSTRUCTION

Scale: 1/8" = 1'-0"

Date: 1-4-2016

M3.01