

Prepared For:



Consultant:

ARCHETYPE
48 Union Wharf Portland, Maine 04101
(207) 772-6022 Fax (207) 772-4056

Architect:

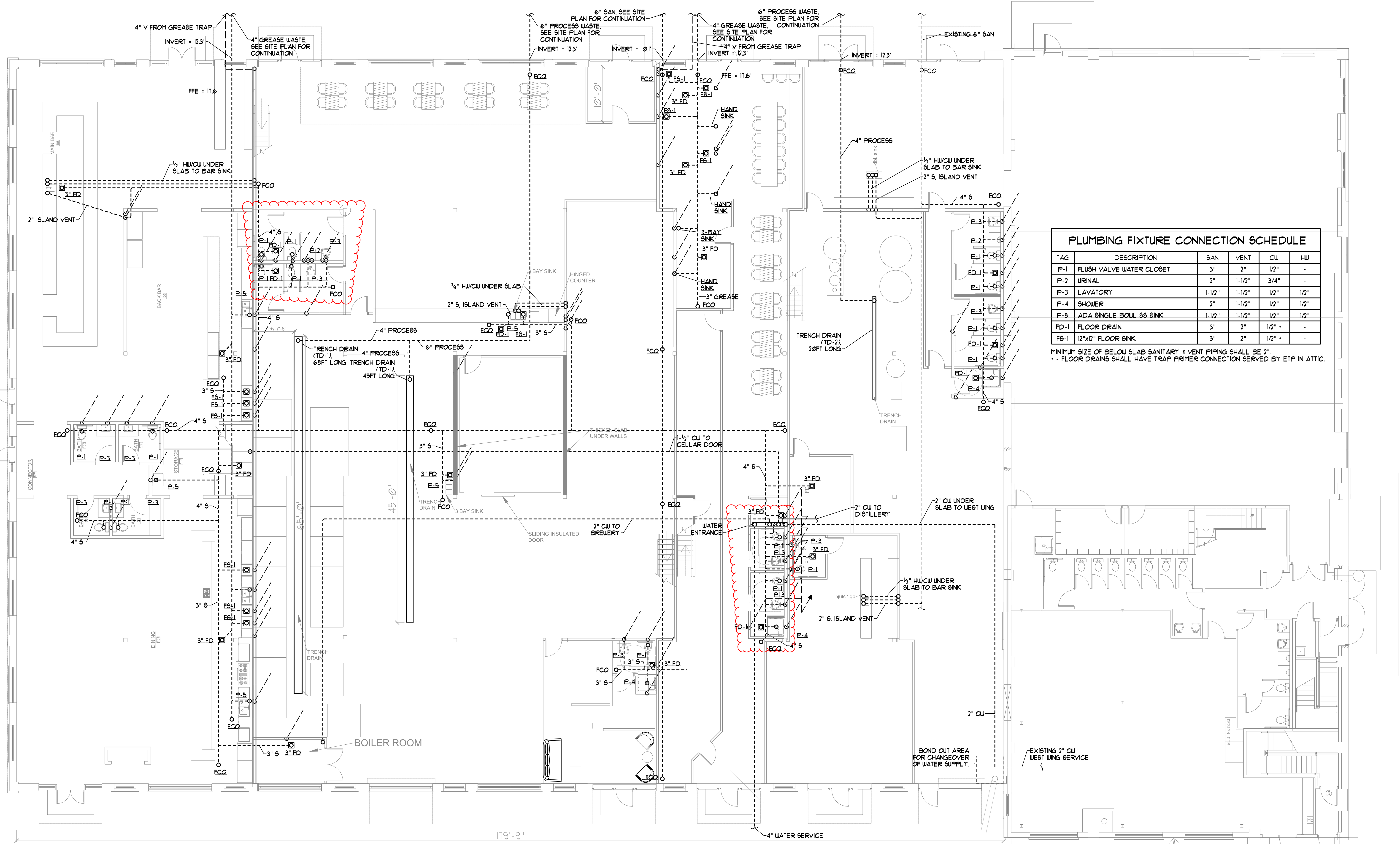
Project:
BRICK NORTH
EAST WING
THOMPSON'S POINT,
PORTLAND ME

Revisions:

Date: 11-30-15
Scale: 1/8" = 1'-0"

ISSUED FOR
CONSTRUCTION
UNDER SLAB PLUMBING
PLAN

M2.01



PLUMBING FIXTURE CONNECTION SCHEDULE

TAG	DESCRIPTION	SAN	VENT	CW	HW
P-1	FLUSH VALVE WATER CLOSET	3"	2"	1/2"	-
P-2	URINAL	2"	1-1/2"	3/4"	-
P-3	LAVATORY	1-1/2"	1-1/2"	1/2"	1/2"
P-4	SHOWER	2"	1-1/2"	1/2"	1/2"
P-5	ADA SINGLE BOWL SS SINK	1-1/2"	1-1/2"	1/2"	1/2"
FD-1	FLOOR DRAIN	3"	2"	1/2"	-
FS-1	12"x12" FLOOR SINK	3"	2"	1/2"	-

MINIMUM SIZE OF BELOW SLAB SANITARY & VENT PIPING SHALL BE 2".
FLOOR DRAINS SHALL HAVE TRAP PRIMER CONNECTION SERVED BY ETP IN ATTIC.

- PLUMBING SPECIFICATIONS**
- SANITARY (INCLUDING PROCESS WASTE) AND VENT PIPING SHALL BE SCHEDULE 40 PVC OR SERVICE WEIGHT CAST IRON. (VENT PIPING THROUGH ROOF SHALL BE CAST IRON ONLY)
 - DOMESTIC WATER PIPING UNDER SLAB SHALL BE CROSSLINKED PE-X.
 - FLOOR DRAINS SHALL INCLUDE TRAP PRIMER CONNECTION SERVED BY IN-LINE TRAP PRIMER INSTALLED ON NEAREST FIXTURE. TRAP PRIMER SHALL OPERATE ON A PRESSURE DROP OF 3-5 PSIG.
 - TRENCH DRAINS SHALL BE WATTS' DEAD LEVEL P 6" WIDE PRE-SLOPED TRENCH DRAINS WITH REINFORCED STAINLESS STEEL SLOTTED GRATES.

NOTE - FIELD VERIFY LOCATIONS OF EXISTING UTILITY LOCATIONS