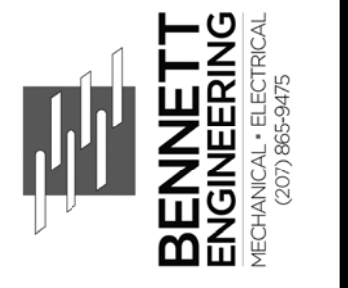


Prepared For:



Consultant:

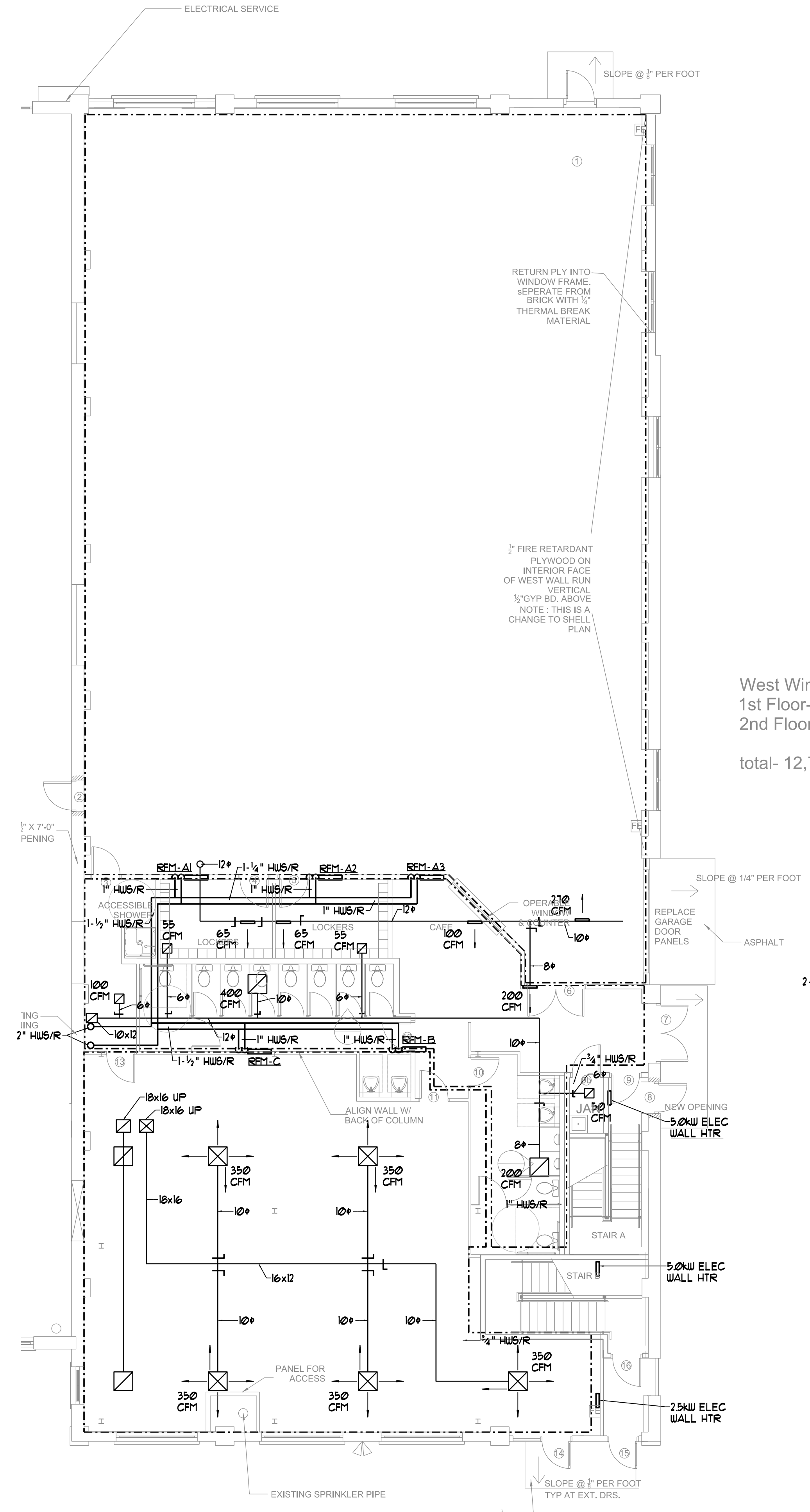
Architect: ARCHETYPE  
 48 Union Wharf Portland, Maine 04101  
 (207) 772-6022 Fax (207) 772-4056

Project: BRICK NORTH WEST WING  
 THOMPSON'S POINT, PORTLAND ME

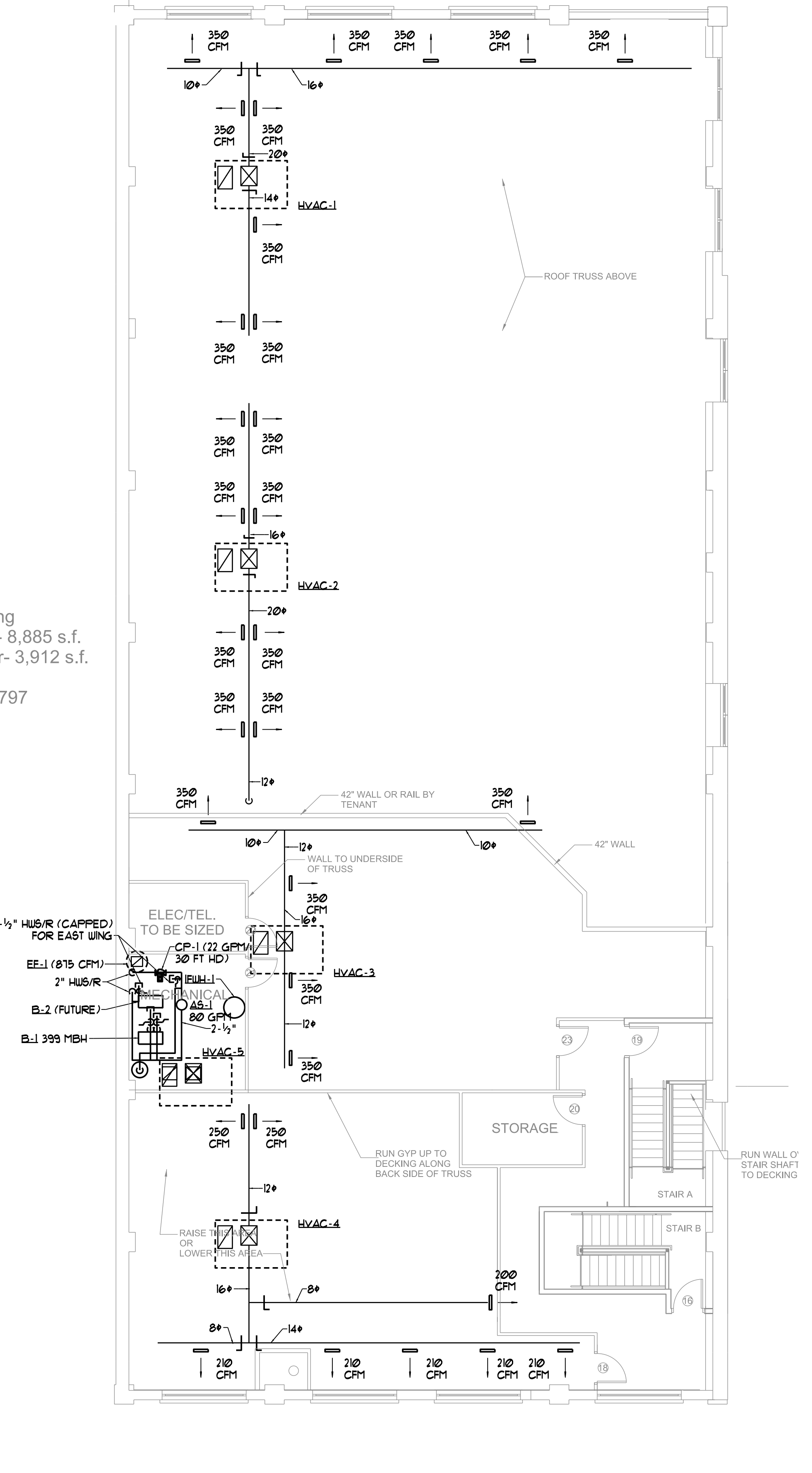
Revisions:  
 ISSUED FOR PERMIT

Date: 8-15-2014  
 Scale: 1/8" = 1'-0"

M1



FIRST FLOOR MECHANICAL PLAN  
 SCALE - 1/8" = 1'-0"



SECOND FLOOR MECHANICAL PLAN  
 SCALE - 1/8" = 1'-0"