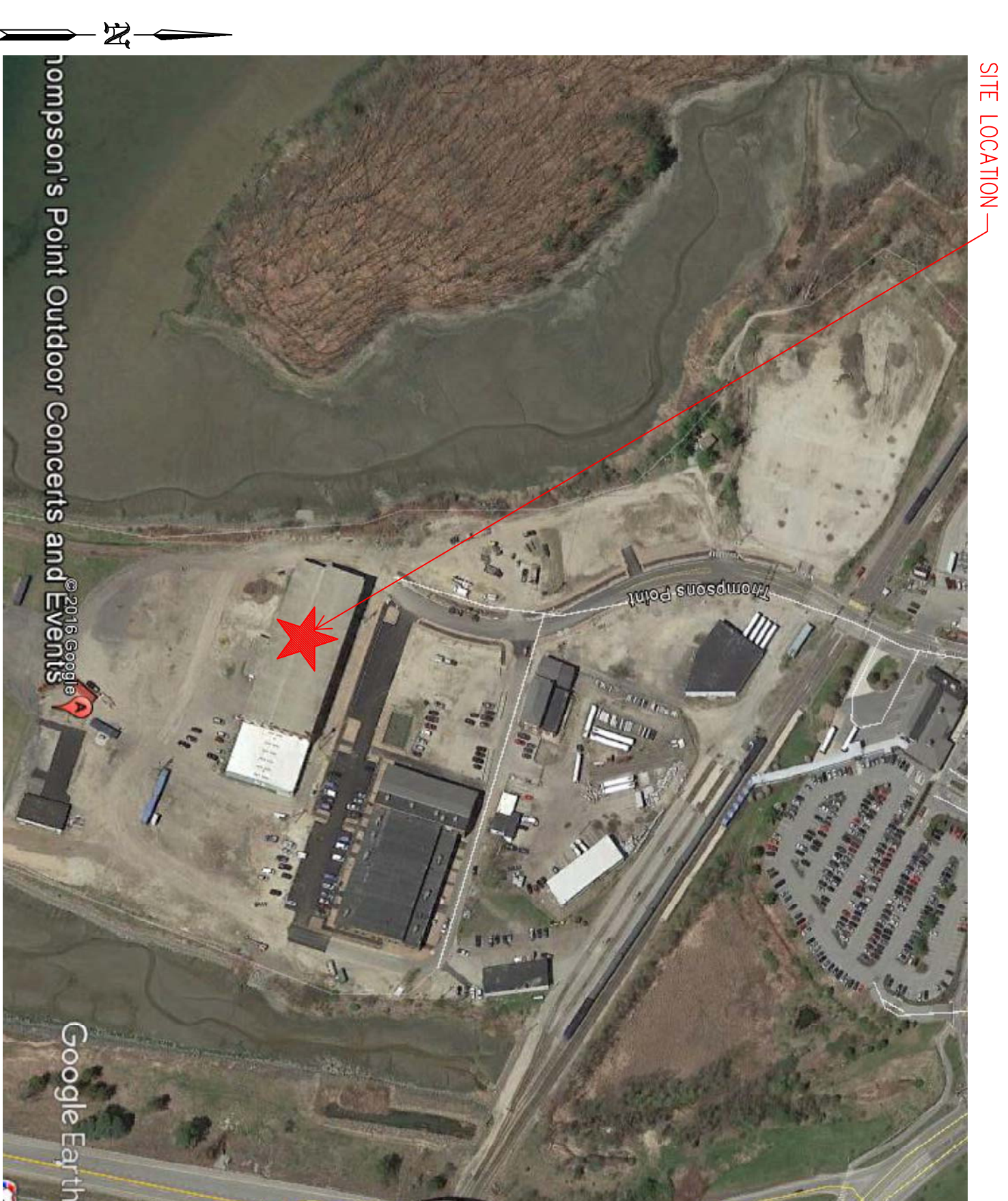
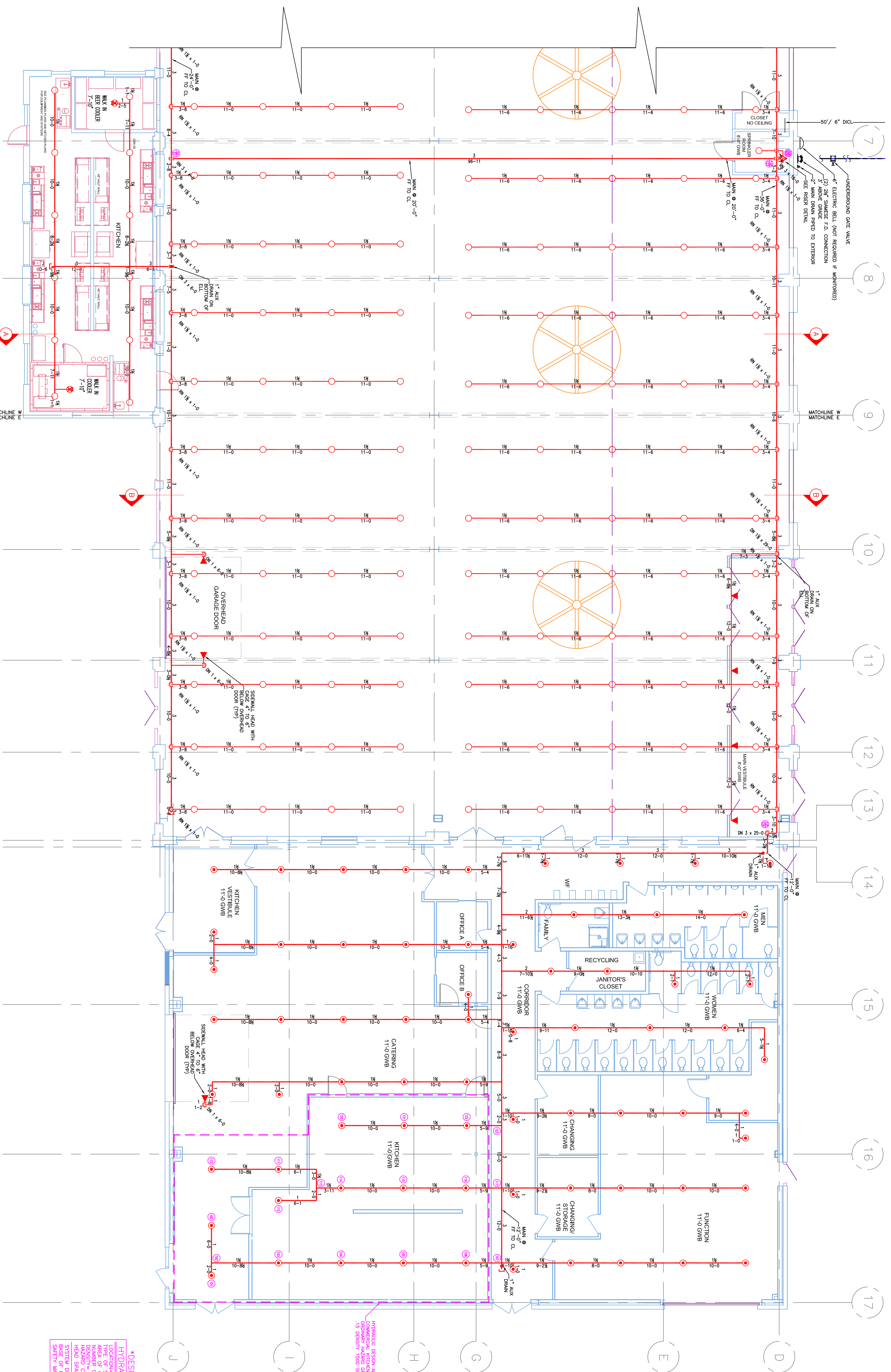


2.1 EAST SECTION 'B'
SCALE 1/8" = 1'-0"

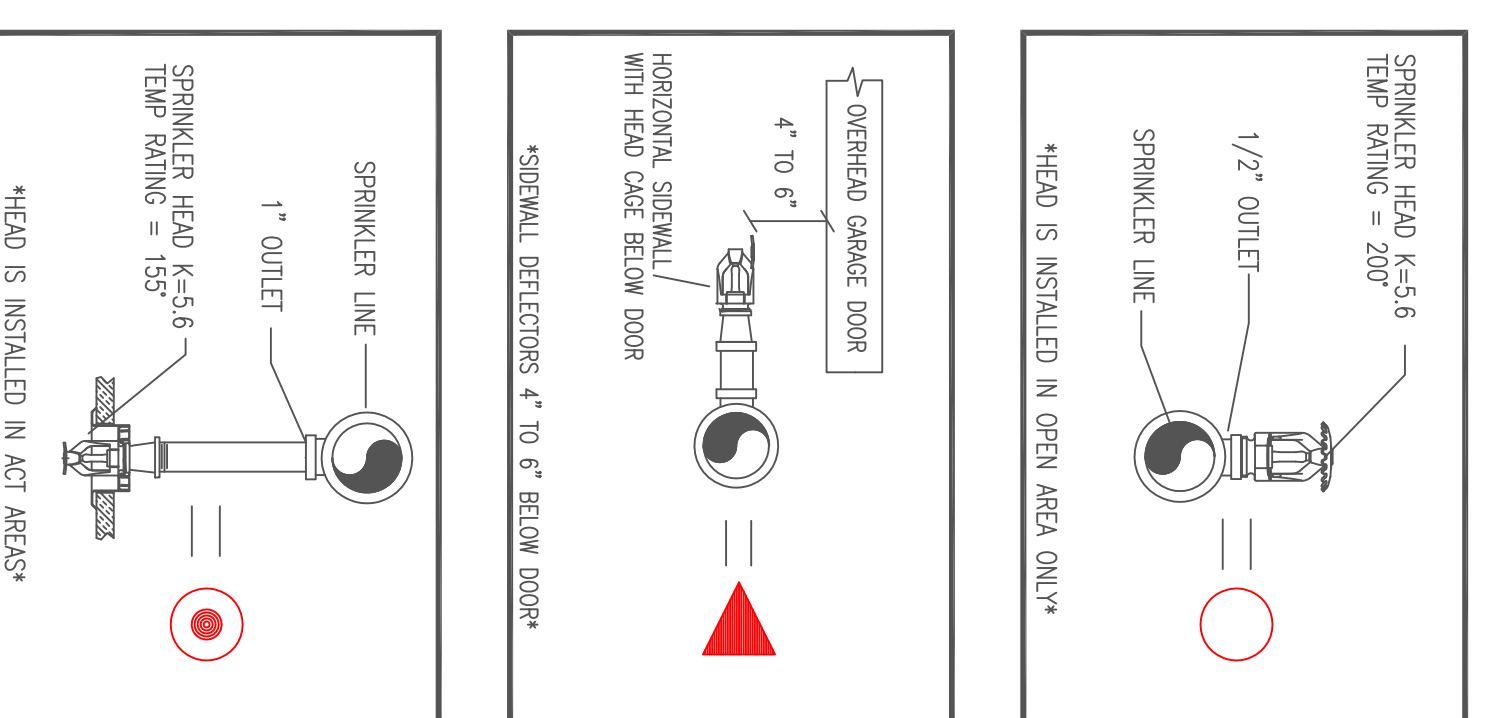


2.3 PLOT PLAN
SCALE: N.T.S.



2 EAST SECTION (WE1)
TOTAL PROTECTED AREA 14,500 SQ.FT.
SCALE 1/8" = 1'-0"

APPROX. AREA NUMBER 2
 ILLUSTRATING DESIGN CRITERIA:
 TYPE OF SYSTEM: WET
 NUMBER OF SPRINKLERS: 113
 HEADS CLASS: STANDARD
 SYSTEM DESIGN INCLUDING HOSE:
 BASE OR RISE: 48'-0" PM 71-1-P3
 DATE: 11/16/17



2.2 SPRINKLER HEAD DETAIL
SCALE: N.T.S.

HIGH TECH
 FIRE PROTECTION
 P.O. BOX 156
 MANOY, ME 04258-0156
 TEL (207) 998-2551 FAX (207) 998-4871
 CELL (207) 489-5527

GENERAL CONTRACTOR ON RECORD:
 LAUREY FRENCH CONSTRUCTION
 P.M.: NICK DUNOAN (207) 730-5566
 CELL (207) 489-5527

SPECIAL APPLICATIONS:

LEGEND:
 ○ RISE/PIPE RISEN UP OR DOWN
 △ PROPOSED PLUMB
 ▽ SYSTEM RISER
 — PIPE PITCH & MAINS 1/2" LINES
 + SWAY BRACING
 ⊙ HYDRAULIC CALC. POINT

DESIGN & SYSTEM NOTES:
 1. REFER TO ALL SCHEDULES FOR THE SCHEDULE TO WHICH EACH ITEM IS REFERRED.
 2. ALL PIPING 1 1/2" & SMALLER TO BE SCHEDULE 40 WITH APPROPRIATE FINISHING AND USE OF SPRINKLER HEADS SHALL BE IN ACCORDANCE WITH NFPA 13.
 3. POSITION, LOCATION, SPACING AND USE OF HANGERS SHALL BE IN ACCORDANCE WITH NFPA 13. IF BEEN DONE IN ACCORDANCE WITH NFPA 13, SET PLANS SHALL BE SUBMITTED TO THE AIA FOR REVIEW AND APPROVAL.
 4. HIGH TECH FIRE PROTECTION IS TO BEGIN WORK AT 6' MAIN 1" AFF NISBE OF BUILDING.
 5. DIMENSIONS AND LOCATIONS GIVEN FOR SPRINKLER HEADS SHALL BE TO THE CENTER OF THE HEAD.
 6. OWNER IS RESPONSIBLE TO MAINTAIN THE SPRINKLER SYSTEM IN ACCORDANCE WITH NFPA 13. SET PLANS OF WATER-BASED FIRE PROTECTION SYSTEMS AND/ OR LINES, COSES AND BRANCHES, WET AND/OR LOCAL TRUCKS TO COORDINATE THEIR WORK WITH SPRINKLER CONTRACTOR.
 7. ALL MECHANICAL, ELECTRICAL AND PLUMBING WORK IS TO BE DONE BY OTHERS.
 8. ELECTRICAL WORK IS TO BE DONE BY OTHERS.

HEAD LEGEND:
 ○ Q-0001*
 MODEL 02.5611
 (70/1155)
 K-4.5.6
 1/2" BRASS HORIZONTAL SPECIAL SEALS ACCESSIBLE EXP. BELOW OVERHEAD DOOR
 △ Q-0002*
 MODEL 02.5626
 (70/1155)
 K-4.5.6
 1/2" BRASS UPRIGHT DEFLECTORS IN OPEN AREA ONLY
 ○ Q-0003*
 MODEL 02.5620
 (70/1155)
 K-4.5.6
 1/2" WHITE BRONZE SEMI-RECESSED ESC

Q-0004*
 MODEL 02.5601
 (70/1155)
 K-4.5.6
 1/2" WHITE BRONZE SEMI-RECESSED ESC

OR APPROVED EQUAL
 TOTAL HEADS ON THIS SHEET: 140
 SCALE: 1/8" = 1'-0"

REVISIONS:
 NO. DATE DESCRIPTION:
 1 1/16/17 NO STEEL PROTECTION
 DATE: DECEMBER 30, 2016
 DESIGNER: ED DOLAN (MSA 515)
 CHECKED BY: AJ FOSS

LOCATION:
 THOMPSONS POINT
 PORTLAND, ME

DRAWING TITLE:
 BRICK SOUTH
 AT THOMPSONS POINT
 (MATCHLINE-E)
 FIRE PROTECTION PLAN
 (NFPA 13 2016ed.)

DRAWING NO.:
 FP-02 REVISED