

LEGEND:

- MAIN PIPE RISEN UP OR DOWN
- PROPOSED MAIN
- PROPOSED PIPE
- SYSTEM RISER
- PIPE PITCH & MANS J LINES
- SWAY BRACING
- HYDRAULIC CALC. POINT

DESIGN & SYSTEM NOTES:  
 WITH APPROVED CALC. POINT SCHEDULE TO ALL PIPING 1 1/2" & SMALLER TO BE SCHEDULE 40 WITH APPROPRIATE FINISHING AND USE OF SPRINKLER SUPPORTS AS SHOWN.  
 POSITION, LOCATION, SPACING AND USE OF HANGERS SHALL BE IN ACCORDANCE WITH NFPA 13. HANGERS SHALL BE INSTALLED IN ACCORDANCE WITH NFPA 13. SET PLANS SHALL BE IN ACCORDANCE WITH NFPA 13. SET PLANS SHALL BE IN ACCORDANCE WITH NFPA 13. SET PLANS SHALL BE IN ACCORDANCE WITH NFPA 13.  
 HIGH TEB FIRE PROTECTION IS TO BE ON WORK AT 6" MAIN 7" AFF NEAR OF BUILDING.  
 DIMENSIONS AND LOCATIONS SHOWN FOR SPRINKLER ACTUAL FIELD CONDITIONS TO ACCOMMODATE OWNERS TO PROVIDE ADEQUATE HEAT THROUGHOUT BUILDING TO PROTECT WATER FILLED PIPING AND EQUIPMENT FROM FREEZING TEMPERATURES.  
 OWNER IS RESPONSIBLE TO MAINTAIN THE SPRINKLER OF NFPA 13. INSPECTION TESTING, MAINTENANCE OF WATER-BASED FIRE PROTECTION SYSTEMS AND/ OR LINES, CORES AND BRANCHES, AND/OR LOCAL OWNERS TO MAINTAIN THE SYSTEM.  
 ALL MECHANICAL, ELECTRICAL AND PLUMBING TRADES TO COORDINATE THEIR WORK WITH SPRINKLER CONTRACTOR.  
 ALL ELECTRICAL WORK IS TO BE DONE BY OTHERS.  
 HEAD LEGEND:

MODEL QLOEET  
K-5.6  
1/2" BRASS UPRIGHT DEFLECTOR 4" TO 6" BELOW COMBUSTIBLE CEILING

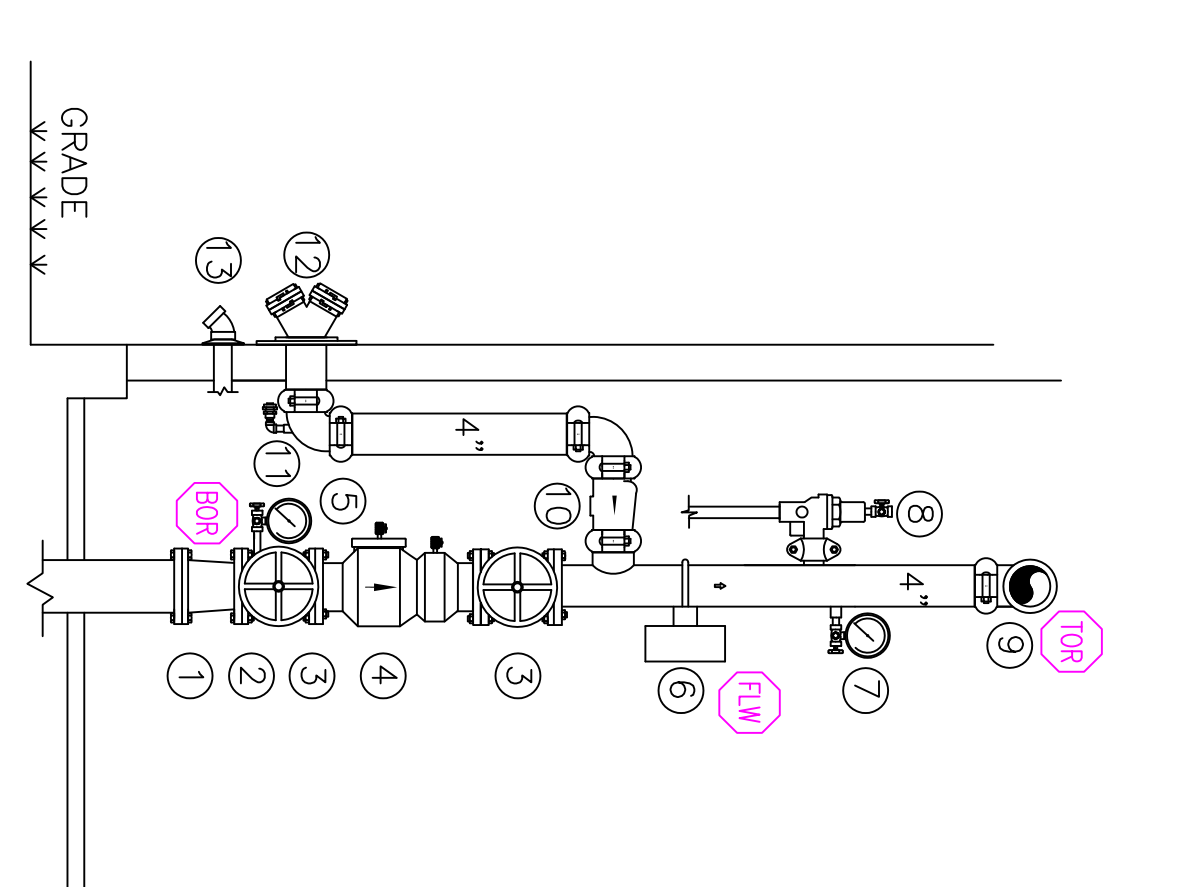
MODEL QLOEET  
K-5.6  
1/2" BRASS HORIZONTAL SIDEWALL DEFLECTOR 4" TO 6" BELOW OVERHEAD DOOR

MODEL QLOEET  
K-5.6  
1" DRY PENDENT CHROME IN COOLERS ZPO DEEP ESC.

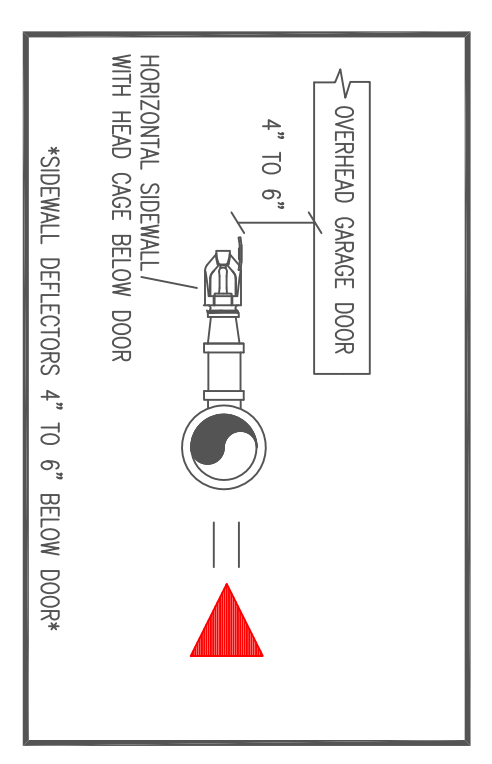
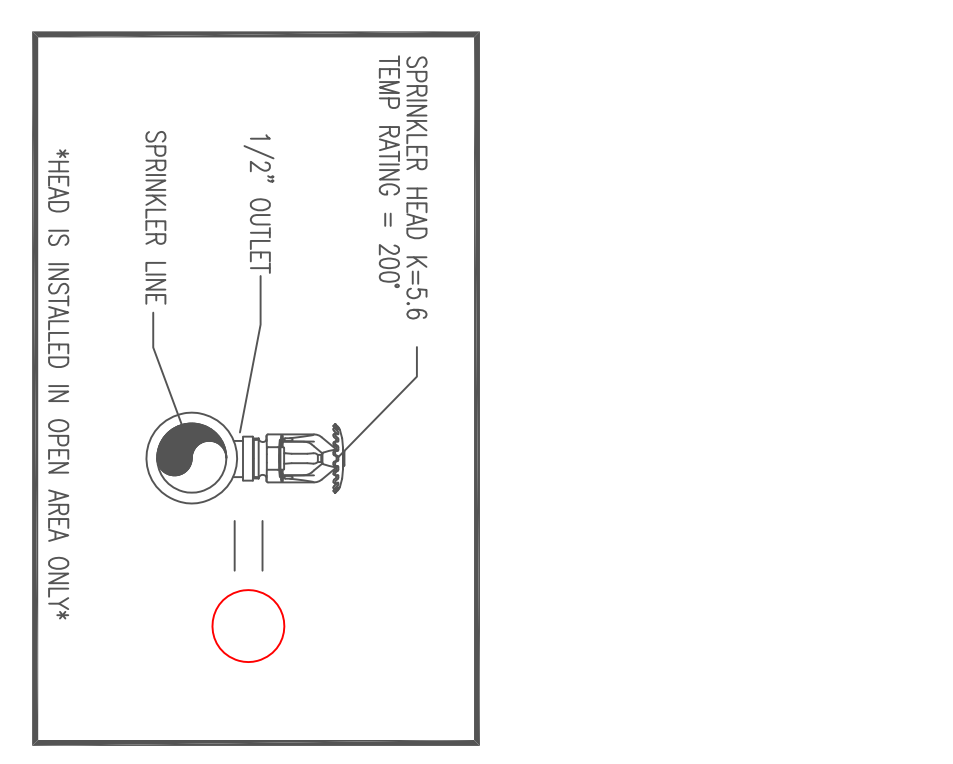
\*OR APPROVED EQUAL\*  
 TOTAL HEADS ON THIS SHEET: 161  
 SCALE: 1/8" = 1'-0"  
 REVISIONS:  
 NO. DATE DESCRIPTION:  
 1 1/16/17 NO STEEL PROTECTION  
 DATE: DECEMBER 30, 2016  
 DESIGNER: ED BOWEN (MS# 515)  
 CHECKED BY: AL FOSS  
 LOCATION:  
 THOMPSONS POINT  
 PORTLAND, ME  
 DRAWING TITLE:  
 BRICK SOUTH  
 AT THOMPSONS POINT  
 (MATCHLINE-W)  
 FIRE PROTECTION PLAN  
 (NFPA 13 2016ed.)  
 DRAWING NO.:  
 FP-01 REVISED

**SPRINKLER RISER COMPONENTS**

1. 6" DI. UNDERGROUND RISER TO GATE VALVE
2. 4" GATE VALVE WITH POTTER GOSWILL-TAMPER SWITCH
3. 4" WALKING SMOKE BACKFLOW PREVENTER
4. 4" WALKING SMOKE BACKFLOW PREVENTER
5. 4" WALKING SMOKE BACKFLOW PREVENTER
6. 4" WALKING SMOKE BACKFLOW PREVENTER
7. SYSTEM SIDE PRESSURE GAUGE
8. 4" WALKING SMOKE BACKFLOW PREVENTER
9. 4" WALKING SMOKE BACKFLOW PREVENTER
10. 4" SWING CHECK VALVE FOR F.D.C. FEED 48" MINIMUM FROM EXTERIOR
11. 1/2" AUTOMATIC BALL VALVE - ABOVE GRADE (SEE PLAN FOR LOCATION)
12. 2" MAIN DRAIN DISCHARGE TO EXTERIOR (SEE PLAN FOR LOCATION)



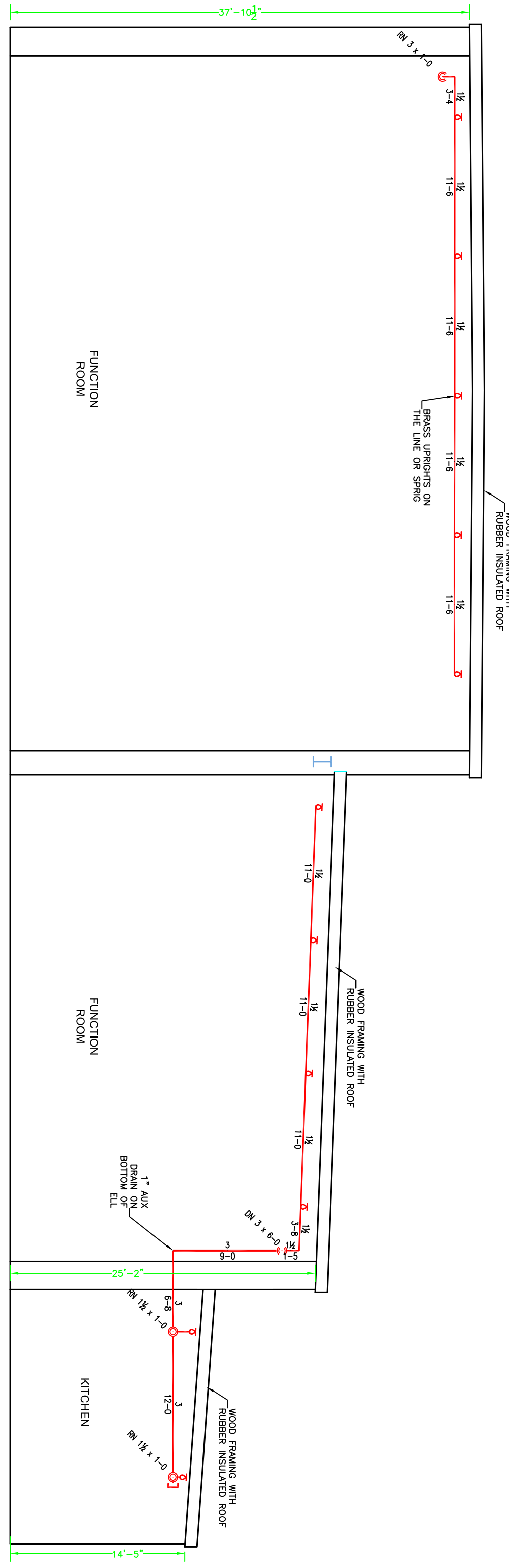
**1.3 RISER DETAIL**  
SCALE: N.T.S.



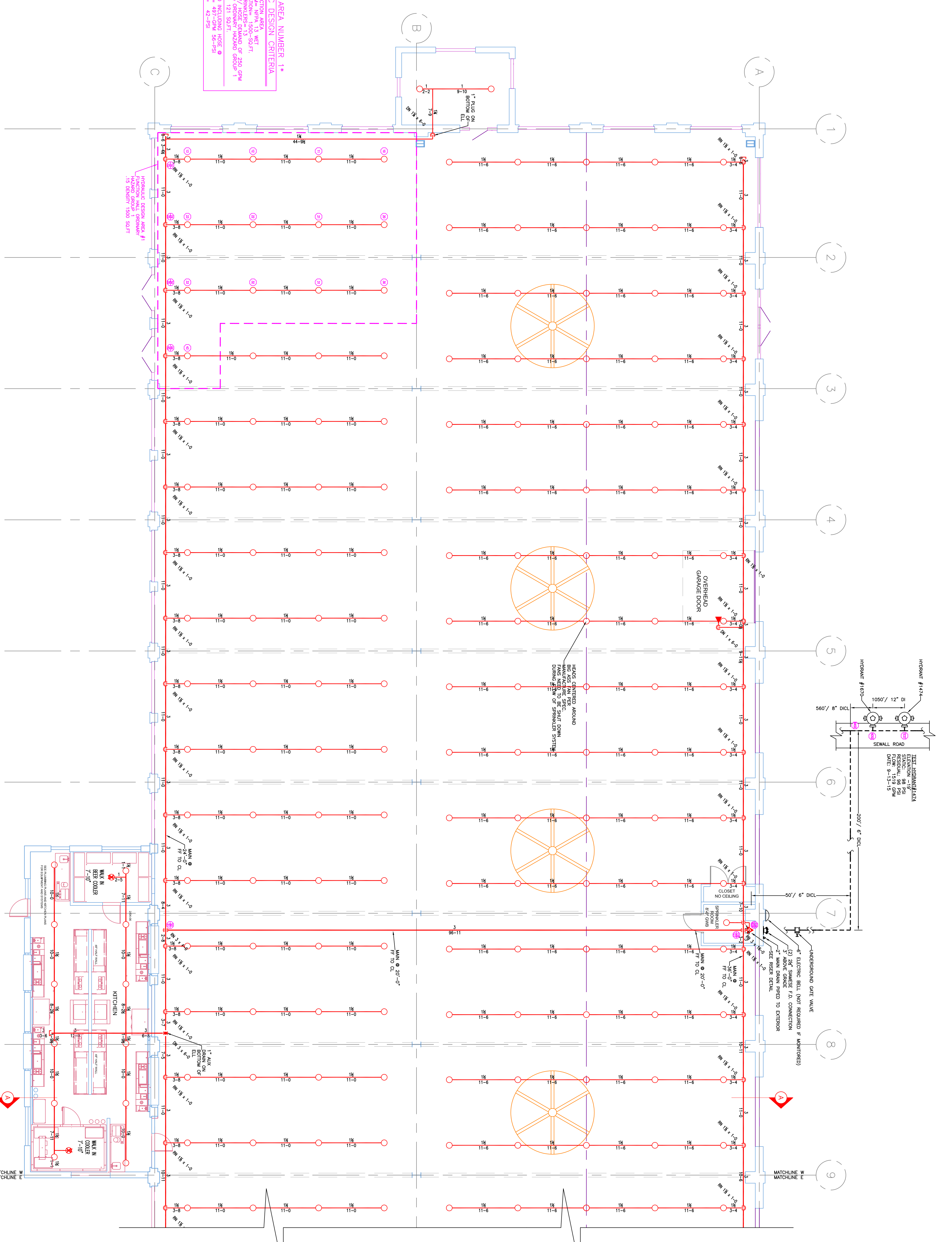
**1.2 SPRINKLER HEAD DETAIL**  
SCALE: N.T.S.

**PROJECT DESCRIPTION**  
 THE BUILDING IS 1 LEVEL OF NEW ASSEMBLY OCCUPANCY CONSTRUCTED OF WOOD-STEEL-BRICK FRAMING, FIBERGLASS INSULATION, AND GYP BOARD TYPE 3 CONSTRUCTION.  
 STEEL SPRINKLER PIPING AS SHOWN ON PLAN.  
 BUILDING OCCUPANCY:  
 THE BUILDING IS A CHANGE OF USE TO NEW ASSEMBLY OCCUPANCY AS SHOWN.  
 SPRINKLER SYSTEM DESIGN:  
 NEW WET SYSTEM FOR THE ENTIRE BUILDING IN ACCORDANCE WITH NFPA 13 2016ed.  
 THE BUILDING USE GROUP IS ORDINARY HAZARD GROUP 1. GC TO PROPERLY INSULATE AROUND SPRINKLER PIPING TO PREVENT WATER FILLED PIPE FROM FREEZING.  
 THE SPRINKLER SYSTEM IS DESIGNED TO MEET APPLICABLE CODE REGARDING AN NFPA 13 2016ed.

**HYDRONIC AREA DESIGN CRITERIA**  
 TYPE OF SYSTEM: WET  
 NUMBER OF STORIES: 1  
 NUMBER OF SPRINKLER HEADS: 161  
 HYDRONIC CLASS: ORDINARY HAZARD GROUP 1  
 CODE: NFPA 13 2016ed.  
 DATE OF DESIGN: 12/30/16  
 DATE OF REVISION: 01/16/17  
 DRAWN BY: AL FOSS



**1.1 WEST SECTION 'A'**  
SCALE: 1/8" = 1'-0"



**1 WEST SECTION (WET)**  
TOTAL PROTECTED AREA 19,200 SQ.FT.  
SCALE: 1/8" = 1'-0"