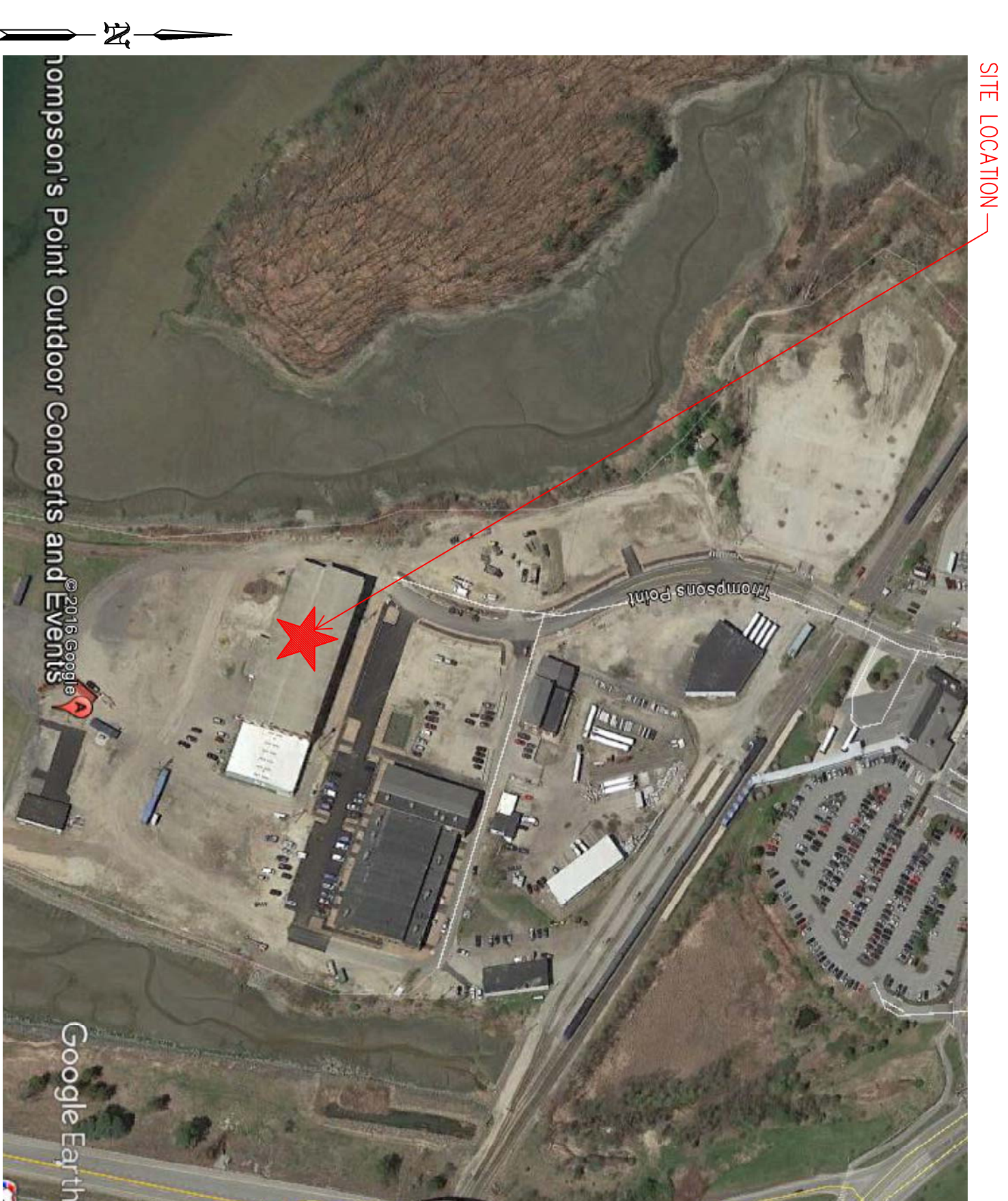
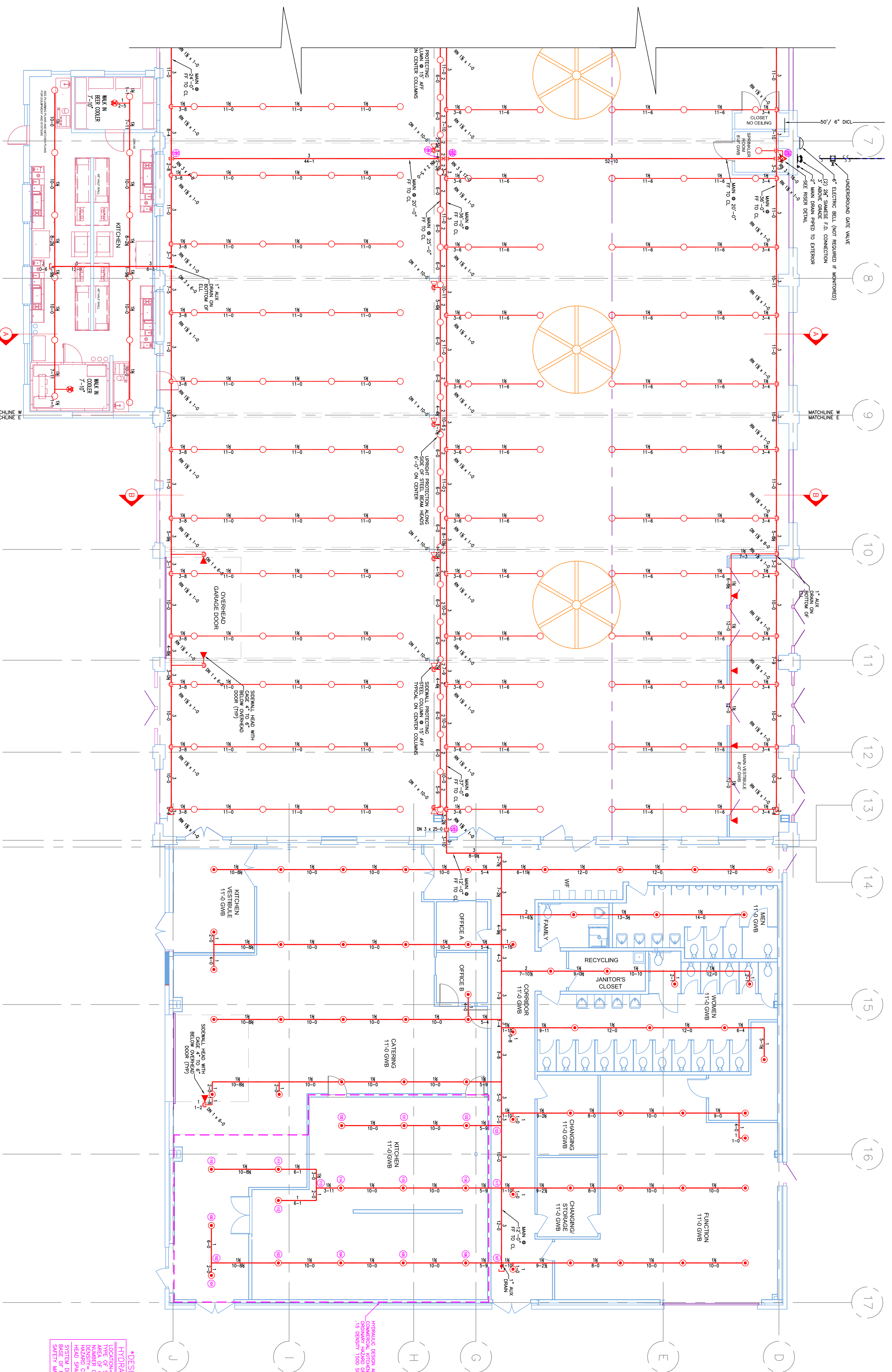


2.1 EAST SECTION 'B'  
SCALE 1/8" = 1'-0"

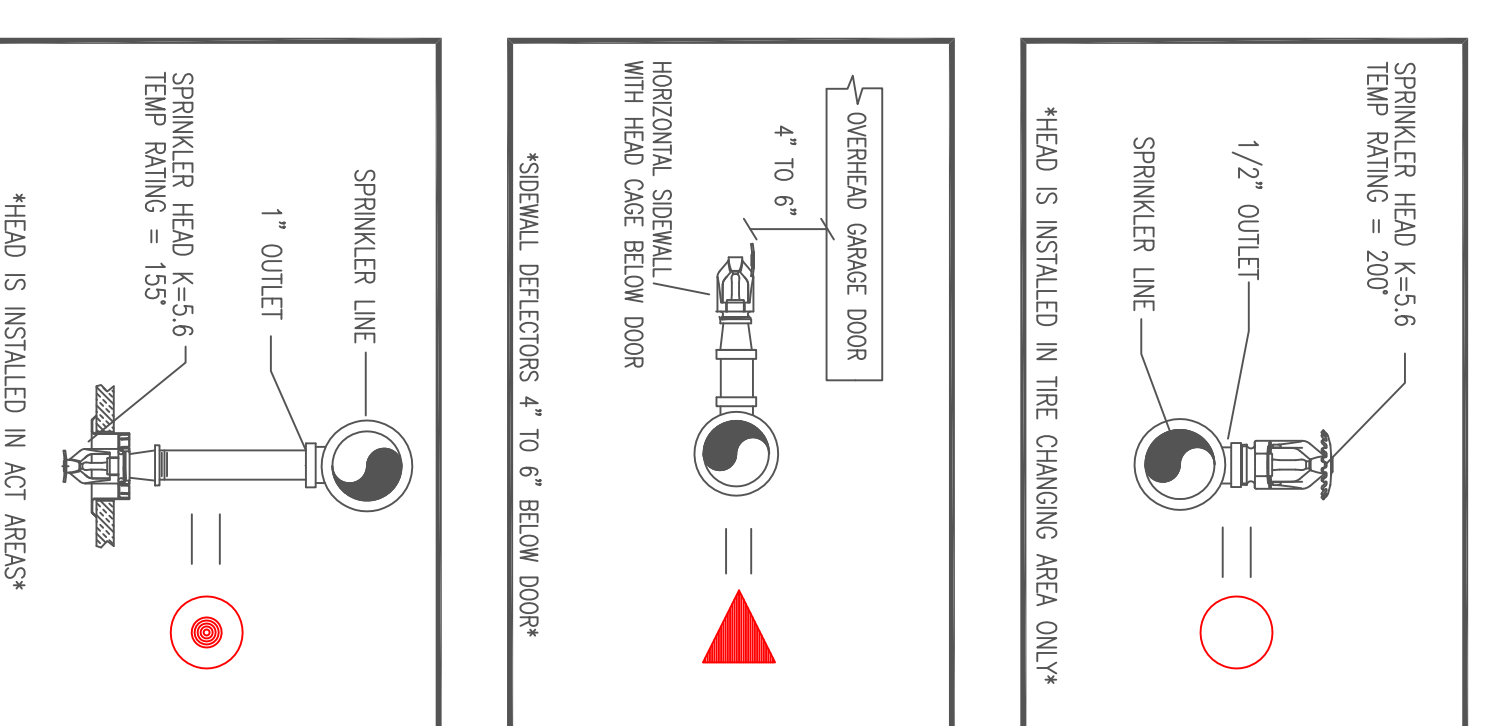


2.3 PLOT PLAN  
SCALE: N.T.S.



2 EAST SECTION (WE1)  
TOTAL PROTECTED AREA 14,500 SQ.FT.  
SCALE 1/8" = 1'-0"

\*APPROX. AREA NUMBER 2\*  
FOLLOWING DESIGN CRITERIA:  
TYPE OF SYSTEM - WET  
RATED TEMPERATURE - 155°F  
NUMBER OF SPRINKLERS - 115  
HEADS CLASS - STANDARD  
SYSTEM DESIGN INCLUDING HOSE  
BASE ON AREA - 48-52PM 74-1P3  
BASE ON AREA - 48-52PM 74-1P3



2.2 SPRINKLER HEAD DETAIL  
SCALE: N.T.S.

- LEGEND:
- NEW PIPE RISEN UP OR DOWN
  - NEW PIPE RISEN UP OR DOWN
  - PROPOSED PIPE
  - SYSTEM RISER
  - PIPE PITCH & MANS J LINES
  - SWAY BRACING
  - HYDRAULIC CALC. POINT

DESIGN & SYSTEM NOTES:

1. ALL WORK SHALL BE IN ACCORDANCE WITH THE SCHEDULE TO THE CONTRACT DOCUMENTS AND THE SPECIFICATIONS TO THE CONTRACT DOCUMENTS.  
2. ALL PRICES 1 1/2" & SMALLER TO BE SCHEDULE 40 WITH APPROPRIATE FINISHING AND USE OF SPRINKLER HEADS SHALL BE IN ACCORDANCE WITH NFPA 13.  
3. POSITION, LOCATION, SPACING AND USE OF HANGERS SHALL BE IN ACCORDANCE WITH NFPA 13. ALL HANGERS SHALL BE IN ACCORDANCE WITH NFPA 13. ALL HANGERS SHALL BE IN ACCORDANCE WITH NFPA 13. ALL HANGERS SHALL BE IN ACCORDANCE WITH NFPA 13.  
4. ALL WORK SHALL BE IN ACCORDANCE WITH NFPA 13. ALL WORK SHALL BE IN ACCORDANCE WITH NFPA 13. ALL WORK SHALL BE IN ACCORDANCE WITH NFPA 13.  
5. ALL WORK SHALL BE IN ACCORDANCE WITH NFPA 13. ALL WORK SHALL BE IN ACCORDANCE WITH NFPA 13. ALL WORK SHALL BE IN ACCORDANCE WITH NFPA 13.  
6. ALL WORK SHALL BE IN ACCORDANCE WITH NFPA 13. ALL WORK SHALL BE IN ACCORDANCE WITH NFPA 13. ALL WORK SHALL BE IN ACCORDANCE WITH NFPA 13.  
7. ALL WORK SHALL BE IN ACCORDANCE WITH NFPA 13. ALL WORK SHALL BE IN ACCORDANCE WITH NFPA 13. ALL WORK SHALL BE IN ACCORDANCE WITH NFPA 13.  
8. ALL WORK SHALL BE IN ACCORDANCE WITH NFPA 13. ALL WORK SHALL BE IN ACCORDANCE WITH NFPA 13. ALL WORK SHALL BE IN ACCORDANCE WITH NFPA 13.  
9. ALL WORK SHALL BE IN ACCORDANCE WITH NFPA 13. ALL WORK SHALL BE IN ACCORDANCE WITH NFPA 13. ALL WORK SHALL BE IN ACCORDANCE WITH NFPA 13.  
10. ALL WORK SHALL BE IN ACCORDANCE WITH NFPA 13. ALL WORK SHALL BE IN ACCORDANCE WITH NFPA 13. ALL WORK SHALL BE IN ACCORDANCE WITH NFPA 13.

HEAD LEGEND:

- GLOBE\*  
MODEL GL5615  
K-5.6  
1/2" BRASS UPRIGHT  
DEFLECTOR ON THE LINE  
COMBUSTIBLE CEILINGS
- GLOBE\*  
MODEL GL5626  
K-5.6  
1/2" BRASS HORIZONTAL  
SIDEWALL SEMI RECESSED OR EYE  
BELOW OVERHEAD DOOR
- GLOBE\*  
MODEL GL5601  
K-5.6  
1/2" WHITE PENDENT  
SEMI-RECESSED ESC.

\*OR APPROVED EQUAL\*

TOTAL HEADS ON THIS SHEET: 156

SCALE: 1/8" = 1'-0"

REVISIONS:  
NO. DATE DESCRIPTION:

DATE: DECEMBER 30, 2016  
DESIGNER: ED DUNOAN (MSJ 515)  
CHECKED BY: AL FOSS

LOCATION:  
THOMPSONS POINT  
PORTLAND, ME

DRAWING TITLE:  
BRICK SOUTH  
AT THOMPSONS POINT  
(MATCHLINE-E)  
FIRE PROTECTION PLAN  
(NFPA 13 2016ed.)

DRAWING NO.:  
FP-02