

HOOD INFORMATION - Job#2111243

HOOD NO.	TAG	MODEL	LENGTH	MAX. COOKING TEMP.	EXHAUST PLENUM RISER(S)					TOTAL SUPPLY CFM	HOOD CONSTRUCTION	HOOD CONFIG.		
					TOTAL EXH. CFM	WIDTH	LENG.	DIA.	CFM			S.P.	END TO END	ROW
1	KH-1	5424 ND-2-PSP-F	13' 4.00'	600 Deg.	2466	14'	16'		2466	-0.482'	2333	304 SS Where Exposed	ALONE	ALONE

HOOD INFORMATION

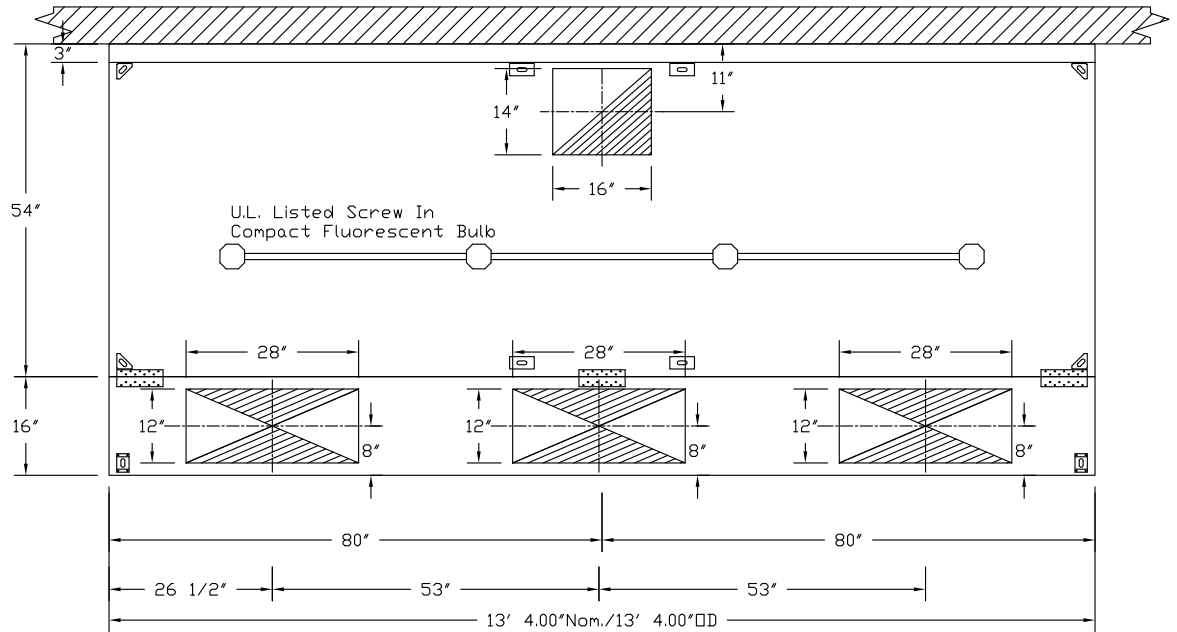
HOOD NO.	TAG	TYPE	FILTER(S)			EFFICIENCY @ 9 MICRONS	QTY.	LIGHT(S)			UTILITY CABINET(S)				FIRE SYSTEM PIPING	HOOD HANGING WGHT
			QTY.	HEIGHT	LENGTH			TYPE	WIRE GUARD	LOCATION	FIRE SYSTEM		ELECTRICAL	SWITCHES		
				TYPE	SIZE	MODEL #			QUANTITY							
1	KH-1	SS Baffle with Handles	10	16"	16"	30%	4	Screw In Compact	NO						NO	814 LBS

HOOD OPTIONS

HOOD NO.	TAG	OPTION
1	KH-1	FIELD WRAPPER 18.00' High Front, Left, Right
		RIGHT QUARTER END PANEL 23' Top Width, 0' Bottom Width, 23' High 304 SS
		LEFT QUARTER END PANEL 23' Top Width, 0' Bottom Width, 23' High 304 SS
		ELEC COLD AIR BACKDRAFT DAMPRS
		MIN 18 GAUGE HOOD

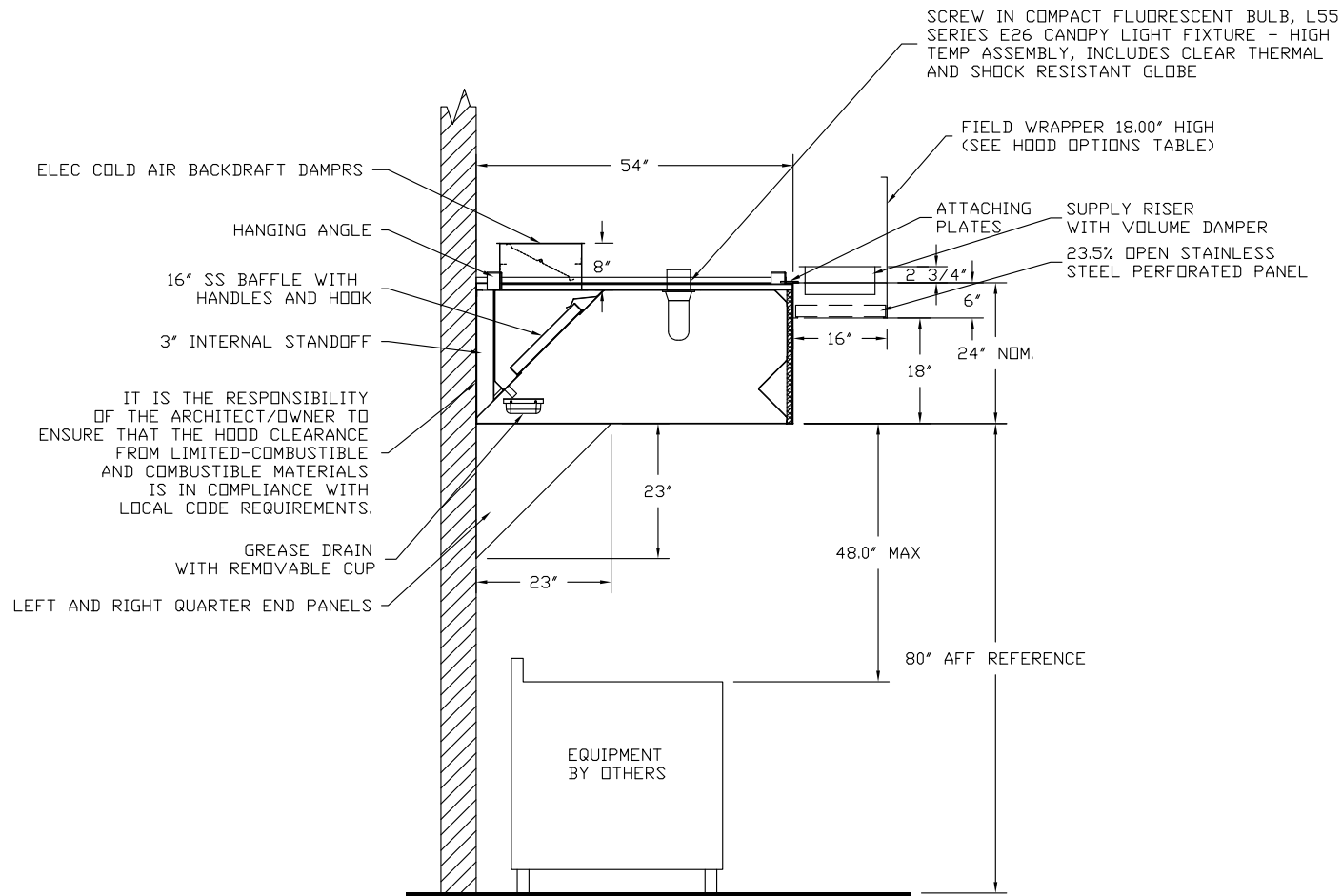
PERFORATED SUPPLY PLENUM(S)

HOOD NO.	TAG	POS.	LENGTH	WIDTH	HEIGHT	TYPE	RISER(S)				
							WIDTH	LENG.	DIA.	CFM	S.P.
1	KH-1	Front	160'	16'	6'	MUA	12'	28"		777	0.225'
						MUA	12'	28"		777	0.225'
						MUA	12'	28"		777	0.225'



PLAN VIEW - Hood #1 (KH-1)
 13' 4.00" LONG 5424ND-2-PSP-F-100MC
 NOTE: Additional hanging angles provided for hoods 12' and longer.

	CAPTIVEAIRE		JOB Mast Landing		
			LOCATION DOVER, NH, 03820		
			DATE 2/1/2016	JOB # 2111243	
			DWG # 1	DRAWN BY	



SECTION VIEW - MODEL 5424ND-2-PSP-F-100MC
HOOD - #1 (KH-1)



CAPTIVEAIRE

JOB Mast Landing	
LOCATION DOVER, NH, 03820	
DATE 2/1/2016	JOB # 2111243
DWG # 2	DRAWN BY