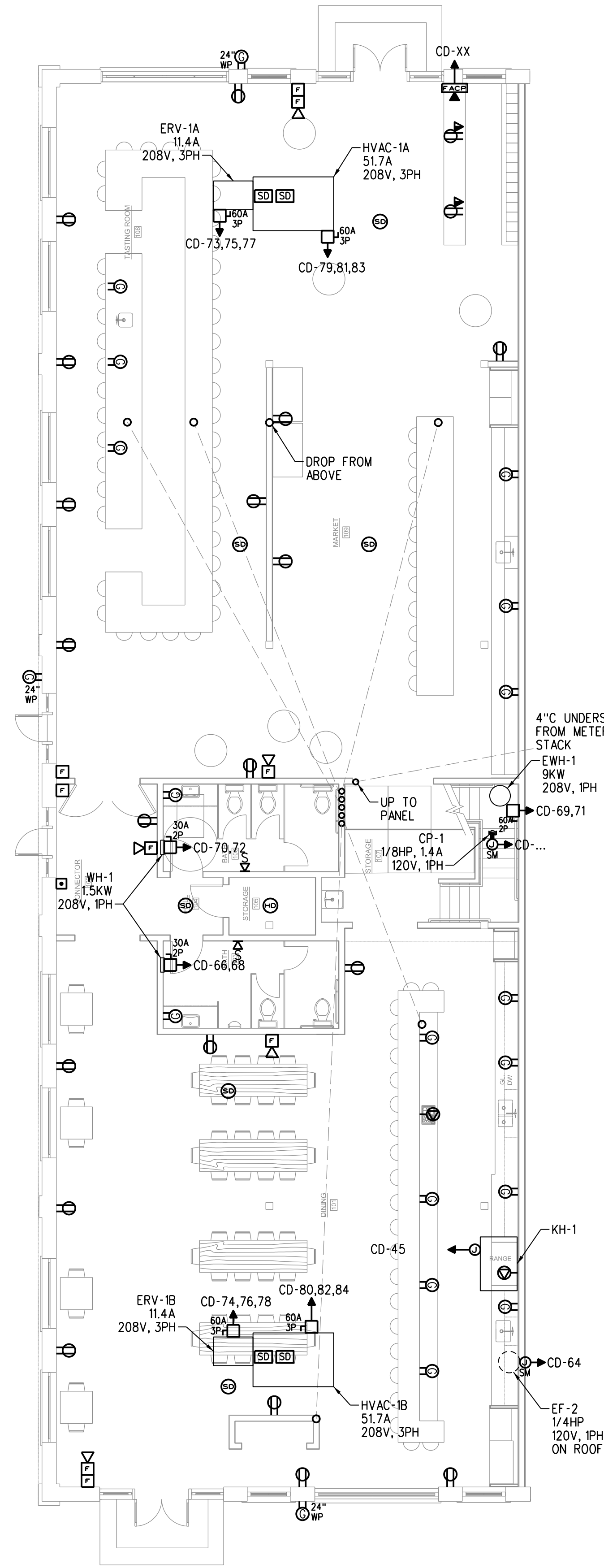
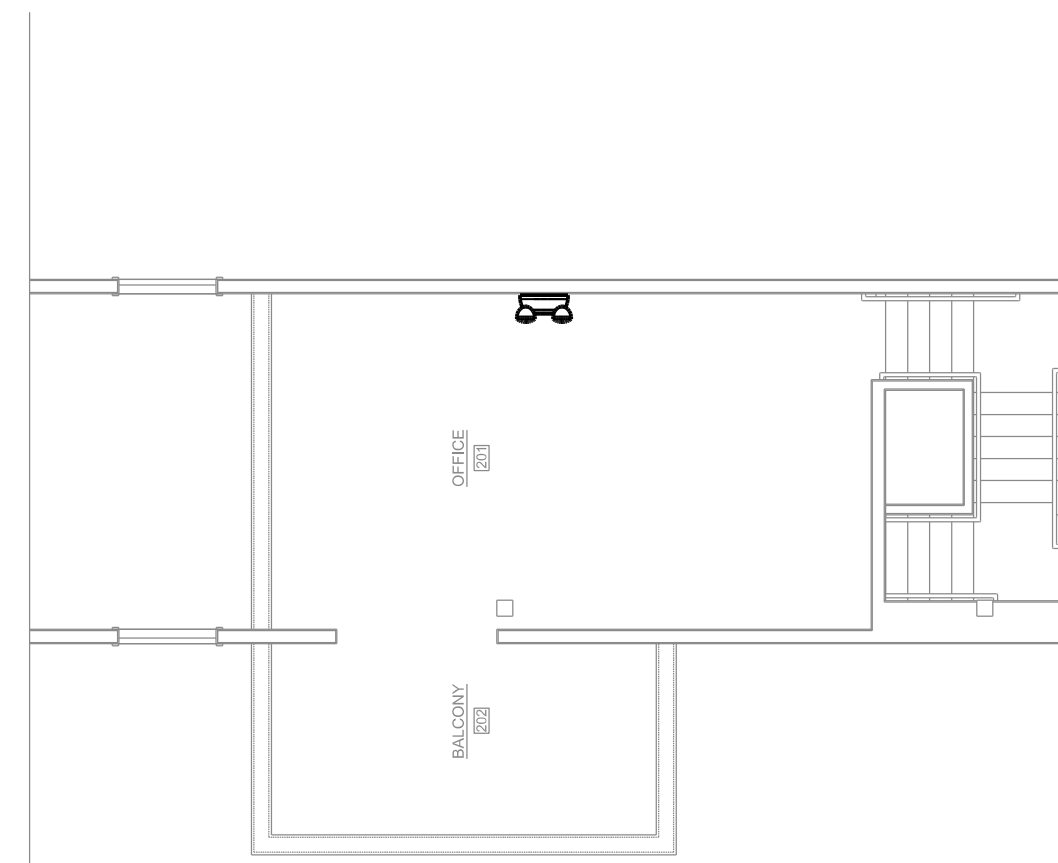
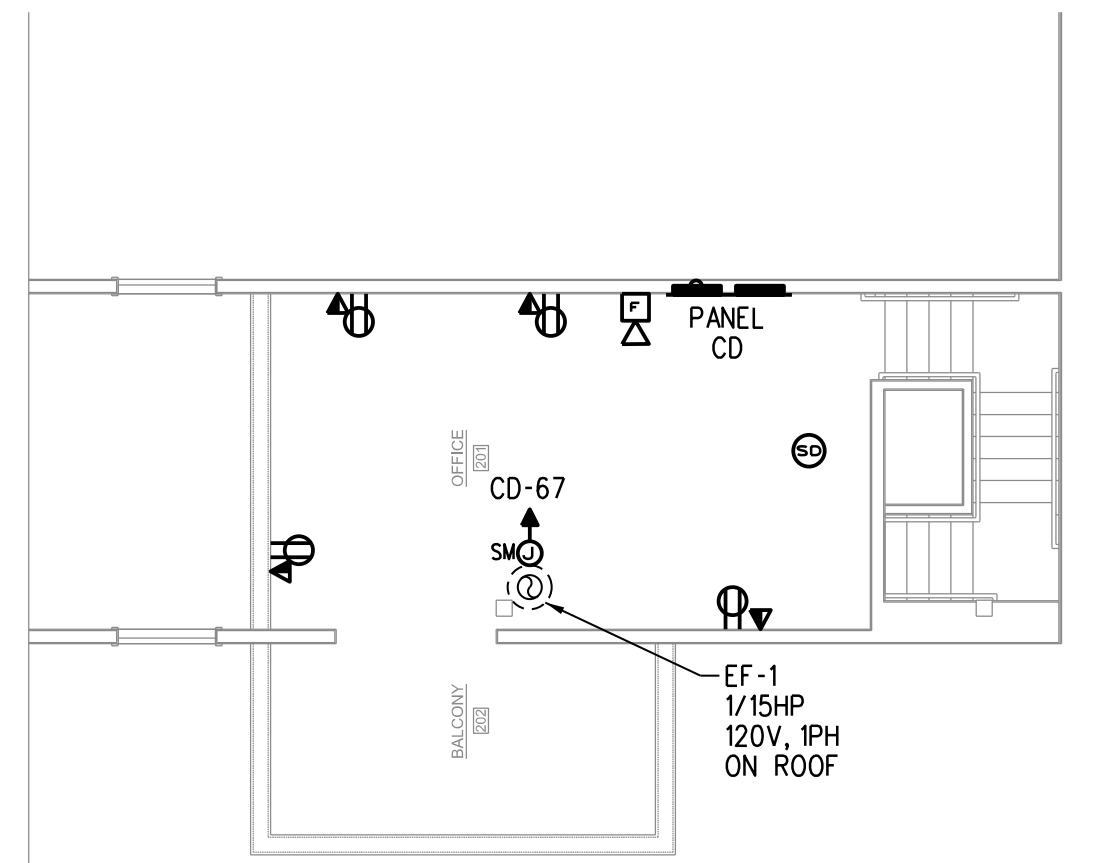
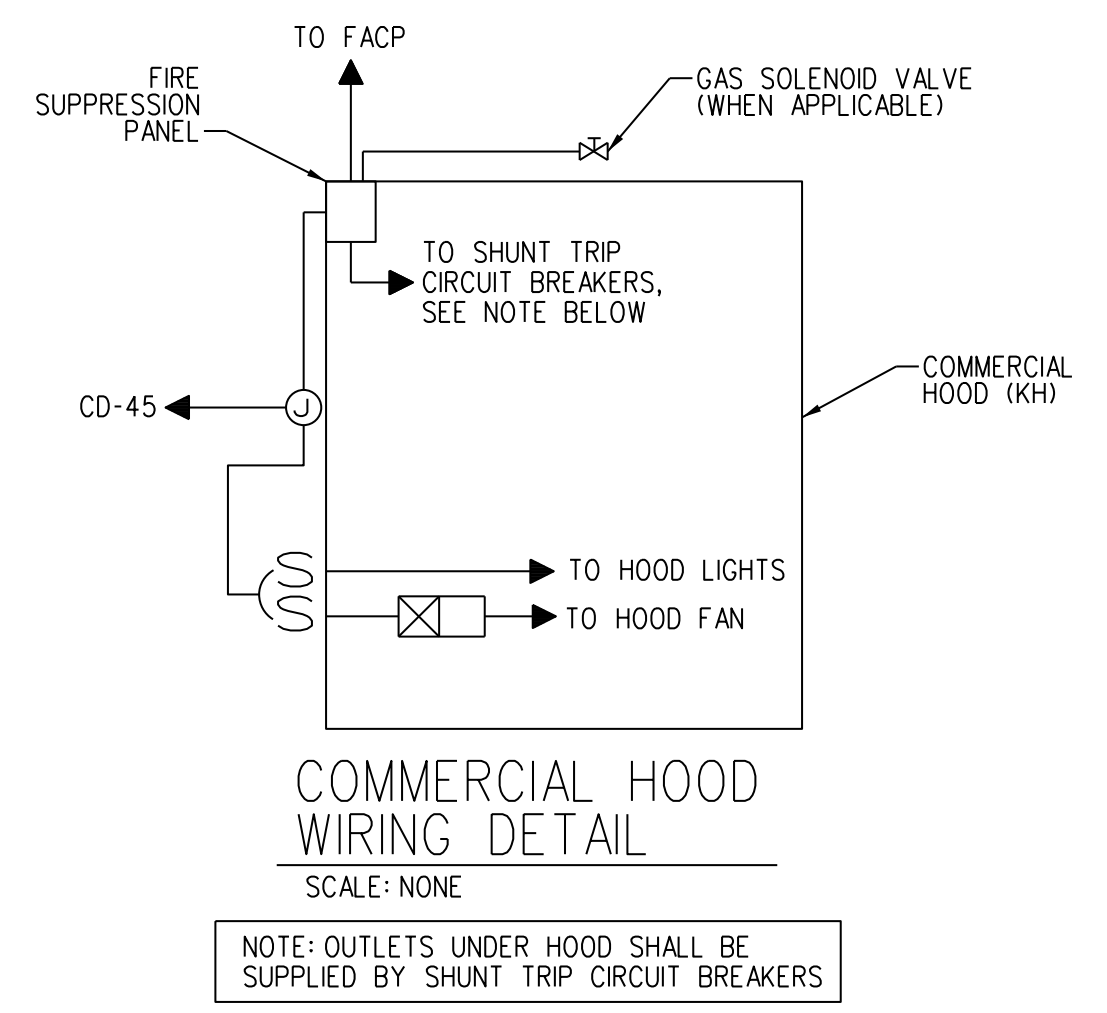


LIGHTING PLAN
SCALE: 1/8"=1'-0"



POWER PLAN
SCALE: 1/8"=1'-0"



APPLIANCE SCHEDULE		
EQUIP NO	ITEM	ELECTRICAL REQUIREMENTS
AP1	48" GAS RANGE	120V, 1PH, 3.4A, 15A BREAKER
AP2	60" RANGE HOOD	120V, 1PH, 20A BREAKER
AP3	30" FULL HEIGHT WINE CELLAR	120V, 1PH, 2.3A, 15A BREAKER
AP4	36" REFRIGERATOR	120V, 1PH, 9.9A, 20A BREAKER
AP5	48" REFRIGERATOR	120V, 1PH, 9.9A, 20A BREAKER
AP6	24" DISHWASHER	120V, 1PH, 12A, 20A BREAKER
AP7	GLASSWASHER	120V, 1PH, 1.8KW, 20A BREAKER
AP8	24" ELECTRIC COOKTOP	240/208V, 1PH, 15A, 2P-20A BREAKER
AP9	30" WARMING DRAWER	120V, 1P, 3.8A, 15A BREAKER
AP10	30" SINGLE ELECTRIC WALL OVEN	240V, 1PH, 21.3A, 2P-30A BREAKER
AP11	24" UNDERCOUNTER WINE REFRIGERATOR	120V, 1PH, 3A, 15A BREAKER
AP12	30" FULL HEIGHT WINE CELLAR	120V, 1PH, 3A, 15A BREAKER
AP13	30" FULL HEIGHT WINE CELLAR	120V, 1PH, 3A, 15A BREAKER
AP14	GLASSWASHER	120V, 1PH, 1.8KW, 20A BREAKER
AP15	78" REACH-IN COOLER	120V, 1PH, 9.6A, 20A BREAKER

NOTES:
CONTRACTOR SHALL VERIFY ALL EQUIPMENT LOCATIONS WITH ARCHITECT AND OWNER PRIOR TO ROUGH-IN.

Prepared For:

Consultant: **BENNETT ENGINEERING**
MECHANICAL, ELECTRICAL, & PLUMBING

Architect: **CELLAR DOOR BRICK NORTH EAST WING**
THOMPSON'S POINT, PORTLAND ME

Project: **CELLAR DOOR BRICK NORTH EAST WING**
THOMPSON'S POINT, PORTLAND ME

Revisions:

Date: 1-27-16
Scale: 1/8" = 1'-0"

PROGRESS PRINT NOT FOR CONSTRUCTION

ELECTRICAL PLAN

E1