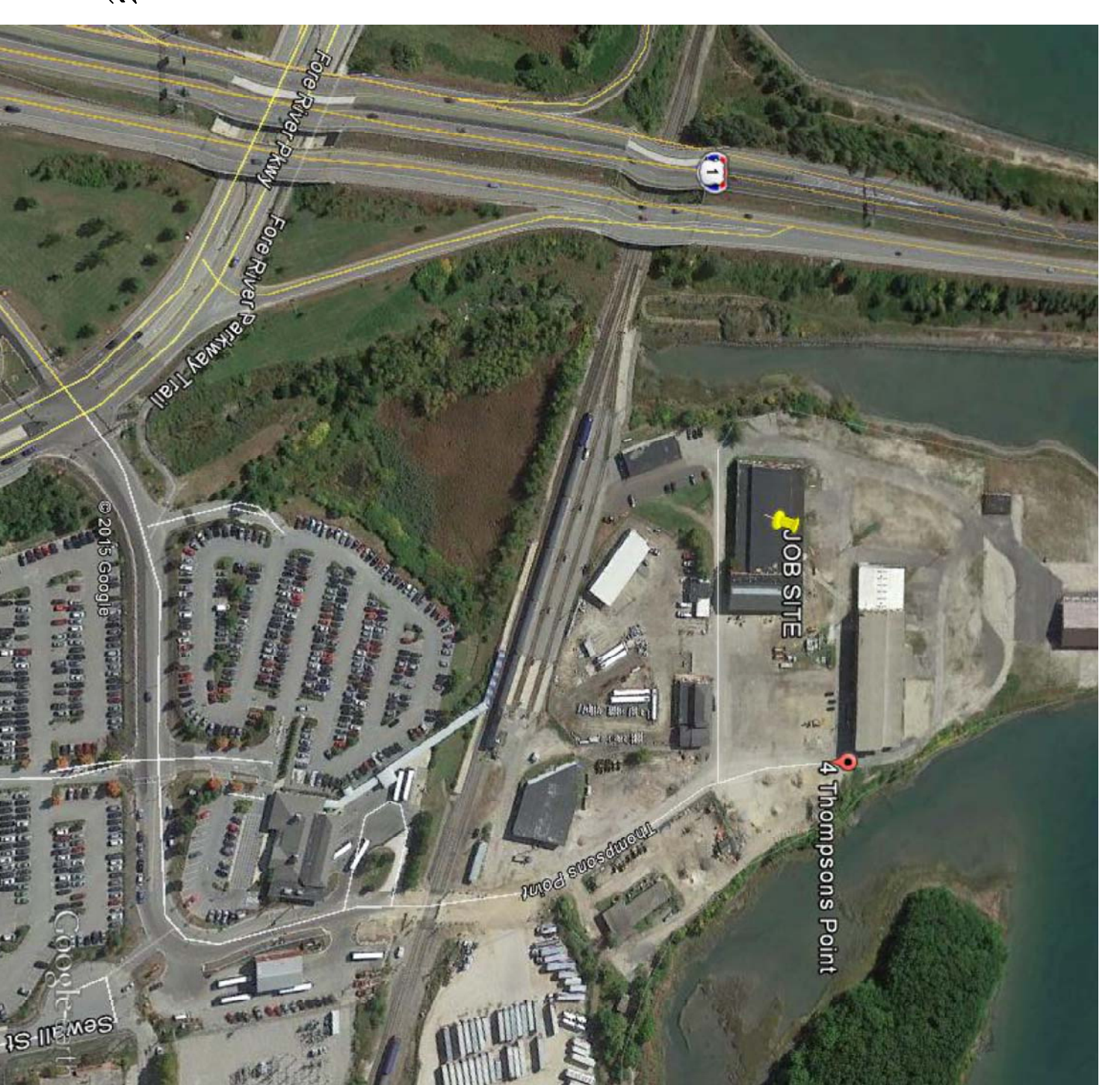
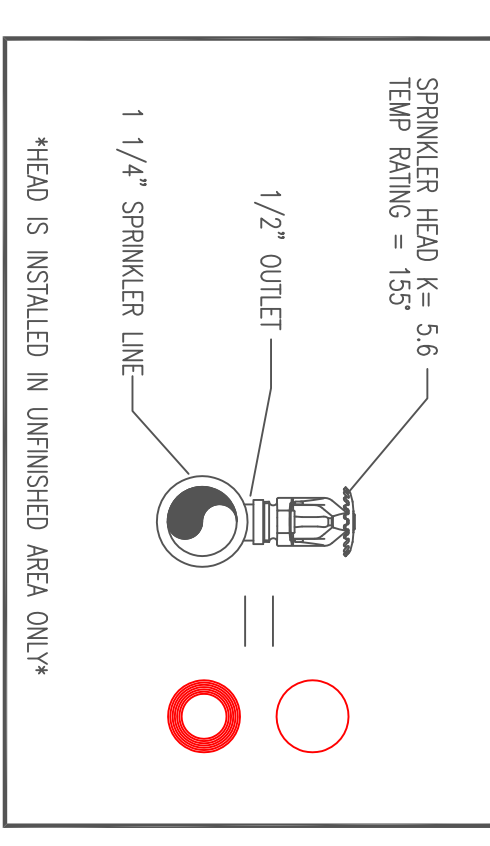


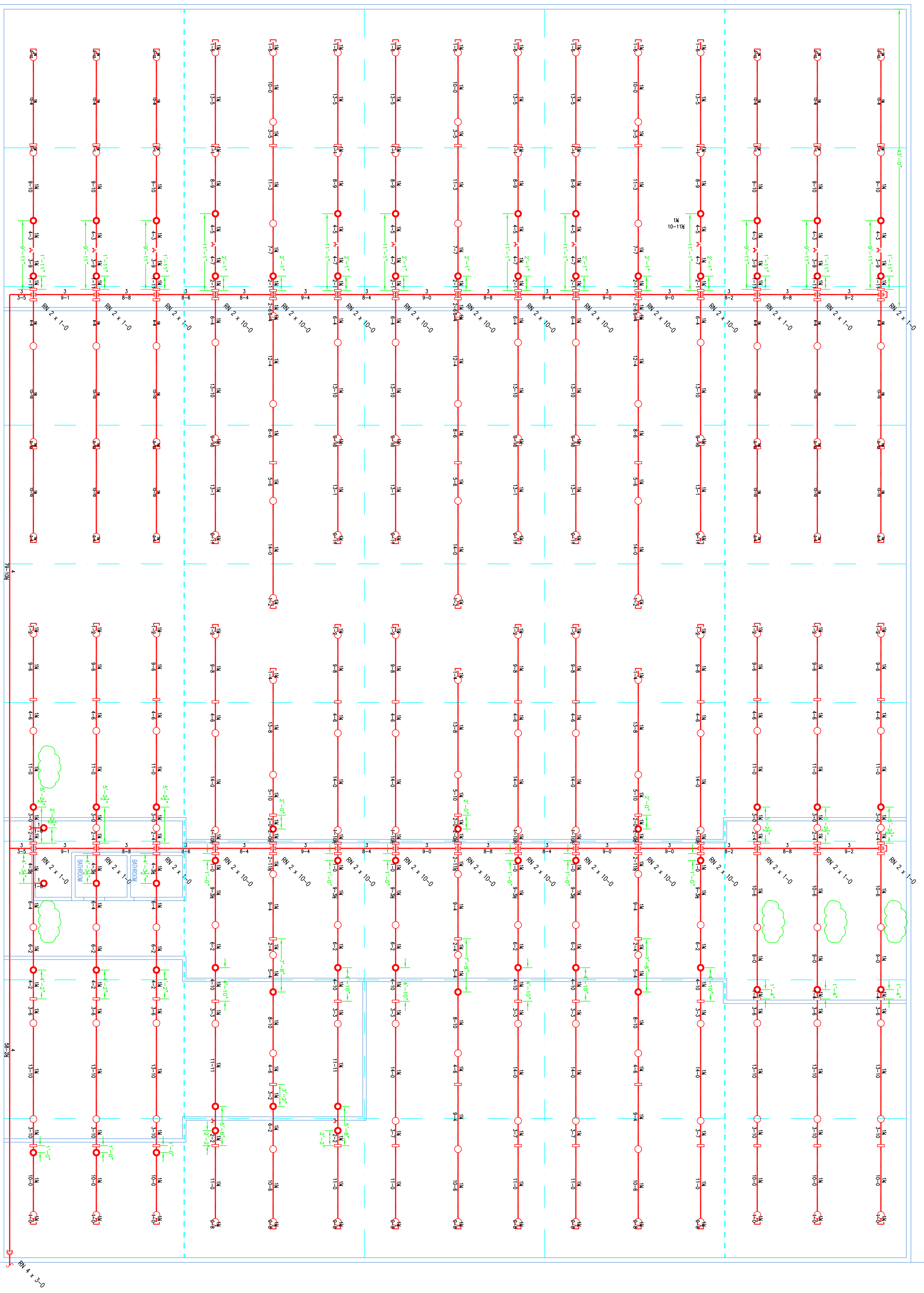
- NEW PIPE RISEN UP OR DOWN
- EXISTING PIPE
- △ PROPOSED PIPE
- △ SYSTEM RISER
- PIPE PITCH & MANS J LINES
- ⊕ SWAY BRACING
- ⊙ HYDRAULIC CALC. POINT

ALL SPRINKLER SYSTEMS SHALL BE SCHEDULE 40 PIPE UNLESS OTHERWISE NOTED. ALL FITTINGS SHALL BE SCHEDULE 40 WITH APPROPRIATE FINISH. ALL FITTINGS 1 1/2" & SMALLER TO BE SCHEDULE 40. POSITION, LOCATION, SPACING AND USE OF SPRINKLERS SHALL BE IN ACCORDANCE WITH NFPA 13. HANGERS SHALL BE IN ACCORDANCE WITH NFPA 13. SPRINKLER HEADS SHALL BE IN ACCORDANCE WITH NFPA 13. (SEE PLANS FOR LOCATION OF HEADS AND SYSTEM HANGERS). RELOCATION OF HEADS AND SYSTEM HANGERS SHALL BE DONE IN ACCORDANCE WITH NFPA 13. (SEE PLANS FOR LOCATION OF HEADS AND SYSTEM HANGERS). HIGH TIE-IN FIRE PROTECTION IS TO BE DONE WITH DIMENSIONS AND LOCATIONS GIVEN FOR SPRINKLER EQUIPMENT FROM PREVIOUS TEMPERATURE SENSITIVE EQUIPMENT TO PROTECT WATER FILLED PIPING AND TO PROVIDE ACCURATE HEAD THROUGHOUT BUILDING TO PROTECT WATER FILLED PIPING AND EQUIPMENT FROM PREVIOUS TEMPERATURE SENSITIVE EQUIPMENT TO PROVIDE ACCURATE HEAD THROUGHOUT ACTUAL FIELD CONDITIONS. OWNER IS RESPONSIBLE TO MAINTAIN THE SPRINKLER SYSTEM AND TO PROVIDE ACCURATE HEAD THROUGHOUT OF NFPA 13. INSPECTION TESTING, MAINTENANCE OF WATER-BASED FIRE PROTECTION SYSTEMS AND/ OR LINES, COES AND BRANNINGS, IN/2 AND/OR LOCAL TRADES TO COORDINATE THEIR WORK WITH SPRINKLER CONTRACTOR. ALL ELECTRICAL, ELECTRICAL AND PLUMBING TRADES TO COORDINATE THEIR WORK WITH SPRINKLER CONTRACTOR. ALL ELECTRICAL WORK IS TO BE DONE BY OTHERS.

- EXISTING  
1 1/2" BRASS UPRIGHT  
DEFLECTIONS TO 0.6" BELOW  
COMBUSTIBLE BEAMS
- NEW GLOBE\*  
MODEL QJ3615  
70/2195  
K=3.56  
1 1/2" BRASS UPRIGHT  
DEFLECTIONS TO 0.6" BELOW  
COMBUSTIBLE BEAMS



**P** PLOT PLAN  
SCALE: N.T.S.



DRIVEWAY

**1** GROUND FLOOR (DRY)  
TOTAL PROJECTED AREA 23,000 SQ.FT.  
SCALE 1/8" = 1'-0"

4OR APPROVED EQUAL\*  
TOTAL HEADS ON THIS SHEET: 255  
SCALE: 1/8" = 1'-0"  
REVISONS:  
NO. DATE: DESCRIPTION:  
DATE: DECEMBER 3, 2015  
DESIGNER: ED DOULAN (GMS# 515)  
CHECKED BY: AL FOSS  
LOCATION:  
4 THOMPSON'S POINT  
PORTLAND, ME  
DRAWING TITLE:  
BRICK NORTH  
CELLAR DOOR, BREWERY  
DISTILLERY TENANT SPACES  
FIRE PROTECTION PLAN  
(NFPA 13 2010ed.)  
DRAWING NO.:  
FP-01