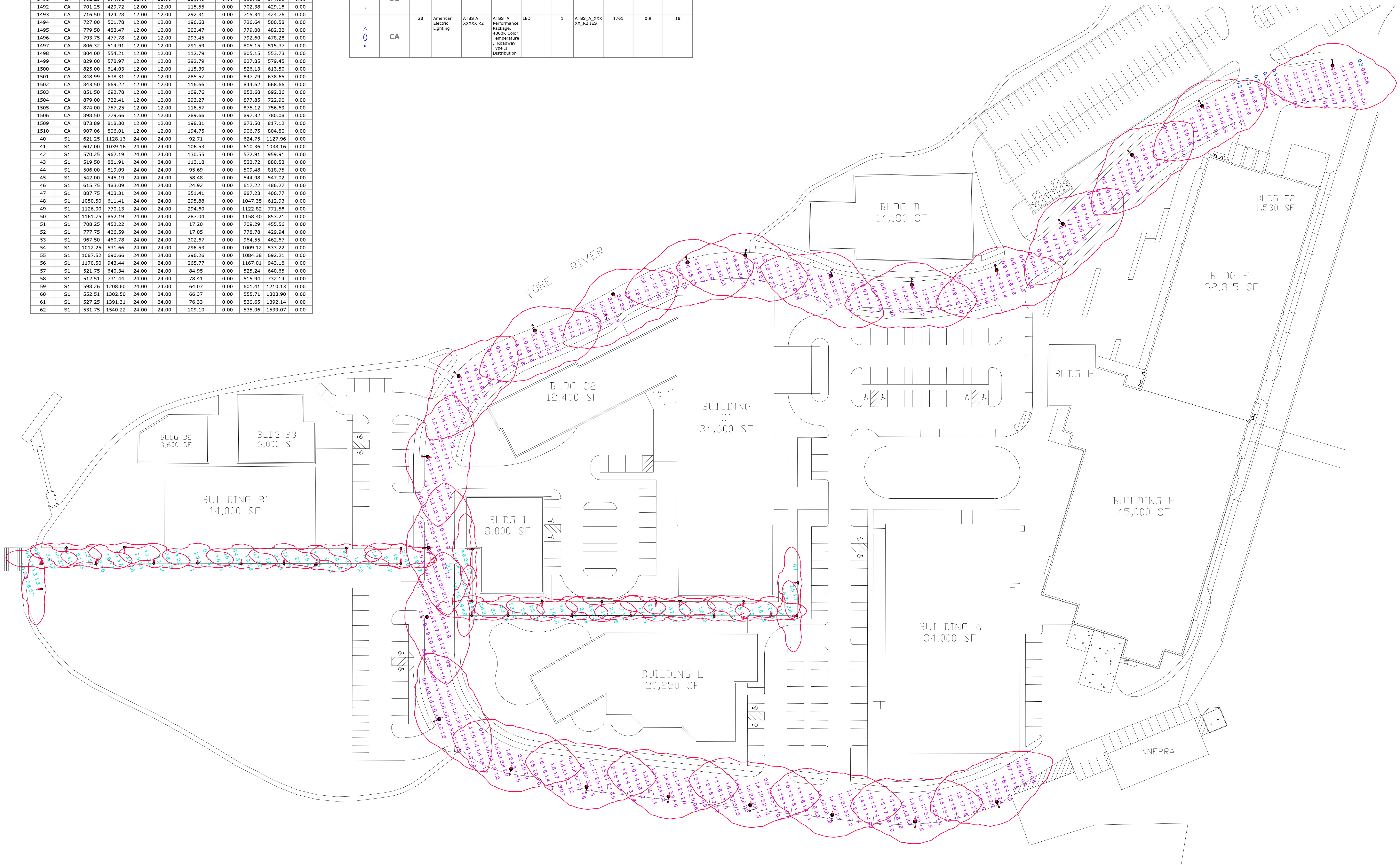
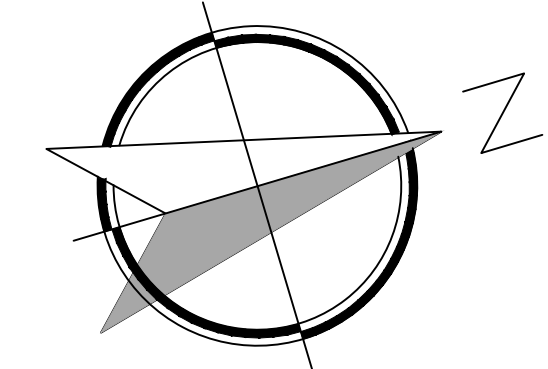


Luminaire Locations										
No.	Label	X	Y	Z	MH	Orientation	Tilt	X	Y	Z
1481	CA	617.51	52.78	12.00	12.00	198.74	0.00	617.11	51.60	0.00
1482	CA	592.01	61.63	12.00	12.00	289.98	0.00	590.83	62.05	0.00
1483	CA	584.25	92.47	12.00	12.00	113.41	0.00	585.40	91.97	0.00
1484	CA	611.00	116.63	12.00	12.00	293.10	0.00	609.85	117.12	0.00
1485	CA	604.00	151.09	12.00	12.00	109.59	0.00	605.18	150.67	0.00
1486	CA	630.25	175.09	12.00	12.00	295.97	0.00	629.13	175.64	0.00
1487	CA	645.50	219.28	12.00	12.00	292.96	0.00	644.35	219.77	0.00
1488	CA	661.50	263.16	12.00	12.00	294.72	0.00	660.36	263.68	0.00
1489	CA	675.77	306.32	12.00	12.00	294.52	0.00	674.63	306.84	0.00
1490	CA	688.76	337.97	12.00	12.00	298.95	0.00	687.66	338.57	0.00
1491	CA	682.25	374.81	12.00	12.00	110.43	0.00	683.42	374.38	0.00
1492	CA	701.25	429.72	12.00	12.00	115.55	0.00	702.38	429.18	0.00
1493	CA	716.50	424.28	12.00	12.00	292.31	0.00	715.34	424.76	0.00
1494	CA	727.00	501.78	12.00	12.00	196.68	0.00	726.64	500.58	0.00
1495	CA	779.50	483.47	12.00	12.00	203.47	0.00	779.00	482.32	0.00
1496	CA	793.75	477.78	12.00	12.00	293.45	0.00	792.60	478.28	0.00
1497	CA	806.32	514.91	12.00	12.00	291.59	0.00	805.15	515.37	0.00
1498	CA	804.00	554.21	12.00	12.00	112.79	0.00	805.15	553.73	0.00
1499	CA	829.00	578.97	12.00	12.00	292.79	0.00	827.85	579.45	0.00
1500	CA	825.00	614.03	12.00	12.00	115.39	0.00	826.13	613.50	0.00
1501	CA	848.99	638.31	12.00	12.00	285.57	0.00	847.79	638.65	0.00
1502	CA	843.50	669.22	12.00	12.00	116.66	0.00	844.62	668.66	0.00
1503	CA	851.50	692.78	12.00	12.00	109.76	0.00	852.68	692.36	0.00
1504	CA	879.00	722.41	12.00	12.00	293.27	0.00	877.85	722.90	0.00
1505	CA	874.00	757.25	12.00	12.00	116.57	0.00	875.12	756.69	0.00
1506	CA	898.50	779.66	12.00	12.00	289.66	0.00	897.32	780.08	0.00
1509	CA	873.89	818.30	12.00	12.00	198.31	0.00	873.50	817.12	0.00
1510	CA	907.06	806.01	12.00	12.00	194.75	0.00	906.75	804.80	0.00
1497	S1	621.25	1128.13	24.00	24.00	92.71	0.00	624.75	1127.96	0.00
41	S1	607.00	1039.16	24.00	24.00	106.53	0.00	610.36	1038.16	0.00
42	S1	570.25	962.19	24.00	24.00	130.55	0.00	572.91	959.91	0.00
43	S1	519.50	881.91	24.00	24.00	113.18	0.00	522.72	880.53	0.00
44	S1	506.00	819.09	24.00	24.00	95.69	0.00	509.48	818.75	0.00
45	S1	542.00	545.19	24.00	24.00	58.48	0.00	544.98	547.02	0.00
46	S1	615.75	483.09	24.00	24.00	24.92	0.00	617.22	486.27	0.00
47	S1	887.75	403.31	24.00	24.00	351.41	0.00	887.23	406.77	0.00
48	S1	1050.50	611.41	24.00	24.00	295.88	0.00	1047.35	612.93	0.00
49	S1	1126.00	770.13	24.00	24.00	294.60	0.00	1122.82	771.58	0.00
50	S1	1161.75	852.19	24.00	24.00	287.04	0.00	1158.40	853.21	0.00
51	S1	708.25	452.22	24.00	24.00	17.20	0.00	709.29	455.56	0.00
52	S1	777.75	426.59	24.00	24.00	17.05	0.00	778.79	429.94	0.00
53	S1	967.50	460.78	24.00	24.00	302.67	0.00	964.55	462.67	0.00
54	S1	1012.25	531.66	24.00	24.00	296.53	0.00	1009.12	533.22	0.00
55	S1	1087.52	690.66	24.00	24.00	296.26	0.00	1084.38	692.21	0.00
56	S1	1170.50	943.44	24.00	24.00	265.77	0.00	1167.01	943.18	0.00
57	S1	521.75	640.34	24.00	24.00	84.95	0.00	525.24	640.65	0.00
58	S1	512.51	731.44	24.00	24.00	78.41	0.00	515.94	732.14	0.00
59	S1	598.26	1208.60	24.00	24.00	64.07	0.00	601.41	1210.13	0.00
60	S1	552.51	1302.50	24.00	24.00	66.37	0.00	555.71	1303.90	0.00
61	S1	527.25	1391.31	24.00	24.00	76.33	0.00	530.65	1392.14	0.00
62	S1	531.75	1540.22	24.00	24.00	109.10	0.00	535.06	1539.07	0.00

Statistics							
Description	Symbol	Avg	Max	Min	Max/Min	Avg/Min	Avg/Max
main roadway lighting	+	1.6 fc	3.7 fc	0.3 fc	12.3:1	5.3:1	0.4:1
Pedestrian Lane	+	2.3 fc	4.9 fc	0.2 fc	24.5:1	11.5:1	0.5:1

Luminaire Schedule											
Symbol	Label	Quantity	Manufacturer	Catalog Number	Description	Lamp	Number Lamps	Filename	Lumens Per Lamp	Light Loss Factor	Wattage
+	S1	23	Holophane	LEDG 072 70 4K 00 2H L3	LEDG 072 70 4K 00 2H L3	72 LED ARRAY	1	LEDG_072_70_4K_00_2H_L3.ies	9604.354	0.81	164
+	CA	28	American Electric Lighting	ATBS A XXXXX R2	ATBS A Performance Package, 4000K Color Temperature, Roadway Type II Distribution	LED	1	ATBS_A_XXX XX_R2.IES	1761	0.9	18



THE FOREFRONT AT THOMPSON'S POINT
 PHOTOMETRIC PLAN