



**Submittal Sheet**

01/17/2017

**ITEM# 20 - EXHAUST HOOD (1 EA REQ'D)**

Captive-Aire 6030-ND-2-PSP-F

15ft 0" Long Exhaust-Only Wall Canopy Hood with Front Perforated Supply Plenum with Built-in 3" Back Standoff

**ACCESSORIES**

Mfr	Qty	Model	Spec
Captive-Aire	1		ANSUL-3.0 Ansul 3 gallon Fire System in Utility Cabinet (includes pre-piped hood(s) with detection, tank(s), release mechanism, microswitches and pull station)
Captive-Aire	1		DU200HFA High Speed Direct Drive Centrifugal Upblast Exhaust Fan with disconnect switch and 20-3/4" wheel. Exhaust Fan handles 3000 CFM @ -1.500" wc ESP, Fan runs at 1142 RPM. Exhaust Motor: 5.000 HP, 3 Phs, 208 V, 60Hz, 15.0 FLA, ODP, Premium (EPlus3) Eff
Captive-Aire	1		A2-D.250-G15 Direct Gas Fired Heated Make Up Air Unit with 15" Blower Supply Fan handles 2700 CFM @ 0.500" wc ESP, Fan runs at 747 RPM. Heater supplies 207036 BTUs. 71°F Temperature Rise. [Fuel: Natural Gas] Supply Motor: 2.000 HP, 3 Phase, 208 V, 60Hz, 6.1 FLA, ODP, Premium (EPlus3) Eff. Down Discharge - Air Flow Right -> Left
Captive-Aire	1		DCV-1111 Demand Control Ventilation, w/ control for 1 Exhaust Fan, 1 Supply Fan, Exhaust on in Fire, Lights out in Fire, Fans modulate based on duct temperature. INVERTER DUTY THREE PHASE MOTOR REQUIRED! Room temperature sensor shipped loose for field installation. Verify distance between VFD and Motor; additional cost could apply if distance exceeds 50 feet. Includes 2 Duct Thermostat kits
Captive-Aire	1		Factory Services

**ELECTRICAL**

	VOLTS	CYCLE	PHASE	CONN	AFF	NEMA	AMPS	KW	HP	MCA	MOCP
1											

**GAS**

	SIZE	MBTU	KW
1			

**STEAM**

	INLET SIZE	RETURN SIZE	LB/HR	PSIG (min)	PSIG (max)
1					

**WATER**

	HOT SIZE	HOT AFF	HOT GPH	COLD SIZE	COLD AFF	FILTERED SIZE	FILTERED AFF	CONDENSER INLET SIZE	CONDENSER OUTLET SIZE
1									

**WASTE**

	INDIRECT SIZE	DIRECT SIZE
1		

**VENTILATION**

	EXHAUST					MAKE UP				
	WIDTH	DEPTH	DIAM	CFM	SPWG	WIDTH	DEPTH	DIAM	CFM	SPWG
1										

**HOOD INFORMATION - J048B002149**

HOOD TAG NO	MODEL	LENGTH INCH	WIDTH INCH	HEIGHT INCH	HOOD WEIGHT LBS	NET WEIGHT LBS	MAXIMUM CAPACITY CFM	MINIMUM CAPACITY CFM
1	6520	151.00"	60"	3000			4"	2"
1	NS-2-PSP-F						1200 (-0.71)"/1200 (-0.71)"/>	

**PERFORMANCE DATA**

EFFICIENCY R 9	TYPE	TYPE	TYPE	TYPE	TYPE	TYPE	TYPE

**PERFORMED SUPPLY PLANK(S)**

HOOD TAG NO	POS.	LENGTH INCH	WIDTH INCH	HEIGHT INCH	TYPE	WIDTH INCH	LENGTH INCH	DIAMETER INCH	SP.
1	Front	198"	18"	6"	4"	18"	198"	6.25	0.127"
					4"	18"	198"	6.25	0.127"

**GREASE DUCT SPECIFICATIONS:**  
 PROVIDE GREASE DUCT EQUAL TO CAPTIVEAIRE SYSTEMS MODEL "DW" ROUND 20 GAUGE 430 STAINLESS STEEL DUCTWORK. MODEL "DW" IS LISTED TO UL-1978 AND IS INSTALLED USING "V" CLAMP LOCKING CONNECTIONS SEALED WITH 3M FIRE BARRIER 2000 PLUS. MODEL "DW" DOES NOT REQUIRE WELDING PROVIDING IT HAS BEEN INSTALLED PER THE MANUFACTURERS INSTALLATION GUIDE. PROVIDE RATED ACCESS DOORS AT EVERY CHANGE IN DIRECTION AND EVERY 12' ON CENTER PER MANUFACTURERS LISTING MODEL "DW" HORIZONTAL RUNS LESS THAN 75 FT. CAN BE SLOPED 1/16" PER 12", HORIZONTAL RUNS MORE THAN 75 FT. CAN BE SLOPED 3/16" PER 12". DUCT SHOULD BE SLOPED AS MUCH AS POSSIBLE TO REDUCE THE CHANCE OF GREASE ACCUMULATION IN HORIZONTAL RUNS.  
 IF THE DUCT IS WITHIN 18 INCHES OF COMBUSTIBLE MATERIAL, PROVIDE UL-2221 LISTED DOUBLE WALL GREASE DUCT EQUAL TO CAPTIVEAIRE SYSTEMS MODEL "DW" - 2R, 3R, OR 3Z. ROUND 20 GAUGE 430 STAINLESS INNER DUCT INSULATED WITH A 24 GAUGE 430 STAINLESS OUTER SHELL.

**CAPTIVEAIRE SYSTEMS RECOMMENDS THE USE OF LISTED, PRE-FABRICATED ROUND GREASE EXHAUST DUCT TO REDUCE STATIC PRESSURE IN THE SYSTEM, MINIMIZE INSTALLATION AND INSPECTION TIMES, AND ENSURE DUCT IS LIQUID TIGHT**

**HVAC DISTRIBUTION NOTE**  
 IT IS RECOMMENDED NOT TO INSTALL HIGH VELOCITY DIFFUSERS OR HVAC RETURNS WITHIN TEN (10) FEET OF THE EXHAUST HOOD. PERFORATED DIFFUSERS ARE RECOMMENDED.

**VERIFY CEILING HEIGHT**

\_\_\_\_\_

**CUSTOMER APPROVAL TO MANUFACTURE:**

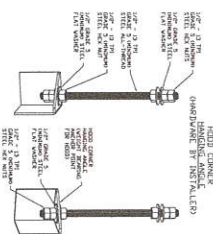
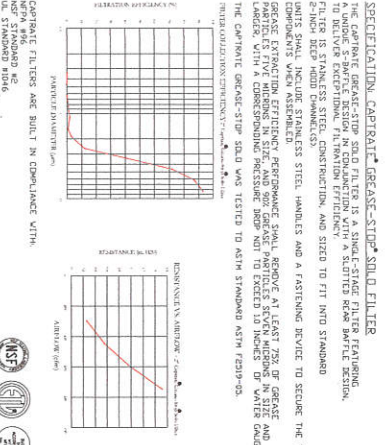
Approved on Hood

Approved with No Exception Taken

Revised and Resubmit

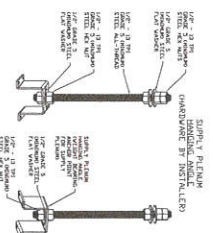
Signature: \_\_\_\_\_ Date: \_\_\_\_\_

PATENT NUMBERS	AC-PIP (United States) - US Patent 7,962,800 B2	AC-PIP (Canada) - CA Patent 2,328,230
HOOD TAG NO	1	1
MODEL	6520	NS-2-PSP-F
LENGTH	151.00"	
WIDTH	60"	
HEIGHT	3000	
HOOD WEIGHT		
NET WEIGHT		
MAXIMUM CAPACITY	4"	
MINIMUM CAPACITY	2"	
EFFICIENCY R 9		
TYPE		
TYPE		
TYPE		
TYPE		
TYPE		
TYPE		
TYPE		



**ASSEMBLY INSTRUCTIONS**

HANGING ANGLE MUST BE SUPPORTED WITH 1/2" - 13 TPI ANGLE. ANGLE SHOULD BE SUPPORTED WITH WASHINGTON 5 GROUND ANCHOR, ANGLE POINTS WITH 1/2" - 13 TPI ANGLE AND CEILING ANCHOR POINTS WITH 1/2" - 13 TPI DOUBLE END HEX NUT CONNECTION BENEATH HOOD HANGING ANGLE AND ANGLE CEILING ANCHORS MAINTAIN 1/4" OF SPACE BETWEEN HOOD AND ANCHORS. MAINTAIN 1/4" OF ALL HEX NUTS TO 57° TAPS.



**ASSEMBLY INSTRUCTIONS**

HANGING ANGLE MUST BE SUPPORTED WITH 1/2" - 13 TPI ANGLE. ANGLE SHOULD BE SUPPORTED WITH WASHINGTON 5 GROUND ANCHOR, ANGLE POINTS WITH 1/2" - 13 TPI ANGLE AND CEILING ANCHOR POINTS WITH 1/2" - 13 TPI DOUBLE END HEX NUT CONNECTION ABOVE CEILING ANCHORS. MAINTAIN 1/4" SPACE BETWEEN HOOD HANGING ANGLE AND ANCHORS. MAINTAIN 1/4" OF SPACE BETWEEN HOOD AND ANCHORS. MAINTAIN 1/4" OF ALL HEX NUTS TO 57° TAPS.

**CAPTIVEAIRE**

www.captiveaire.com

MAINE OFFICE

PO Box 66, 178 South Rd., Topsheld, ME, 04490 PHONE: (207) 796-2590 FAX: (415) 227-5546 EMAIL: capt@capa.com

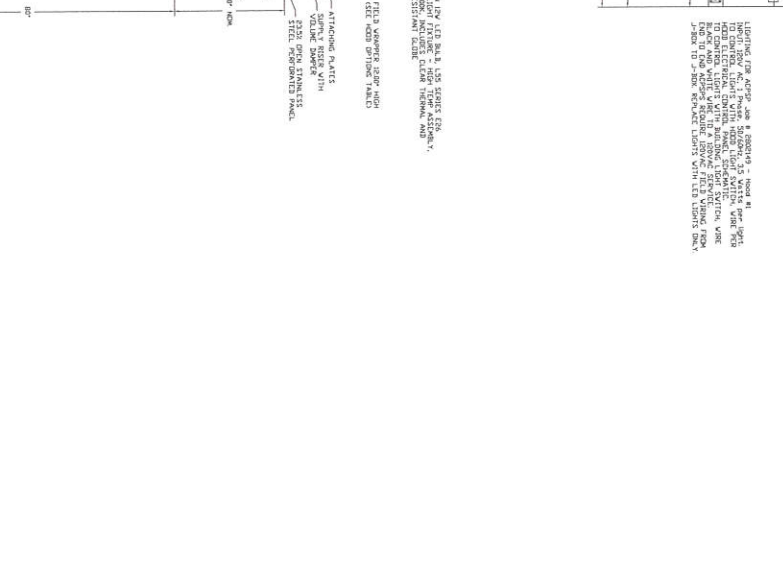
THOMPSON POINT BRICK SOUTH REVISED

6030-ND-2-PSP-F

Captive-Aire

SHEET NO. 1

Item #20



**PLAN VIEW - HOOD #1**  
 15" 0" DIA. FAN MOTOR (SEE DRAWING 6030-ND-2-PSP-F)  
 NOTE: Additional wiring shall be provided for hood fan lamps.

**SECTION VIEW - HOOD #1**  
 MODEL 6030ND-2-PSP-F

- 15" 0" DIA. FAN MOTOR (SEE DRAWING 6030-ND-2-PSP-F)
- NOTE: Additional wiring shall be provided for hood fan lamps.
- 15" 0" DIA. FAN MOTOR (SEE DRAWING 6030-ND-2-PSP-F)
- NOTE: Additional wiring shall be provided for hood fan lamps.
- 15" 0" DIA. FAN MOTOR (SEE DRAWING 6030-ND-2-PSP-F)
- NOTE: Additional wiring shall be provided for hood fan lamps.

NO.	REVISIONS
1	DATE: 1/3/2017
2	DWG#:
3	2802149
4	DATE: 1/3/2017
5	DWG#:
6	2802149
7	DATE: 1/3/2017
8	DWG#:
9	2802149

Thompson Point r3  
 PORTLAND, ME, 04101

DATE: 1/3/2017  
 DWG#:  
 2802149

SCALE:  
 3/4" = 1'-0"

MASTER DRAWING

SHEET NO.  
 2

Item #20

**CAPTIVE AIR**  
 MAINE OFFICE  
 www.captiveaire.com  
 PO Box 88, 179 South Rd., Topsham, ME, 04490 PHONE: (207) 796-2590 FAX: (519) 227-5946 EMAIL: reg21@captiveaire.com

**Fire System Information - Job#2802149**

SYSTEM NO	TYPE	SIZE	FLOW (GPM)	SYSTEM	LOCATION DR. NO.
1	ANUL RISE	3.0	10	Fire Cabinet Right	Right

**Gas Valves**

SYSTEM NO	TYPE	SIZE	SUPPLIED BY
1	Mechanical	1.000	Captrava Systems

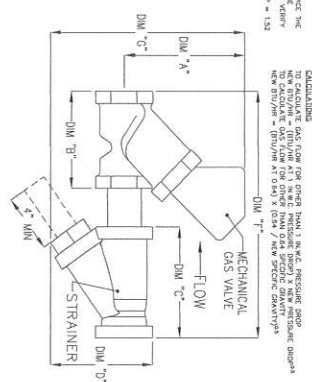
**Fire System Parts List Key**

KEY NUMBER - PART DESCRIPTION

KEY NO	DESCRIPTION	QTY. BY FACTORY	QTY. BY SITE
0 - 0	43-15123 AIR CYLINDER ASSEMBLY - Air Cylinder and Tubing for Mechanical Gas Valve Model Part #857523	1	0
0 - 1	METAL-CHEM BLENDER CAP - Mesh	7	0
0 - 2	BLENDER CAP - Mesh (for use with Anderson Release Actuator, Model Part #439242)	1	0
0 - 3	AN-DEM REGULATED RELEASE - Model Regulated Mechanical Release/Bractet Assembly, for 55 Enclosure (Inch/60) Model # 81-42842	1	0
0 - 4	AN-DEM REGULATED RELEASE - Model Regulated Mechanical Release/Bractet Assembly, for 55 Enclosure (Inch/60) Model # 81-42842	1	0
0 - 5	1.00-3.00 AERER - Aerosol can for wet chemical agent, 3 gallon, U.L.D. 79392	0	1
0 - 6	1.00-3.00 AERER - Aerosol can for wet chemical agent, 3 gallon, U.L.D. 79392	0	1
0 - 7	1.00-3.00 AERER - Aerosol can for wet chemical agent, 3 gallon, U.L.D. 79392	0	1
0 - 8	1.00-3.00 AERER - Aerosol can for wet chemical agent, 3 gallon, U.L.D. 79392	0	1
10 - 10	TANK LINK - Test Link (I Test Link) Model Part # 287816, Model # 28-287816	1	0
11 - 11	MISC-50A MISC-50A/111 - Includes 2 switches and mounting hardware # 201785, Model # 08-497185	1	0
14 - 14	493936 NOZZLE - 1/4 Nozzle, In/Choke Appliance replaces ANSL Part # 493947, Model # 08-497185	2	0
16 - 16	493936 NOZZLE - 1/4 Nozzle, In/Choke Appliance replaces ANSL Part # 493947, Model # 08-497185	2	0
18 - 18	493936 NOZZLE - 1/4 Nozzle, In/Choke Appliance replaces ANSL Part # 493947, Model # 08-497185	2	0
19 - 19	493936 NOZZLE - 1/4 Nozzle, In/Choke Appliance replaces ANSL Part # 493947, Model # 08-497185	2	0
21 - 24	493941 NOZZLE - 5/8 Nozzle, Appliance (replaces ANSL Part # 493942, Model # 08-497185)	3	0
21 - 24	493941 NOZZLE - 5/8 Nozzle, Appliance (replaces ANSL Part # 493942, Model # 08-497185)	3	0
25 - 25	493949 NOZZLE ADAPTER - Small Nozzle Adapter (replaces C&S Part # 493699)	3	0
25 - 26	493949 NOZZLE ADAPTER - Small Nozzle Adapter (replaces C&S Part # 493699)	7	0
26 - 26	493949 NOZZLE ADAPTER - Small Nozzle Adapter (replaces C&S Part # 493699)	7	0
26 - 27	493949 NOZZLE ADAPTER - Small Nozzle Adapter (replaces C&S Part # 493699)	1	0
28 - 28	5 HLT DIRECTOR - Sprays (1500psi) Lineage? Acid Part # 435547/435448 (DU)	2	0
29 - 29	ANS-500L FLUIDIC LINK - 3000psi F. R-102 and PIRANNA, Model Part # 439080	1	0
30 - 30	ANS-500L FLUIDIC LINK - 3000psi F. R-102 and PIRANNA, Model Part # 439080	1	0
31 - 34	SPSA REMOTE PULL STATION - Red composite without wire rope? 43448 (DU)	1	0
35 - 35	RE-117 PULLEY ELBOW - Low Temp Pulley Elbow, Set Screw Type Model Part # 415670, Model # 11-415671	2	0
36 - 36	RE-117 PULLEY ELBOW - High Temp Pulley Elbow, Compression Type Model Part # 415670, Model # 11-415671	1	0

**GAS VALVES AND STRAINERS**

TYPE	SIZE	VALVE	STRAINER	DESCRIPTION	QTY. BY FACTORY	QTY. BY SITE
MECHANICAL	1"	N/A	N/A	1.00-3.00 AERER (1271 N.A.C.)	0	1



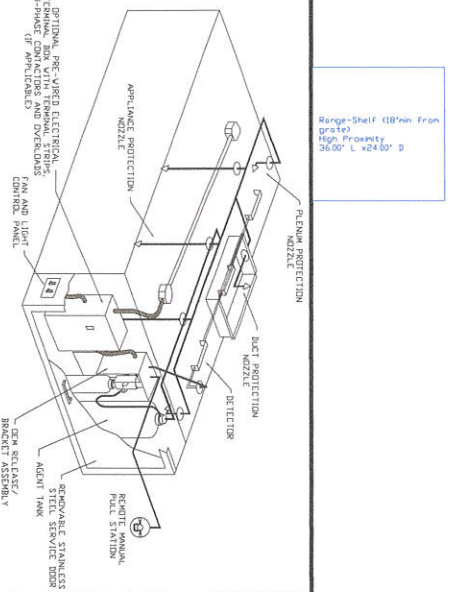
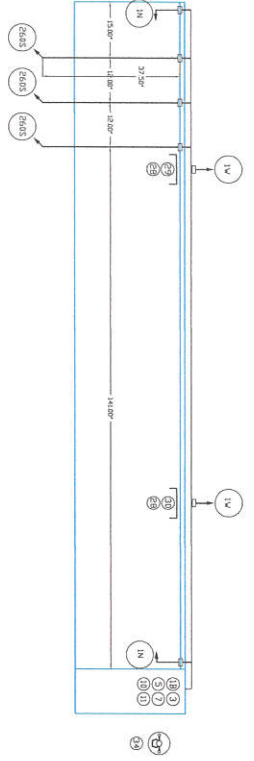
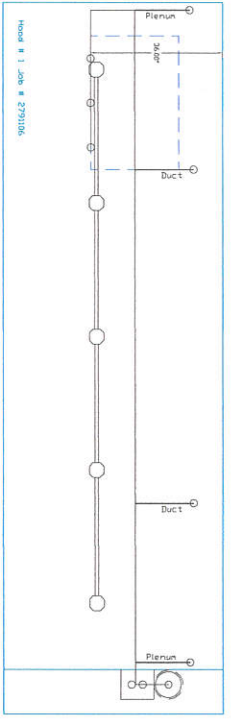
Thompson Point n3  
PORTLAND, ME, 04101

DATE: 1/3/2017  
DWG#: 2802149  
DRAWN BY: C-21  
SCALE: 3/4" = 1'-0"  
MASTER DRAWING

SHEET NO. 3







TYPICAL ANSUL R-102 SYSTEM LAYOUT

INCLUDES FIELD INSTALLATION AND INSPECTION DURING APPROX. BUSINESS HOURS VISITS FROM ONE VISIT TO SET PULL STATION & SYSTEM INSPECTION AND ONE CHECKED ONE DETECTOR AND ONE VALVE FOR SYSTEM IN A MAXIMUM SIZE OF 6' x 6' HOOD. THIS SYSTEM IS DESIGNED TO PROTECT A HOOD WITH A MAXIMUM SIZE OF 6' x 6' HOOD. THIS SYSTEM IS DESIGNED TO PROTECT A HOOD WITH A MAXIMUM SIZE OF 6' x 6' HOOD. THIS SYSTEM IS DESIGNED TO PROTECT A HOOD WITH A MAXIMUM SIZE OF 6' x 6' HOOD.

NOTES

- FIELD PIPE DRIPS AS SHOWN
- SLEEVING, ELBOWS, TEES, AND NOZZLES SUPPLIED BY GAS
- RELOCATE NOZZLES IF FLOW PATTERN IS BLOCKED BY SHELVEING.
- MAXIMUM 9' ELBOWS IN SUPPLY LINE FROM TANK TO FIRST NOZZLE
- MINIMUM 72" INCHES OF AGENT LINE FROM TANK TO FIRST NOZZLE
- FACTORY PIPING EXTENDS A MAXIMUM OF 6' ABOVE THE TOP OF THE HOOD
- APPLIANCE DIMENSIONS LISTED REPRESENT THE COOKING SURFACE SIZE NOT THE OVERALL APPLIANCE SIZE
- THIS FIRE SYSTEM COMPLIES WITH U.L. 300 REQUIREMENTS

SPECIFICATIONS

THE RESTAURANT FIRE SUPPRESSION SYSTEM SHALL BE THE PRE-ENGINEERED WITH UNDERPANEL CABINETRY, INC. (U.P.C.) SYSTEM. IT SHALL BE LISTED TO THE LISTING AGENCY. THE SYSTEM SHALL BE CAPABLE OF AUTOMATIC DETECTION AND ACTUATION FROM A DETECTOR. THE SYSTEM SHALL BE AVAILABLE. THE EXTINGUISHING AGENT SHALL BE A PRESSION CARBONATE. PRESSION AGENT-BASED FORMULATION. DESIGNED FOR FLAME, ANCHORAGE AND SECUREMENT WITH INSTRUCTIONS FOR FLUID AGENT HANDLING AND USE. THE REGULATED RELEASE MECHANISM SHALL BE COMPATIBLE WITH A FLUID AGENT. THE REGULATED RELEASE MECHANISM SHALL BE SELECTED AND THE SYSTEM THE TUBING LINK SHALL BE SUPPORTED BY A DETECTOR BRACKET/ LINKAGE ASSEMBLY.

- FIELD PIPE DRIPS AS SHOWN
- SLEEVING, ELBOWS, TEES, AND NOZZLES SUPPLIED BY GAS
- RELOCATE NOZZLES IF FLOW PATTERN IS BLOCKED BY SHELVEING.
- MAXIMUM 9' ELBOWS IN SUPPLY LINE FROM TANK TO FIRST NOZZLE
- MINIMUM 72" INCHES OF AGENT LINE FROM TANK TO FIRST NOZZLE
- FACTORY PIPING EXTENDS A MAXIMUM OF 6' ABOVE THE TOP OF THE HOOD
- APPLIANCE DIMENSIONS LISTED REPRESENT THE COOKING SURFACE SIZE, NOT THE OVERALL APPLIANCE SIZE
- THIS FIRE SYSTEM COMPLIES WITH U.L. 300 REQUIREMENTS

Job #: 2802149  
 Drawn By: Thompson Point #3  
 System Size: ANSUL-30 Total FP required: 10  
 Room # 1 Size: 12' x 10' x 8'  
 Riser # 2 Size: 12' x 10' x 8'  
 Riser # 3 Size: 12' x 10' x 8'

LEGEND - FIRE CABINET ANSUL SYSTEM

1A	15 GALLON TANK
1B	DEM. AUTOMATIC RELEASE
2	DEM. REGULATED RELEASE
3	ANSUL EX. (10L) AGENT (3 GAL.)
4	ANSUL EX. (10L) AGENT (3 GAL.)
5	ANSUL EX. (10L) AGENT (3 GAL.)
6	ANSUL EX. (10L) AGENT (3 GAL.)
7	CARRIAGE (101-20)
8	CARRIAGE (101-20)
9	CARRIAGE (101-20)
9A	CARRIAGE (101-20)
10	DOUBLE TANK CARRIAGE
11	DOUBLE MICROSSWITCH
12	HOSE ASSEMBLY
100	DUCT NOZZLE (430913)
1A	NOZZLE ASSEMBLY (419335)
1B	NOZZLE ASSEMBLY (419335)
1C	NOZZLE ASSEMBLY (419335)
1D	NOZZLE ASSEMBLY (419335)
1E	NOZZLE ASSEMBLY (419335)
1F	NOZZLE ASSEMBLY (419335)
1G	NOZZLE ASSEMBLY (419335)
1H	NOZZLE ASSEMBLY (419335)
1I	NOZZLE ASSEMBLY (419335)
1J	NOZZLE ASSEMBLY (419335)
1K	NOZZLE ASSEMBLY (419335)
1L	NOZZLE ASSEMBLY (419335)
1M	NOZZLE ASSEMBLY (419335)
1N	NOZZLE ASSEMBLY (419335)
1O	NOZZLE ASSEMBLY (419335)
1P	NOZZLE ASSEMBLY (419335)
1Q	NOZZLE ASSEMBLY (419335)
1R	NOZZLE ASSEMBLY (419335)
1S	NOZZLE ASSEMBLY (419335)
1T	NOZZLE ASSEMBLY (419335)
1U	NOZZLE ASSEMBLY (419335)
1V	NOZZLE ASSEMBLY (419335)
1W	NOZZLE ASSEMBLY (419335)
1X	NOZZLE ASSEMBLY (419335)
1Y	NOZZLE ASSEMBLY (419335)
1Z	NOZZLE ASSEMBLY (419335)
20	NOZZLE ASSEMBLY (419335)
21	NOZZLE ASSEMBLY (419335)
22	NOZZLE ASSEMBLY (419335)
23	NOZZLE ASSEMBLY (419335)
24	NOZZLE ASSEMBLY (419335)
25	NOZZLE ASSEMBLY (419335)
26	NOZZLE ASSEMBLY (419335)
27	NOZZLE ASSEMBLY (419335)
28	NOZZLE ASSEMBLY (419335)
29	NOZZLE ASSEMBLY (419335)
30	NOZZLE ASSEMBLY (419335)
31	NOZZLE ASSEMBLY (419335)
32	NOZZLE ASSEMBLY (419335)
33	NOZZLE ASSEMBLY (419335)
34	NOZZLE ASSEMBLY (419335)

**CAPTIVE AIRE**  
 MAINE OFFICE  
 PO Box 86, 179 South Rd., Topsheld, ME, 04490 PHONE: (207) 796-2590 FAX: (207) 227-5246 EMAIL: www.captiveaire.com

REVISIONS  
 DATE  
 BY

Thompson Point r3  
 PORTLAND, ME, 04101

DATE: 1/3/2017  
 DWG: 49  
 2802149

DRAWN BY: P-C-21  
 SCALE: 3/4" = 1'-0"  
 MASTER DRAWING

SHEET NO. 4

**EXHAUST FAN INFORMATION - Job#2802149**

UNIT NO.	FAN UNIT MODEL #	CFM	ESP	RPM	HP	SHIP #	VOL.1 CLASS	FLA	WEIGHT	SONES
1	80000000	3000	1500	1142	3.008	14440	3	208	15.8	1.79

**MUL FAN INFORMATION - Job#2802149**

UNIT NO.	FAN UNIT MODEL #	BLDGCK	HOSING	MIN CFM	SECTION	ESP	RPM	HP	SHIP #	VOL.1 CLASS	FLA	WEIGHT	SONES	THICKER FILTERATION	
2	AE-320-015	015-79	AE-D258	2000	2700	0100	747	2280	0.9720	3	208	6.1	893	10.7	92

**GAS FIBER MARK-UP AIR (UNITS)**

FAN UNIT NO.	UNIT TYPE	TEMP RISE	REQUIRED HEAT GAS	GAS TYPE
2	Blow	71.00 F	7.00 Mc - 14.00 Mc	Natural

**FAN OPTIONS**

FAN UNIT NO.	OPTION	DESCRIPTION
1	1	Grass Box
1	2	Full Coating for Exhaust Fans
1	3	5 Year Extended Warrant for Fan
1	4	5 Year Extended Warrant for Motor
1	5	5 Year Extended Warrant for Blower
1	6	AC Interlock Relay - 24VAC Coil
1	7	Motorized Backdraft Damper for AC-3 Housing
1	8	Full Coating for Commercial Heater
1	9	Paint Package
1	10	Paint Package Upgrade 3-35
1	11	Motorized Pressure Gauge - 5 to 15" WC
1	12	3 Year Extended Motor Warranty
1	13	Extra Set of Blows Blinders (Required and used only for DCV or Pressure Wash) - 3 Year Pressure Wash
1	14	Size 2 Direct Fired Heater Low CFM Profile Package. Used on Heaters under 2500 CFM

**FAN ACCESSORIES**

FAN UNIT NO.	ITEM	DESCRIPTION	QUANTITY	UNIT
1	1	Exhaust Valve	1	Each
1	2	Exhaust Motor	1	Each
1	3	Exhaust Blower	1	Each
1	4	Exhaust Housing	1	Each

**CURB ASSEMBLERS**

NO.	ITEM	DESCRIPTION	SIZE
1	34.1 LB	34.1 LB	34.1 LB
2	88 LB	88 LB	88 LB

**FAN SOUND INFORMATION**

FAN UNIT NO.	NOISE	1/2"	1"	2"	3"	4"	5"	6"	7"	8"
1	Exhaust	114	112	109	107	105	103	101	99	97
2	Supply	74	72	70	68	66	64	62	60	58

**REVISIONS**

NO.	DESCRIPTION

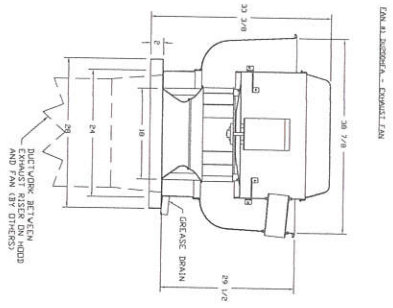


PO Box 86, 179 South Rd., Topsham, ME, 04490 PHONE: (207) 796-2550 FAX: (207) 796-2546 EMAIL: mc21@captivair.com

Thompson Point r3  
PORTLAND, ME, 04101

DATE: 1/3/2017  
DWG.#: 2802149  
DRAWN BY: C-21  
SCALE: 3/4" = 1'-0"  
MASTER DRAWING

SHEET NO. 5



- FEATURES:**
- DIRECT DRIVE CONSTRUCTION AND BELT/SHAFTS
  - 1/2" TYPICAL AIR GAP
  - RESISTANT MOTOR
  - OVER AND UNDER MOUNT
  - VIBRATION ISOLATION
  - INTERNAL VIBRING
  - THERMAL EXPANSION COMPENSATION (SINGLE PHASE)
  - HIGH LEAK BREAKDOWN 3000 CFM/F
  - SILENT CLASSIFICATION TESTING
- ADDITIONAL FEATURES:**
- DIRECT DRIVE CONSTRUCTION
  - WHILE EXHAUSTING AIR AT 3000 CFM/F
  - THERMAL EXPANSION COMPENSATION
  - THERMAL EXPANSION AND VIBRATION
  - OVER AND UNDER MOUNT
  - VIBRATION ISOLATION
  - HIGH LEAK BREAKDOWN 3000 CFM/F
  - SILENT CLASSIFICATION TESTING
- ORFICE BLANK LIST:**
- ORFICE BLANK FOR 3000 RPM
  - 3" TYPICAL DISTANCE AFTER MOUNTING
  - FAN BELT EXPOSED SIDE, FAN ORFICE BELT IS

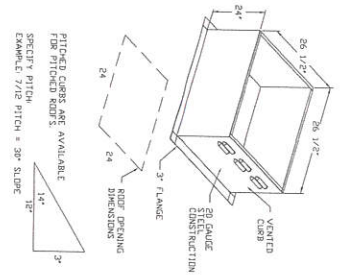
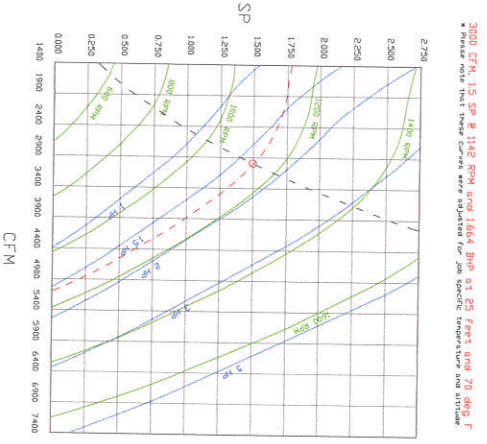


FIGURE 1 - EXHAUST PERFORMANCE CURVES.



Exhaust Fan Rating	CFM	Static Pressure	Power (HP)
3000 CFM	1142	1.5 SP	1664 BHP

Model	CFM	Static Pressure	Power (HP)
1200 CFM	1200	1.5 SP	1664 BHP

**REVISIONS**


**MAINE OFFICE**

www.captiveaire.com

PO Box 86, 179 South Rd., Topsham, ME, 04490 PHONE: (207) 796-2590 FAX: (207) 796-2596 EMAIL: info@captivair.com

**CAPTIVEAIR**

Thompson Point r3  
PORTLAND, ME, 04101

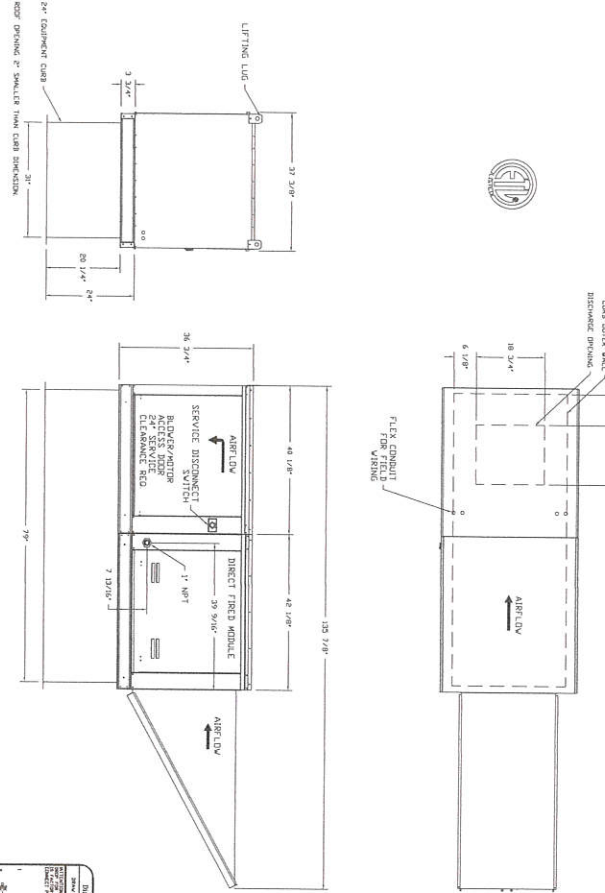
DATE: 1/3/2017  
DWG #: 2802149  
DRAWN BY: BJC-21  
SCALE: 3/4" = 1'-0"  
MASTER DRAWING

SHEET NO. 6



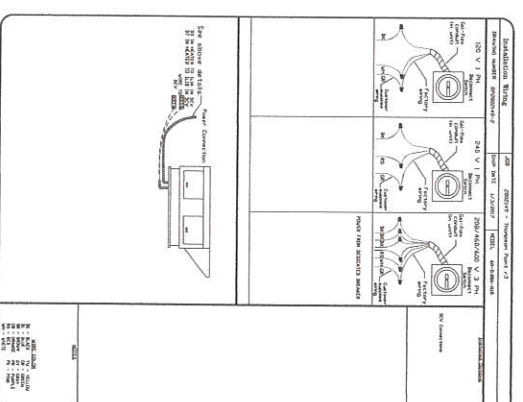
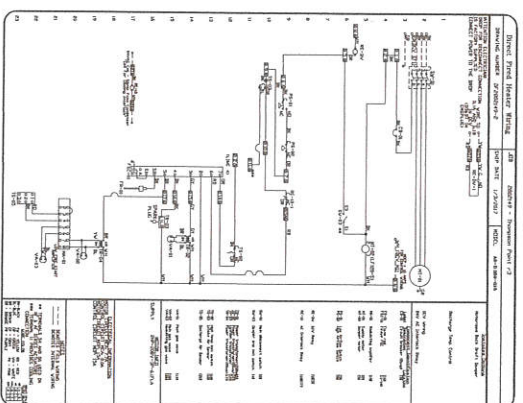
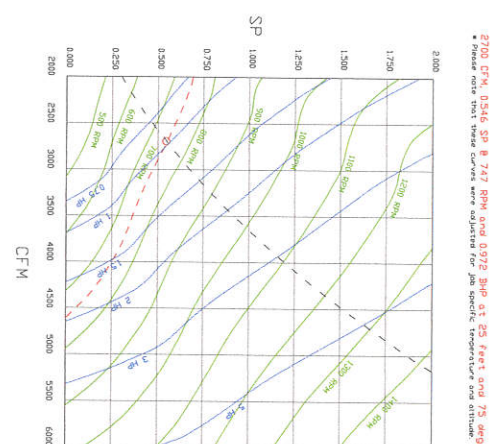


1. DIRECT FIRE HEATER MAKE UP AIR UNIT WITH 1" BLOWER
2. DOWN BLOWER - 1/2" AIR FLOW - 1/2" LEFT
3. DOWN BLOWER - 1/2" AIR FLOW - 1/2" RIGHT
4. DOWN BLOWER - 1/2" AIR FLOW - 1/2" DOWN
5. DOWN BLOWER - 1/2" AIR FLOW - 1/2" UP
6. FULL LENGTH OF CONDUIT - HEATER TO DOWN BLOWER
7. FULL LENGTH OF CONDUIT - HEATER TO DOWN BLOWER
8. FULL LENGTH OF CONDUIT - HEATER TO DOWN BLOWER
9. FULL LENGTH OF CONDUIT - HEATER TO DOWN BLOWER
10. FULL LENGTH OF CONDUIT - HEATER TO DOWN BLOWER
11. FULL LENGTH OF CONDUIT - HEATER TO DOWN BLOWER
12. FULL LENGTH OF CONDUIT - HEATER TO DOWN BLOWER
13. FULL LENGTH OF CONDUIT - HEATER TO DOWN BLOWER



**NOTES:**  
 1. SEE DRAWING FOR DIMENSIONS AND MATERIALS.  
 2. SEE DRAWING FOR DIMENSIONS AND MATERIALS.  
 3. SEE DRAWING FOR DIMENSIONS AND MATERIALS.  
 4. SEE DRAWING FOR DIMENSIONS AND MATERIALS.  
 5. SEE DRAWING FOR DIMENSIONS AND MATERIALS.  
 6. SEE DRAWING FOR DIMENSIONS AND MATERIALS.  
 7. SEE DRAWING FOR DIMENSIONS AND MATERIALS.  
 8. SEE DRAWING FOR DIMENSIONS AND MATERIALS.  
 9. SEE DRAWING FOR DIMENSIONS AND MATERIALS.  
 10. SEE DRAWING FOR DIMENSIONS AND MATERIALS.  
 11. SEE DRAWING FOR DIMENSIONS AND MATERIALS.  
 12. SEE DRAWING FOR DIMENSIONS AND MATERIALS.  
 13. SEE DRAWING FOR DIMENSIONS AND MATERIALS.

FANED - HEATER PERFORMANCE CURVES



Thompson Point r3  
 PORTLAND, ME, 04101

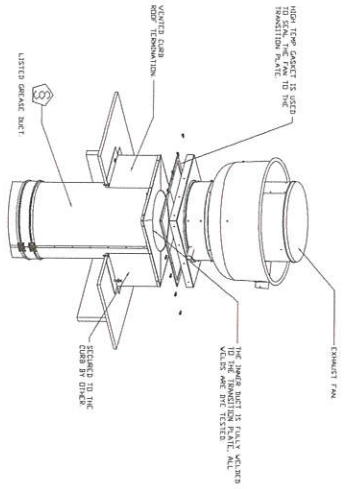
DATE: 1/3/2017  
 DWG#: 2802149  
 DRAWN BY: C-21  
 SCALE: 3/4" = 1'-0"  
 MASTER DRAWING

SHEET NO. 7

**CAPTIVE AIR**  
 MAINE OFFICE  
 www.captiveaire.com

PO Box 86, 179 South Rd., Topsham, ME, 04460 PHONE: (207) 795-2500 FAX: (207) 619-1519 (207) 227-5946 EMAIL: mgl21@captivemaine.com

NO.	REVISIONS



**GREASE DUCT SPECIFICATIONS:**  
 PROVIDE GREASE DUCT EQUAL TO CAPTIVEAIRE SYSTEMS MODEL "DW" ROUND 20 GAUGE 430 STAINLESS STEEL DUCTWORK. MODEL "DW" IS LISTED TO UL-1978 AND IS INSTALLED USING "V" CLAMP LOCKING CONNECTIONS SEALED WITH 3M FIRE BARRIER 2000 PLUS. MODEL "DW" DOES NOT REQUIRE WELDING PROVIDING IT HAS BEEN INSTALLED PER THE MANUFACTURERS INSTALLATION GUIDE.  
 PROVIDE RATED ACCESS DOORS AT EVERY CHANGE IN DIRECTION AND EVERY 12" ON CENTER PER MANUFACTURERS LISTING MODEL "DW" HORIZONTAL RUNS LESS THAN 75 FT. CAN BE SLOPED 1/16" PER 12", HORIZONTAL RUNS MORE THAN 75 FT. CAN BE SLOPED 3/16" PER 12". DUCT SHOULD BE SLOPED AS MUCH AS POSSIBLE TO REDUCE THE CHANCE OF GREASE ACCUMULATION IN HORIZONTAL RUNS.  
 IF THE DUCT IS WITHIN 18 INCHES OF COMBUSTIBLE MATERIAL, PROVIDE UL-2221 LISTED DOUBLE WALL GREASE DUCT EQUAL TO CAPTIVEAIRE SYSTEMS MODEL "DW"- 2R, 3R, DR 32" ROUND 20 GAUGE 430 STAINLESS INNER DUCT INSULATED WITH A 24 GAUGE 430 STAINLESS OUTER SHELL.

**CUSTOMER APPROVAL TO MANUFACTURE:**

Approved on date _____	<input type="checkbox"/>
Approved with no exception from _____	<input type="checkbox"/>
Signature _____	<input type="checkbox"/>
Date _____	<input type="checkbox"/>

NO.	DATE	REVISIONS



PO Box 86, 179 South Rd., Topsheld, ME. 04490 PHONE: (207) 796-2500 FAX: (515) 227-5546 EMAIL: mc21@capiv-air.com www.capiv-air.com

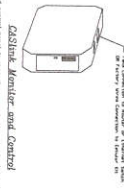
Thompson Point r3  
 PORTLAND, ME, 04101

DATE: 1/3/2017  
 DRAWN BY: E308149  
 DRAWN BY: FFC-21  
 SCALE: 3/4" = 1'-0"  
 MASTER DRAWING

SHEET NO. 8



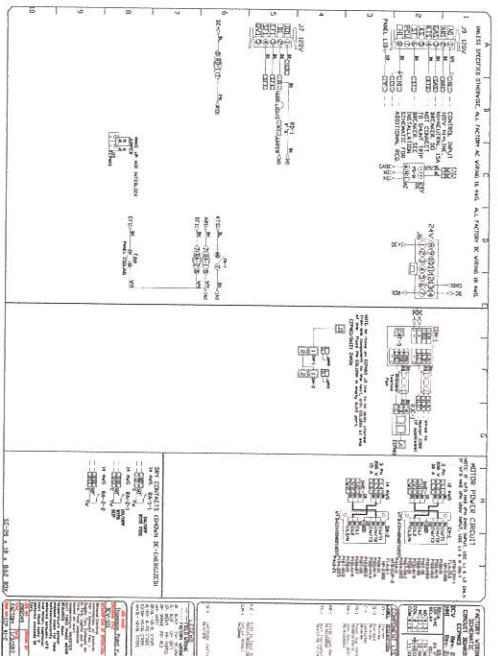
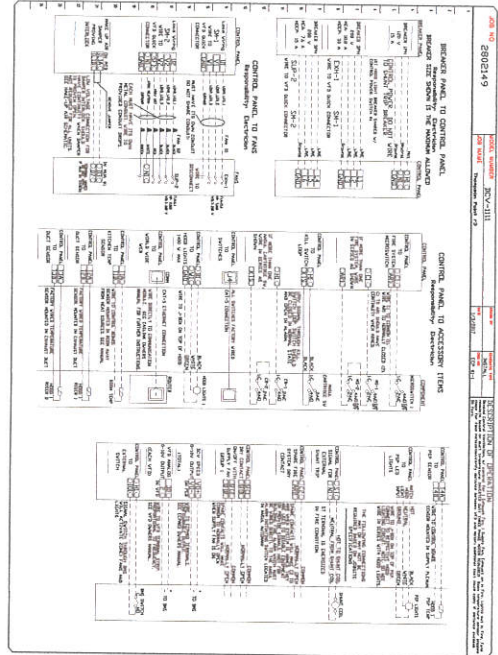




Gasline Monitor and Control  
 This equipment is used to monitor gas line pressure and control gas flow to the burner. It is used in conjunction with the gas control valve and the gas safety shutoff valve.

**OPTIONAL AND CONTROL ACCESS LIST**

Part Number	Description	Part Number	Description
100-1000	Gas Control Valve	100-1000	Gas Control Valve
100-1001	Gas Safety Shutoff Valve	100-1001	Gas Safety Shutoff Valve
100-1002	Gas Line Pressure Regulator	100-1002	Gas Line Pressure Regulator
100-1003	Gas Line Pressure Switch	100-1003	Gas Line Pressure Switch
100-1004	Gas Line Pressure Transducer	100-1004	Gas Line Pressure Transducer
100-1005	Gas Line Pressure Sensor	100-1005	Gas Line Pressure Sensor
100-1006	Gas Line Pressure Controller	100-1006	Gas Line Pressure Controller
100-1007	Gas Line Pressure Monitor	100-1007	Gas Line Pressure Monitor
100-1008	Gas Line Pressure Alarm	100-1008	Gas Line Pressure Alarm
100-1009	Gas Line Pressure Relay	100-1009	Gas Line Pressure Relay
100-1010	Gas Line Pressure Switch	100-1010	Gas Line Pressure Switch
100-1011	Gas Line Pressure Transducer	100-1011	Gas Line Pressure Transducer
100-1012	Gas Line Pressure Sensor	100-1012	Gas Line Pressure Sensor
100-1013	Gas Line Pressure Controller	100-1013	Gas Line Pressure Controller
100-1014	Gas Line Pressure Monitor	100-1014	Gas Line Pressure Monitor
100-1015	Gas Line Pressure Alarm	100-1015	Gas Line Pressure Alarm
100-1016	Gas Line Pressure Relay	100-1016	Gas Line Pressure Relay
100-1017	Gas Line Pressure Switch	100-1017	Gas Line Pressure Switch
100-1018	Gas Line Pressure Transducer	100-1018	Gas Line Pressure Transducer
100-1019	Gas Line Pressure Sensor	100-1019	Gas Line Pressure Sensor
100-1020	Gas Line Pressure Controller	100-1020	Gas Line Pressure Controller
100-1021	Gas Line Pressure Monitor	100-1021	Gas Line Pressure Monitor
100-1022	Gas Line Pressure Alarm	100-1022	Gas Line Pressure Alarm
100-1023	Gas Line Pressure Relay	100-1023	Gas Line Pressure Relay
100-1024	Gas Line Pressure Switch	100-1024	Gas Line Pressure Switch
100-1025	Gas Line Pressure Transducer	100-1025	Gas Line Pressure Transducer
100-1026	Gas Line Pressure Sensor	100-1026	Gas Line Pressure Sensor
100-1027	Gas Line Pressure Controller	100-1027	Gas Line Pressure Controller
100-1028	Gas Line Pressure Monitor	100-1028	Gas Line Pressure Monitor
100-1029	Gas Line Pressure Alarm	100-1029	Gas Line Pressure Alarm
100-1030	Gas Line Pressure Relay	100-1030	Gas Line Pressure Relay



**System Design Verification (SDV)**

If ordered, GAS Service will perform a System Design Verification (SDV) once all equipment has had a complete start up per the Operation and Installation Manual. Typically, the SDV will be performed after all inspections are complete.

Any field related discrepancies that are discovered during the SDV will be brought to the attention of the general contractor and corresponding trades on site. These discrepancies will be documented and forwarded to the appropriate sales office. If GAS Service has to resolve a discrepancy that is a field issue, the general contractor will be notified and billed for the work. Should a return trip be required due to any field related discrepancy that cannot be resolved during the SDV, there will be additional trip charges.

During the SDV, GAS Service will address any discrepancy that is the fault of the manufacturer. Should a return trip be required, the general contractor and appropriate sales office will be notified. There will be no additional charges for manufacturer appropriate discrepancies.

**REVISIONS**

NO.	DESCRIPTION



MAINE OFFICE  
 www.captiveaire.com  
 PO Box 96, 179 South Rd., Topsham, ME 04450 PHONE: (207) 796-2596 FAX: (207) 796-2596 EMAIL: reg12@maine.captiveaire.com

Thompson Point r3  
 PORTLAND, ME, 04101

DATE: 1/3/2017  
 DWG#: 2802-419  
 DRAWN BY: H-C-21  
 SCALE: 3/4" = 1'-0"  
 MASTER DRAWING

SHEET NO. 10

Item #20