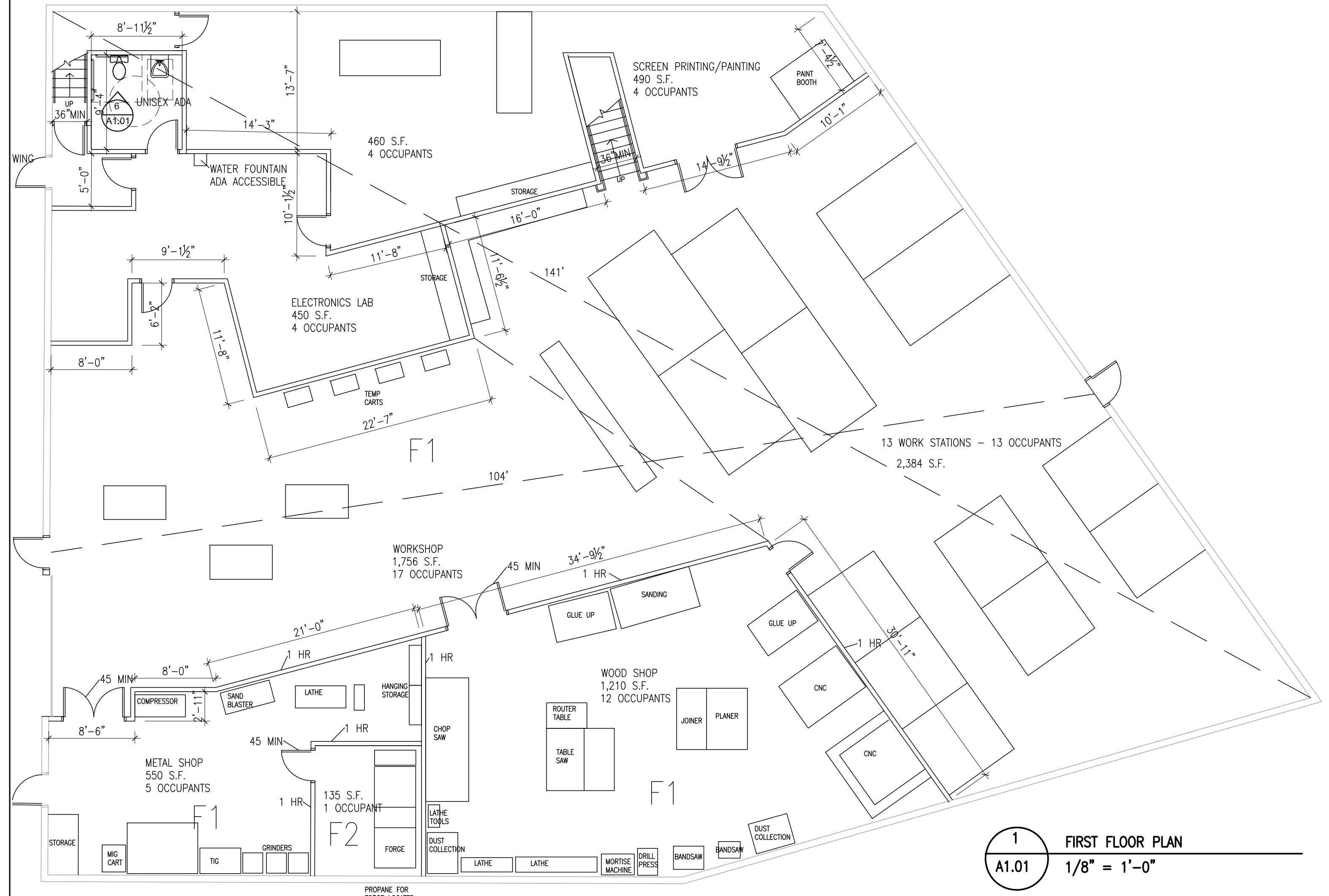
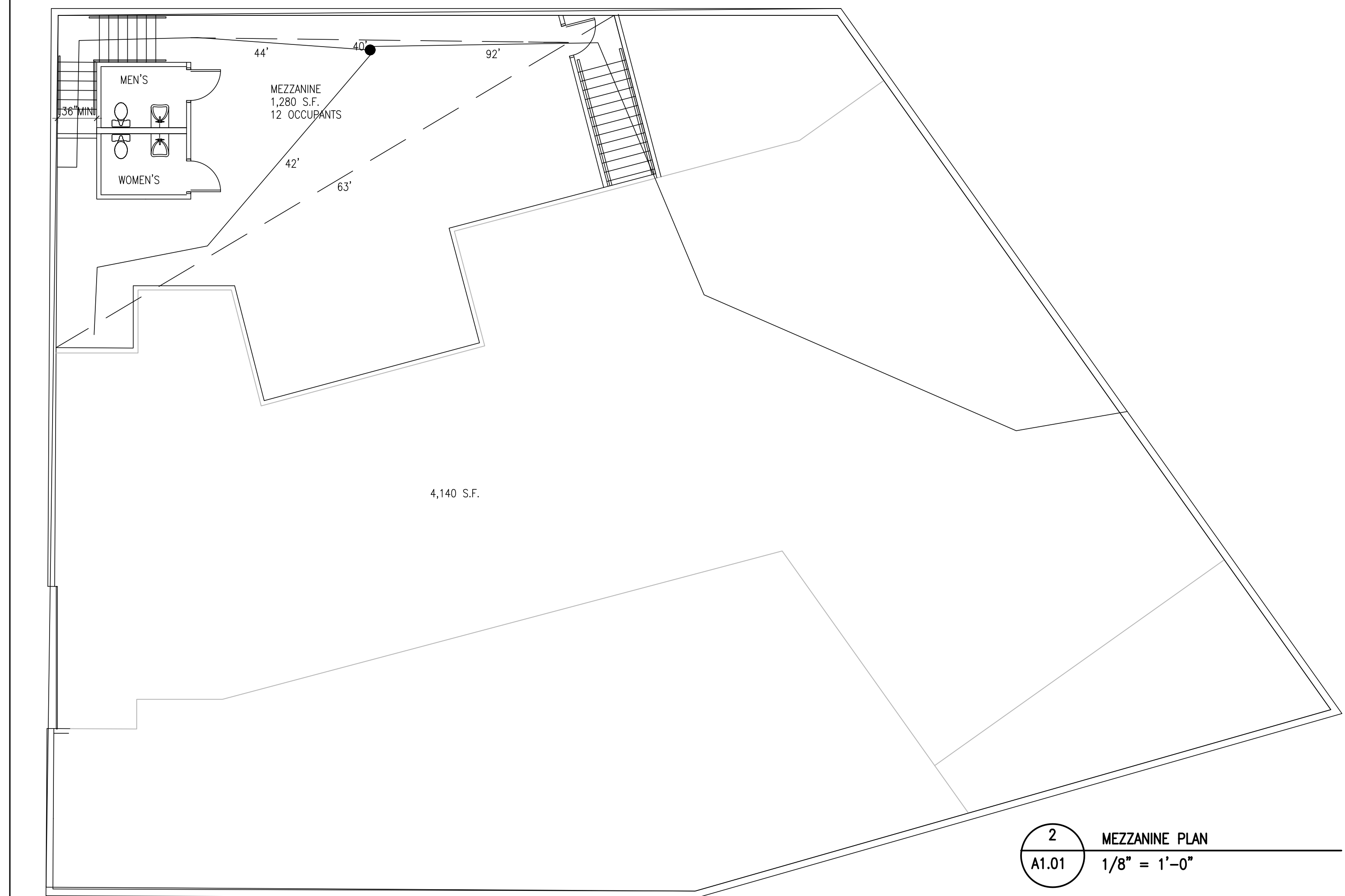


- NOTES:
1. ALL DOORS IN 1 HR RATED WALLS TO BE 45 MIN
 2. HARDWARE ON ALL EXIT DOORS TO BE EXIT DEVICE



1 FIRST FLOOR PLAN
A1.01 1/8" = 1'-0"



2 MEZZANINE PLAN
A1.01 1/8" = 1'-0"

IBC ANALYSIS
 FOOTPRINT - 8,500 S.F.
 CONSTRUCTION TYPE 5B
 UNSPRINKLED (UNDER 9,000 S.F.) IBC 2009 TABLE 503

OCCUPANT LOAD -
 WORK STATION AREA - BY STATION - 13 OCCUPANTS IBC 2009 TABLE 1004.1.1
 WORKSHOP & LAB AREAS S.F./100
 4+12+5 +1+17+4+4+12 = 59
 13 +60 = 72 OCCUPANTS
 36 MEN, 36 WOMEN

EXISTING BUILDING - ALTERATIONS - LEVEL 3
 CHANGE OF OCCUPANCY - VACANT TO INDUSTRIAL (F1) & (F2)
 F1 - WOOD & METAL SHOP F2 - FOUNDRY IBC 2009 306.2
 F2 IS ACCESSORY TO F1 (135 S.F./1760 S.F. = 7.6%) IBC 2009 508.2
 ANY CLASSES WITH STUDENTS UNDER THE 12TH GRADE
 WILL BE KEPT TO A MAX OF 5 STUDENTS SO NO E USE IBC 2009 305.4
 COMBUSTIBLE STORAGE - REFER TO NFPA ANALYSIS IBC 2009 413.1
 HAZARDOUS MATERIALS - REFER TO NFPA ANALYSIS IBC 2009 SECTION 414
 APPLICATION OF FLAMMABLE FINISHED - REFER TO NFPA ANALYSIS IBC 2009 SECTION 416

MEZZANINE -
 CLEAR HEIGHT BELOW AND ABOVE 7' IBC 2009 505.1
 MEZZ - 1,280 S.F. - LOCATED IN SPACE OF 4,140 S.F. IBC 2009 505.2
 4,140 S.F./3 = 1,380 S.F. > 1,280 S.F.
 2 EXITS FROM MEZZ IBC 2009 1014.3
 COMMON PATH FROM MEZZ - 75' W/OUT SPRINKLER IBC 2009 505.4 EX. 2
 MEZZ CAN BE ENCLOSED

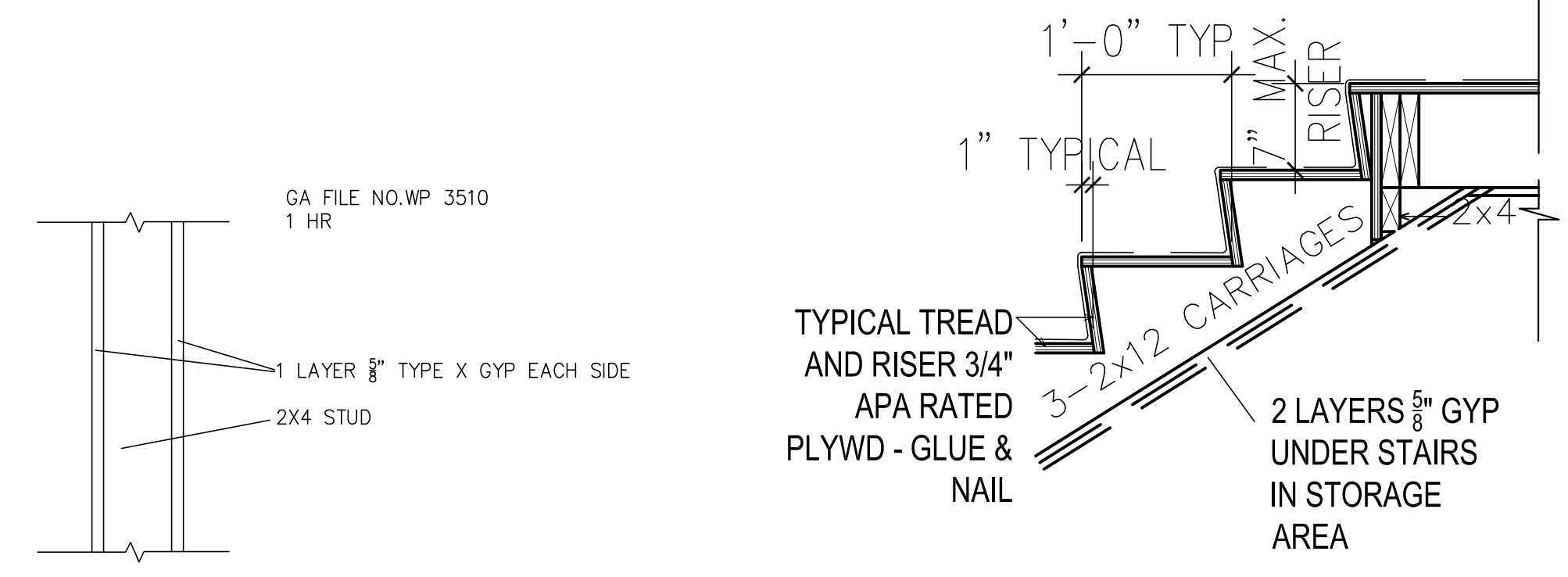
FIRE RATING - NONE REQUIRED FOR 5B IBC 2009 TABLE 601

INTERIOR FINISHES - EXIT ENCLOSURES/PASSAGES-A
 ROOMS-C IBC 2009 TABLE 803.9

FIRE PROTECTION SYSTEM - REFER TO NFPA ANALYSIS IBC 2009 901.2
 EMERGENCY LIGHTING REQUIRED

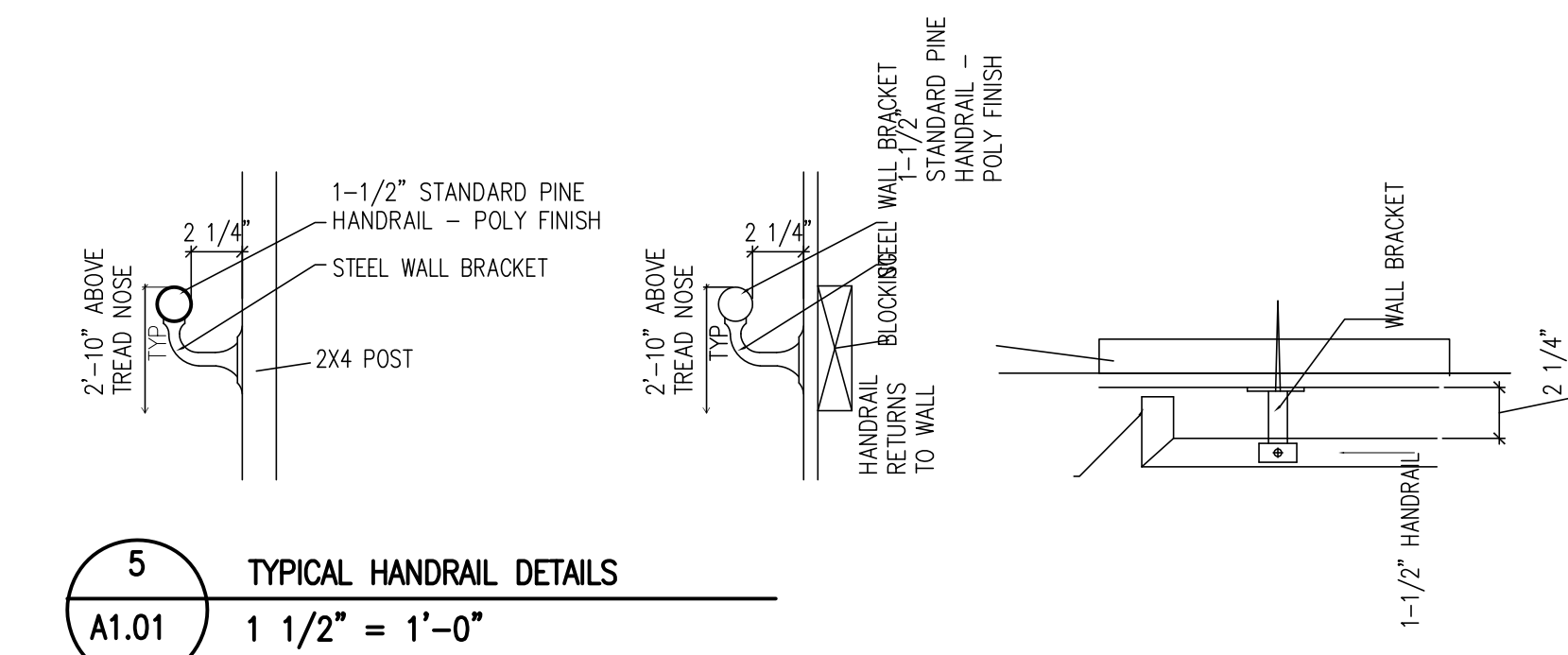
MEANS OF EGRESS - COMMON PATH <75' W/OUT SPRINKLER IBC 2009 1014.3
 EXIT SEPARATION > OR = 1/2 DIAGONAL IBC 2009 1015.2
 EXIT ACCESS TRAVEL DISTANCE
 F1 - 200' W/OUT SPRINKLER IBC 2009 TABLE 1016.1
 F2 - 300' W/OUT SPRINKLER

UPC - INDUSTRIAL
 MEN - 2 TOILETS, 1 URINAL
 WOMEN - 3 TOILETS
 1 WATER FOUNTAIN
 SUBMITTING FOR WAIVER ON FIXTURE COUNT BASED ON
 STANDARD MAX OCCUPANCY OF 20 AND OCCUPANCY AT 40 OR
 ABOVE ONLY SEVERAL TIMES A YEAR

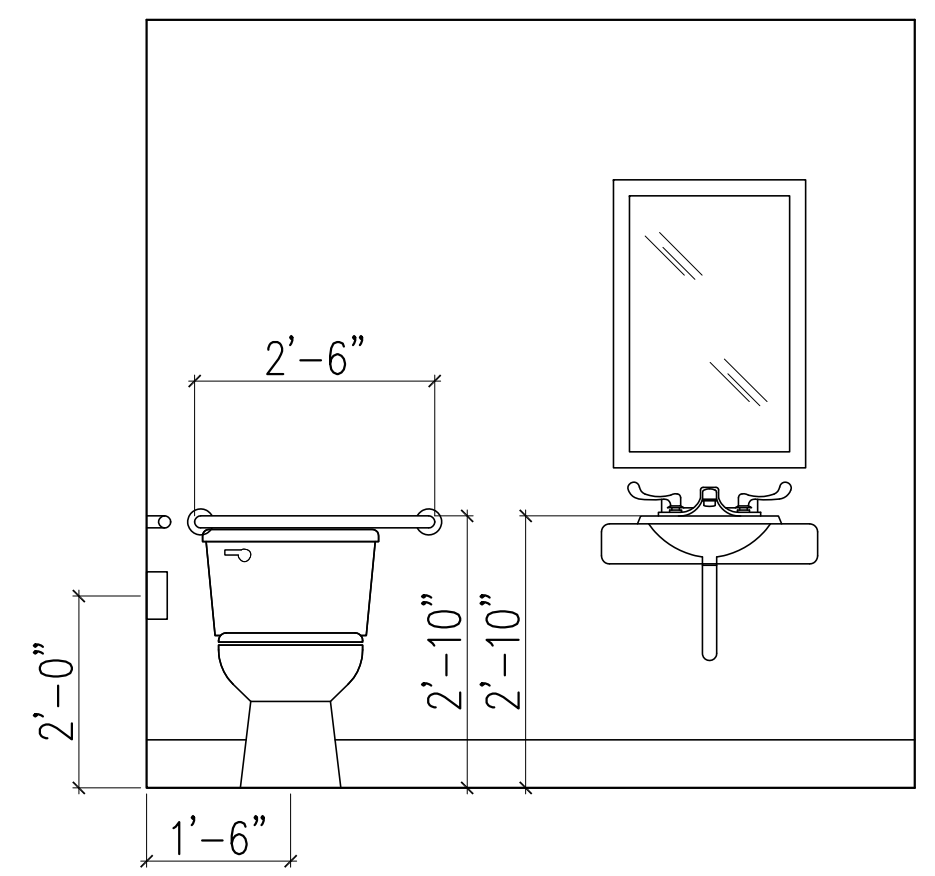


3 TYPICAL WALL TYPE
A1.01 1 1/2" = 1'-0"

4 TYPICAL STAIR DETAIL
A1.01 1" = 1'-0"



5 TYPICAL HANDRAIL DETAILS
A1.01 1 1/2" = 1'-0"



6 ADA BATHROOM CLEARANCES
A1.01 1/2" = 1'-0"

Prepared For:

Consultant:

Architect:
ARCHETYPE
 48 Union Wharf Portland, Maine 04101
 (207) 772-6022 Fax (207) 772-4056

Project:
OPEN BENCH
 10 THOMPSON'S POINT
 PORTLAND, ME

Revisions:	SUBMISSION TO CITY
7-15-2016	RESPONSES TO CITY
11-8-2016	

Date: 6-29-2016
 Scale: AS NOTED
FLOOR PLAN & DETAILS

A1.01