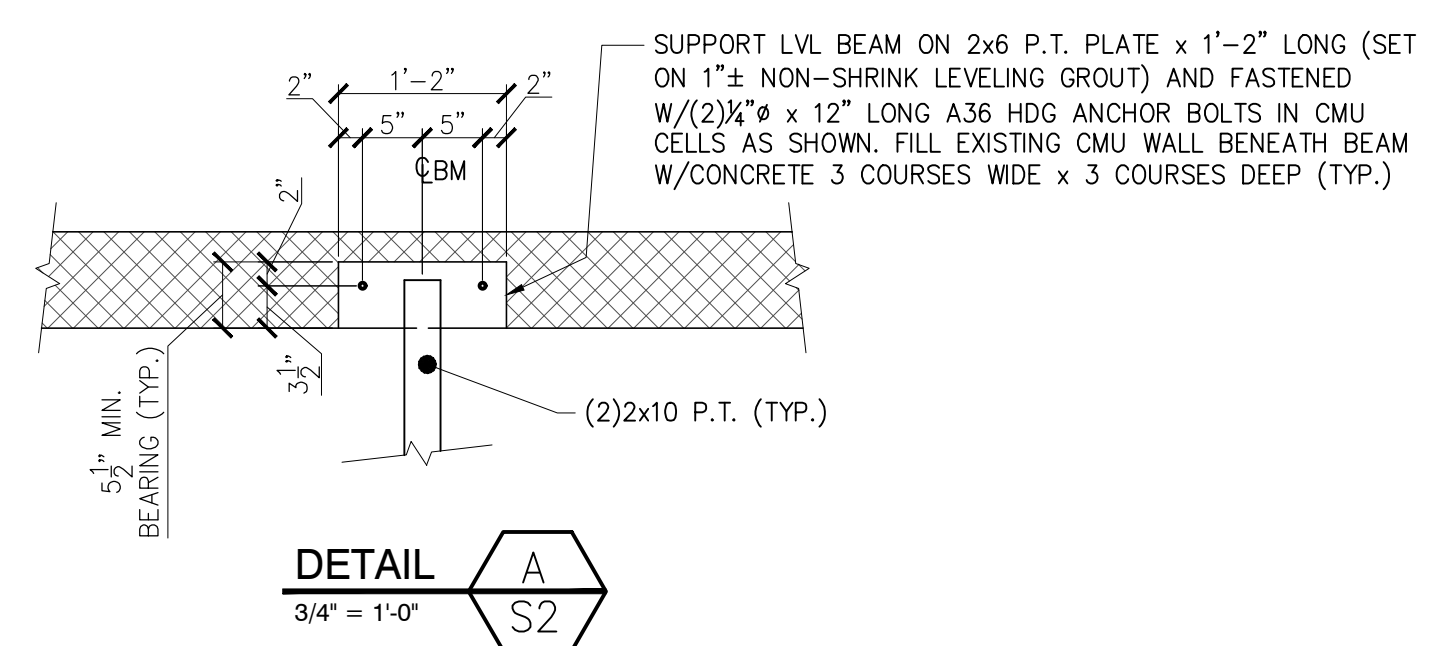


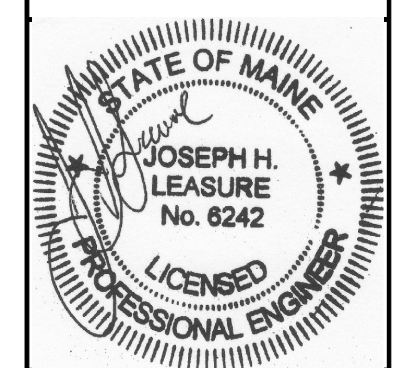
**MEZZANINE FLOOR FRAMING PLAN**

1/4" = 1'-0"

- NOTES:
- SEE GENERAL NOTES ON DWG S1.
  - "E" INDICATES: EXISTING CONDITIONS, OR MEMBERS.
  - "TYP." INDICATES: TYPICAL (ALSO SEE GENERAL NOTE #5).
  - "V.I.F." INDICATES: G.C. SHALL "VERIFY IN FIELD" EXISTING DIMENSIONS, ELEVATIONS, OR CONDITIONS INDICATED AND REPORT ANY DISCREPANCIES TO THE ENGINEER.
  - "U.O.N." INDICATES: UNLESS OTHERWISE NOTED.
  - HSS3x3x1/4 TUBE STEEL COLUMNS SHALL BE FASTENED TO BASE PLATE (INDICATED ON PLAN) W/1/4" FILLET WELD ALL AROUND AND SHALL HAVE STEEL CAP PLATES 1/2x(BEAM WIDTH)x 1'-0" W/(4)3/8" A325 HS BOLTS IN 1/8" HOLES AT BM GA (TYP.)
  - HOLD TOP OF FLUSH FRAMED LVL BEAMS AND STEEL BEAM DOWN 1/2" MIN. (OR AS SPECIFIED) FROM TOP OF JOIST TO ALLOW FOR JOIST SHRINKAGE. DO NOT BUTT JOINT (OR SEAM) FLOOR SHEATHING OVER WIDTH OF BEAM (TYP.).
  - PROVIDE SOLID 2x10 BLOCKING BETWEEN JOISTS AT 8'-0" MAX. INTERVALS PLUS OVER BEARING WALLS. STAGGER AND END NAIL W/(3)16d NAILS AT EACH END OR (3)10GA x 5" LONG WOOD SCREWS AT DOUBLE 2x10 JOISTS (NOT SHOWN FOR CLARITY) (TYP.).



**L & L STRUCTURAL ENGINEERING SERVICES, INC.**  
 SIX O. STREET  
 SOUTH PORTLAND, MAINE 04106  
 PHONE: (207) 767-4830  
 FAX: (207) 799-5432  
 EMAIL: LLEASURE@LL-ENG.COM



rev.	date	description	designed by	checked by	scale	plot date	project #
0	07/08/16	FOR CONSTRUCTION	JHL	JHL			
1	07/13/16	GENERAL REVISIONS	JHL	JHL			

**BUILDING LOCATED AT**  
 10 THOMPSON POINT ROAD  
 PORTLAND, MAINE  
**BUILDING RENOVATION - INTERIOR RETROFIT**  
 MEZZANINE FLOOR FRAMING PLAN, SECTIONS, AND DETAILS

**S2**

THESE DRAWINGS HAVE BEEN DEVELOPED BY L&L STRUCTURAL ENGINEERING SERVICES, INC. FOR THE TITLED SET ONLY. THE DRAWINGS ARE THE SOLE PROPERTY OF L&L ENGINEERING SERVICES, INC. AND THEY SHALL NOT BE USED, LENT, COPIED OR ALTERED WITHOUT THE WRITTEN CONSENT OF L&L STRUCTURAL ENGINEERING SERVICES, INC.