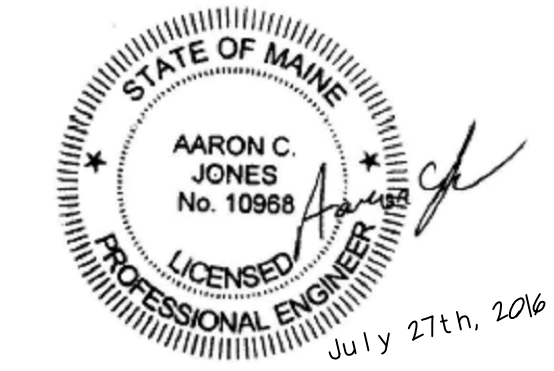
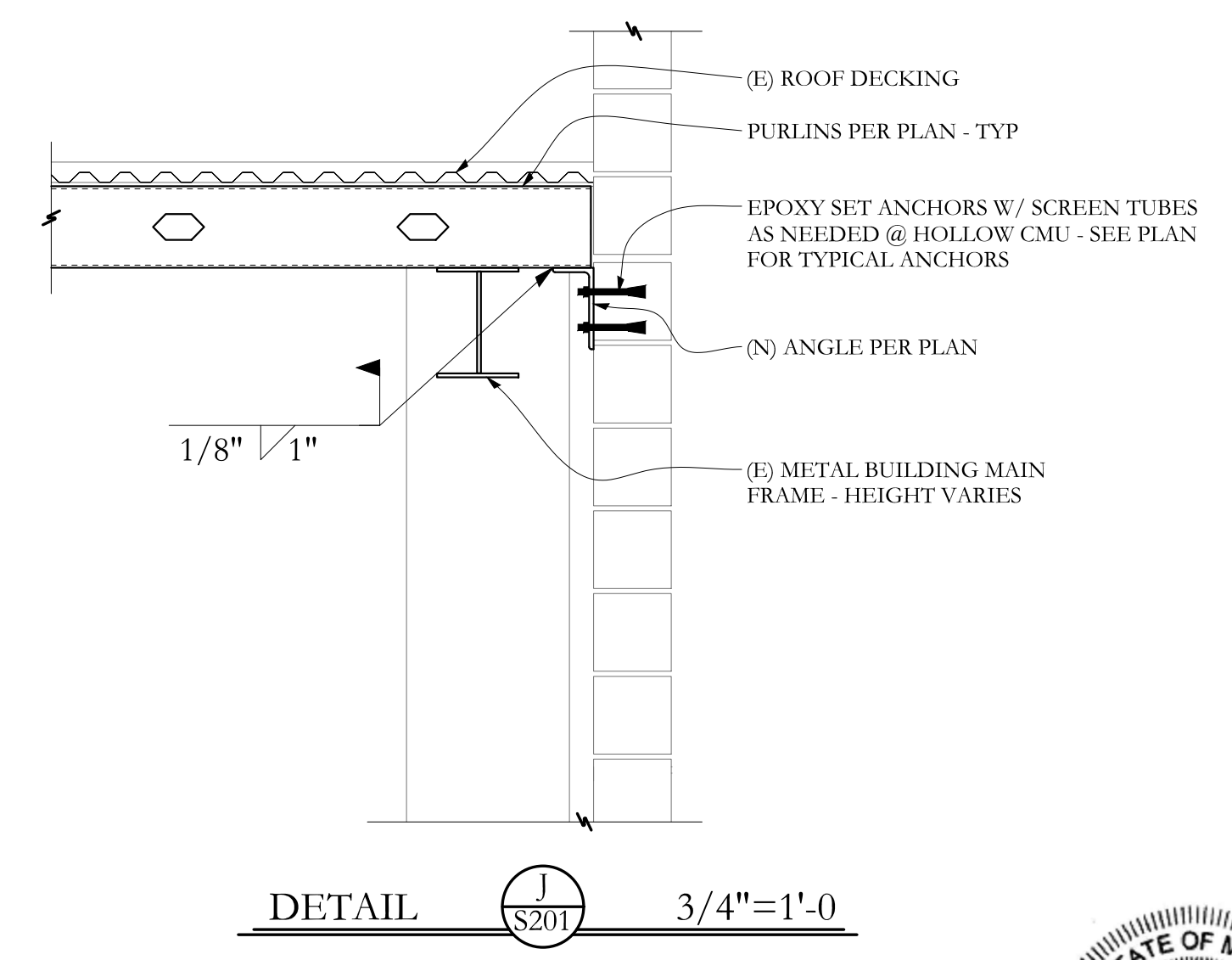
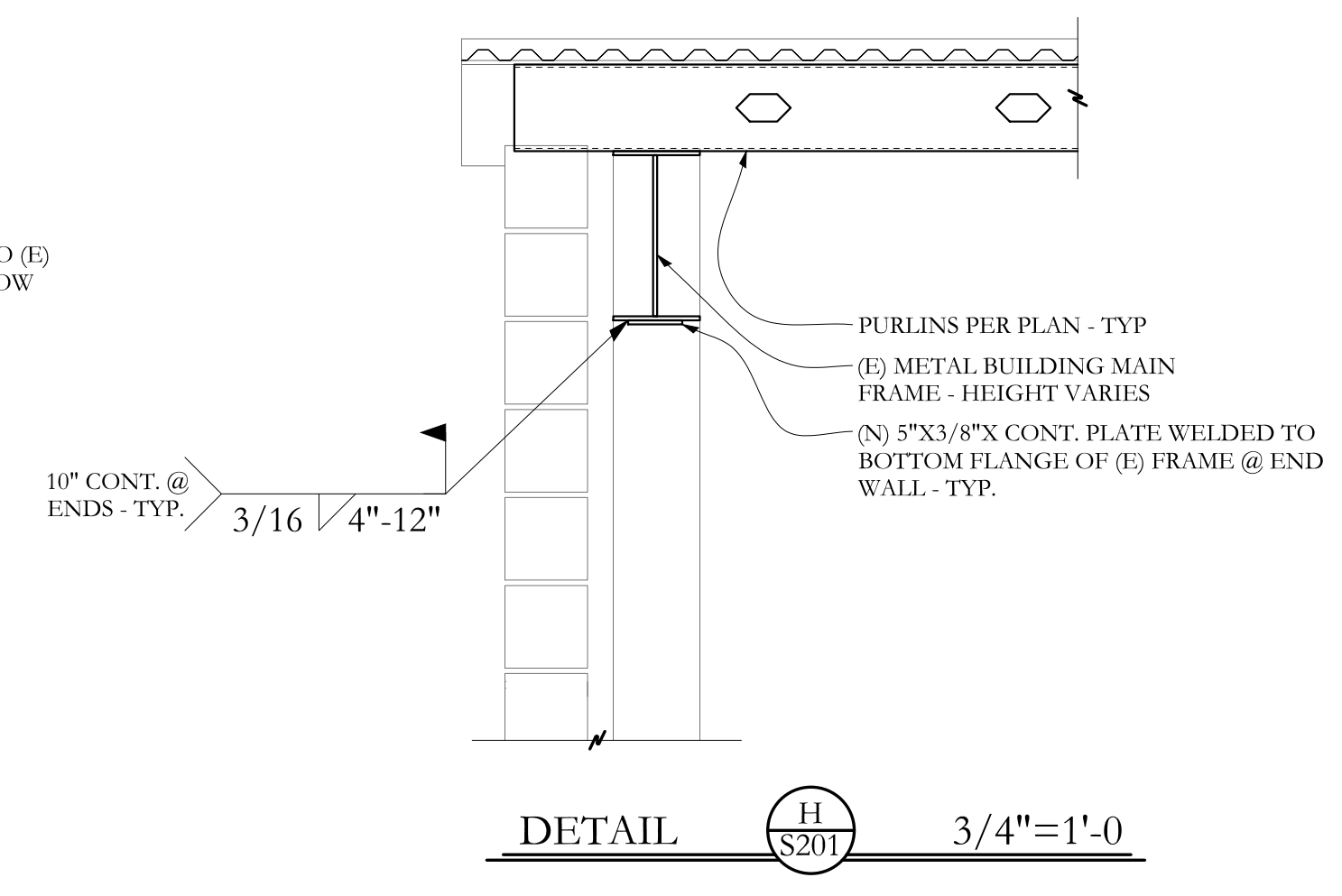
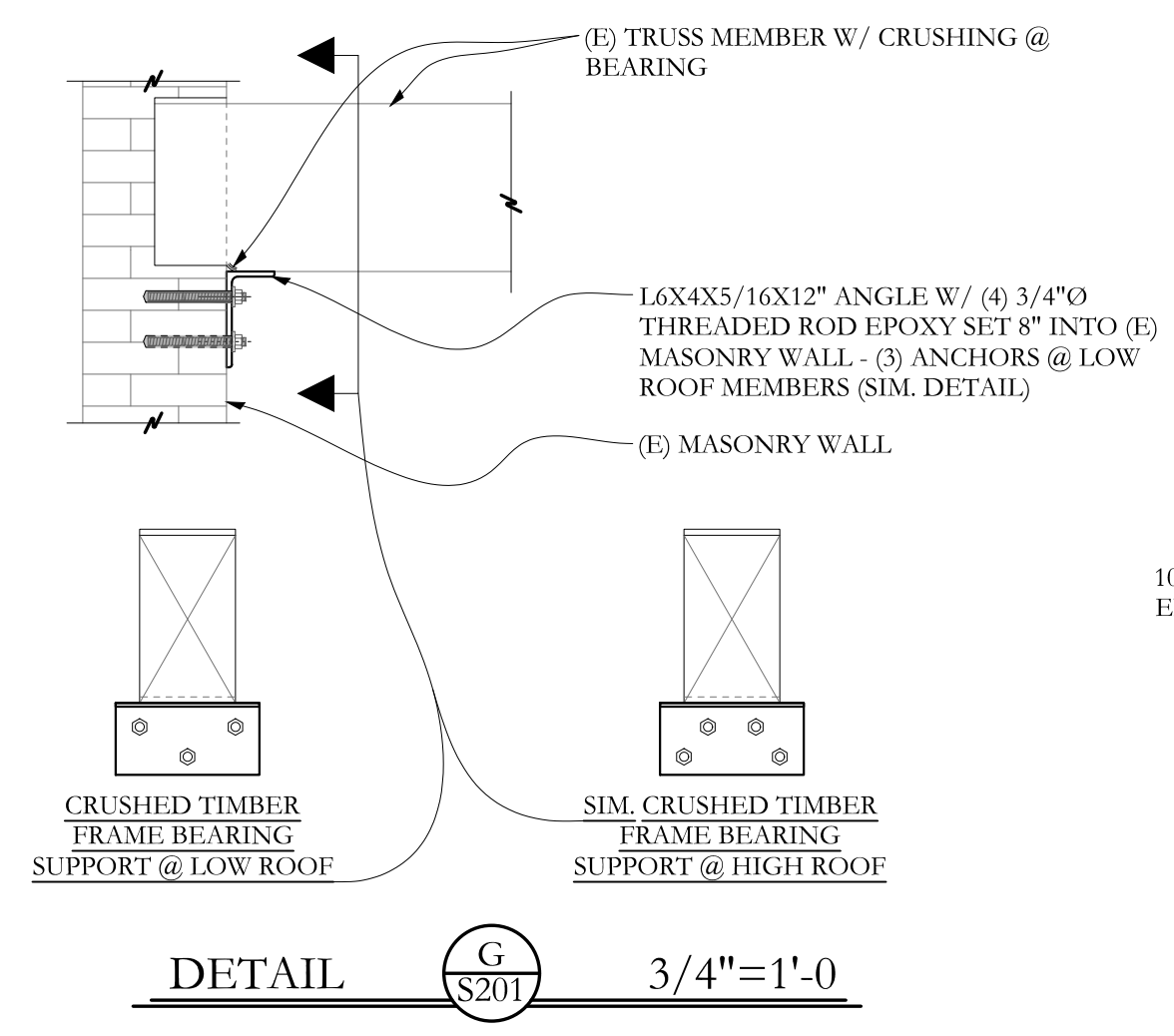
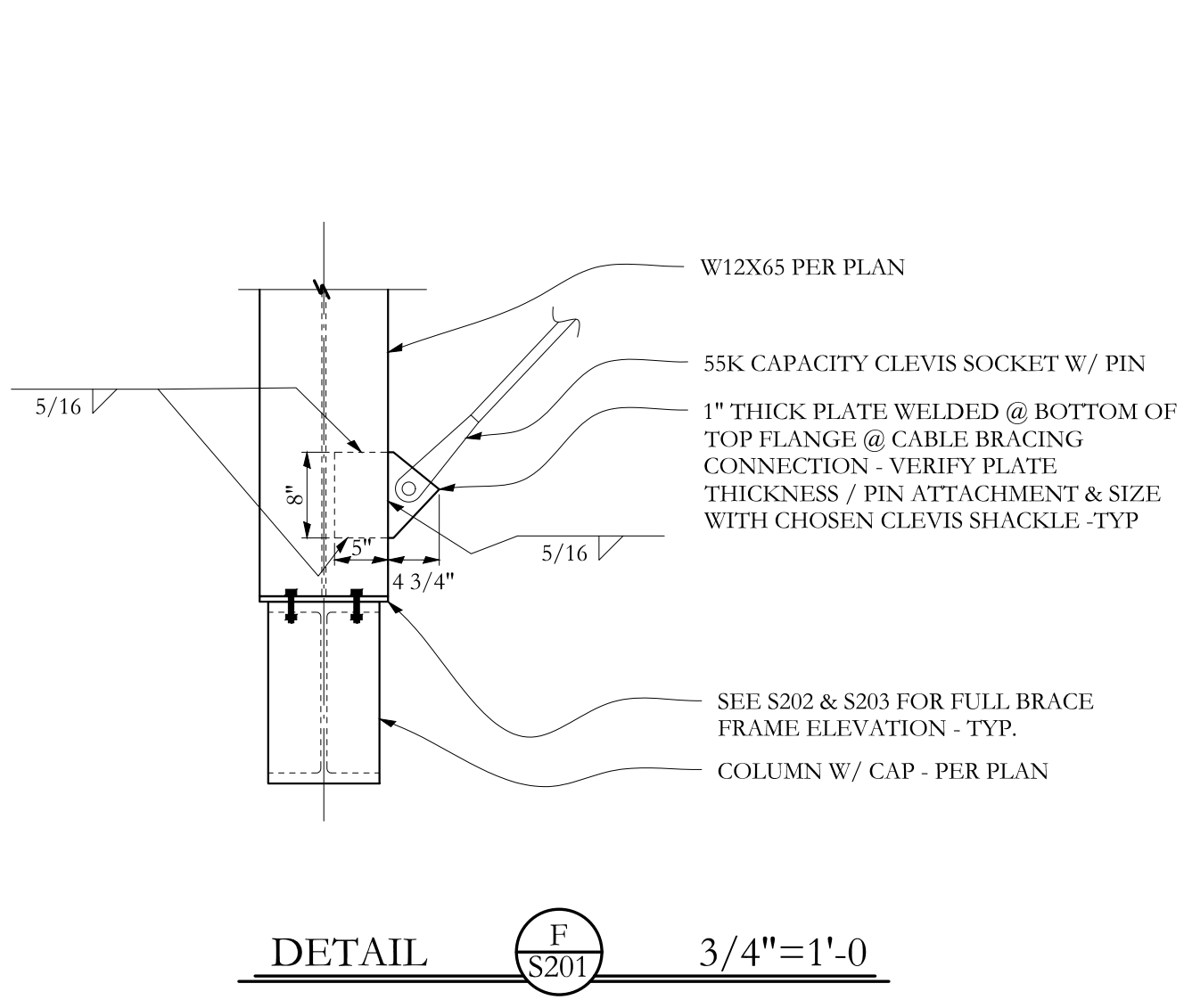


SECTION K 1/2"=1'-0



77 Oak Street  
 Portland, ME, 04101  
 P: 207-774-4614  
 F: 866-793-7835  
 www.structuralintegrity.com

**Structural Integrity**  
 Consulting Engineers

BUILD WITH CONFIDENCE  
 © 2016 Structural Integrity Consulting Engineers, Inc.

PROJECT NO. **15-0222**  
 PROJECT NAME **BRICK SOUTH, THOMPSON'S POINT**  
**Portland, Maine**

ISSUE DATE **07/27/2016**  
 SHEET SCALE **3/4"=1'-0"**

DRAWN BY **JCS**  
 SHEET TITLE **SECTIONS**

S201