

SOUTH ELEVATION



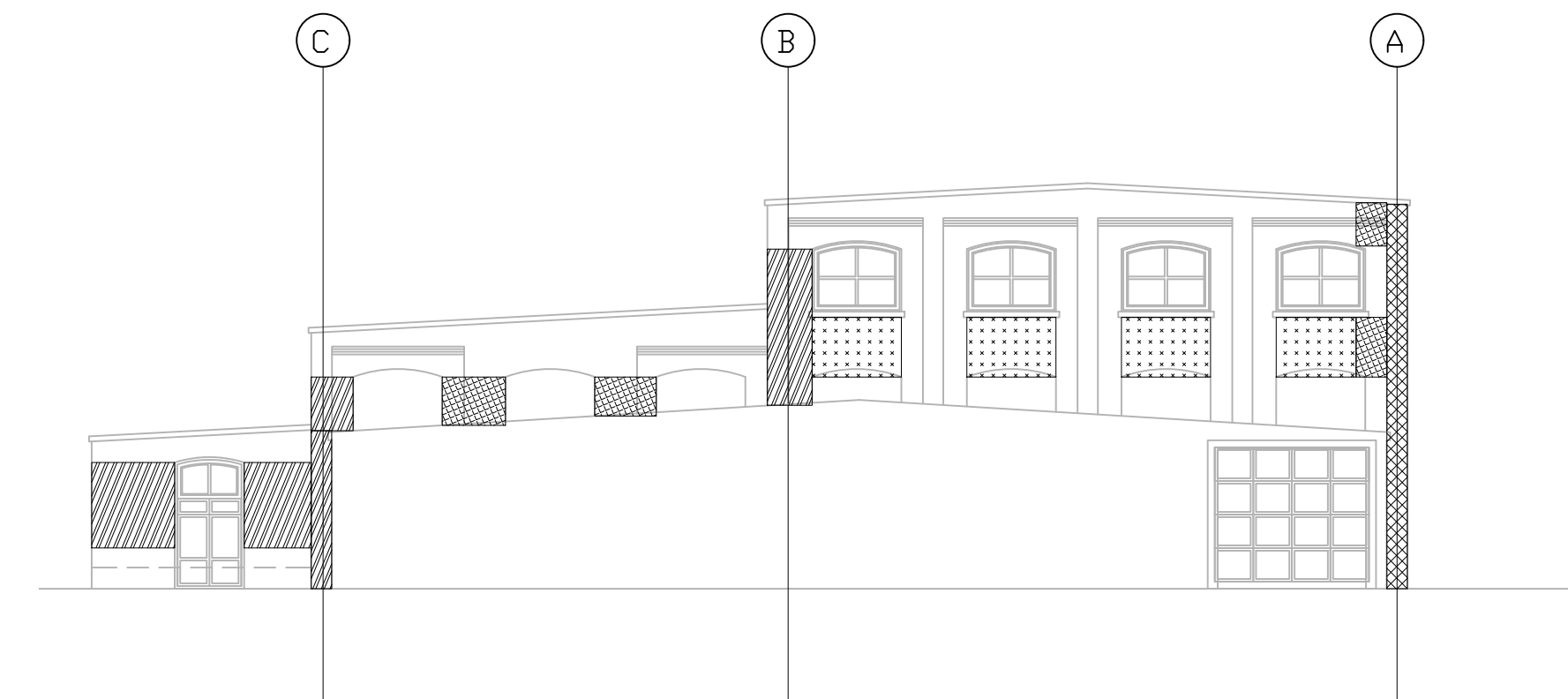
WEST ELEVATION

REPAIR AREA KEY	
[Pattern]	RE-POINT MASONRY
[Pattern]	REPLACE/ REBUILD MASONRY
[Pattern]	REPLACE/ REBUILD MASONRY AND KEY IN
[Pattern]	INSTALL WALL TIES (HELICAL/ STITCH)
[Pattern]	INSTALL WALL TIES AND RE-POINT MASONRY
[Pattern]	REPLACE/ REBUILD CMU

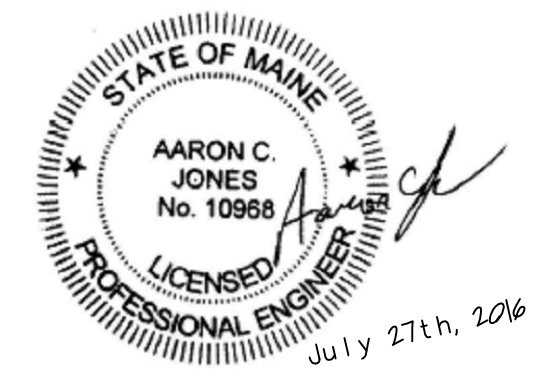
*INDICATED AREAS REPRESENT APPROXIMATE EXTENT OF REPAIRS NEEDED. FINAL QUANTITIES SHOULD BE VERIFIED IN FIELD.



NORTH ELEVATION



EAST ELEVATION



PROJECT NO.
15-0222
PROJECT NAME
**BRICK SOUTH, THOMPSON'S POINT
Portland, Maine**

DRAWN BY
JCS
SHEET TITLE
**BRICK REPAIR REFERENCE
ELEVATIONS**

ISSUE DATE
07/27/2016
SHEET SCALE
N.T.S.

S104

Structural Integrity
Consulting Engineers
77 Oak Street
Portland, ME, 04101
P: 207-774-4614
F: 866-793-7835
www.structuralintegrity.com
BUILD WITH CONFIDENCE
© 2016 Structural Integrity Consulting Engineers, Inc.