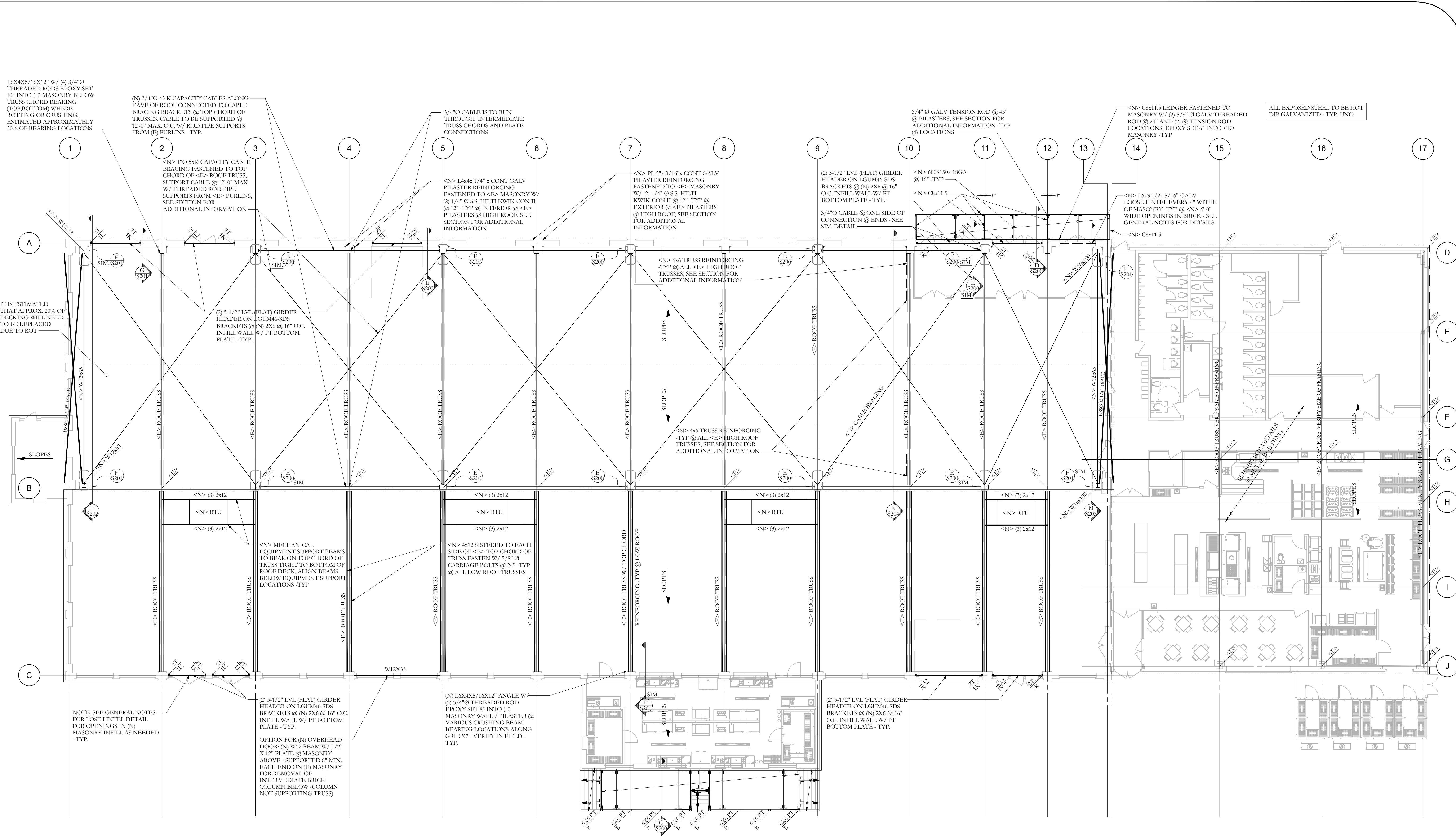


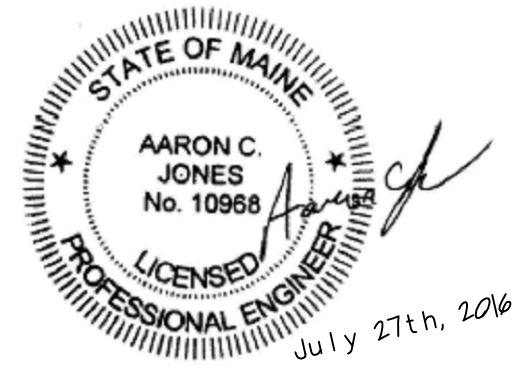
COPYRIGHT: Reuse or reproduction of the contents of this document is not permitted without written permission of Structural Integrity Consulting Engineers, Inc.



FRAMING PLAN SYMBOLS KEY	
	JOIST BEARING
	CONTINUOUS JOIST WITH INTERMEDIATE BEARING
	FLUSH FRAMED JOIST BEARING WITH HANGER
	EXISTING FRAMING MEMBER
	NEW FRAMING MEMBER
	FLUSH BEAM
	DROPPED BEAM

**ROOF FRAMING/ REINFORCING PLAN**  
SCALE 3/32"=1'-0"

- SEE S100 FOR GENERAL STRUCTURAL NOTES
- ALL EXPOSED STEEL TO BE HOT DIP GALVANIZED - TYP. UNO
- ALL STEEL TO HAVE (1) COAT OF SHOP PRIMER UNO.



77 Oak Street  
Portland, ME, 04101  
P: 207-774-4614  
F: 866-793-7835  
www.structuralintegrity.com  
BUILD WITH CONFIDENCE  
© 2016 Structural Integrity Consulting Engineers, Inc.

**Structural Integrity**  
Consulting Engineers

PROJECT NO. **15-0222**  
PROJECT NAME **BRICK SOUTH, THOMPSON'S POINT**  
Portland, Maine

DRAWN BY **JCS**  
ISSUE DATE **07/27/2016**  
SHEET TITLE **ROOF REINFORCING PLAN**  
SHEET SCALE **3/32"=1'-0"**

**S101**