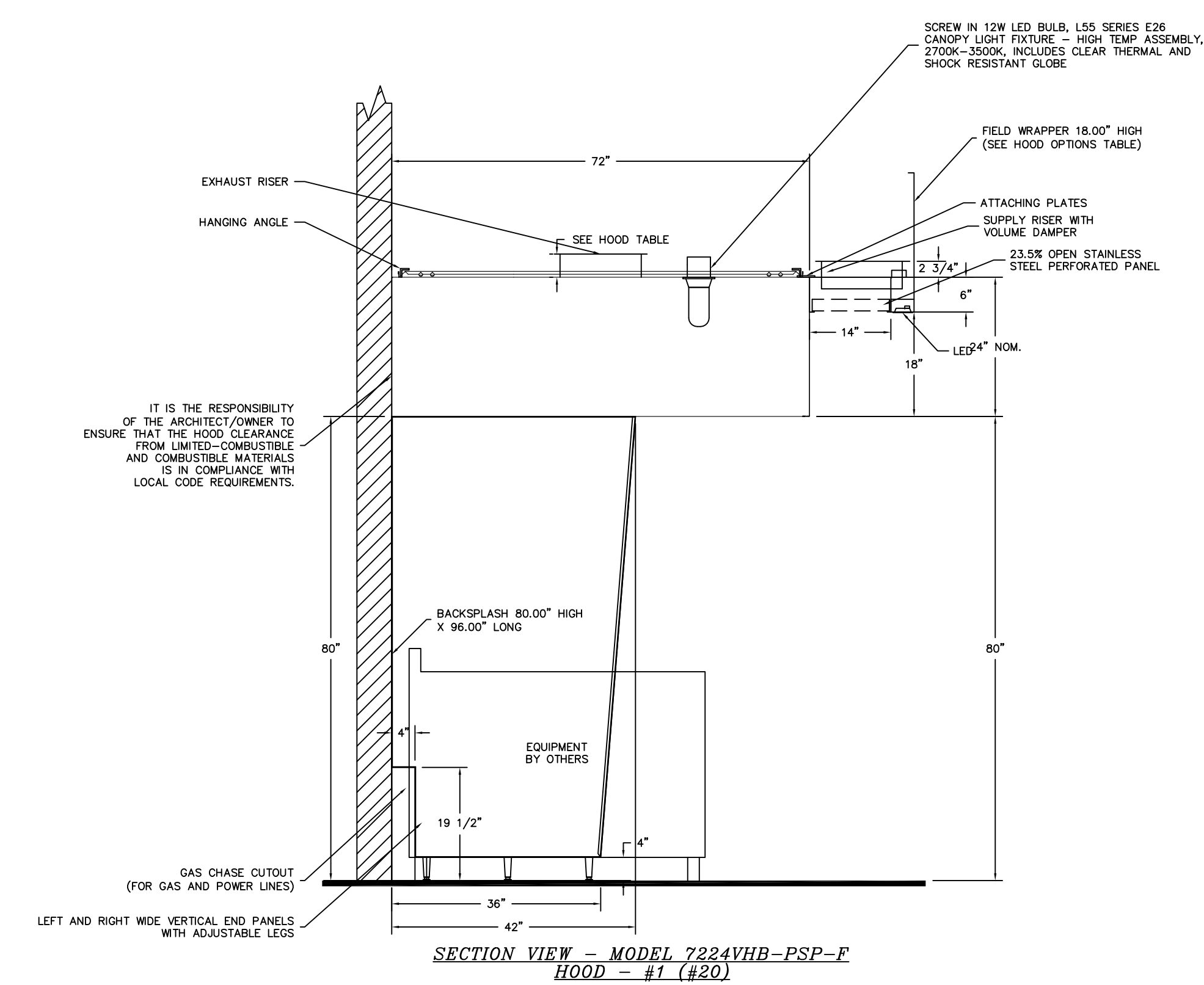
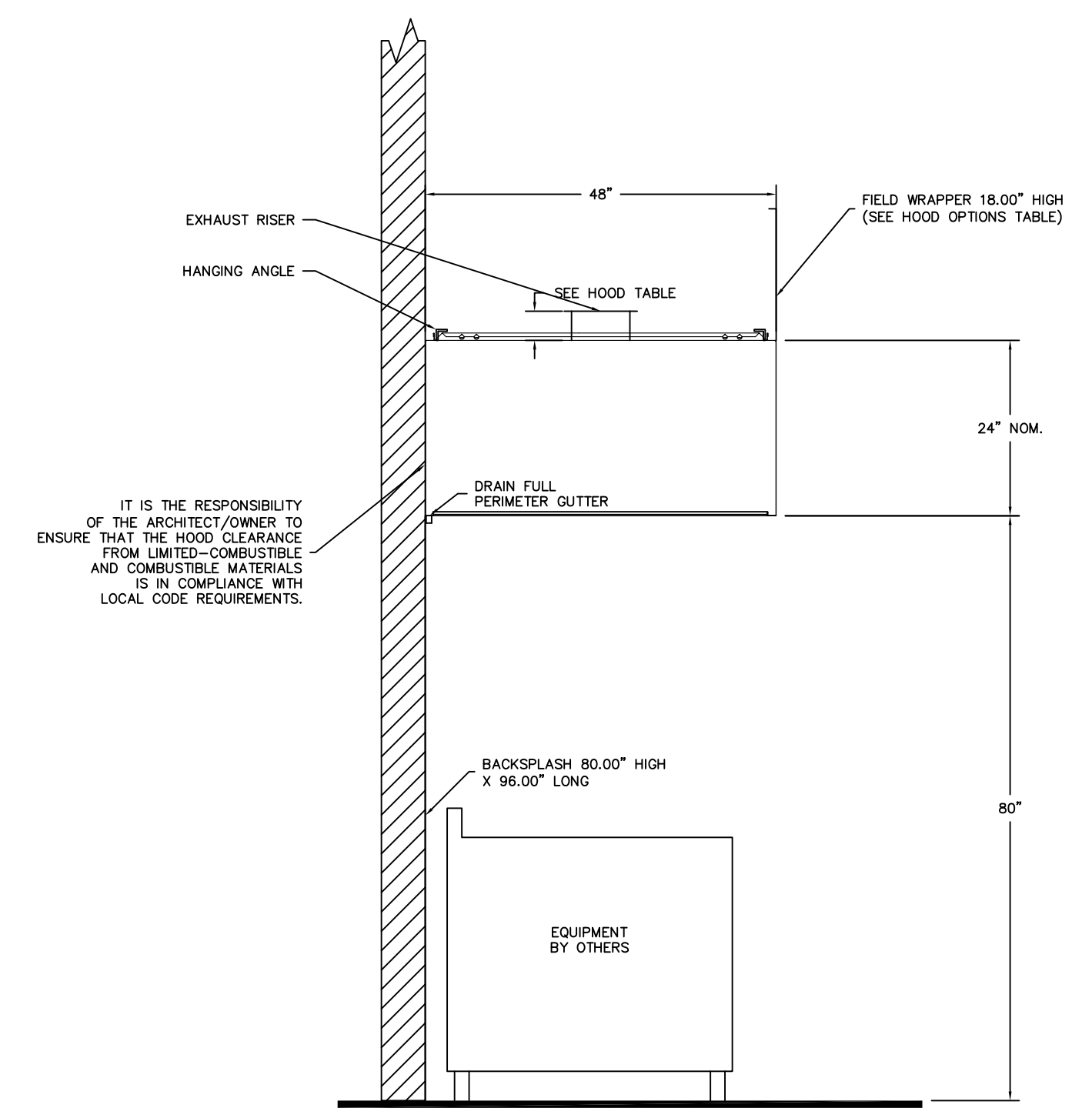


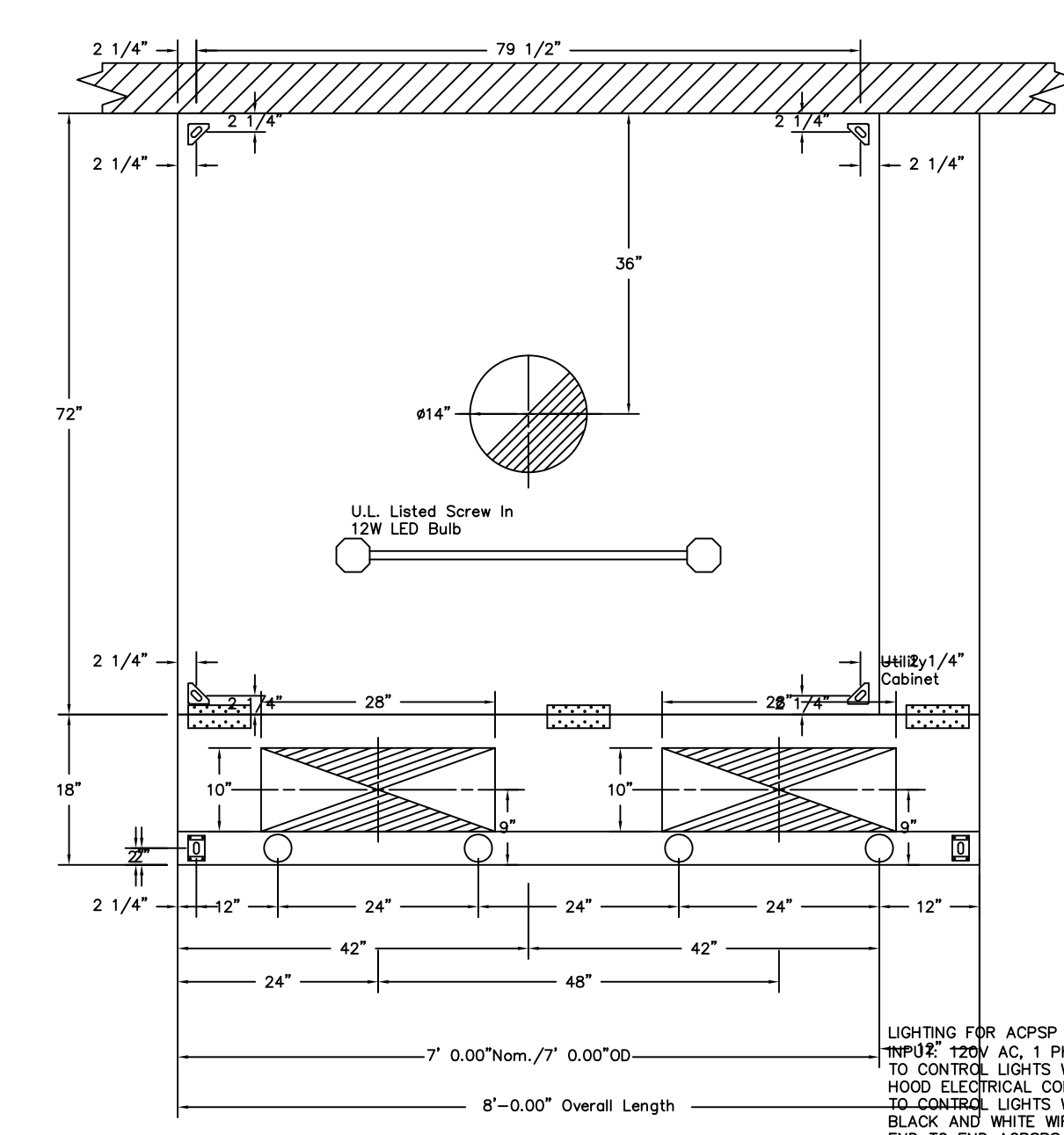
TJM CONSULTING, INC.
 273 MAIN STREET, SUITE 5
 YARMOUTH, MAINE 04096
 PHONE: (207) 215-4736
 E-MAIL: TOM@TJMCONSULTING.NET



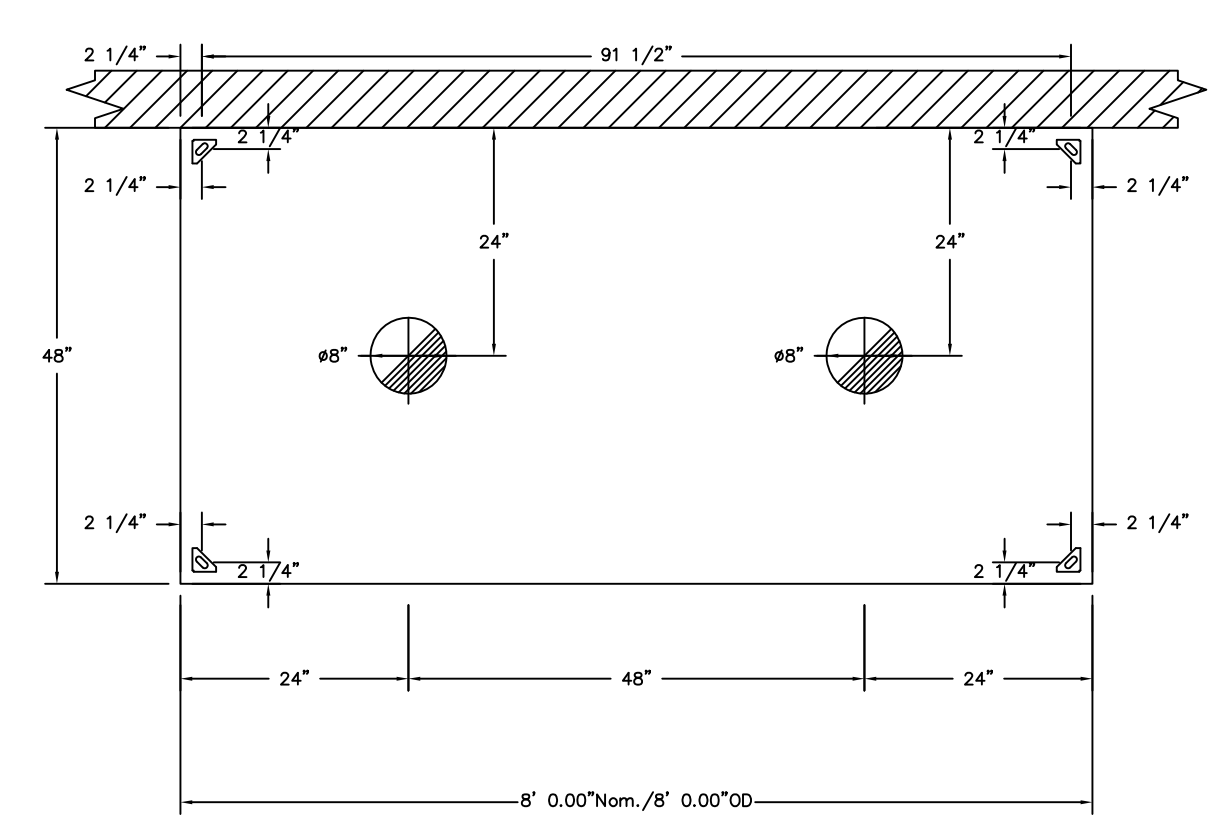
SECTION VIEW - MODEL 7224VHB-PSP-F
 HOOD - #1 (#20)



SECTION VIEW - MODEL 4824VHB-G
 HOOD - #4 (#56)



PLAN VIEW - Hood #1 (#20)
 7' 0.00" LONG 7224VHB-PSP-F



PLAN VIEW - Hood #4 (#56)
 8' 0.00" LONG 4824VHB-G

LIGHTING FOR ACPS Job # 2723392 - Hood #1
 120V AC, 1 Phase, 50/60Hz, 3.5 Watts per light.
 TO CONTROL LIGHTS WITH HOOD LIGHT SWITCH, WIRE PER HOOD ELECTRICAL CONTROL PANEL SCHEMATIC TO CONTROL LIGHTS WITH BUILDING LIGHT SWITCH, WIRE BLACK AND WHITE WIRE TO A 120VAC SERVICE. END TO END ACPS REQUIRE 120VAC FIELD WIRING FROM -> BOX TO -> BOX. REPLACE LIGHTS WITH LED LIGHTS ONLY.

REVISIONS	
NO.	DATE

www.captiveair.com
 www.captiveair.com
 PO Box 86, 173 South Rd., Topsham, ME 04480 PHONE: (207) 796-2590 FAX: (919) 227-5846 EMAIL: req2@captivair.com

CAPTIVE AIR
 MAINE OFFICE

Thompson Point r1
 PORTLAND, ME, 04101

DATE: 7/22/2016
 DWG.#: 2723392
 DRAWN BY: BFC-21
 SCALE: 3/4" = 1'-0"
 MASTER DRAWING

SHEET NO.
 3

THOMPSON POINT - BRICK SOUTH
 CATERING KITCHEN

THIS DRAWING AND ALL INFORMATION HEREIN ARE THE PROPERTY OF THE DESIGNER AND MAY NOT BE USED OR COPIED, EITHER IN WHOLE OR IN PART, WITHOUT THE EXPRESSED WRITTEN CONSENT OF THE DESIGNER

REV NO.	REVISIONS:

PROJECT: BRICK SOUTH KITCHEN DATE: JULY 20, 2016
 DRAWN BY: T. MCARDLE CHECKED BY: T. MCARDLE
 SHEET TITLE: SHEET NO:

FOODSERVICE EQUIPMENT EXHAUST HOOD DETAILS FS-7

SCALE: 3/4"=1'-0"