

PANEL KP (KITCHEN HALL) SECTION 1 120/208 3PH 4W 400 AMP BUS - MLO 42K AIC NEMA TYPE 1 (RECESSED)													
CKT #	LOAD DESCRIPTION	AT	P	CA	DF	DA	CKT #	LOAD DESCRIPTION	AT	P	CA	DF	DA
1	ITEM 1 POWER (WALK IN COOLER)	20	1	15	1.00	15	2	ITEM 4 POWER (WALK IN COOLER)	20	1	15	1.00	15
3	ITEM 2 (COOLER EVAP)	15	2	1	0.70	1	4	ITEM 5 (COOLER EVAP)	15	2	1	0.70	1
5							6						
7	ITEM 2 HEAT TRACE (GFCI)	20	1	15	1.00	15	8	ITEM 5 HEAT TRACE (GFCI)	20	1	15	1.00	15
9	ITEM 3 (COOLER COMP)	15	2	8	0.70	5	10	ITEM 6 (COOLER COMP)	15	2	8	0.70	5
11							12						
13	ITEM 7 POWER (WALK IN COOLER)	20	1	15	1.00	15	14	ITEM 10 POWER (WALK IN COOLER)	20	1	15	1.00	15
15	ITEM 8 (COOLER EVAP)	15	2	1	0.70	1	16	ITEM 11 (COOLER EVAP)	15	2	1	0.70	1
17							18						
19	ITEM 8 HEAT TRACE (GFCI)	20	1	15	1.00	15	20	ITEM 11 HEAT TRACE (GFCI)	20	1	15	1.00	15
21	ITEM 9 (COOLER COMP)	15	2	8	0.70	5	22	ITEM 12 (COOLER COMP)	15	2	8	0.70	5
23							24						
25	ITEM 18 (ICE MAKER)	15	2	14	0.70	10	26						
27							28	ITEM 22 (80 Qt MIXER)	20	3	12	0.50	6
29	ITEM 27 (20 Qt MIXER)	20	1	8	0.50	4	30						
31	ITEM 30 (SHEETER)	20	1	4	0.50	2	32						
33							34	ITEM 55 (DISHWASHER CONVEYOR)	80	3	60	0.70	42
35	ITEM 54 (DISOPSER)	15	3	3	0.50	2	36						
37							38						
39	SPARE	20	1			0	40	ITEM 62 (BOOSTER HEATER)	90	3	67	0.70	47
41	SPARE	20	1			0	42						

PROVIDE WITH FEED THRU LUGS FOR SECTION 2

Section 1	
Tot Amps/PH - Connected Load	217.32
Demand Factor	73.74%
Total Amps/PH - Demand	160.26
Connected KVA	78.20
Demand KVA	57.67
Min. Panel Size (Demand x 1.25) - Amps	200.33

PANEL KP (KITCHEN HALL) SECTION 2 120/208 3PH 4W 400 AMP BUS - MLO 42K AIC NEMA TYPE 1 (RECESSED)													
CKT #	LOAD DESCRIPTION	AT	P	CA	DF	DA	CKT #	LOAD DESCRIPTION	AT	P	CA	DF	DA
43	OFFICE RECEPETS	20	1	3	0.50	2	44	KITCHEN RECEPETS	20	1	9	0.50	5
45	EXTERIOR EQUIPMENT RECEPETS	20	1	3	0.50	2	46	KITCHEN RECEPETS	20	1	9	0.50	5
47	SPARE	20	1			0	48	DINING RECEPETS	20	1	12	0.50	6
49	SPARE	20	1			0	50	BATHROOM RECEPT	20	1	3	0.50	2
51	SPARE	20	1			0	52	SPARE	20	1			0
53	SPARE	20	1			0	54	SPARE	20	1			0
55	SPARE	20	1			0	56	SPARE	20	1			0
57	SPARE	20	1			0	58	SPARE	20	1			0
59	SPARE	20	1			0	60	SPARE	20	1			0
61	SPARE	20	1			0	62	SPARE	20	1			0
63	SPARE	20	1			0	64	SPARE	20	1			0
65	SPARE	20	1			0	66	SPARE	20	1			0
67	SPARE	20	1			0	68	SPARE	20	1			0
69	ITEM 20 (HOOD POWER) SHUNT TRIP	20	1	15	1.00	15	70	SPARE	20	1			0
71	SPACE	20	1			0	72	ITEM 40 (HOOD POWER) SHUNT TRIP	20	1	15	1.00	15
73	ITEM 48 (FRYER BATTERY) SHUNT TRIP	20	1	7	0.70	5	74	SPACE	20	1			0
75	SPACE	20	1			0	76	ITEM 40 (HOOD POWER) SHUNT TRIP	20	1	15	1.00	15
77							78	SPACE	20	1			0
79	PANEL KH FEEDER	400	3	150	0.70	105	80	ITEM 56 (CONDENSATE HOOD)	20	1	15	0.70	11
81							82	EF-4	15	1	10	0.70	7
83	SPACE	20	1	150	0.70	105	84	EF-5	15	1	3	0.70	2

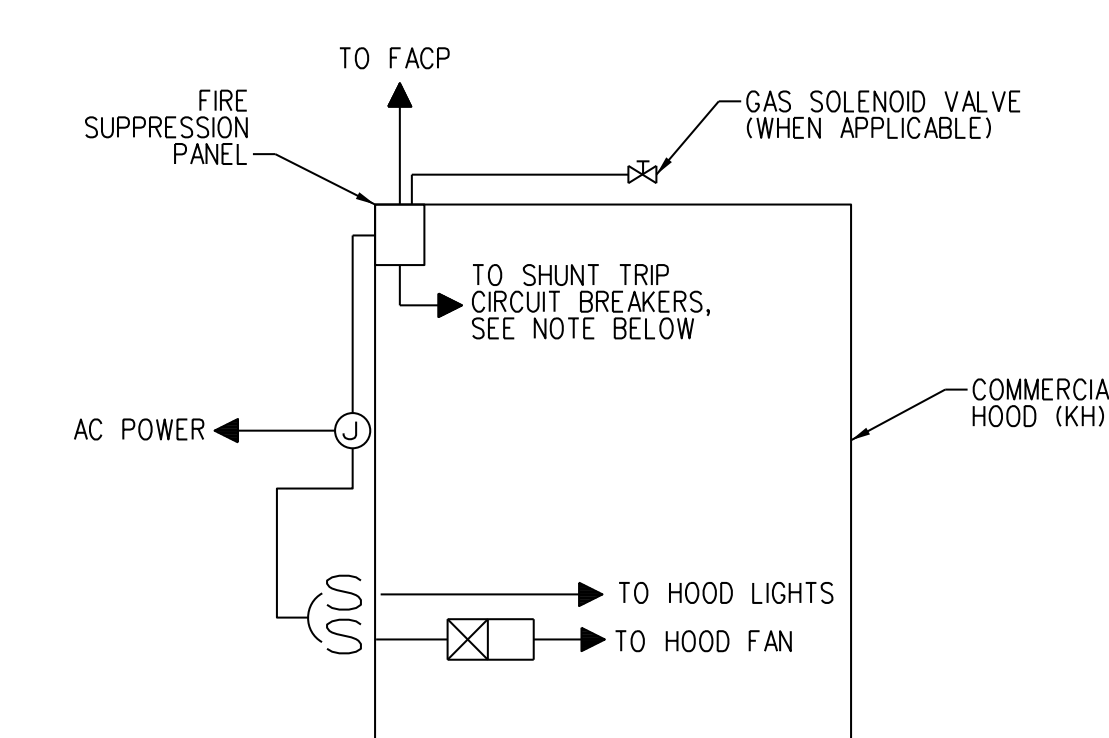
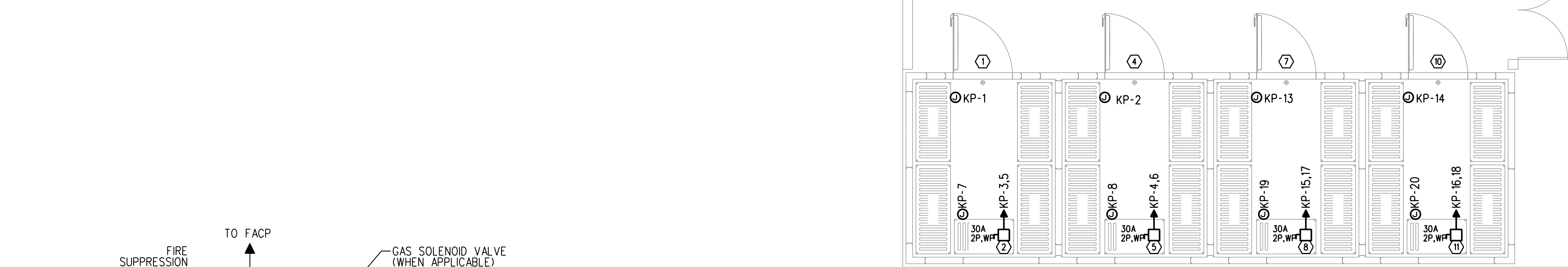
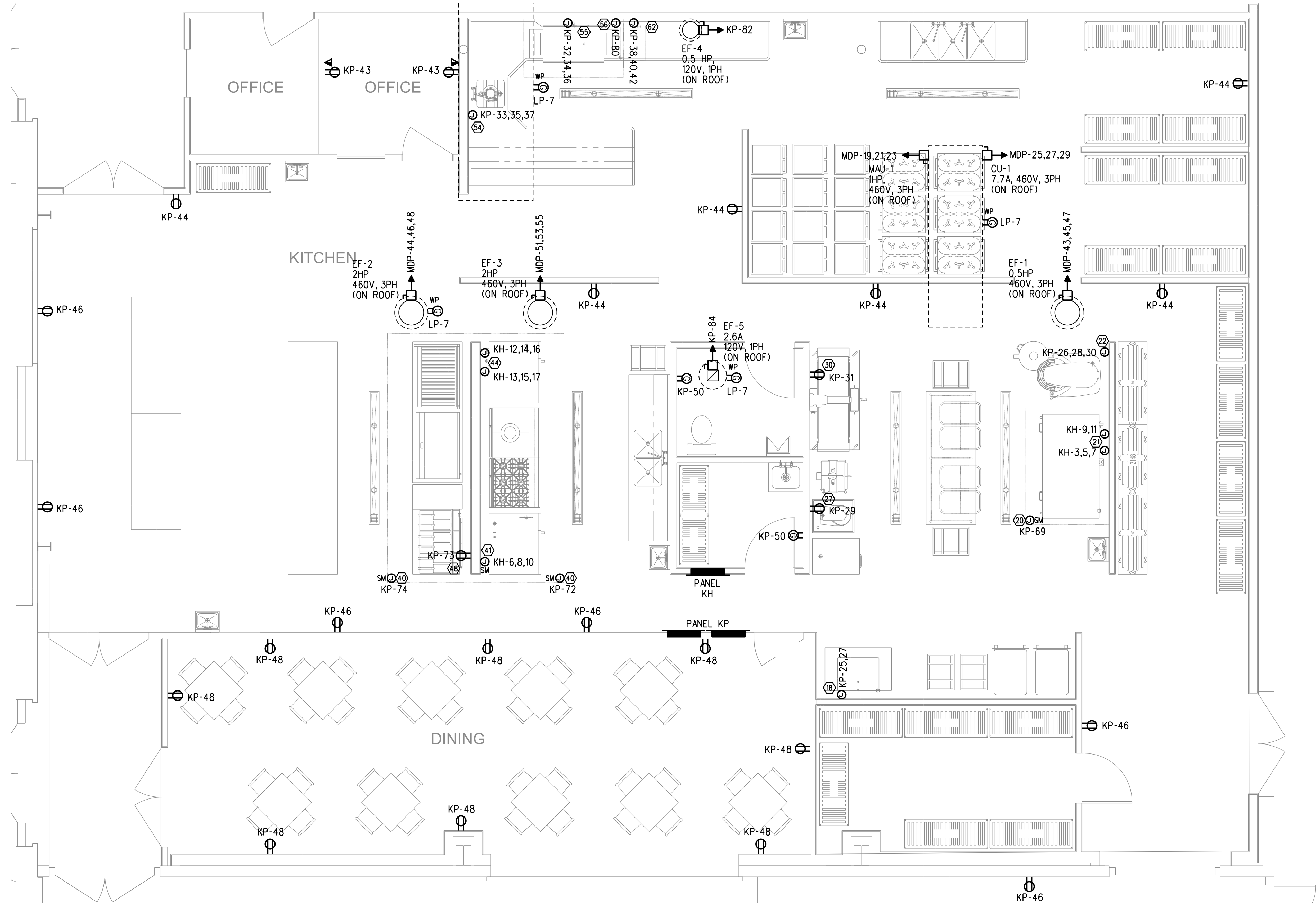
Section 2	
Tot Amps/PH - Connected Load	189.13
Demand Factor	71.00%
Total Amps/PH - Demand	134.29
Connected KVA	68.06
Demand KVA	48.32
Min. Panel Size (Demand x 1.25) - Amps	167.87

NOTES:
 1. PROVIDE ARC FAULT TYPE CIRCUIT BREAKERS IN ACCORDANCE WITH NEC 210.12
 2. PROVIDE TAMPER RESISTANT OUTLETS PER NEC 406.11 SECTION 210.52

PANEL KH (KITCHEN HALL) SECTION 1 277/480 3PH 4W 225 AMP BUS - MLO 42K AIC NEMA TYPE 1 (RECESSED)													
CKT #	LOAD DESCRIPTION	AT	P	CA	DF	DA	CKT #	LOAD DESCRIPTION	AT	P	CA	DF	DA
1	SPARE	20	1			0	2	SPARE	20	1			0
3							4	SPARE	20	1			0
5	ITEM 21 (OVEN)	25	3	20	0.70	14	6				73	0.70	51
7							8	ITEM 41 (COMBI-OVEN ROLL-IN)	90	3	73	0.70	51
9	ITEM 21 (PROOFER)	15	2	7	0.70	5	10				73	0.70	51
11							12				26	0.70	18
13	ITEM 44 (COMBI-OVEN)	30	3	26	0.70	18	14	ITEM 44 (COMBI-OVEN)	30	3	26	0.70	18
15							16				26	0.70	18
17							18	SPARE	20	1			0
19	SPARE	20	1			0	20	SPARE	20	1			0
21	SPARE	20	1			0	22	SPARE	20	1			0
23	SPARE	20	1			0	24	SPARE	20	1			0

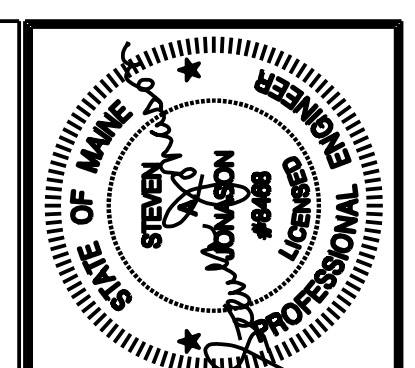
Section 1	
Tot Amps/PH - Connected Load	149.67
Demand Factor	70.00%
Total Amps/PH - Demand	104.77
Connected KVA	124.28
Demand KVA	87.00
Min. Panel Size (Demand x 1.25) - Amps	130.96

NOTES:
 1. PROVIDE ARC FAULT TYPE CIRCUIT BREAKERS IN ACCORDANCE WITH NEC 210.12
 2. PROVIDE TAMPER RESISTANT OUTLETS PER NEC 406.11 SECTION 210.52

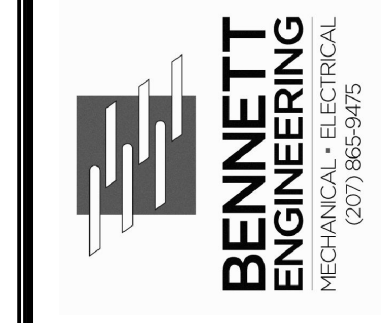


COMMERCIAL HOOD WIRING DETAIL
 SCALE: NONE

NOTE: OUTLETS UNDER HOOD SHALL BE SUPPLIED BY SHUNT TRIP CIRCUIT BREAKERS



Prepared For:



Consultant:

ARCHETYPE
 48 Union Wharf Portland, Maine 04101
 (207) 772-6022 Fax (207) 772-4056

Architect:

THOMPSON'S POINT - BRICK SOUTH
 THOMPSON'S POINT, PORTLAND ME

Project:

Revisions:
 1 | 08/04/2016 | ISSUED FOR PERMIT

Scale: AS NOTED

Date: 08-04-2016
 KITCHEN PARTIAL PLAN, PANEL SCHEDULES AND DETAILS

E103