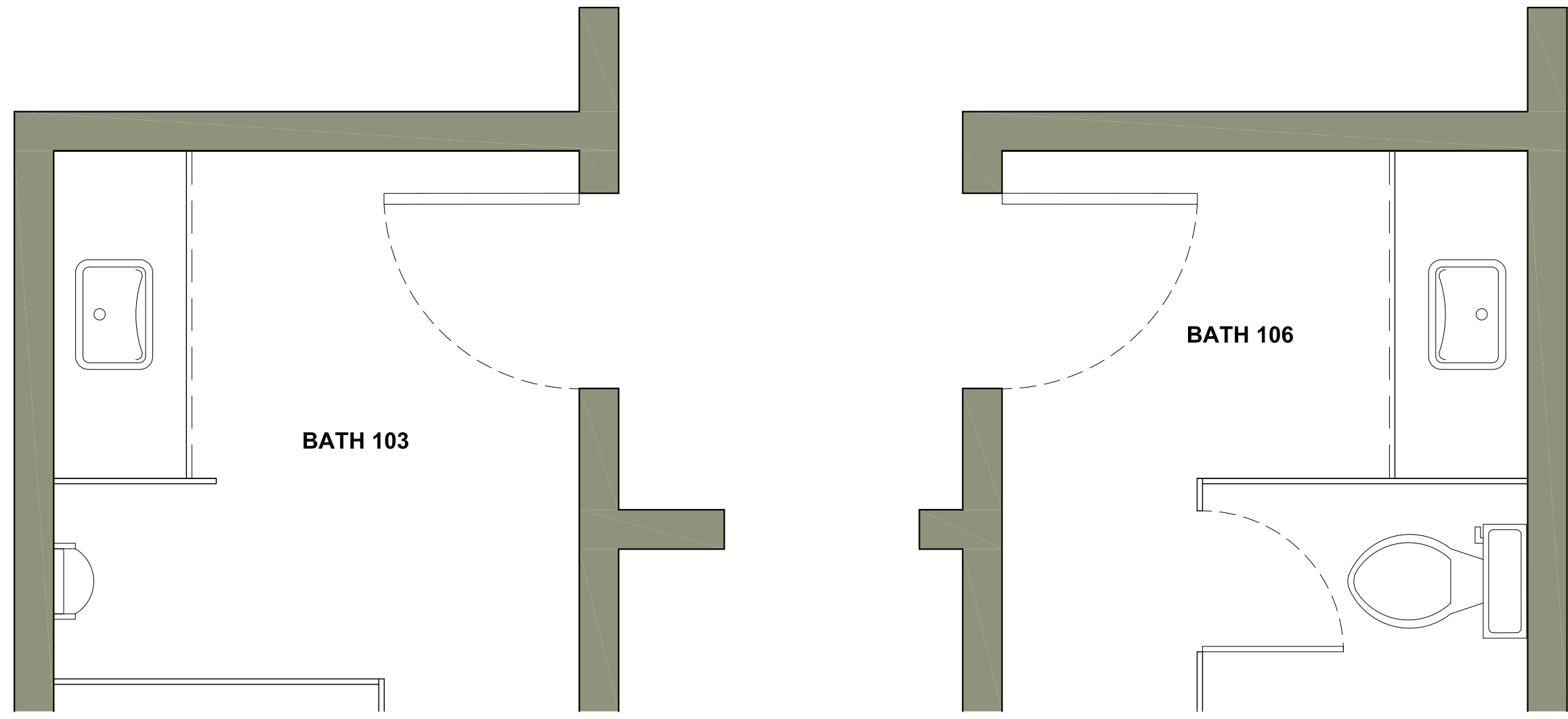
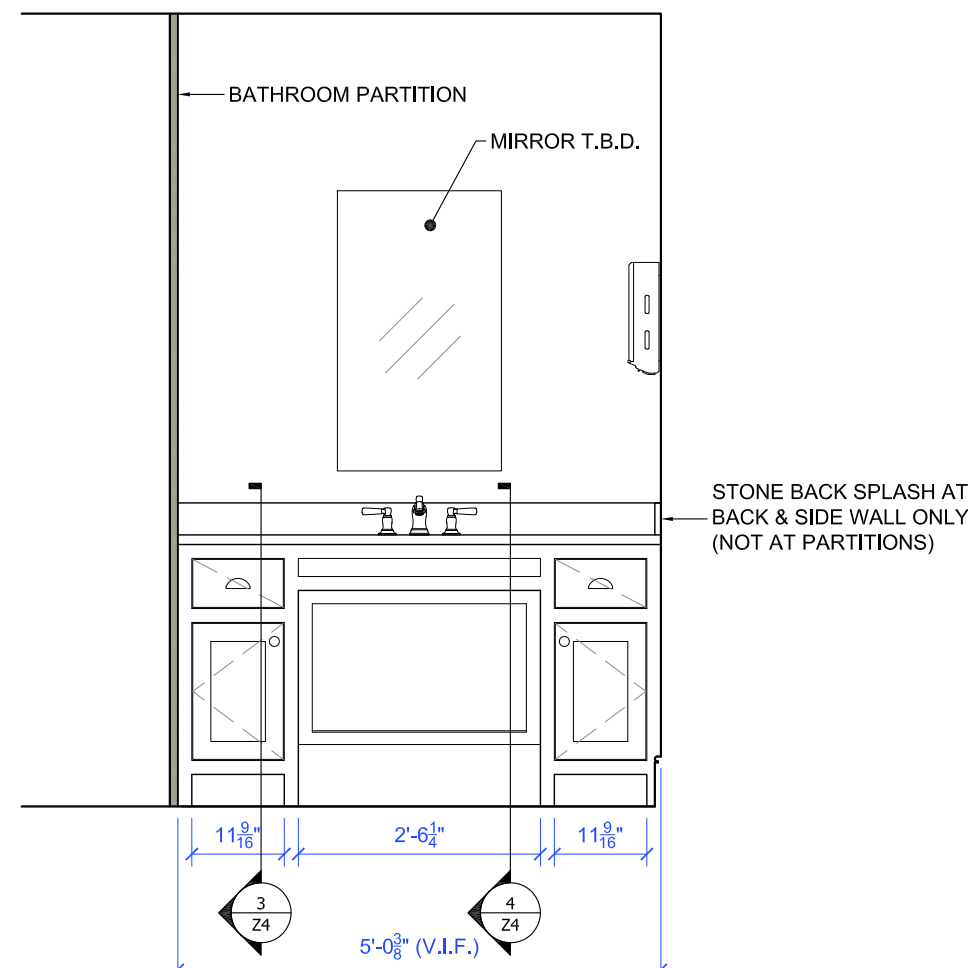


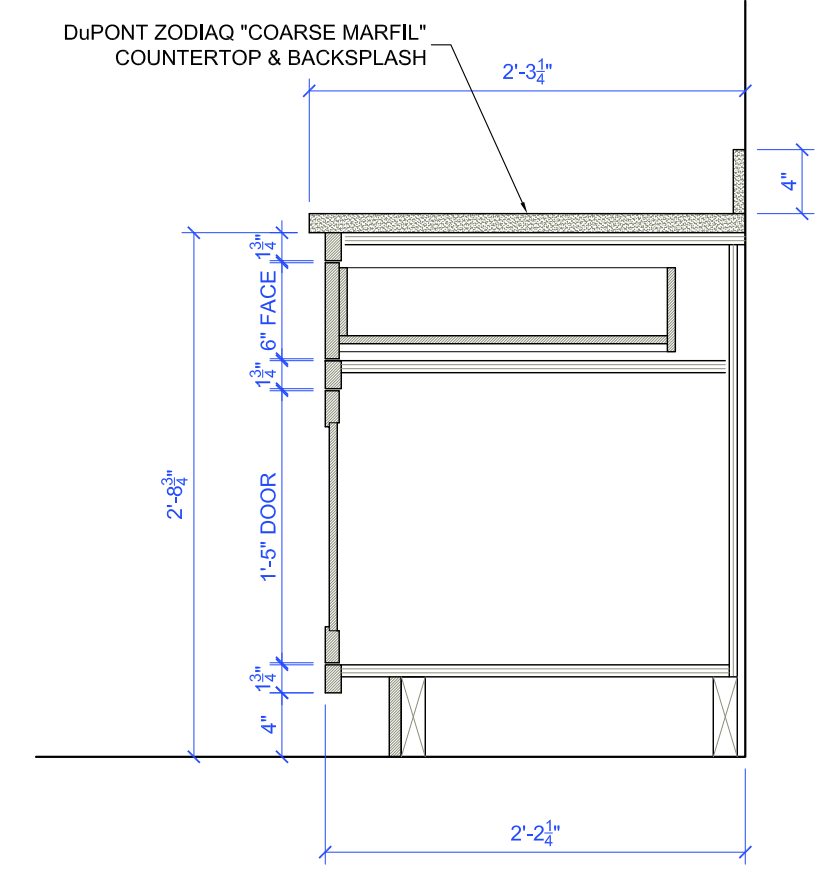
- VANITY CABINETRY NOTES:
- CONTRACTOR/FABRICATOR IS RESPONSIBLE FOR FINAL CABINETRY PRODUCTION DRAWINGS/SUBMITTALS.
 - ALL ROOM MEASUREMENTS TO BE VERIFIED IN THE FIELD PRIOR TO CABINETRY FABRICATION.
 - ALL PAINTED CABINETRY DOORS, SLAB DRAWER FACES, FACE FRAMES AND FINISHED END-PANEL FRAMES TO BE SOLID MAPLE OR POPLAR UNLESS OTHERWISE SPECIFIED.
 - ALL CABINET BOXES TO BE FABRICATED FROM PRE-FINISHED MAPLE-VENEERED PLYWOOD.
 - 1 1/2" FACE FRAMES THROUGHOUT.
 - CUSTOM BALTIC BIRCH PLYWOOD DRAWER BOXES WITH BLUM SOFT-CLOSE UNDER-MOUNT SLIDES.
 - PULL HARDWARE: AMEROCK ALLISON 1 1/2"-DIAMETER KNOBS (53005-G10) ON DOORS, AMEROCK ALLISON 3" BIN PULLS (53010-G10) ON DRAWERS (SATIN NICKEL FINISH ON ALL).
 - CABINET HINGES: BLUM CLIP TOP BLUMOTION SOFT-CLOSE EURO-HINGE (SATIN NICKEL FINISH).
 - COUNTERTOP MATERIAL: DUPONT ZODIAQ "COARSE MARFIL" - ONE-INCH (1") COUNTERTOP OVERHANG FROM FACE FRAME.
 - DOOR AND DRAWER GAPS TO BE 1/8" THROUGHOUT.
 - FLAT-PANEL SHAKER-STYLE INSET CABINET DOORS WITH 2 1/2" RAILS AND STILES.
 - PAINT: T.B.D.



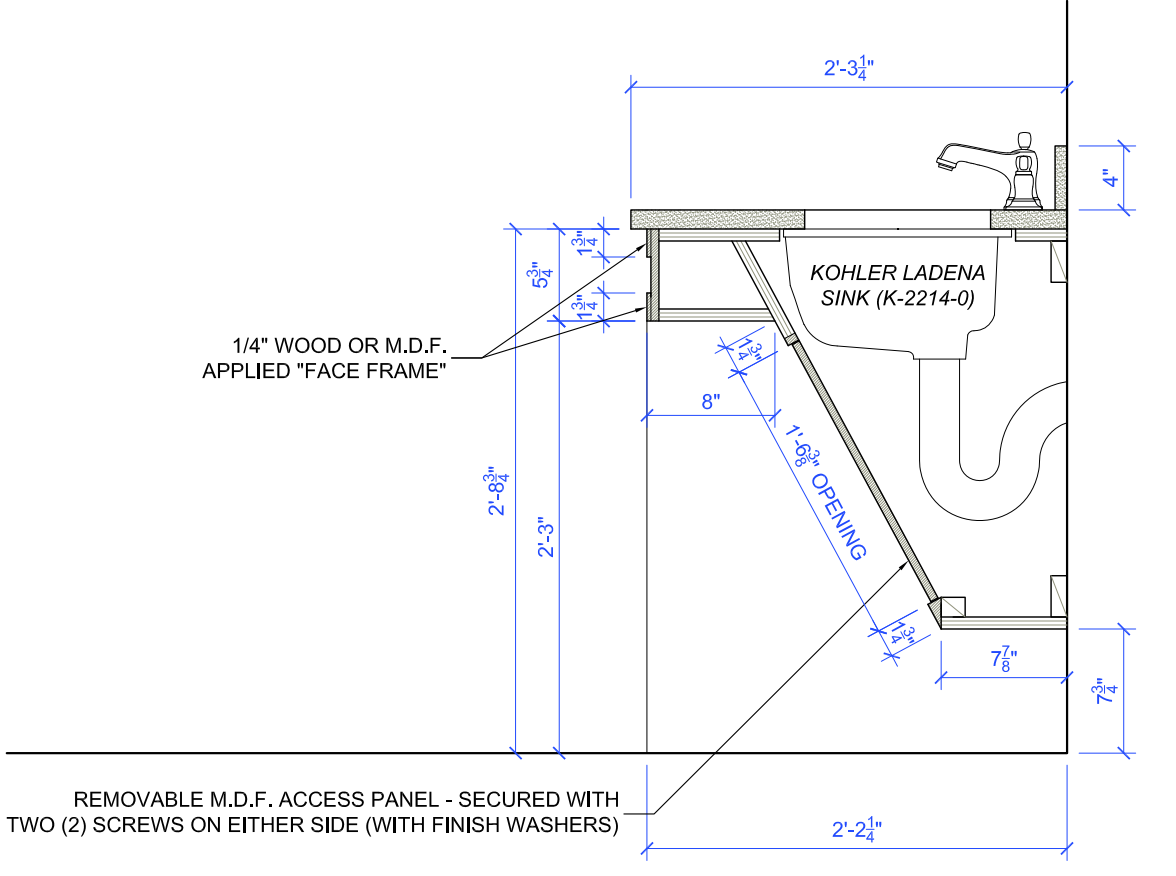
1 BATH 103 & BATH 106 FLOOR PLAN
Z4 SCALE: 1/2" = 1' - 0"



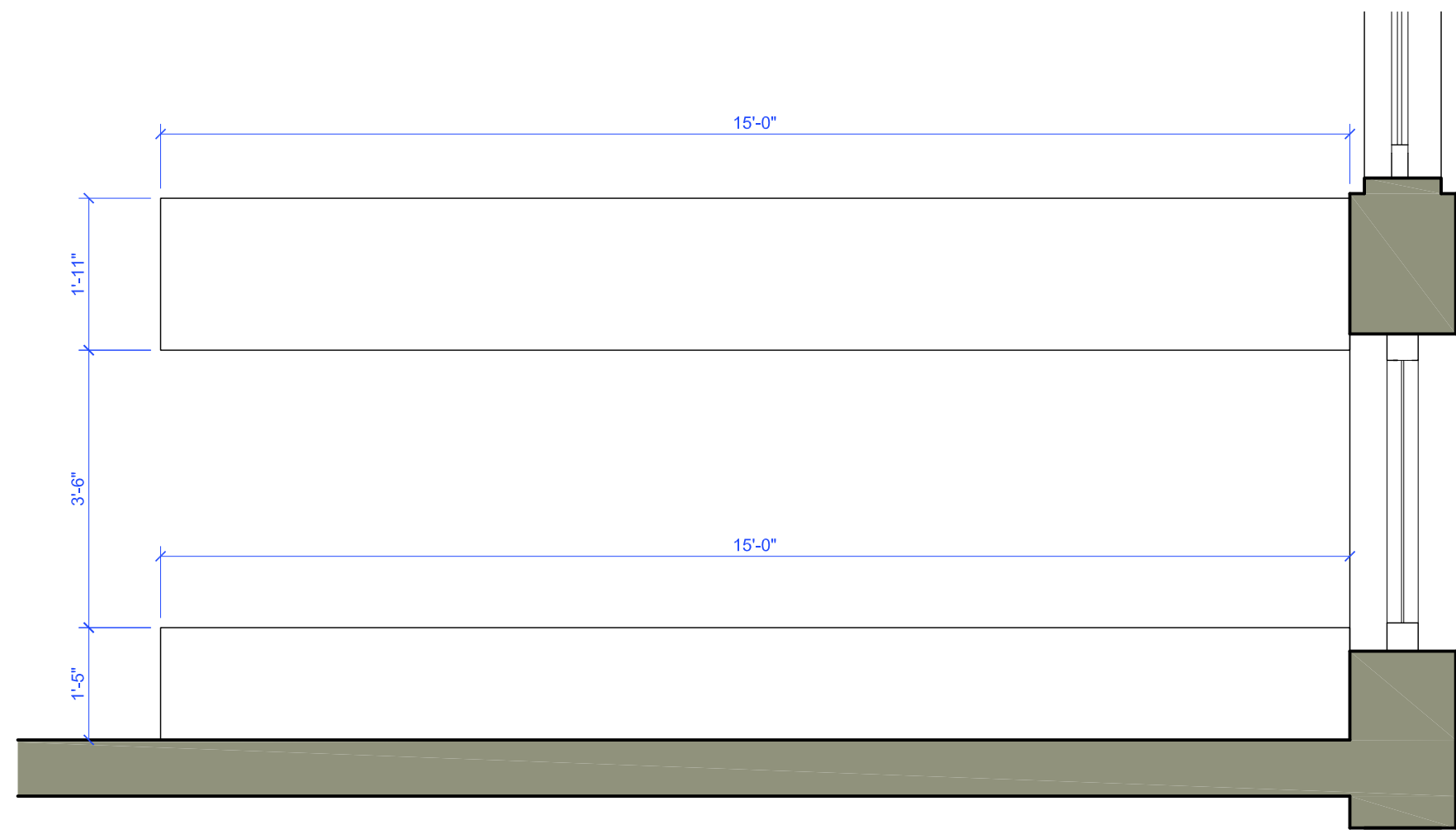
2 BATH 103/106 VANITY: ELEVATION
Z4 SCALE: 1/2" = 1' - 0"



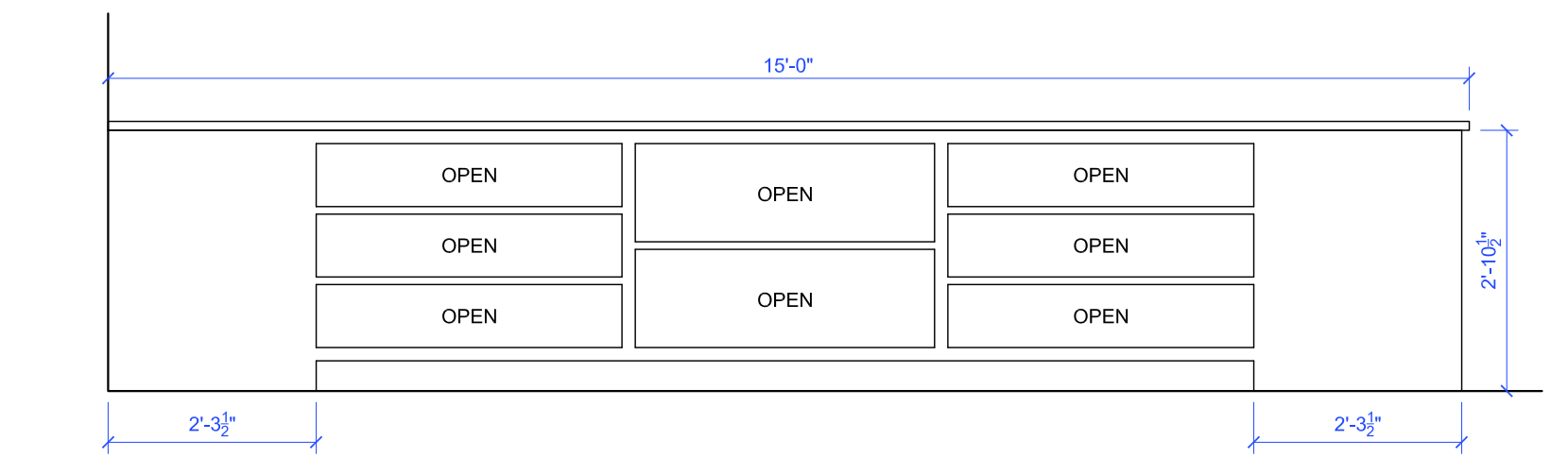
3 BATH 103/106 VANITY: SECTION B
Z4 SCALE: 1" = 1' - 0"



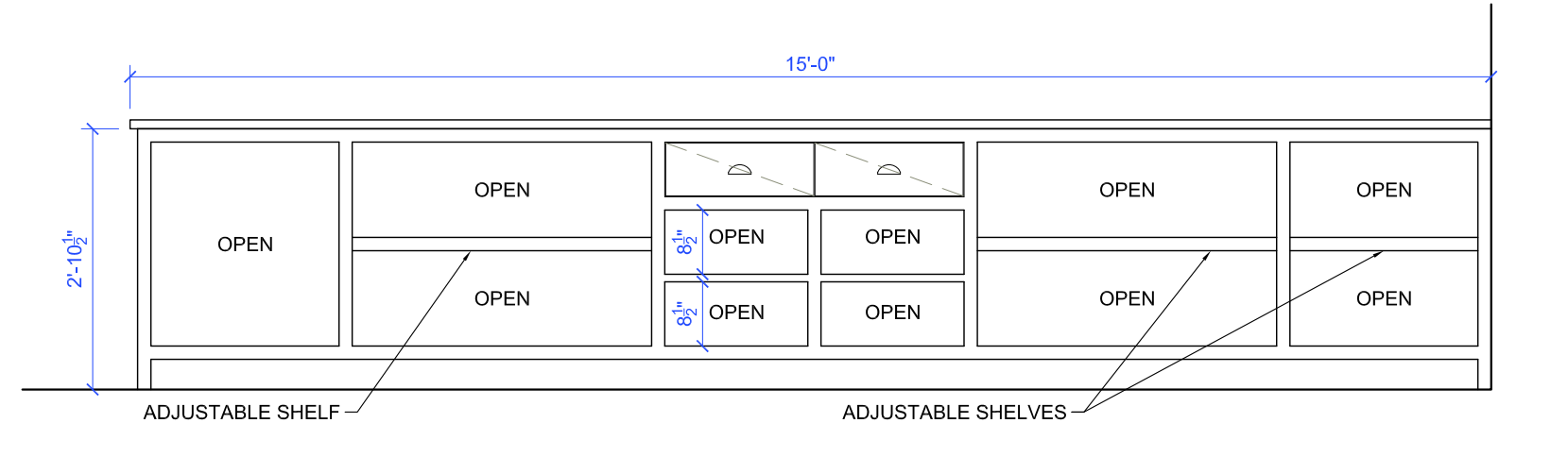
4 BATH 103/106 VANITY: SECTION A
Z4 SCALE: 1" = 1' - 0"



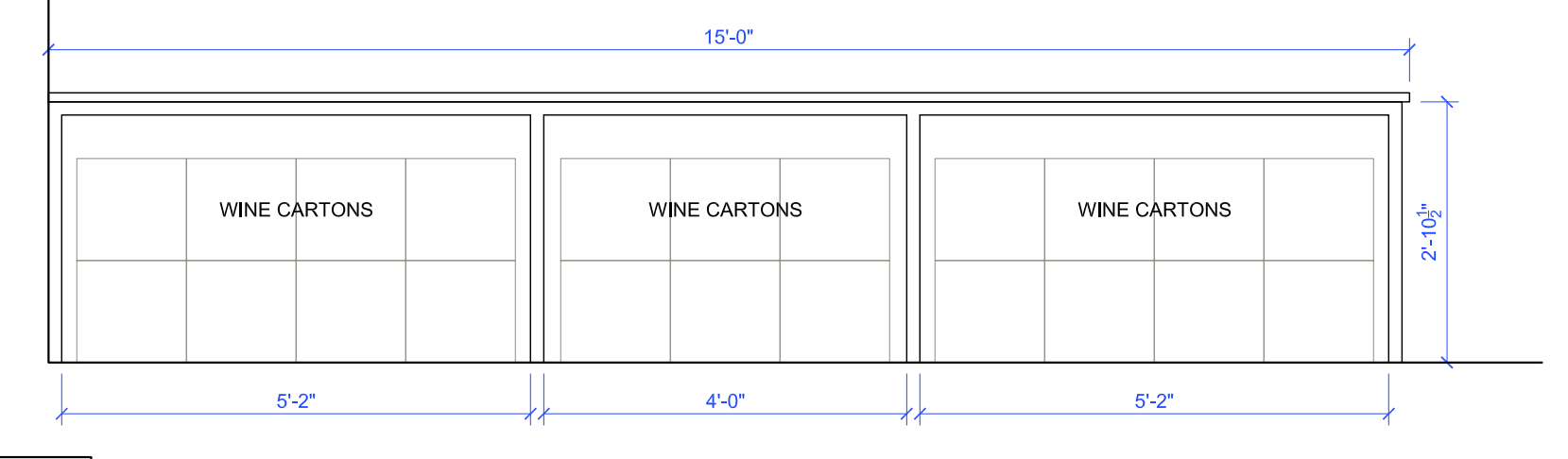
5 CHECKOUT FLOOR PLAN
Z4 SCALE: 1/2" = 1' - 0"



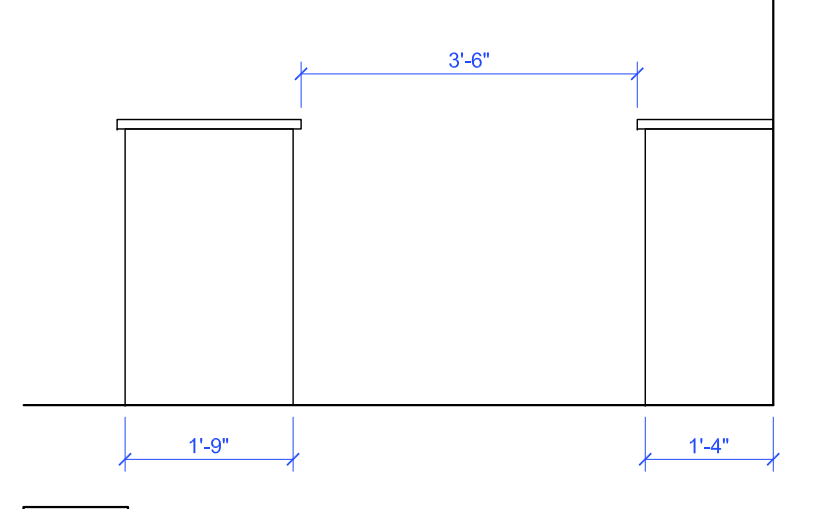
6 CHECKOUT ELEVATION
Z4 SCALE: 1/2" = 1' - 0"



7 CHECKOUT ELEVATION
Z4 SCALE: 1/2" = 1' - 0"

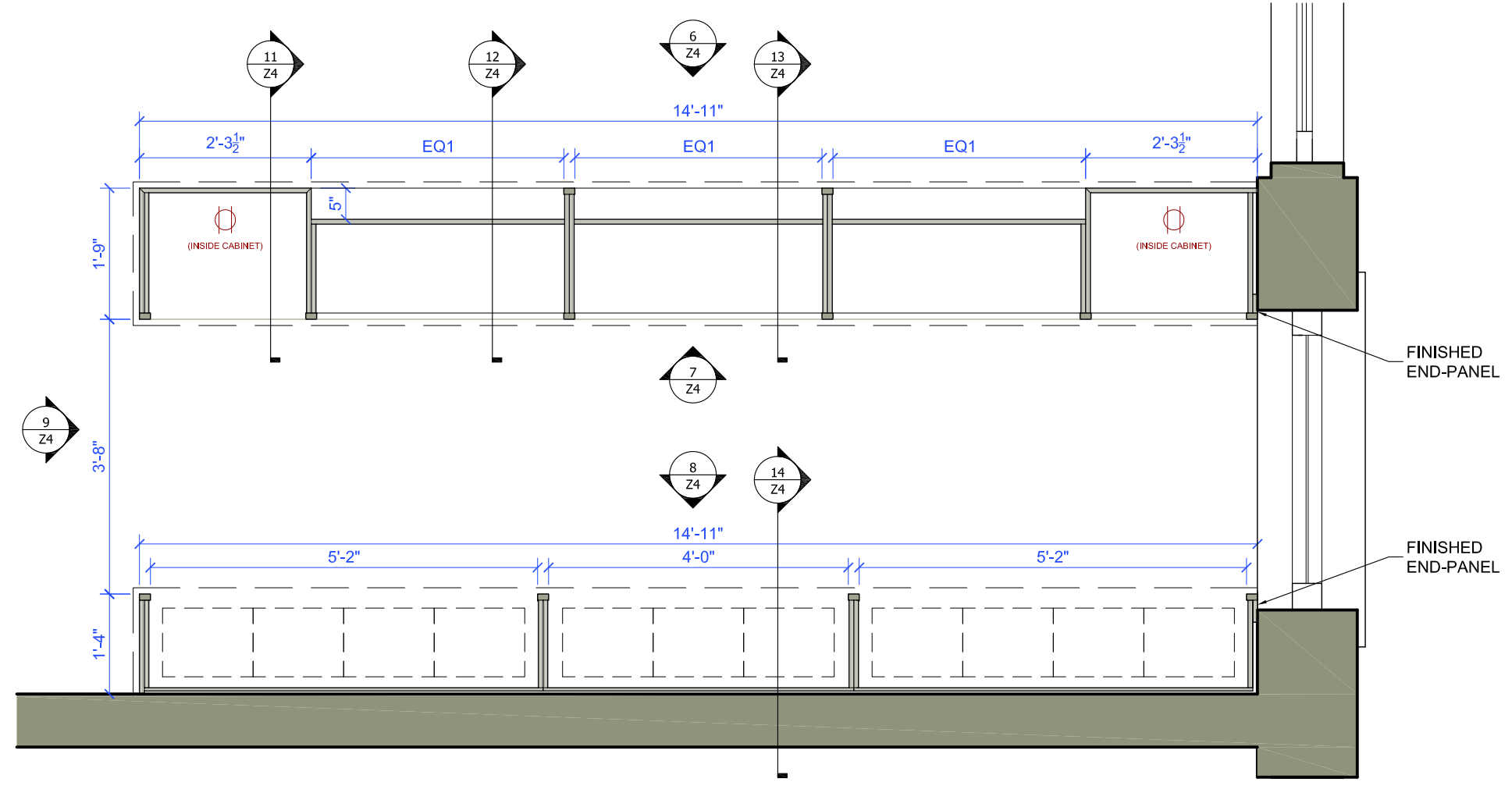


8 CHECKOUT ELEVATION
Z4 SCALE: 1/2" = 1' - 0"

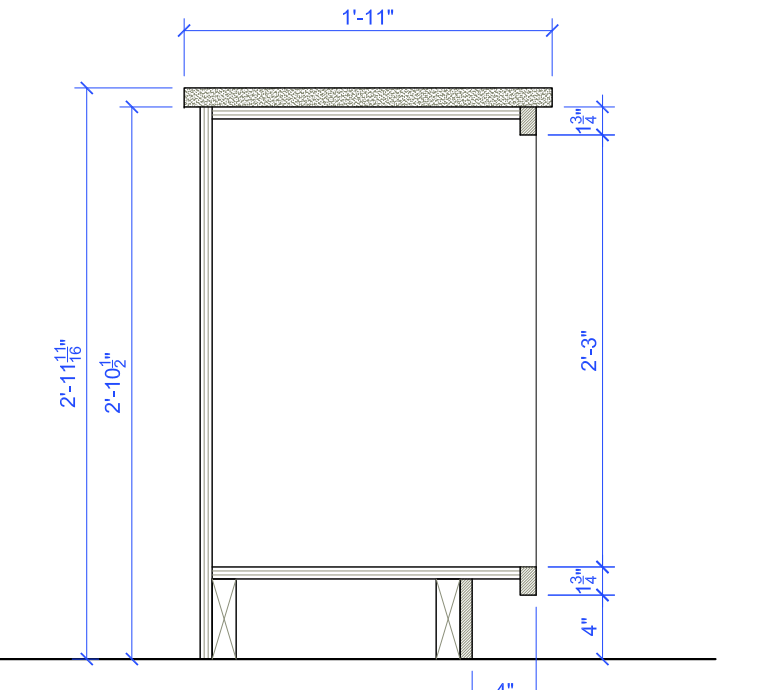


9 CHECKOUT ELEVATION
Z4 SCALE: 1/2" = 1' - 0"

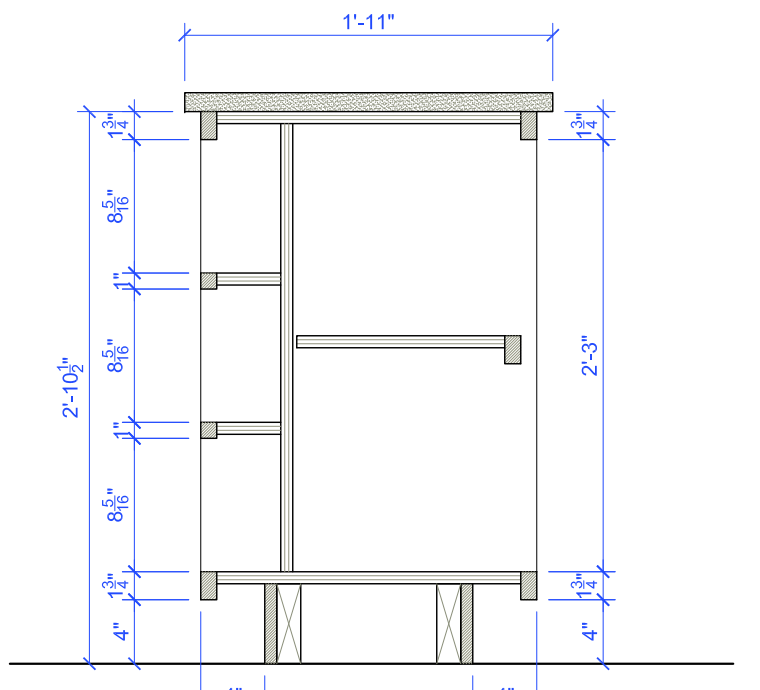
- VANITY CABINETRY NOTES:
- CONTRACTOR/FABRICATOR IS RESPONSIBLE FOR FINAL CABINETRY PRODUCTION DRAWINGS/SUBMITTALS.
 - ALL ROOM MEASUREMENTS TO BE VERIFIED IN THE FIELD PRIOR TO CABINETRY FABRICATION.
 - ALL PAINTED CABINETRY DOORS, SLAB DRAWER FACES, FACE FRAMES AND FINISHED END-PANEL FRAMES TO BE SOLID MAPLE OR POPLAR UNLESS OTHERWISE SPECIFIED.
 - ALL CABINET BOXES TO BE FABRICATED FROM PRE-FINISHED MAPLE-VENEERED PLYWOOD.
 - 1 1/2" FACE FRAMES THROUGHOUT.
 - CUSTOM BALTIC BIRCH PLYWOOD DRAWER BOXES WITH BLUM SOFT-CLOSE UNDER-MOUNT SLIDES.
 - PULL HARDWARE: AMEROCK ALLISON 1 1/2"-DIAMETER KNOBS (53005-G10) ON DOORS, AMEROCK ALLISON 3" BIN PULLS (53010-G10) ON DRAWERS (SATIN NICKEL FINISH ON ALL).
 - CABINET HINGES: BLUM CLIP TOP BLUMOTION SOFT-CLOSE EURO-HINGE (SATIN NICKEL FINISH).
 - COUNTERTOP MATERIAL: DUPONT ZODIAQ "COARSE MARFIL" - ONE-INCH (1") COUNTERTOP OVERHANG FROM FACE FRAME.
 - DOOR AND DRAWER GAPS TO BE 1/8" THROUGHOUT.
 - FLAT-PANEL SHAKER-STYLE INSET CABINET DOORS WITH 2 1/2" RAILS AND STILES.
 - PAINT: T.B.D.



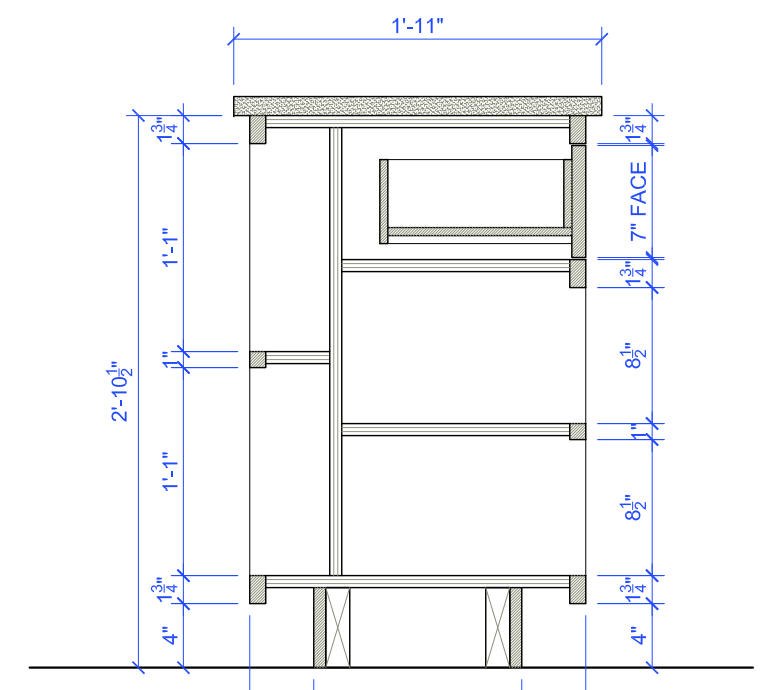
10 CHECKOUT PLAN SECTION
Z4 SCALE: 1/2" = 1' - 0"



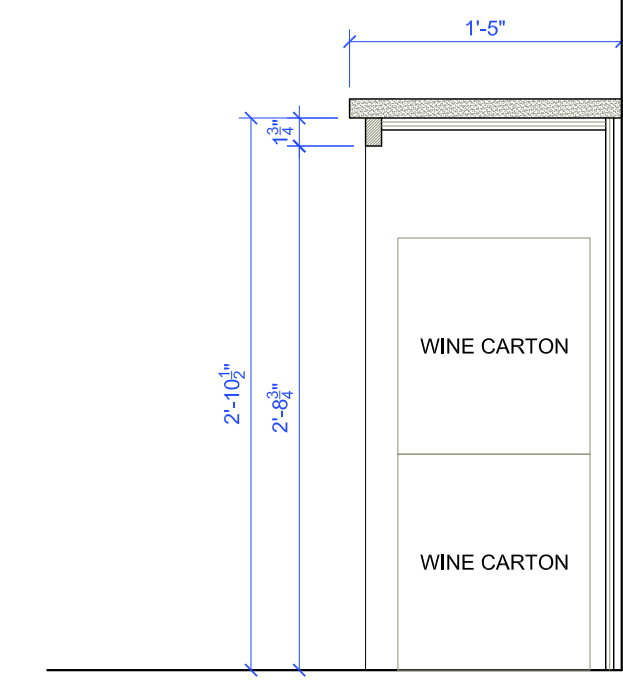
11 CHECKOUT SECTION DETAIL A
Z4 SCALE: 1" = 1' - 0"



12 CHECKOUT SECTION DETAIL B
Z4 SCALE: 1" = 1' - 0"



13 CHECKOUT SECTION DETAIL C
Z4 SCALE: 1" = 1' - 0"



14 CHECKOUT SECTION DETAIL D
Z4 SCALE: 1" = 1' - 0"



15 CHECKOUT PERSPECTIVE VIEW
Z4 NOT TO SCALE