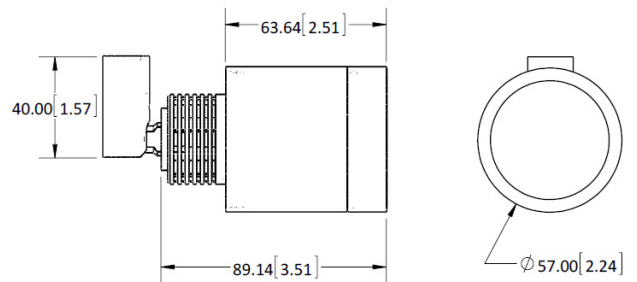


GU10 W

- Single lamp suspended track head
- Adjustable 330 degree x 90 degree
- Solid brass hardware with powder coat or metal plated finish
- Single lamp trackhead for use with MR16 lamp
- Comes standard with solite lens
- Photo shown is 1804-SV with P-Track adapter
- Go to [lamps](#) for other options
- When choosing monopoint P1, P2, P3, P4, or P5, you must order proper [transformers](#) or [drivers](#)
- This fixture can be mounted on any Prima Lighting System and ceiling canopy through use of an appropriate adapter, see website for available system codes and specialized spec sheets.
- Halogen 12V GU5.3 MR16 max. 35W lamp or halogen 120V GU10 MR16 max. 35W lamp is included when purchased with Prima transformer
- Consult factory for pricing on fixtures connect to multipoint ([M1~ M7 canopy](#))
- 5-year warranty



DIMENSIONS ARE IN MILLIMETERS (INCHES)

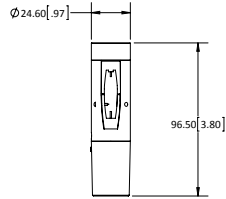
Variable Specs

Note: Variable spec listed below are dependant on system code selection. [Click here to see specific variations.](#)

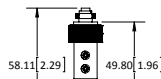
- Black
 Polished Chrome
 White
- Bronze
 Silver or Aluminum
- Champagne (Matted Gold)

SYSTEM CODE:	LUMEN STYLES:	FINISH COLORS:
(10) 120V ADAPTER FOR P-TRACK FIXTURE	11/HD	BK/SV/WH
(20) FIT SYSTEM	LD/00	BK/SV
(25) 120V RETRO-FIT ADAPTER FOR H-TRACK FIXTURE	11/HD	BK/SV/WH
(26) 120V RETRO-FIT ADAPTER FOR J-TRACK FIXTURE	11/HD	BK/SV/WH
(27) H-TRACK RETRO FIT ADAPTER	LD/00	BK/SV/WH
(28) J-TRACK RETRO FIT ADAPTER	LD/00	BK/SV/WH
(29) HOUSING ADAPTER FOR P-TRACK	LD/00	BK/SV/WH
(40) LOW VOLTAGE MONORAIL SYSTEM	LD/00	BK/SV/BZ/CP/PC
(42) CABLE SYSTEM – 6" WIDTH	LD/00	BK/SV/PC
(43) CABLE SYSTEM – 2.75" WIDTH	LD/00	BK/SV/PC
(E1) MONOPOINT 5" CANOPY W/ 120V TO 12V TRANSFORMER	00	BK/SV/BZ/PC/CP/WH
(E2) MONOPOINT 5" CANOPY W/ 277V TO 12V TRANSFORMER	00	BK/SV/BZ/PC/CP/WH
(E3) MONOPOINT 5" CANOPY W/ 120V BALLAST OR LED 120V/12V TRANSFORMER	LD	BK/SV/BZ/PC/CP/WH
(E4) MONOPOINT 5" CANOPY W/ 277V BALLAST OR LED 277V/12V TRANSFORMER	LD	BK/SV/BZ/PC/CP/WH
(E5) MONOPOINT 5.5" CANOPY W/ DIMMABLE 120V~277V BALLAST	-	-
(E6) MONOPOINT 5.5" CANOPY W/ CONSTANT CURRENT DRIVER	-	-
(M1-M7) MULTIPOINT	(CONSULT FACTORY)	(CONSULT FACTORY)
(P1) MONOPOINT DIA. 0.7" W/ THREADED NIPPLE MOUNTING	LD/00	BK/SV/BZ/PC/CP/WH
(P2) MONOPOINT DIA. 1.6" W/ THREADED NIPPLE MOUNTING	LD/00	BK/SV/BZ/PC/CP/WH
(P3) MONOPOINT DIA. 1.6" W/ SCREW/ANCHOR MOUNTING	LD/00	BK/SV/BZ/PC/CP/WH
(P4) MONOPOINT 5" DIRECT MOUNT SQUARE COVER PLATE	LD/00	BK/SV/BZ/PC/CP/WH
(P5) MONOPOINT 5" JBOX PLATE	LD/HD/11/00	BK/SV/BZ/PC/CP/WH

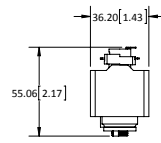
"-" MEANS NOT AVAILABLE
NOTE: DIMENSIONS ARE IN MILLIMETERS [INCHES]



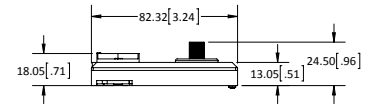
(10) 120V ADAPTER FOR P-TRACK FIXTURE



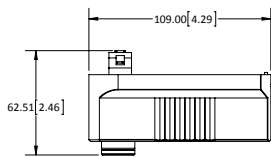
(20) FIT SYSTEM



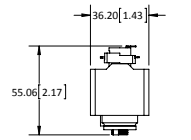
(25) 120V RETRO-FIT ADAPTER FOR H-TRACK FIXTURE



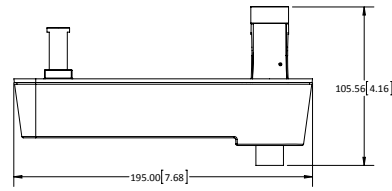
(26) 120V RETRO-FIT ADAPTER FOR J-TRACK FIXTURE



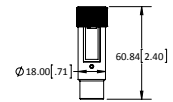
(27) H-TRACK ADAPTER



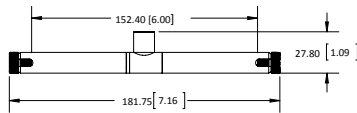
(28) J-TRACK ADAPTER



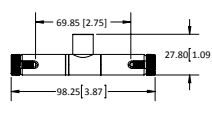
(29) HOUSING ADAPTER FOR P-TRACK



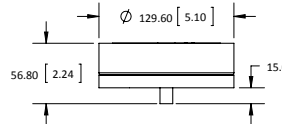
(40) LOW VOLTAGE MONORAIL SYSTEM



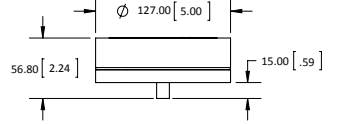
(42) CABLE SYSTEM - 6.00" WIDTH



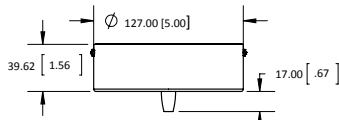
(43) CABLE SYSTEM - 2.75" WIDTH



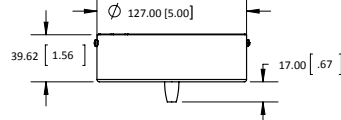
(E1) MONOPOINT 5" CANOPY W/ 120V TO 12V TRANSFORMER



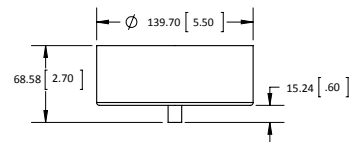
(E2) MONOPOINT 5" CANOPY W/ 277V TO 12V TRANSFORMER



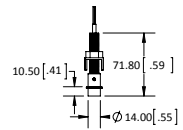
(E3) MONOPOINT 5" CANOPY W/ 120V BALLAST OR LED 120V/12V TRANSFORMER



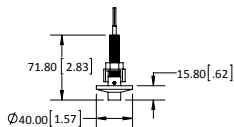
(E4) MONOPOINT 5" CANOPY W/ &+V BALLAST OR LED 277V/12V TRANSFORMER



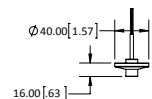
(E5) MONOPOINT 5.5" CANOPY W/ DIMMABLE 120V~277V BALLAST
(E6) MONOPOINT 5.5" CANOPY W/ CONSTANT CURRENT DRIVER



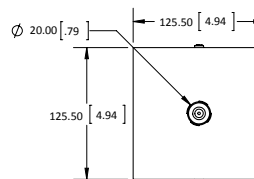
(P1) MONOPOINT DIA. 0.7" W/ THREADED NIPPLE MOUNTING



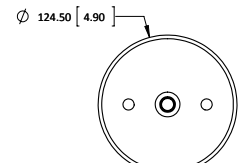
(P2) MONOPOINT DIA. 1.6" W/ THREADED NIPPLE MOUNTING



(P3) MONOPOINT DIA. 1.6" W/ SCREW/ANCHOR MOUNTING



(P4) 5" DIRECT MOUNT SQUARE COVER PLATE



(P5) MONOPOINT 5" JBOX PLATE