

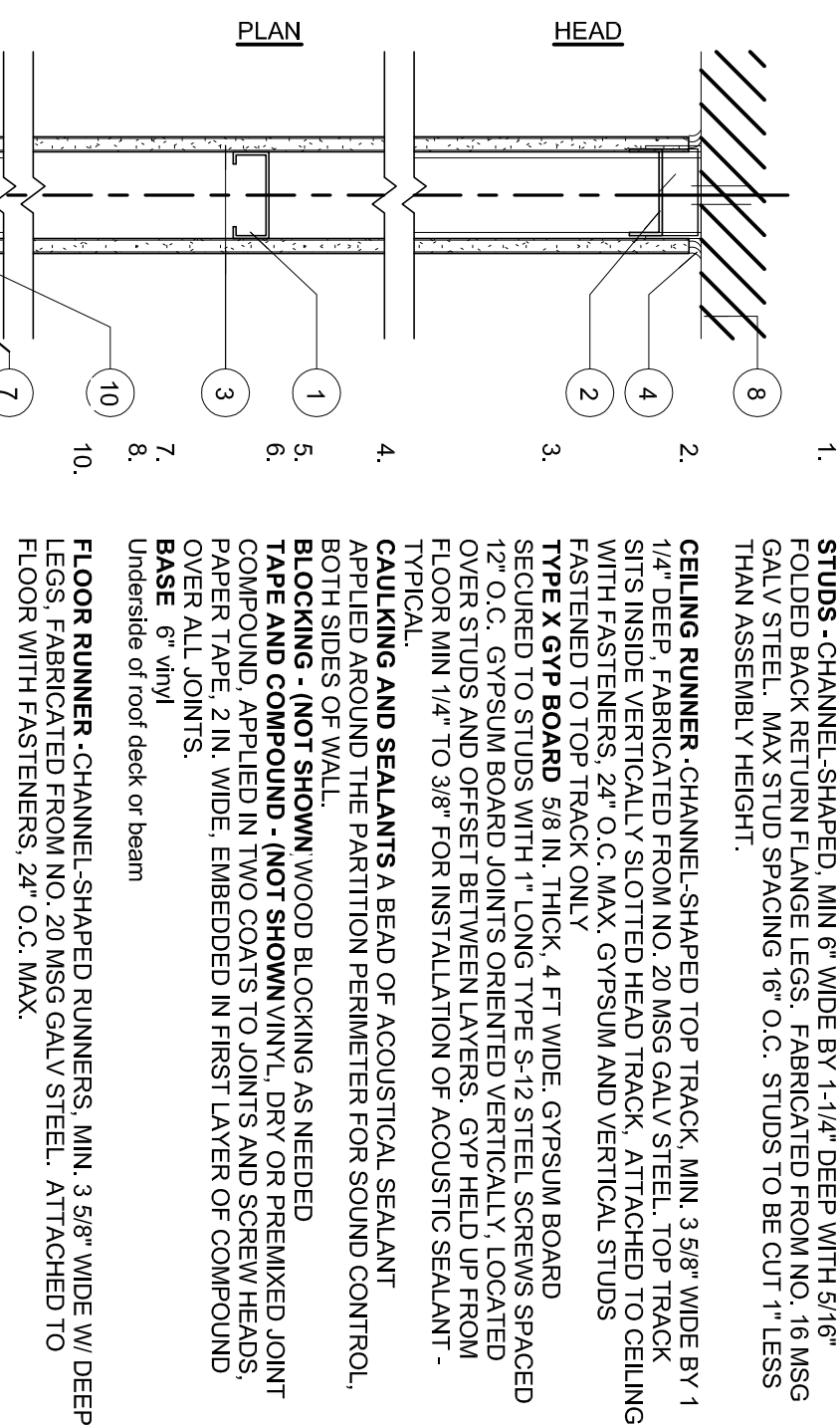
LABEL 1 HR W02A W02B
1 HR NON-BEARING PARTITION
 DESIGN NUMBER - U419
 SOUND - N/A

LABEL 1 HR W02A W02B
1 HR NON-BEARING PARTITION
 DESIGN NUMBER - U419
 SOUND - N/A

3 5/8" 6"

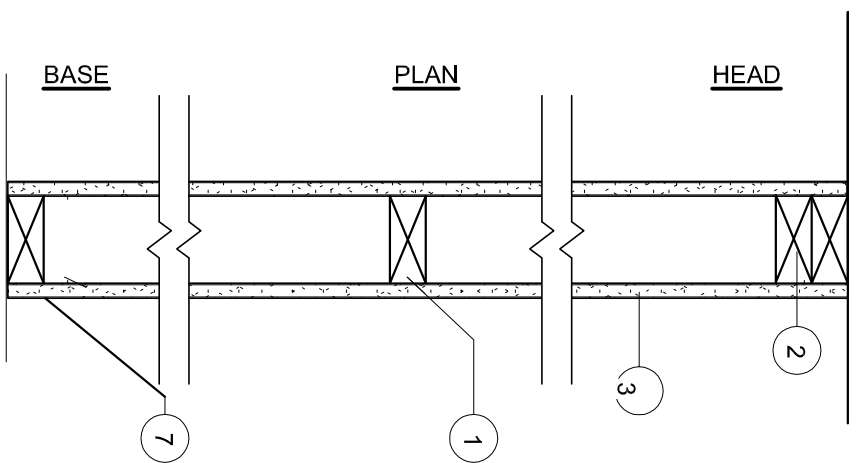
3 5/8" 6"

1. STUDS - 2x4 or 2x6 coordinate with plumbing



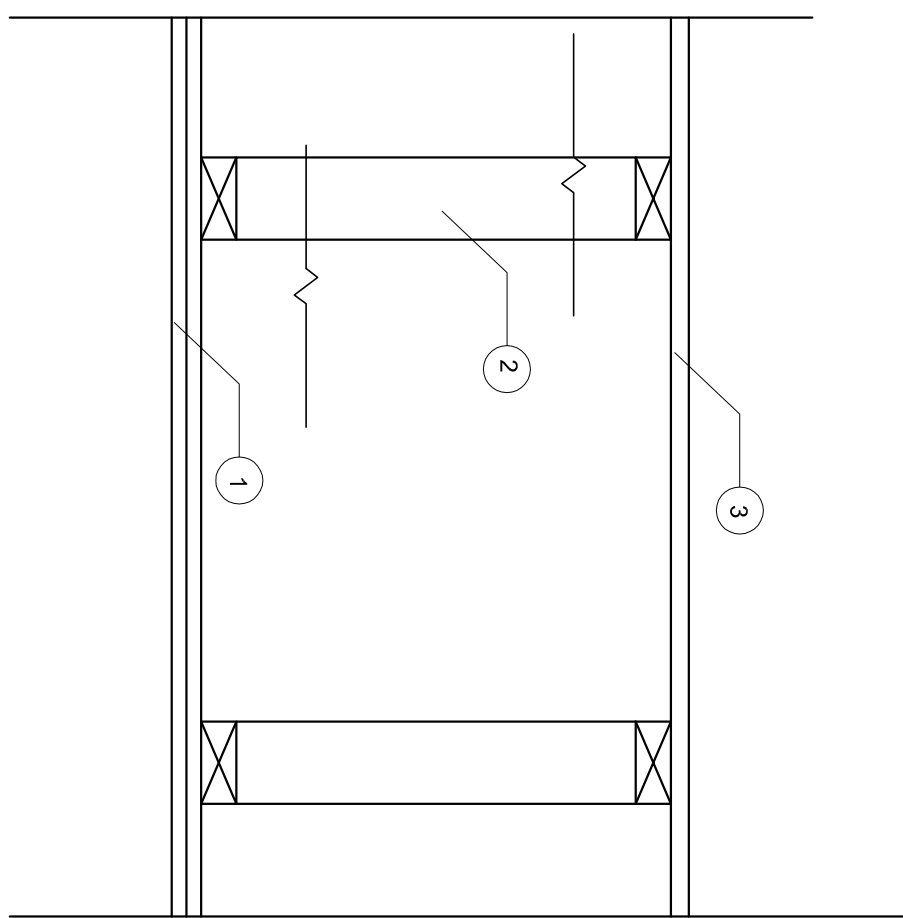
- STUDS - CHANNEL-SHAPED, MIN 6" WIDE BY 1-1/4" DEEP WITH 5/16" FOLDED BACK RETURN FLANGE LEGS. FABRICATED FROM NO. 16 MSG GALV STEEL. MAX STUD SPACING 16" O.C. STUDS TO BE CUT 1" LESS THAN ASSEMBLY HEIGHT.
- CEILING RUNNER - CHANNEL-SHAPED TOP TRACK, MIN. 3 5/8" WIDE BY 1 1/4" DEEP. FABRICATED FROM NO. 20 MSG GALV STEEL. ATTACHED TO CEILING SITS INSIDE VERTICALLY SLOTTED HEAD TRACK. ATTACHED TO CEILING FASTENED TO TOP TRACK ONLY.
- TYPE X GYP BOARD - 5/8 IN. THICK, 4 FT WIDE. GYPSUM BOARD SECURED TO STUDS WITH 1" LONG TYPE S-12 STEEL SCREWS SPACED 24" O.C. STUDS AND JOINTS CHANGES TO 12" O.C. STUDS FROM FLOOR MIN 1/4" TO 3/8" FOR INSTALLATION OF ACOUSTIC SEALANT - TYPICAL.
- CALKING AND SEALANTS A BEAD OF ACOUSTICAL SEALANT TO BE APPLIED TO THE PARTITION PERIMETER FOR SOUND CONTROL. BOTH SIDES OF WALL.
- BLOCKING - (NOT SHOWN) WOOD BLOCKING AS NEEDED.
- TAPE AND COMPOUND - (NOT SHOWN) VINYL DRY OR PREMIUM JOINT PAPER TAPE, 2 IN. WIDE, EMBEDDED IN FIRST LAYER OF COMPOUND OVER ALL JOINTS.
- BASE - 6" w/nyl Underneath of roof deck or beam
- FLOOR RUNNER - CHANNEL-SHAPED RUNNERS, MIN. 3 5/8" WIDE W/ DEEP LEGS. FABRICATED FROM NO. 20 MSG GALV STEEL. ATTACHED TO FLOOR WITH FASTENERS 24" O.C. MAX.

W1



- Double top plate at bearing walls -
- GYP BOARD - 1/2" or 5/8"
- BLOCKING - (NOT SHOWN) WOOD BLOCKING AS NEEDED.
- TAPE AND COMPOUND - (NOT SHOWN) VINYL DRY OR PREMIUM JOINT PAPER TAPE, 2 IN. WIDE, EMBEDDED IN FIRST LAYER OF COMPOUND OVER ALL JOINTS.
- BASE - 6" w/nyl

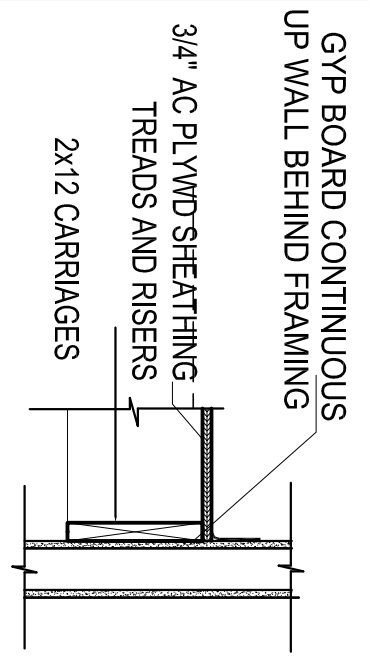
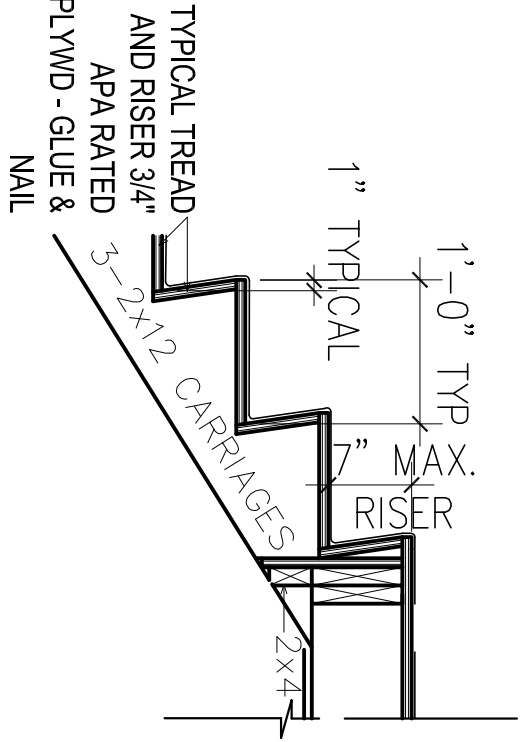
W2



- GA File NO. FC 5912 Generic 1 Hour Fire Gypsum Board Parallel Chord Wood Trusses
- CEILING: Base layer 1/2" Type X gypsum wallboard or gypsum veneer base applied to trusses with 1 1/2" Type S drywall screws 12" o.c. and 1 1/2" Type G drywall screws 12" o.c. placed 5" back from either side of end joints. Joints offset 24" from base layer joints.
 - TRUSSES: Chord and web members fabricated from 2 x 4 lumber with 20 gauge steel connector plates having a minimum length of 6". Plate design values based upon a safety factor of 1.1. Trusses have a minimum depth of 12".
 - FLOORING: 1/2" T&G plywood with exterior glue applied at right angles to top of trusses with 6d common nails 6" o.c. Plywood end joints staggered 40".
- Approx. Ceiling Weight: 4 psf
 Fire Test: FM TC214 - 1 hour, 7-6-78

2 WALL TYPE
 1 1/2" = 1'-0"

3 FLOOR TYPE
 1 1/2" = 1'-0"



5 HANDRAIL DETAILS
 3/4" = 1'-0"

4 STAIR DETAILS
 3/4" = 1'-0"

A1.02	Date: 11-20-2015	Scale: AS NOTED	Revisions: 11-20-2015 SUBMITTED FOR PERMIT	Project: BRICK NORTH DISTILLERY	Architect: ARCHETYPE	Consultant:	Prepared For:	
	WALL & FLOOR TYPES & DETAILS			THOMPSON'S POINT, PORTLAND ME	48 Union Wharf Portland, Maine 04101 (207) 772-6022 Fax (207) 772-4056			