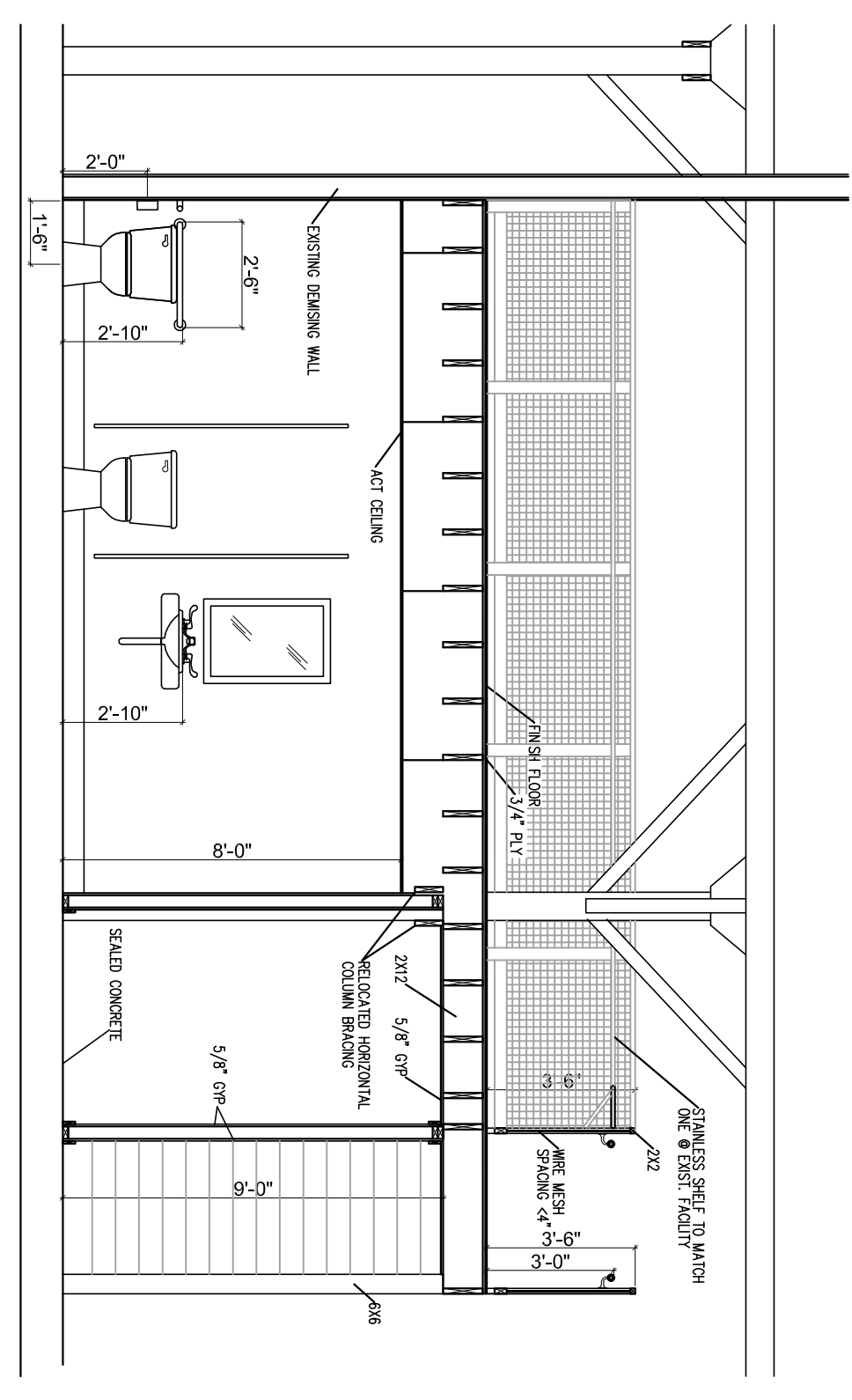
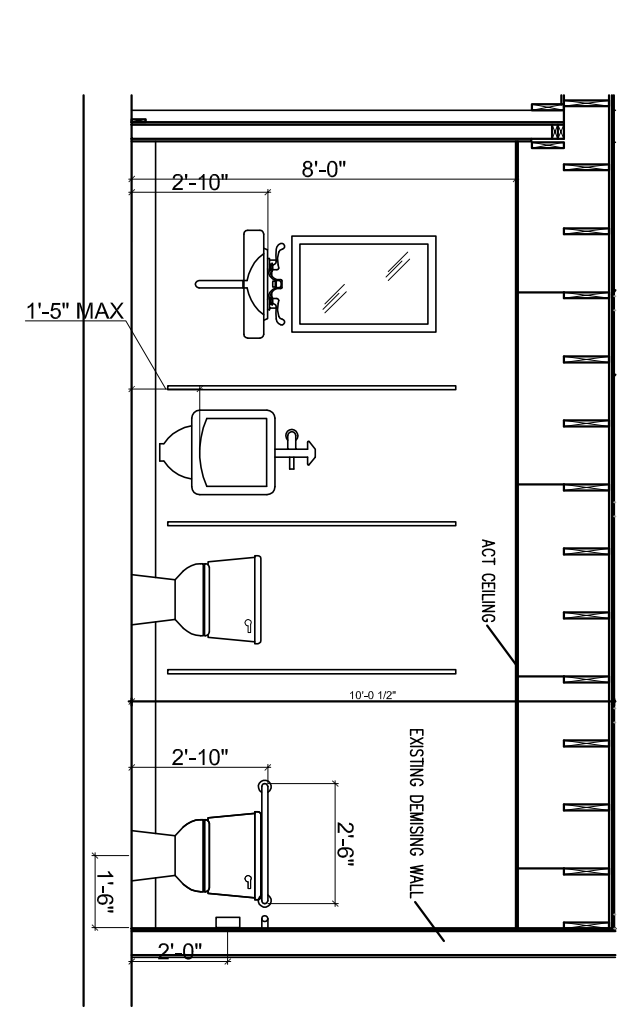


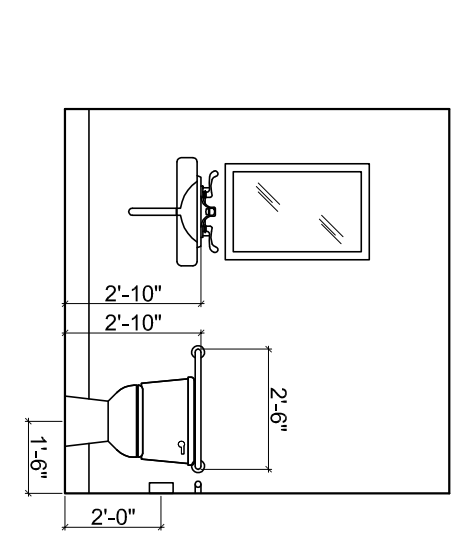
1 SECTION
1/8" = 1'-0"



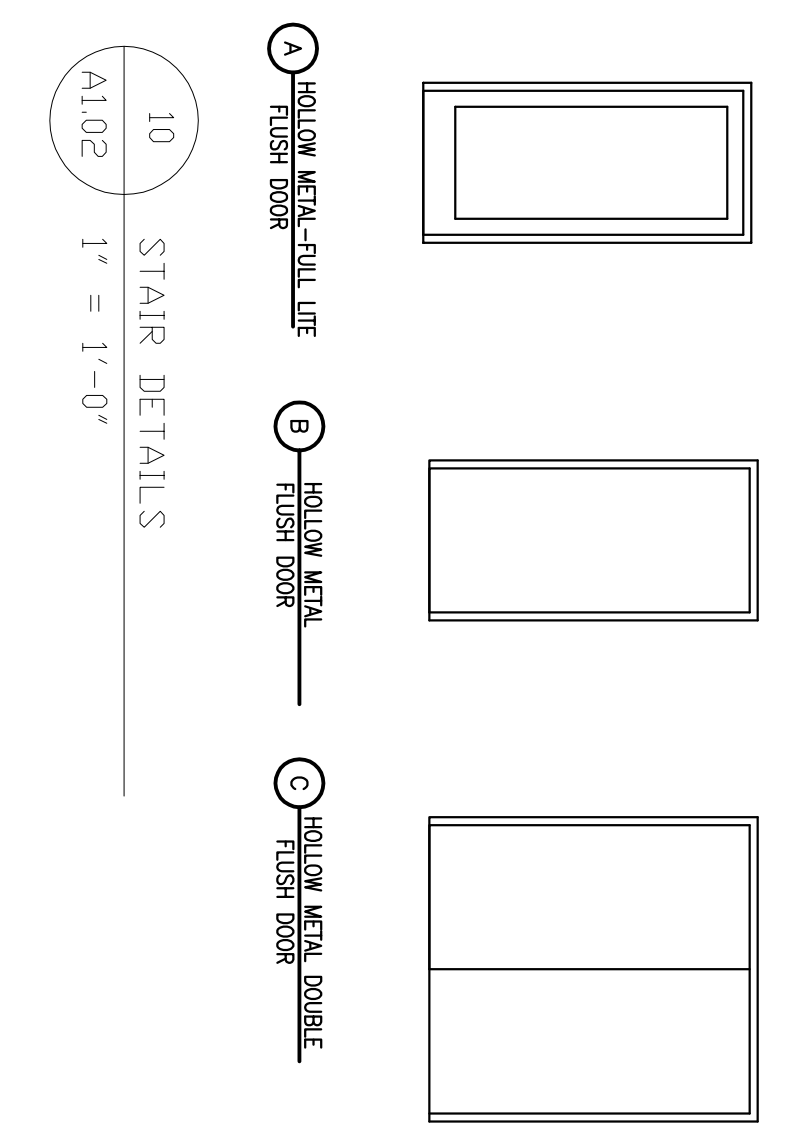
2 SECTION - WOMEN'S/MEZZ
1/4" = 1'-0"



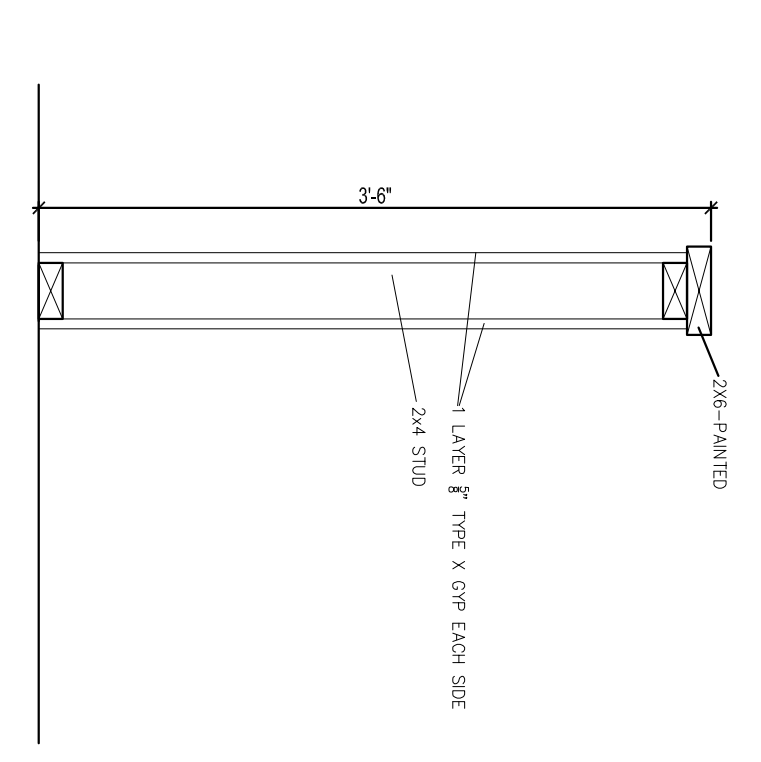
3 MENS INTERIOR ELEV
1/4" = 1'-0"



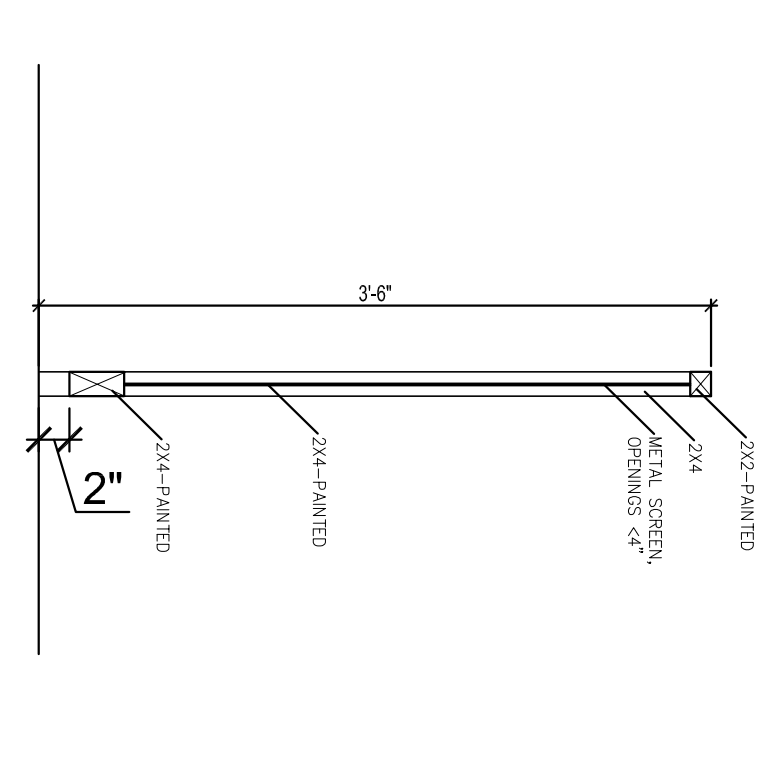
4 OFFICE BATHROOM
1/4" = 1'-0"



10 STAIR DETAILS
1" = 1'-0"

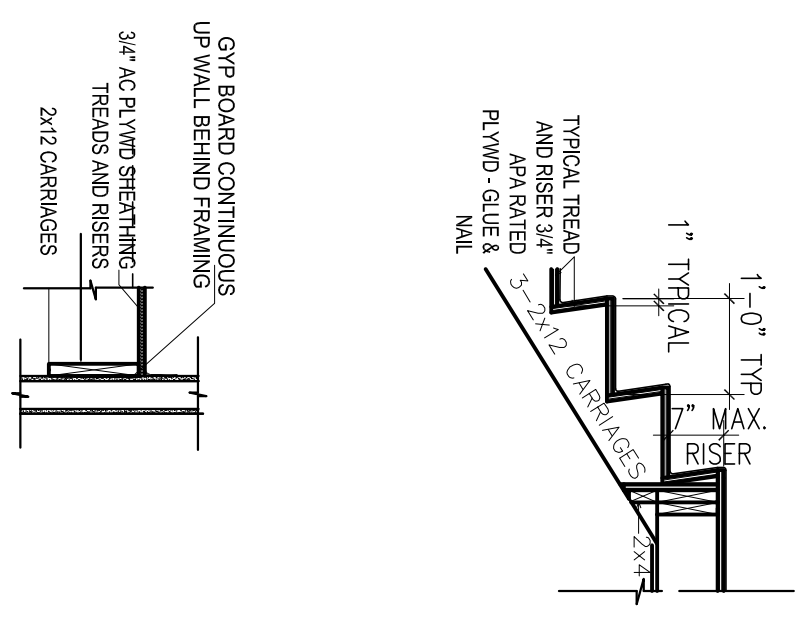


5 WALL TYPES
1" = 1'-0"

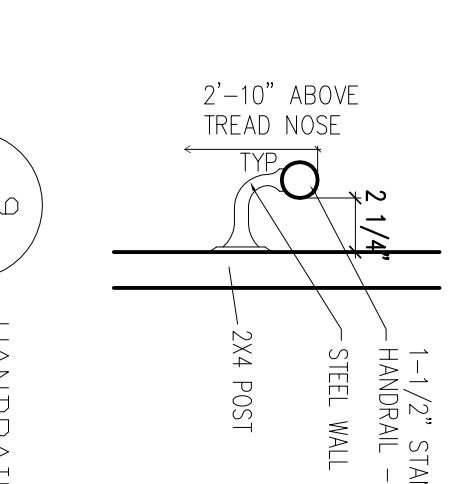


6 HALF WALL
1" = 1'-0"

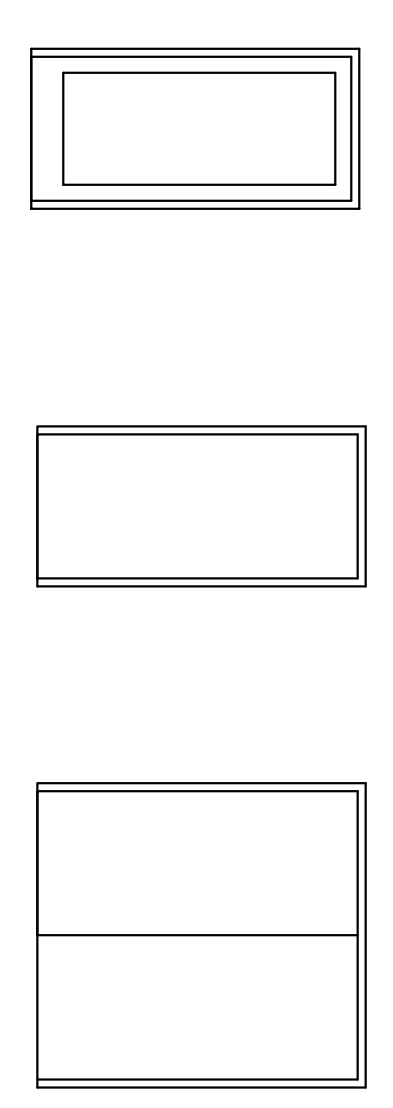
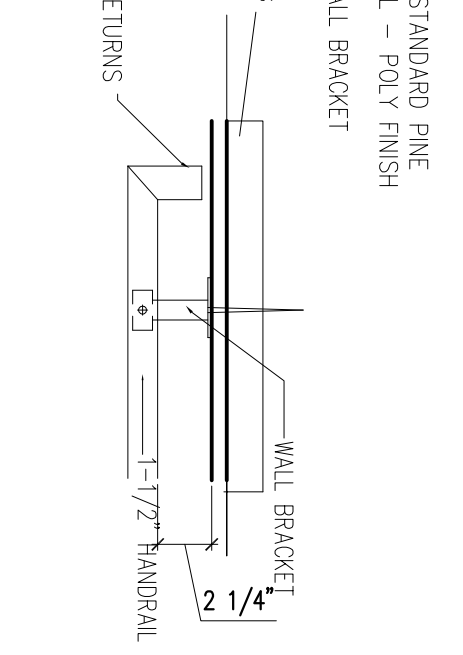
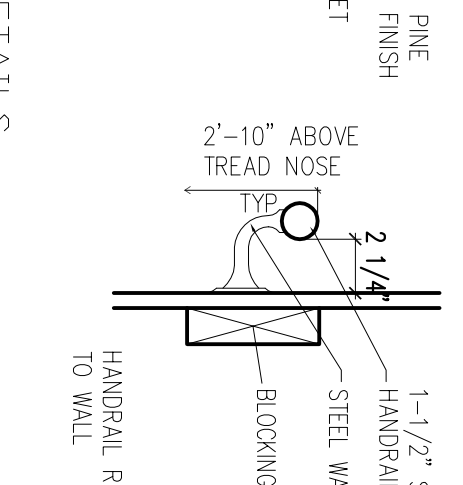
7 MEZZANINE/STAIR GUARD
1" = 1'-0"



8 STAIR DETAILS
1" = 1'-0"

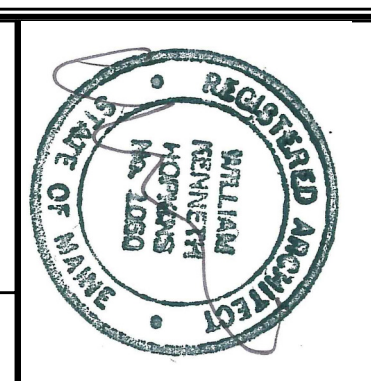


9 HANDRAIL DETAILS
1 1/2" = 1'-0"



DOOR SCHEDULE						
MARK	TYPE	SIZE	F. R.	HARDWARE SET	MAT.	REMARKS
101	A	3'-0" x 7'-6"		PUSH/PULL CLOSER	HM/FULL LITE	
102	B	3'-0" x 7'-6"		EMERGENCY LOCKSET	HM	
103	B	3'-0" x 7'-6"		PUSH/PULL CLOSER	HM	
104	B	3'-0" x 7'-6"		PUSH/PULL CLOSER	HM	
105	B	3'-0" x 7'-6"			HM	INSULATED - BY OTHERS
106	B	3'-0" x 7'-6"			HM	
107	B	3'-0" x 7'-6"		PUSH/PULL CLOSER	HM	
108	C	2'-6" x 7'-0"			HM	INSULATED SLIDER - BY OTHERS
109						

11 STAIR DETAILS
1" = 1'-0"



Prepared For:

Consultant:

Architect:
ARCHETYPE
48 Union Wharf Portland, Maine 04101
(207) 772-6022 Fax (207) 772-4056

Project:
BRICK NORTH
BISSELL BROTHERS
THOMPSON'S POINT,
PORTLAND ME

Revisions:
11-20-2015 SUBMITTED FOR PERMIT

Scale:
AS NOTED

Date:
11-20-2015

A1.02

SECTIONS, DOORS
& DETAILS