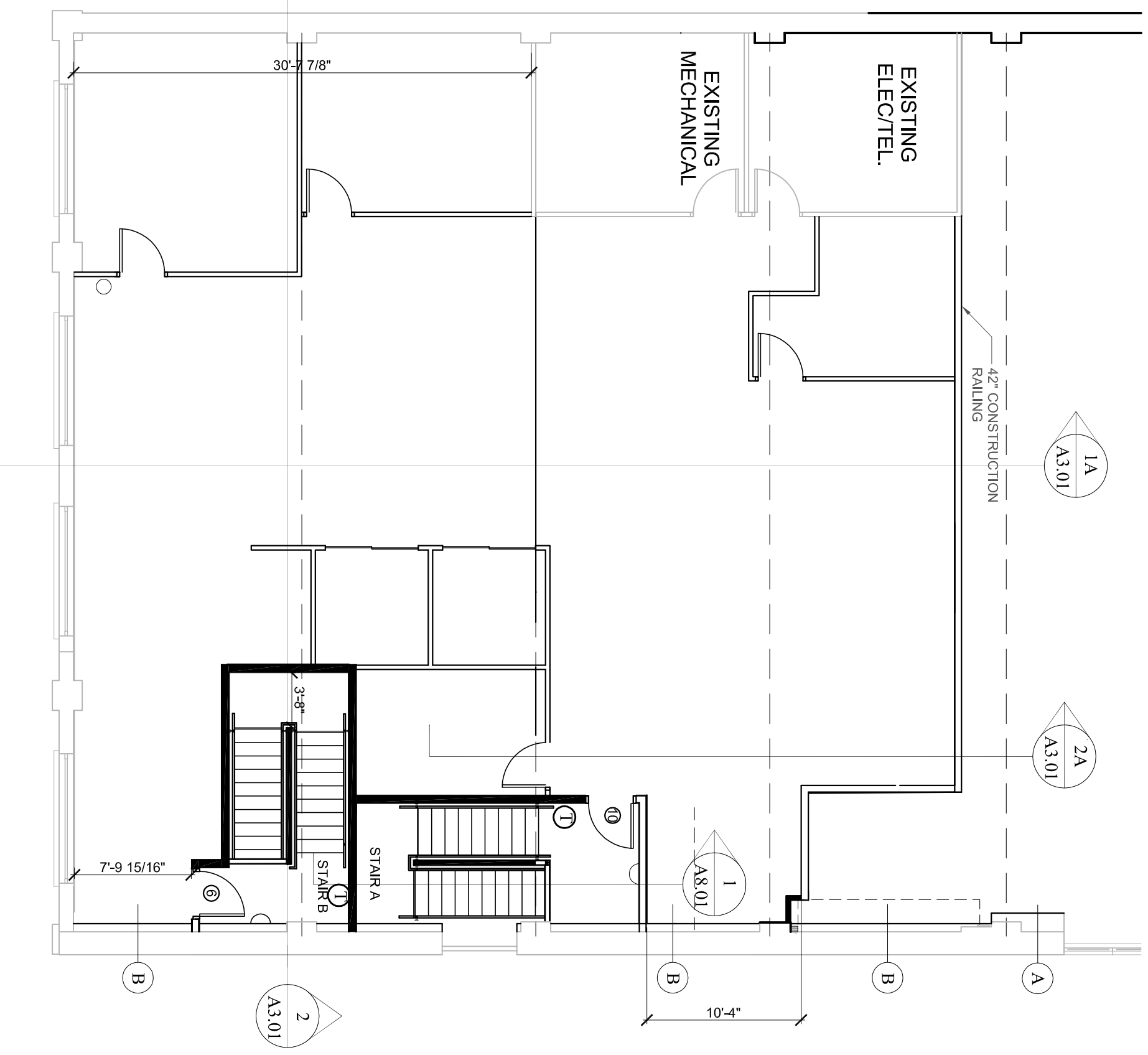
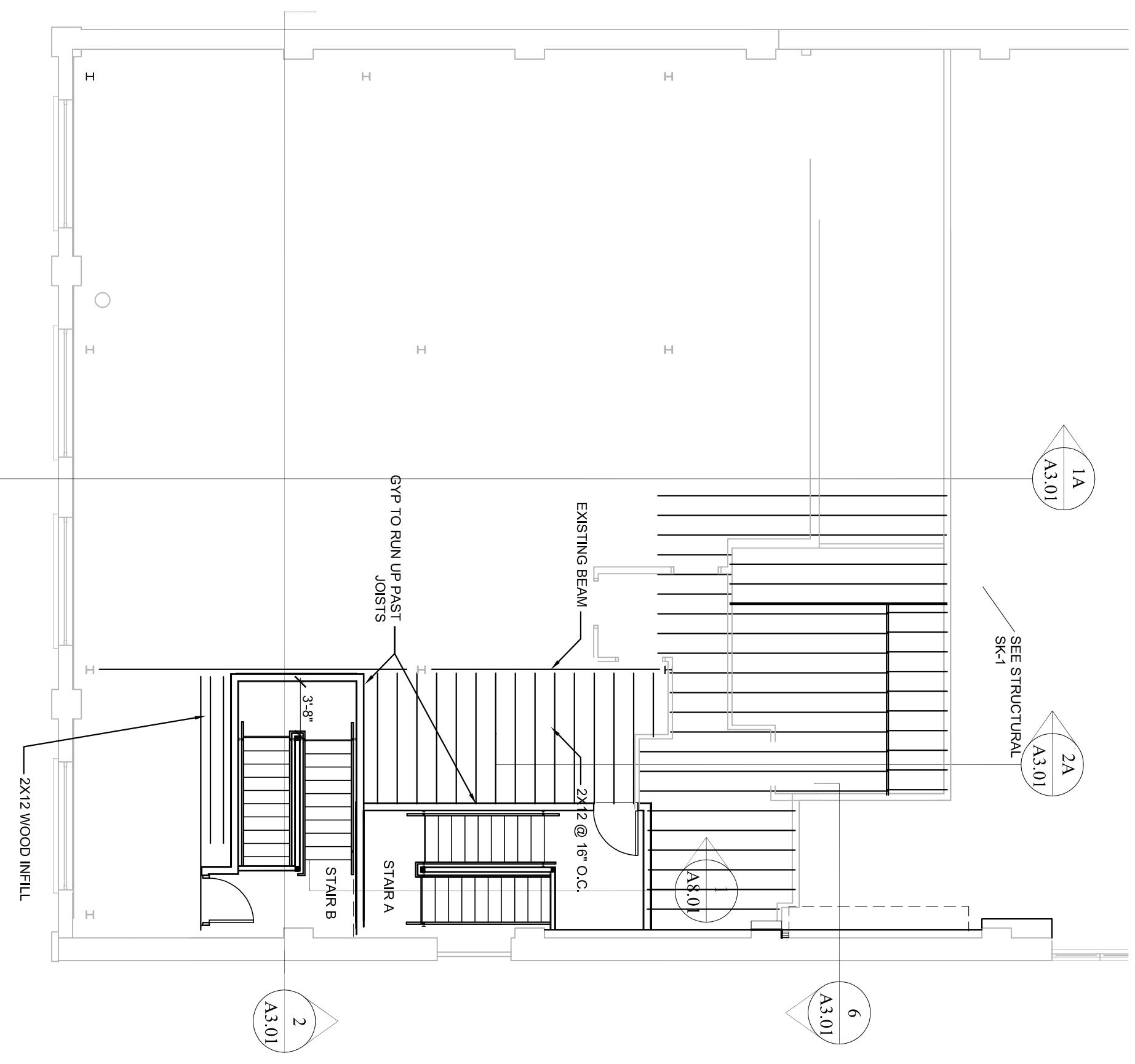


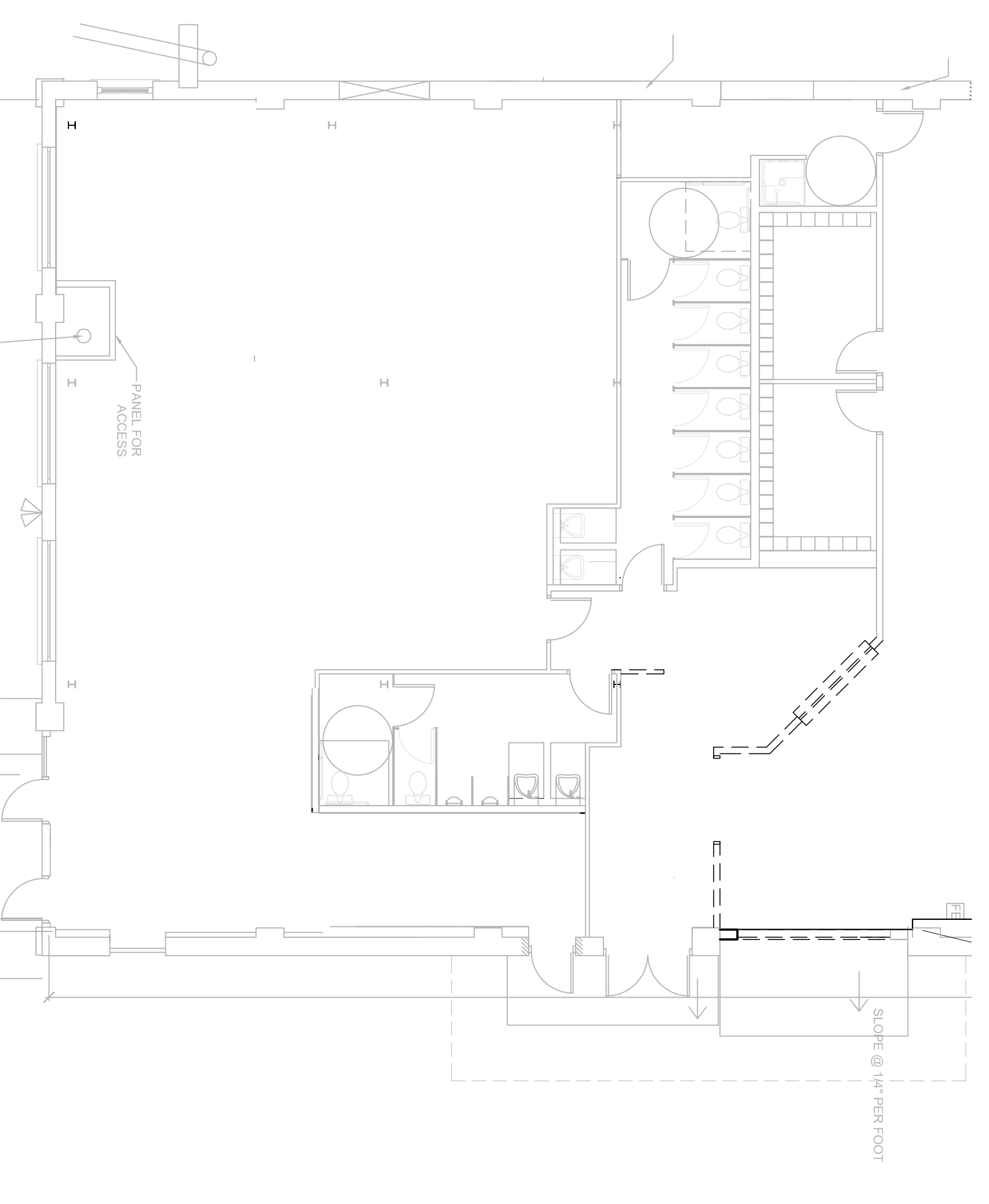
1 FIRST FLOOR PLAN
A1.01 1/8" = 1'-0"



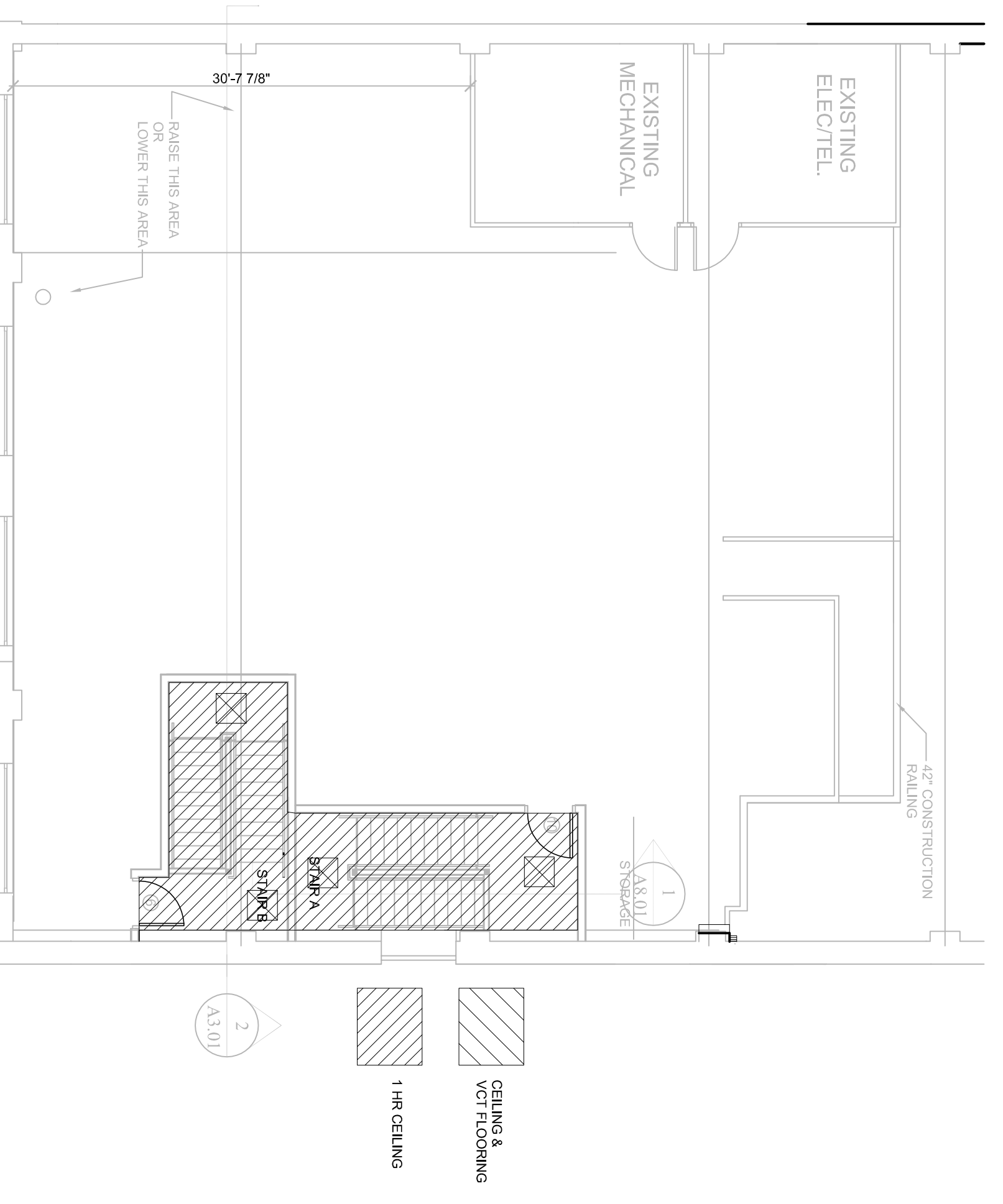
2 SECOND FLOOR PLAN
A1.01 1/8" = 1'-0"



3 FRAMING PLAN
A1.01 1/8" = 1'-0"



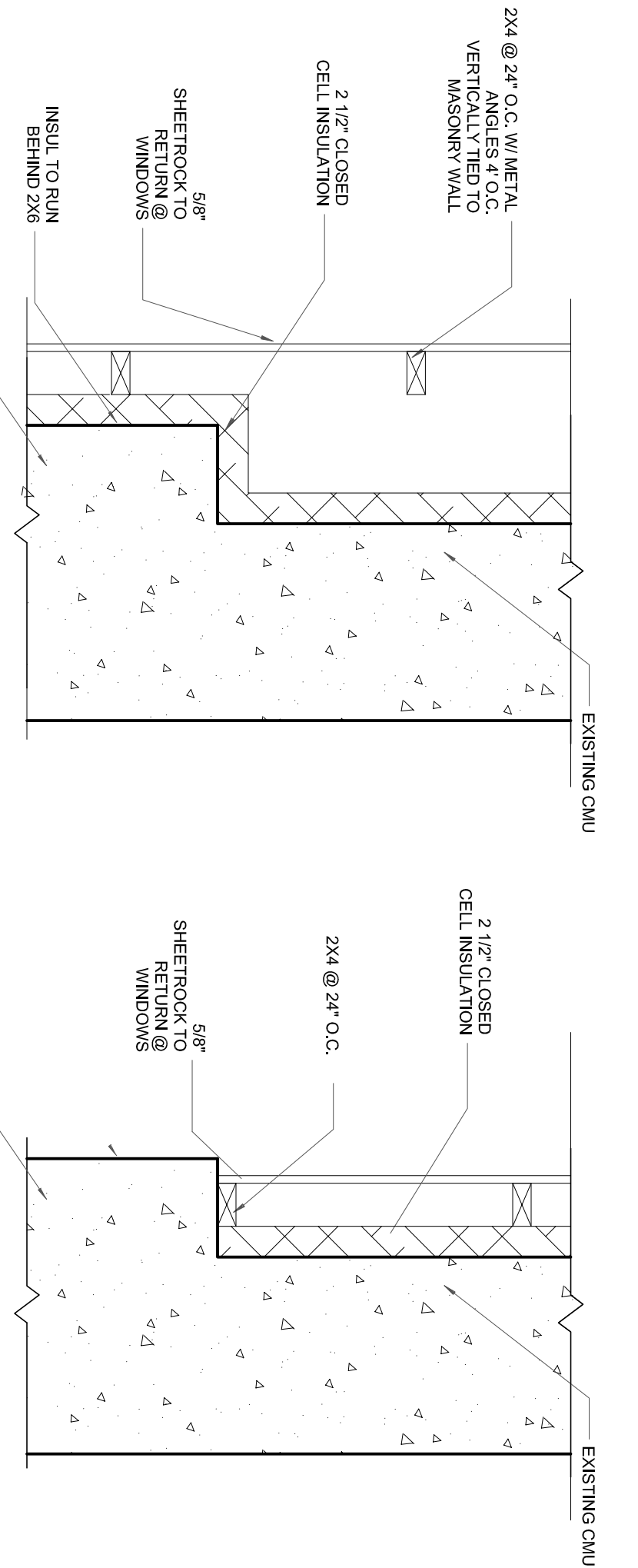
4 DEMO PLAN
A1.01 1/8" = 1'-0"



5 CEILING & FLOORING PLAN
A1.01 1/8" = 1'-0"

DOOR FUNCTION	DIMS	CLOSER	RATING	NOTES
1 PASSAGE	2'-0" X 7'-0"	YES	NONE	LOCK ON VESTIBULE SIDE
2 STOREROOM	3'-0" X 7'-0"	YES	NONE	
3 PANIC	2 (3'-0" X 7'-0")	YES	NONE	
4 PANIC	3'-0" X 7'-0"	YES	NONE	
4a STOREROOM	3'-0" X 4'-0"	YES	NONE	
5 PASSAGE	3'-0" X 7'-0"	YES	NONE	
6 PASSAGE	3'-0" X 7'-0"	YES	NONE	
10 PASSAGE	3'-0" X 7'-0"	YES	NONE	
13 PANIC	3'-0" X 7'-0"	YES	NONE	

6 DOOR SCHEDULE
A1.01



7 WEST WALL TYPE A
A1.01 1" = 1'-0"

8 WEST WALL TYPE B
A1.01 1" = 1'-0"

<h1>A1.01</h1>	Date: 3-10-2015	Scale: 1/8" = 1'-0"	Revisions: 3-26-2015 SUBMITTED FOR PERMIT	Project: BRICK NORTH WEST WING PHASE 2 STAIR & DECK INFILL	Architect: ARCHETYPE	Consultant:	Prepared For:
	FLOOR & FRAMING & DEMO PLANS			THOMPSON'S POINT, PORTLAND ME	48 Union Wharf Portland, Maine 04101 (207) 772-6022 Fax (207) 772-4056		

