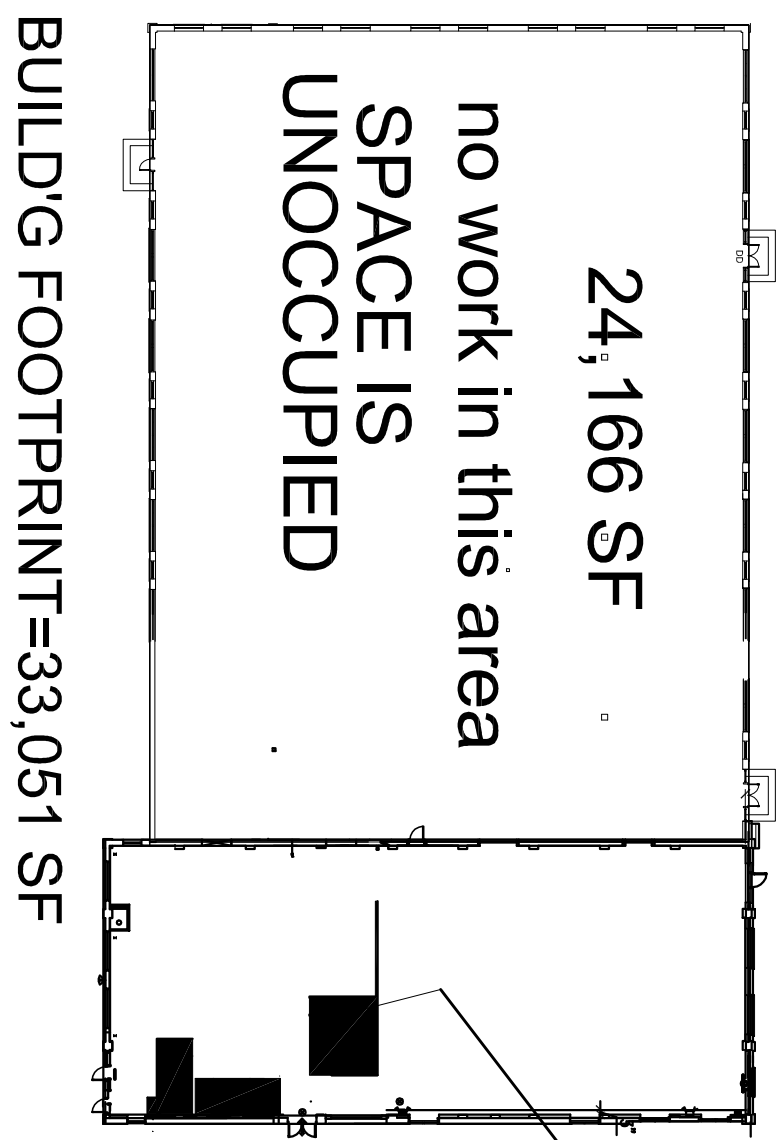
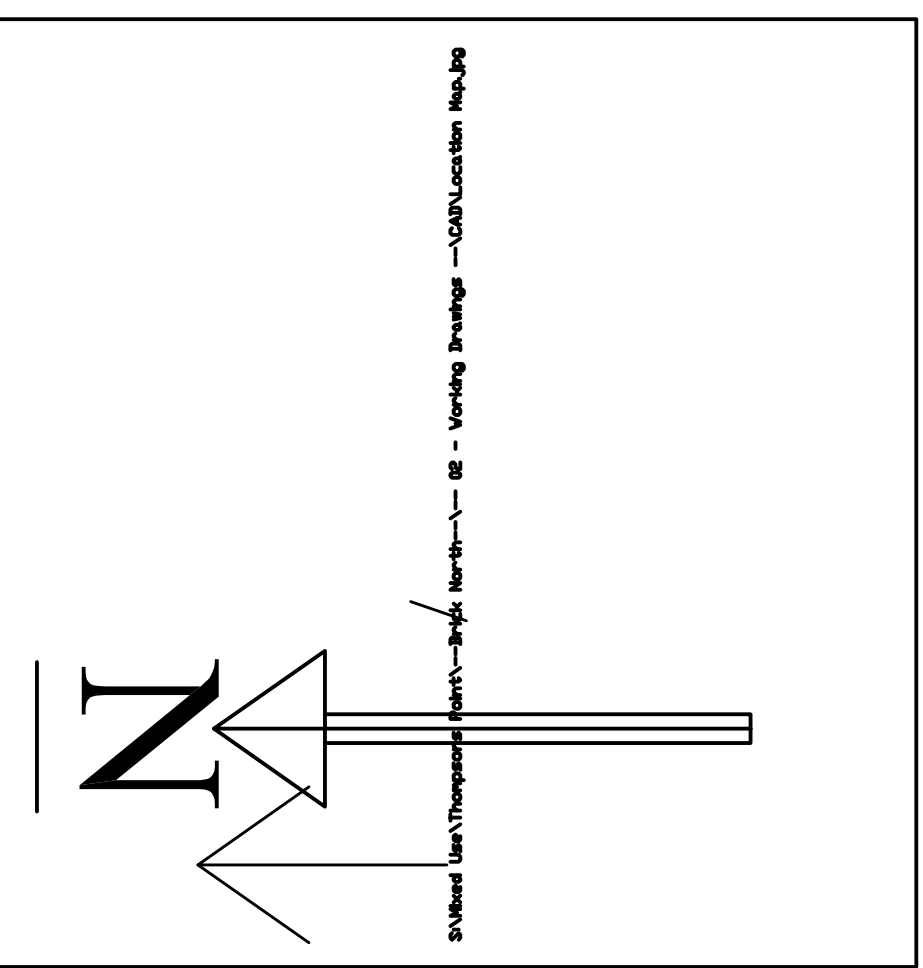
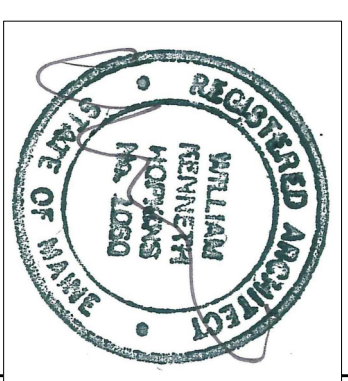


BRICK NORTH - PHASE 2 STAIR & DECK INFILL

Thompson's Point
Portland, ME

3-26-215 -ISSUED FOR PERMIT



DRAWING LIST

ARCHITECTURAL DRAWINGS
A1.01 Floor & Framing & Demo Plans
A3.01 Building Sections & Wall Details
A8.01 Stair Plans & Sections

CODE ANALYSIS

INTERNATIONAL BUILDING CODE 2009
CONSTRUCTION TYPE 3B
SPRINKLED W/ NFPA 13
HEIGHT AND AREA
OCCUPANCY USE IS A-2 AND B

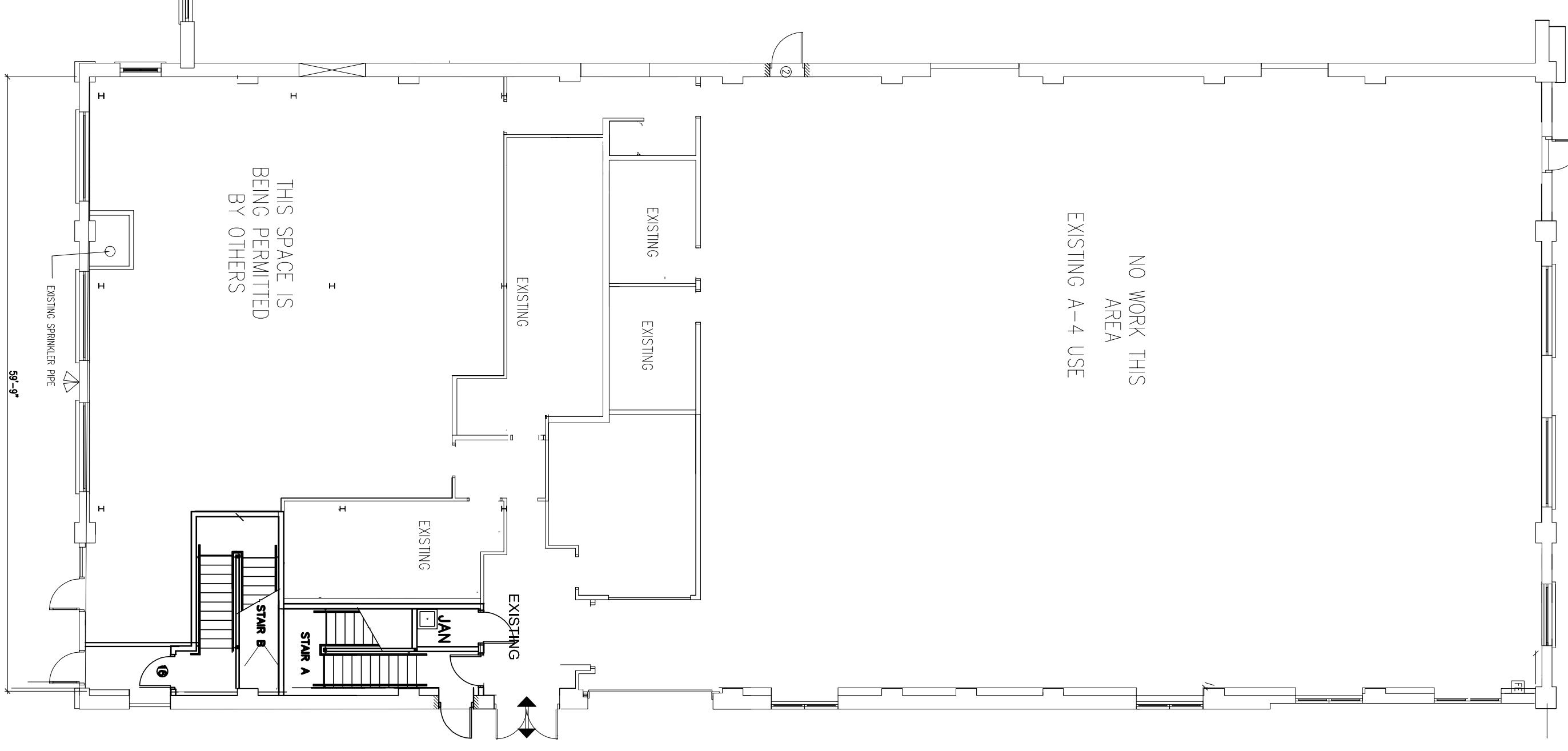
REFERENCE
310
903.0.1.1

FIRE RATINGS
FIRE RESISTANCE RATING FLOOR CONSTRUCTION (0 HOUR)
STAIR RATING = 1 HOUR
MEANS OF EGRESS
EXIT CAPACITY=68" X 5' PER LIN.FT.=340 OCCUPANTS
PANIC HARDWARE REQUIRED WHERE> 50 OCCUPANTS

504.2
7001
7801
7801
7801
7801
1078.1
1078.1

NEPA 101 - 2009
CONSTRUCTION TYPE LIMITATIONS OF TYPE III(200) 12.2.5.1.2
1ST FLOOR = MAX 1000 OCCUPANTS 12.2.5.4.2
2ND FLOOR MAX 300 OCCUPANTS 12.2.2.12.1
ALARM BY SPRINKLER, MANUAL NOT REQUIRED 12.3.4.2.1(b)

1ST FLOOR



2ND FLOOR

