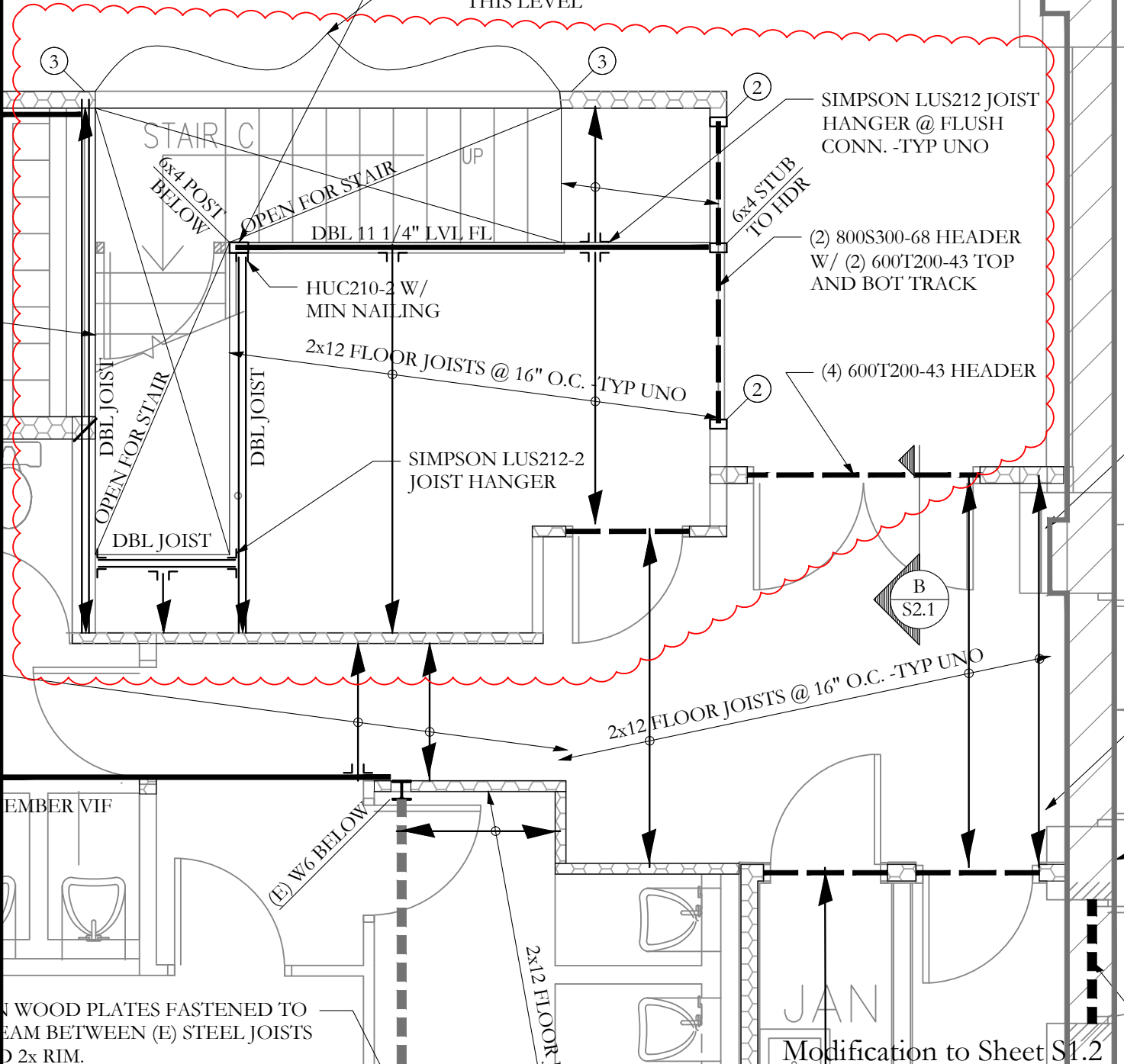


LOAD BEARING WALLS TO BE:  
 @ 16" O.C. MIN METAL STUDS W/  
 TOP AND BOT TRACK -TYP. UNO

@ 16" O.C. METAL STUDS W/  
 TOP AND BOT TRACK -TYP. UNO

POST BEARS ON ABU44 POST BASE  
 ON STRUCTURAL SLAB ON GRADE  
 FASTENED W/ 5/8"Ø x 6" W.A.

LIGHT GAUGE INFILL  
 WALL BELOW STAIR  
 THIS LEVEL



Title: Mezz. Framing Plan Sketch

Brick No.

Portland, ME

Scale: 1/4" = 1'-0"

Date: 11/04/14

SK-1

**Structural Integrity**  
 Consulting Engineers, Inc.

77 Oak Street  
 Portland, ME, 04101  
 p. 207-774-4614  
 f. 566-793-7535  
 www.structuralintegrity.com

BUILD WITH CONFIDENCE  
 ©2011 Structural Integrity Consulting Engineers, Inc.

SI JOB# 14-0141