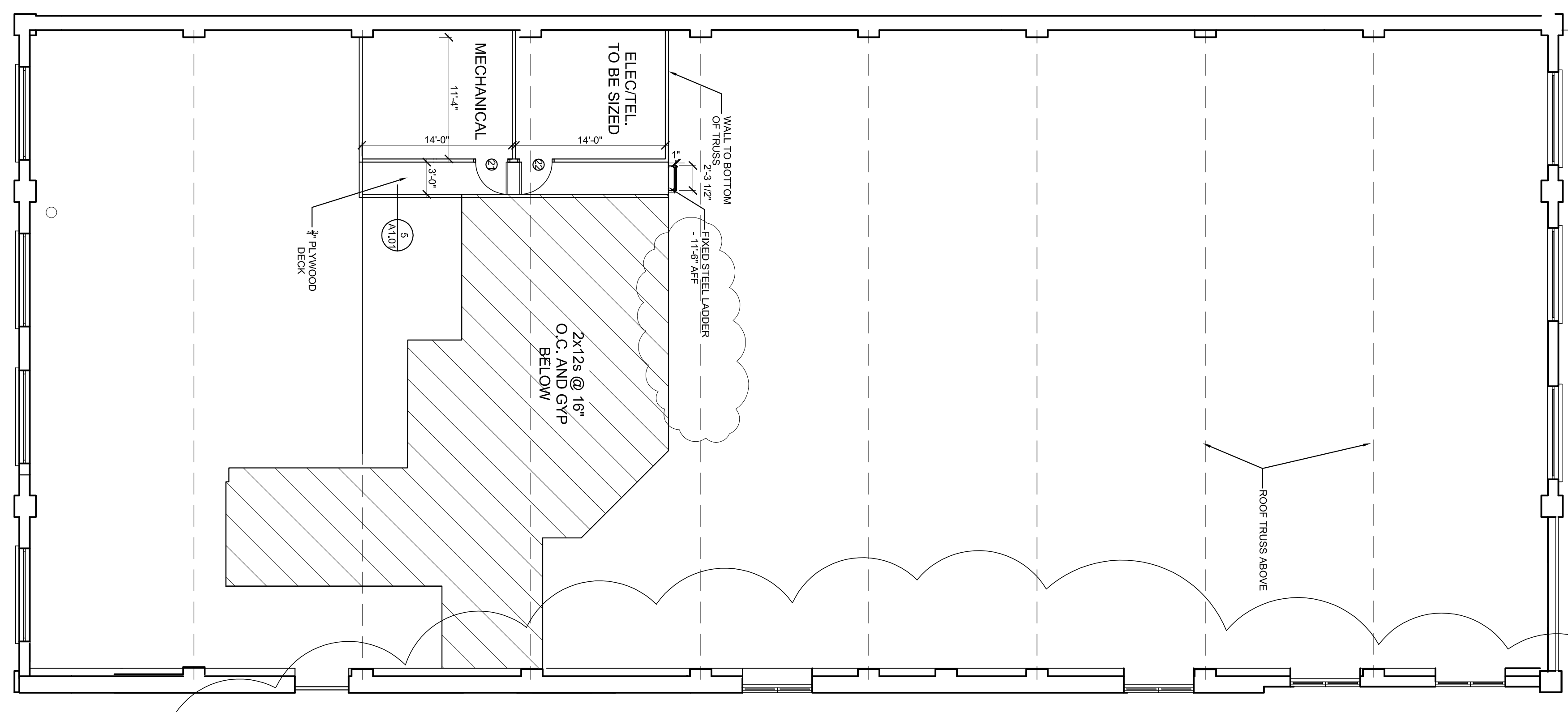
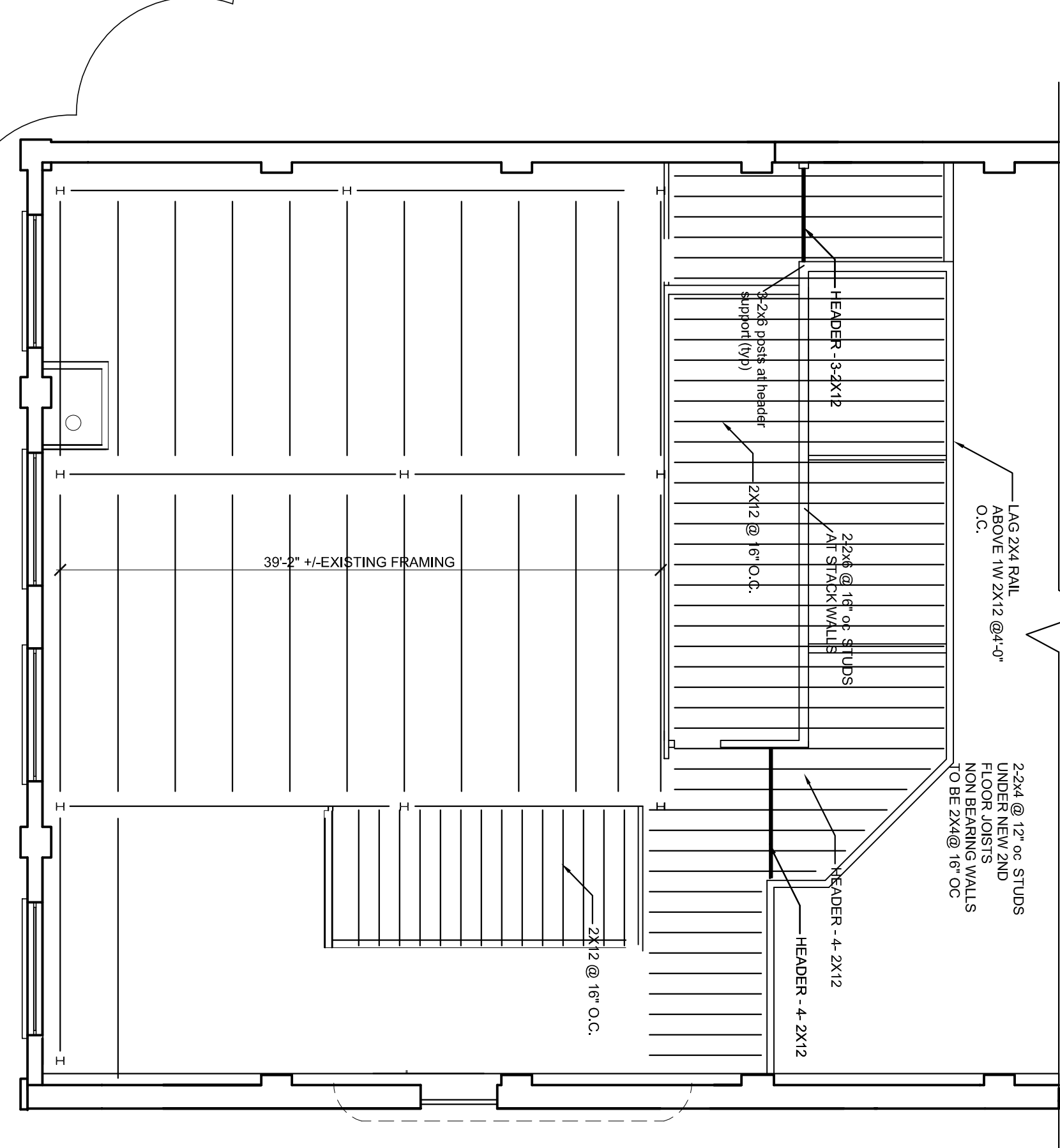


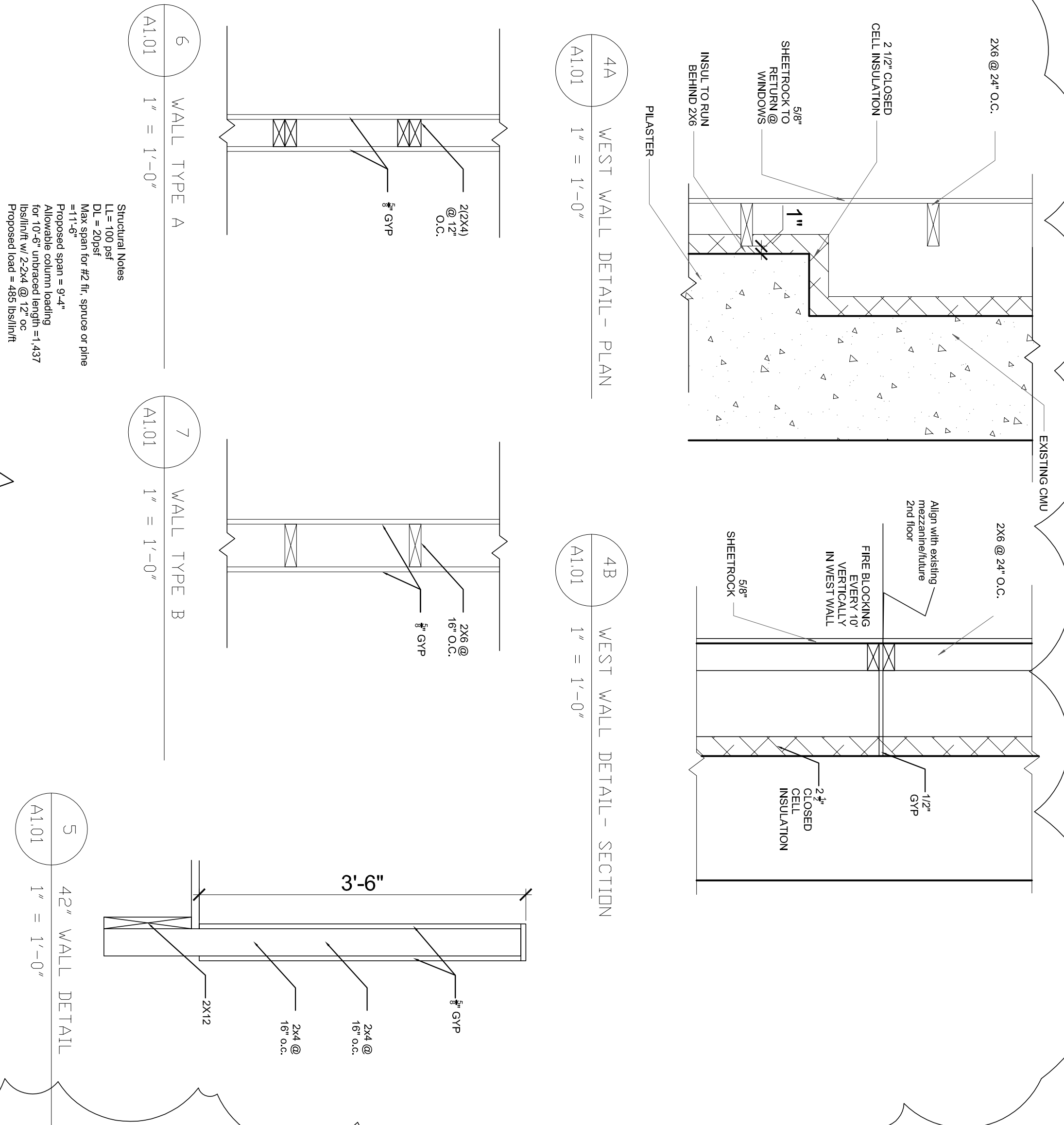
1 FIRST FLOOR PLAN
A1.01 1/8" = 1'-0"



2 SECOND FLOOR PLAN
A1.01 1/8" = 1'-0"



3 SECOND FLOOR FRAMING PLAN
A1.01 1/8" = 1'-0"



6 WALL TYPE A
A1.01 1" = 1'-0"

7 WALL TYPE B
A1.01 1" = 1'-0"

5 WALL DETAIL
A1.01 1" = 1'-0"

4A WEST WALL DETAIL - PLAN
A1.01 1" = 1'-0"

4B WEST WALL DETAIL - SECTION
A1.01 1" = 1'-0"

Date: 9-2-2014

Scale: 1/8" = 1'-0"

Revisions: 9-24-2014

Project: BRICK NORTH WEST WING PHASE I
THOMPSON'S POINT, PORTLAND ME

Architect: ARCHETYPE
48 Union Wharf Portland, Maine 04101
(207) 772-6022 Fax (207) 772-4056

Consultant:

Prepared For:

A1.01

FLOOR & FRAMING PLAN & DETAILS

