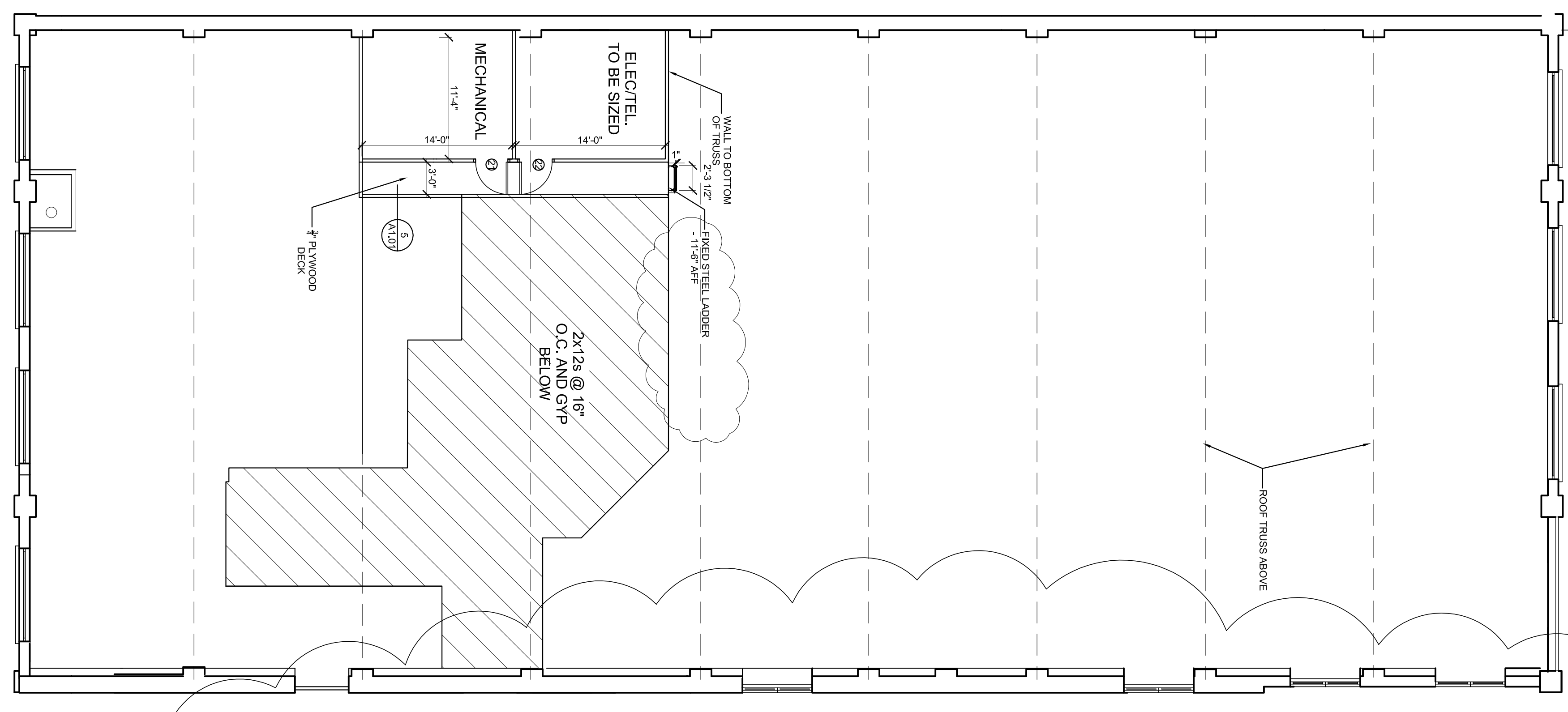
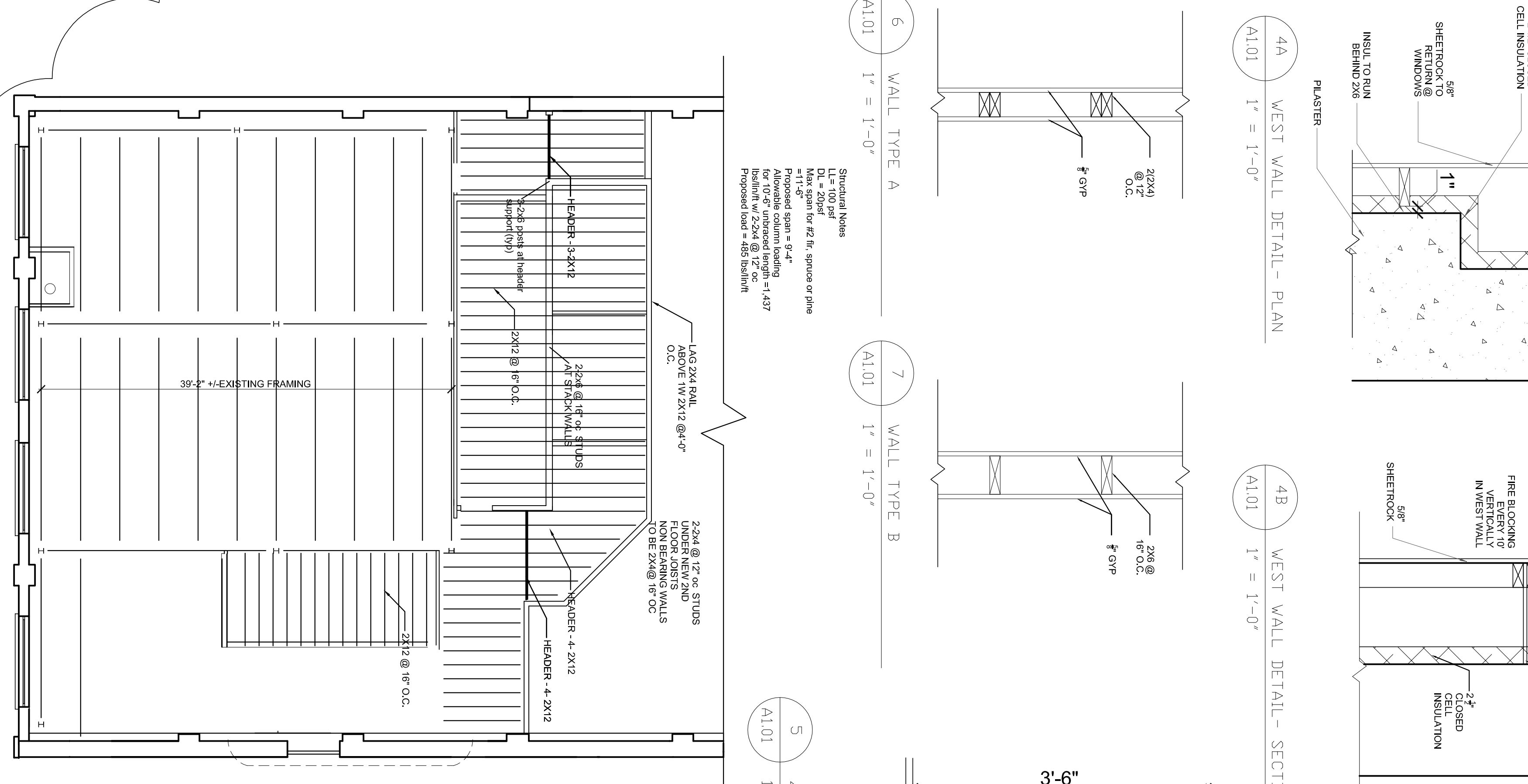


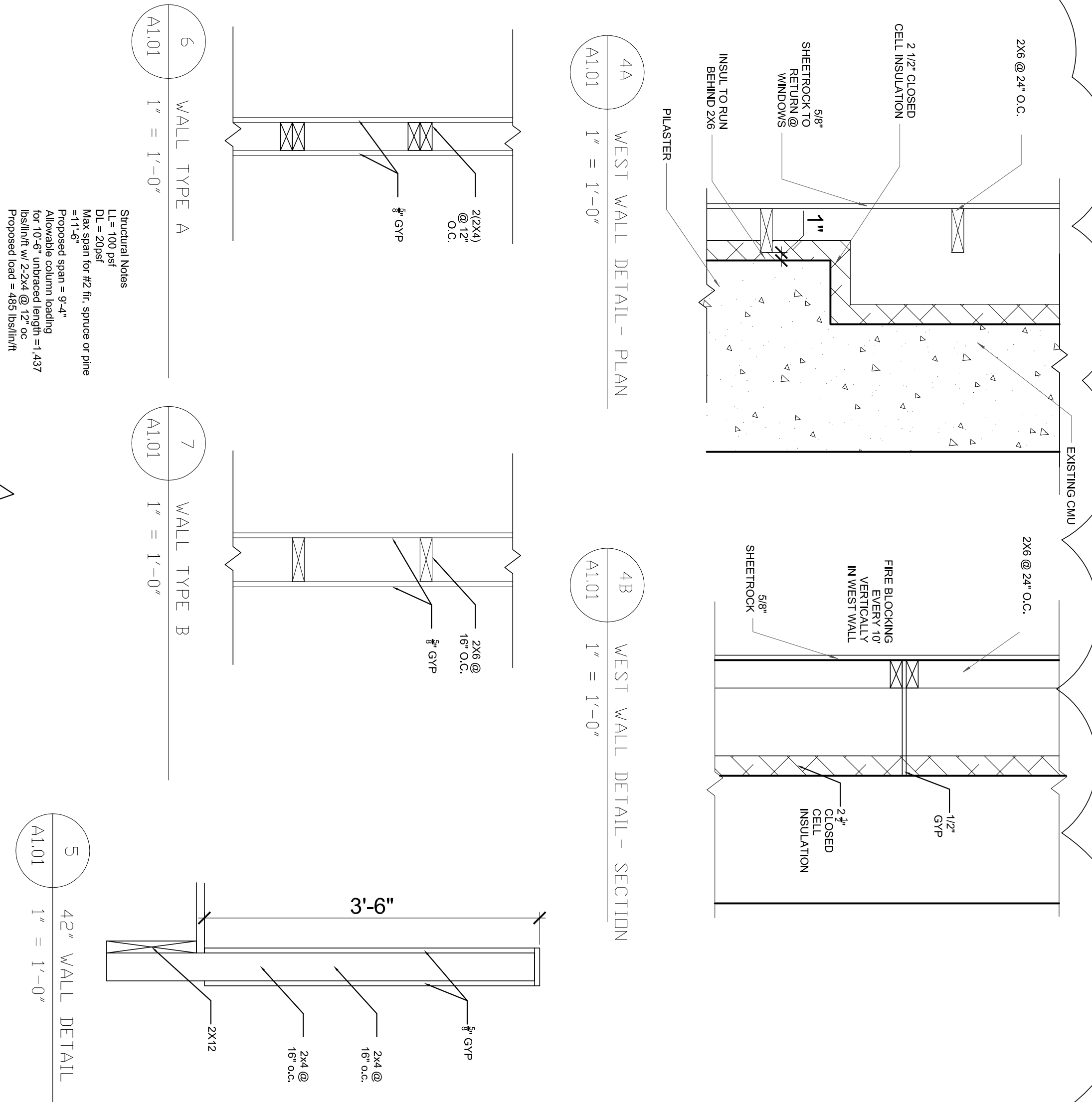
1 FIRST FLOOR PLAN
A1.01 1/8" = 1'-0"



2 SECOND FLOOR PLAN
A1.01 1/8" = 1'-0"



3 SECOND FLOOR FRAMING PLAN
A1.01 1/8" = 1'-0"



<p>A1.01</p>	<p>Date: 9-2-2014</p>	<p>Scale: 1/8" = 1'-0"</p>	<p>Revisions: 9-24-2014</p>	<p>Project: BRICK NORTH WEST WING PHASE I</p>	<p>Architect: ARCHETYPE</p>	<p>Consultant:</p>	<p>Prepared For:</p>	
	<p>FLOOR PLANS</p>	<p>THOMPSON'S POINT, PORTLAND ME</p>	<p>48 Union Wharf Portland, Maine 04101 (207) 772-6022 Fax (207) 772-4056</p>					