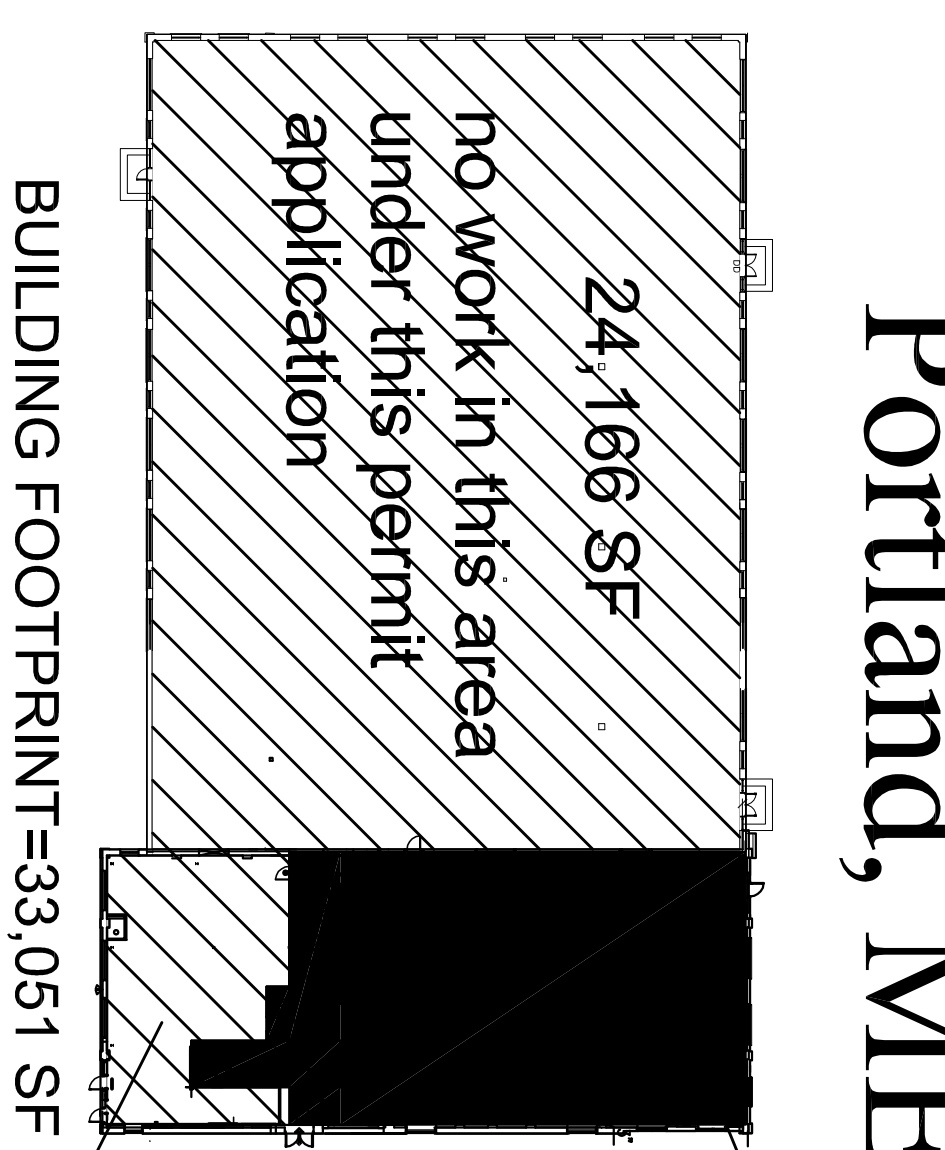
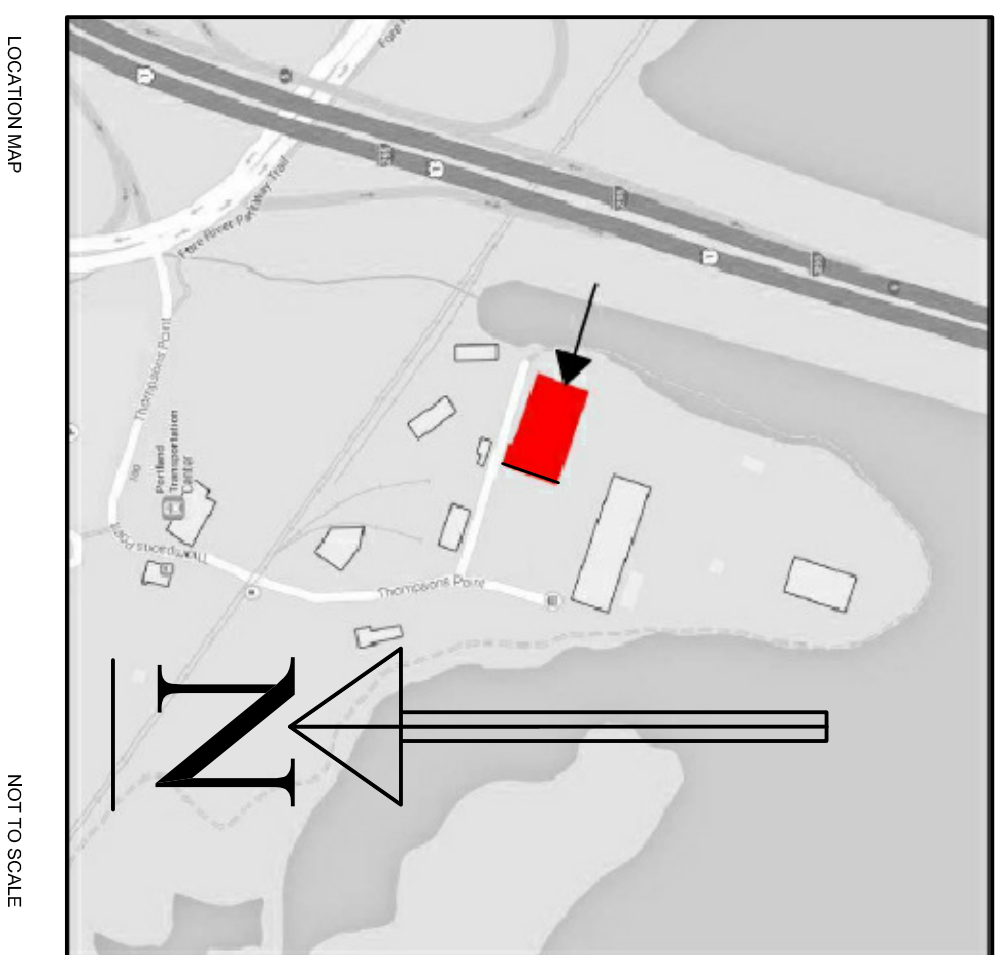


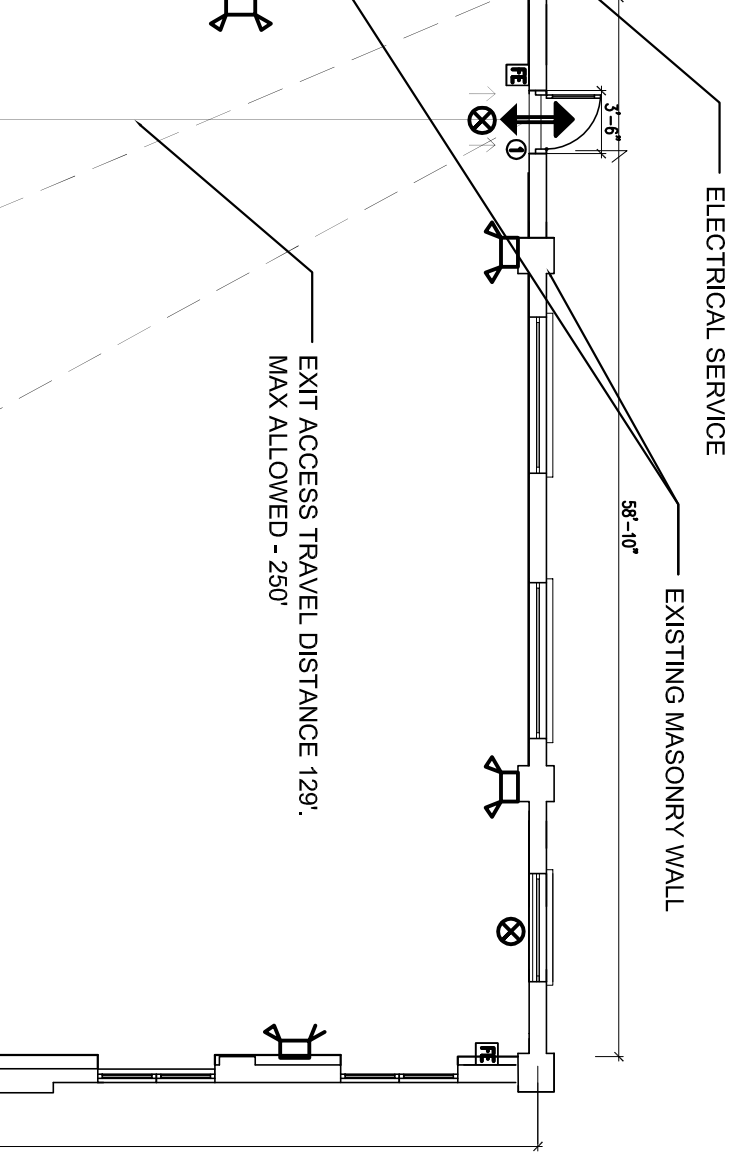
BRICK NORTH - PHASE 1 TENANT FIT-UP

Thompson's Point
Portland, ME

9-2-14 -ISSUED FOR PERMIT



no work in this area
under this permit
application



DOOR FUNCTION	CLOSER	RATING
1	PASSAGE	2 HR
2	PASSAGE	YES
3	PRIVACY	NONE
4	PASSAGE	NONE
5	PASSAGE	NONE
6	PASSAGE	NONE
7	PANIC	1 HR
8	PANIC	1 HR
9	PANIC	1 HR
10	PANIC	NONE
11	PANIC	NONE
12	PASSAGE	1 HR
13	PRIVACY	NONE
14	PANIC	1 HR
15	PANIC	NONE

REFERENCE

- 310
- 903.0.1.1

RELEVANT CODES

INTERNATIONAL BUILDING CODE 2009
CONSTRUCTION TYPE 3B
SPRINKLED W/ NFPA 13
HEIGHT AND AREA
OCCUPANCY USE IS A-4
FRONTAGE INCREASE= (387 LFT/387LFT-0.25) 24 FT/30= 6
A-4 =9500 SF + (9500 X2)(19500X6) = 33,700 SF
BUILDING FOOTPRINT IS 33,051 SF
ALLOWABLE SF OF 33,700 IS GREATER THEN EXISTING SF OF 33,051
A-4 USE DOES NOT REQUIRE SEPERATION FROM REST OF BUILDING
ALLOWABLE HEIGHT= 55 FT, EXISTING =40'-4" FT
FIRE RATINGS
FIRE RESISTANCE RATING STRUCTURAL FRAME (0 HOUR)
FIRE RESISTANCE RATING OF EXTERIOR BEARING WALLS 2 HOURS
FIRE RESISTANCE RATING NON-BEARING WALLS AND PARTITIONS (0 HOURS)
FIRE RESISTANCE RATING FLOOR CONSTRUCTION (0 HOUR)
FIRE RESISTANCE RATING ROOF CONSTRUCTION (0 HOUR)
CORRIDOR RATING (0 HOURS)
STAIR RATING = 1 HOUR

- ### ARCHITECTURAL DRAWINGS
- A1.01 Floor Plan
 - A1.02 Framing Plan & RCP
 - A3.01 Building Sections
 - A4.01 Interior Elevations & Door Schedule
 - AD1.01 Demolition Plan
- ### MEP DRAWINGS
- E1.01 Lighting Floor Plans
 - E2.01 Power Floor Plans
 - E3.00 One Line Diagrams
 - E3.01 One Line Diagrams
 - E3.02 One Line Diagrams
 - E3.03 Electrical Notes, Legend & Abbreviations
 - M1 Mechanical Plans
 - M2 Plumbing Plans

CONTACTS

Developer:
Thompson's Point
Development
55 Lisbon Street
Lewiston, ME
04240
(207) 347 1614

Architect:
Arctetype Architects
48 Union Wharf
Portland, ME
04101
(207) 772 6022

Civil Engineer:
Fav, Spofford & Thorndike
778 Main Street, Suite 8
South Portland, ME
04100

MEANS OF EGRESS
CAPACITY OF ASSEMBLY = 2' X 400 OCCUPANTS = 80'
NO LESS THAN 50% CAPACITY OF EXIT =40
MINIMUM REQUIRED CORRIDOR WIDTH = 44"
ROOF ACCESS: NA

DRAFTSTOPPING OR SPRINKLE CONCEALED SPACES NA
STANDPIPE (<30 FT ABOVE GRADE) NA
FIRE DEPT. CONNECTION REQUIRED NA

717.2.2 (EX. 2)
903.3.1
903.3.6 (AS DIRECTED BY FIRE)

REFERENCE

6.1,14.3

NFPA 101 - 2009
ASSEMBLY OCCUPANCY
SPRINKLED W/NFPA 13
CONSTRUCTION TYPE III(000)
CONSTRUCTION TYPE LIMITATIONS OF TYPE III(200) 12.2.5.1,2
1ST FLOOR = MAX 1000 OCCUPANTS 12.2.5.4,2
2ND FLOOR MAX 300 OCCUPANTS 12.2.2,12.1
COMMON PATH 20' > 50 OCCUPANTS ; 75'<50'
DEAD END CORRIDOR < 20'
AREA OF REFUGE NOT REQUIRED
CAPACITY OF ASSEMBLY = 2' X 400 OCCUPANTS = 80'
NO LESS THAN 50% CAPACITY OF EXIT =40"
FINISHES IN BLDG TO BE CLASS A OR B 12.3.3
ALARM BY SPRINKLER, MANUAL NOT REQUIRED 12.3.4.2.(b)

PLUMBING CALCULATIONS
POSTED OCCUPANCY: 420
FIXTURE COUNT UPC
200 MALES - 2 WC & 2 URINALS
200 FEMALES - 8 WC
**LIMITED POSTED OCCUPANCY
DETERMINED BY PLUMBING COUNT

LEGEND

	EXIT LIGHT
	EMERGENCY LIGHT
	FIRE EXTINGUISHER
	1 HR WALL
	2 HR WALL

LIFE SAFETY PLAN

