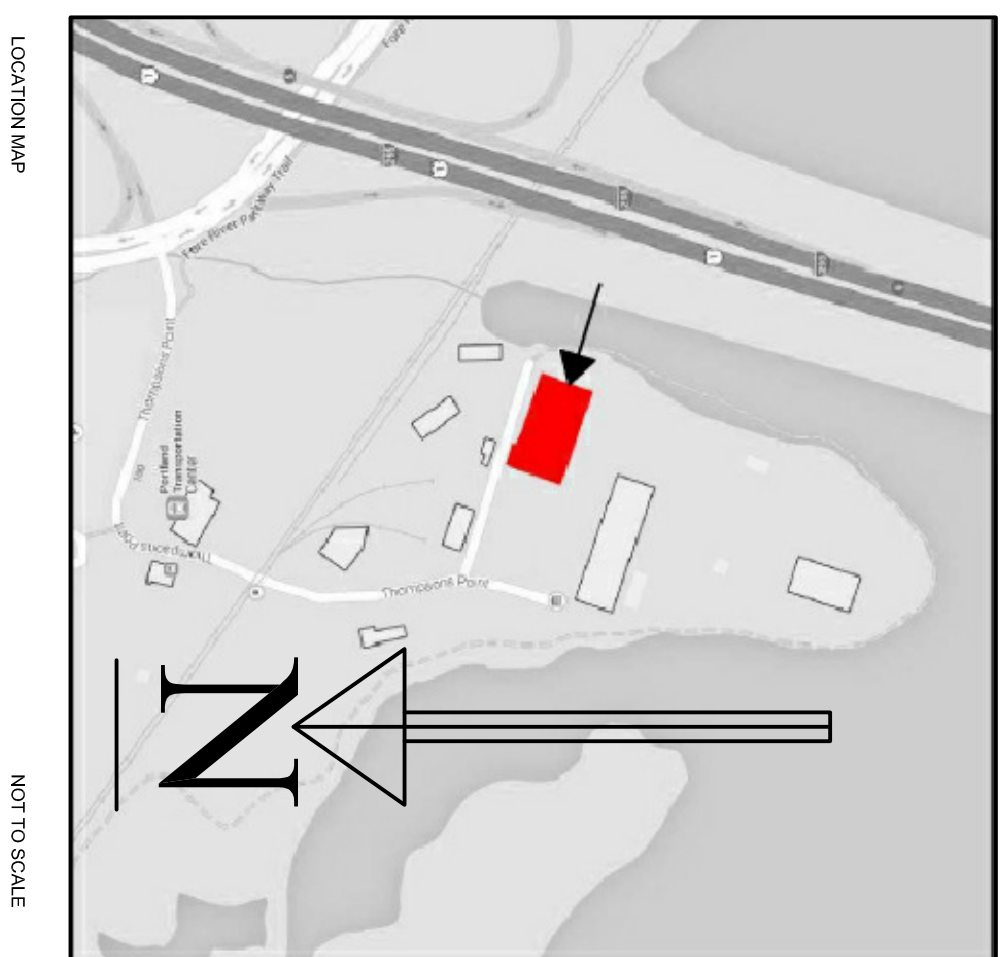


# BRICK NORTH - PHASE 1 TENANT FIT-UP

Thompson's Point  
Portland, ME

9-2-14 -ISSUED FOR PERMIT



NOT TO SCALE

24,166 SF  
no work in this area  
under this permit  
application

AREA  
OF  
WORK  
8885  
SF

BUILDING FOOTPRINT=33,051 SF

## DRAWING LIST

- ARCHITECTURAL DRAWINGS  
 A1.01 Floor Plan  
 A1.02 Framing Plan & RCP  
 A3.01 Building Sections  
 A4.01 Interior Elevations & Door Schedule  
 AD1.01 Demolition Plan  
 MEP DRAWINGS  
 E1.01 Lighting Floor Plans  
 E2.01 Power Floor Plans  
 E3.00 One Line Diagrams  
 E3.01 One Line Diagrams  
 E3.02 One Line Diagrams  
 E3.03 Electrical Notes, Legend & Abbreviations  
 M1 Mechanical Plans  
 M2 Plumbing Plans

## RELEVANT CODES

INTERNATIONAL BUILDING CODE 2009  
 CONSTRUCTION TYPE 3B  
 SPRINKLED W/ NFPA 13  
 HEIGHT AND AREA  
 OCCUPANCY USE IS A-4  
 FRONTAGE INCREASE= (387 LFT/ 387LFT-0.29) 24 FT/30= 6  
 A-4 =9500 SF + (9500 X2)/(9500X8) = 33,700 SF  
 BUILDING FOOTPRINT IS 33,051 SF  
 ALLOWABLE SF OF 33,700 IS GREATER THEN EXISTING SF OF 33,051  
 A-4 USE DOES NOT REQUIRE SEPERATION FROM REST OF BUILDING  
 ALLOWABLE HEIGHT= 55 FT, EXISTING =40'-4" FT  
 FIRE RATINGS  
 FIRE RESISTANCE RATING STRUCTURAL FRAME (0 HOUR)  
 FIRE RESISTANCE RATING OF EXTERIOR BEAMS (MIN) 2 HOURS  
 FIRE RESISTANCE RATING OF EXTERIOR WALLS (MIN) 2 HOURS  
 FIRE RESISTANCE RATING FLOOR CONSTRUCTION (0 HOUR)  
 FIRE RESISTANCE RATING ROOF CONSTRUCTION (0 HOUR)  
 CORRIDOR RATING (0 HOURS)  
 STAIR RATING = 1 HOUR

MEANS OF EGRESS  
 CAPACITY OF ASSEMBLY = 2' X 400 OCCUPANTS = 80"  
 NO LESS THAN 50% CAPACITY OF EXIT =40"  
 PANIC HARDWARE REQUIRED WHERE > 50 OCCUPANTS  
 MINIMUM REQUIRED CORRIDOR WIDTH - 44"  
 ROOF ACCESS- NA

DRAFTSTOPPING OR SPRINKLE CONCEALED SPACES NA  
 STANDPIPE (<20 FT ABOVE GRADE) NA  
 FIRE DEPT. CONNECTION REQUIRED

REFERENCE  
 6. 1,14.3

NFPA 101 - 2009  
 ASSEMBLY OCCUPANCY  
 SPRINKLED W/NFPA 13  
 CONSTRUCTION TYPE III(000)

CONSTRUCTION TYPE LIMITATIONS OF TYPE III(200) 12.2.5.1,2  
 1ST FLOOR = MAX 1000 OCCUPANTS 12.2.5.4,2  
 2ND FLOOR MAX 300 OCCUPANTS 12.2.2.12.1

COMMON PATH 20' > 50 OCCUPANTS , 75'<50'  
 DEAD END CORRIDOR < 20'  
 AREA OF REFUGE NOT REQUIRED

CAPACITY OF ASSEMBLY = 2' X 400 OCCUPANTS = 80"  
 NO LESS THAN 50% CAPACITY OF EXIT =40"  
 FINISHES IN BLDG TO BE CLASS A OR B

ALARM BY SPRINKLER, MANUAL, NOT REQUIRED 12.3.4.2.1(b)

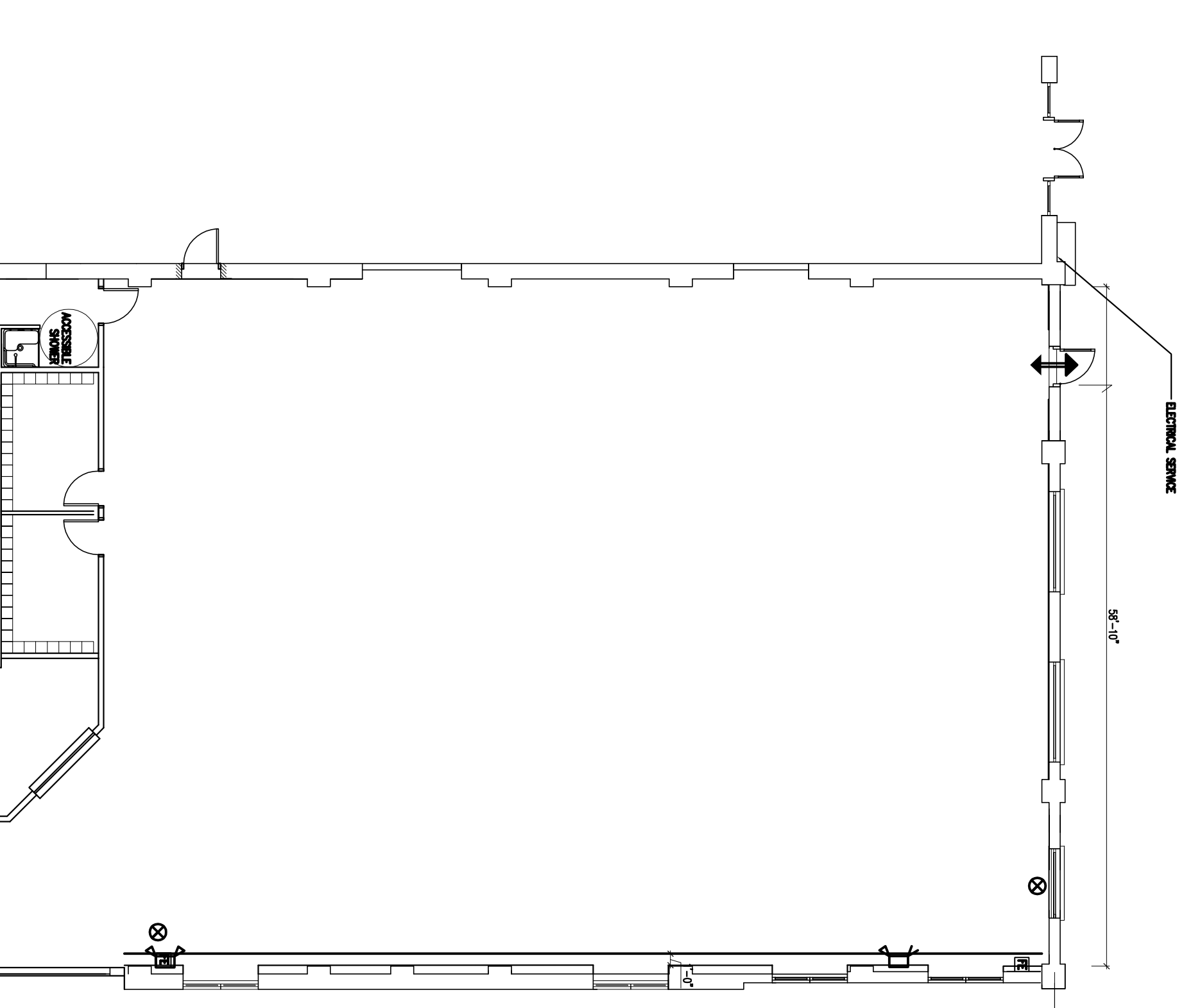
- 504.2  
 T801  
 T801  
 T801  
 T801  
 T801  
 T801  
 1018.1  
 1018.1

- 1005.1  
 1005.1  
 1008.1.10  
 1018.2  
 1009.13.1

717.3.2 (EX. 2)  
 905.3.1  
 903.3.6 (AS DIRECTED BY FIRE)

REFERENCE  
 310  
 903.0.1.1

T12.1.6



## CONTACTS

**Developer:**  
 Thompson's Point  
 Development  
 55 Lisbon Street  
 Lewiston, ME  
 04240  
 (207) 347 1614

**Architect:**  
 Arctetype Architects  
 48 Union Wharf  
 Portland, ME  
 04101  
 (207) 772 6022

**Civil Engineer:**  
 Fay, Spofford & Thorndike  
 778 Main Street, Suite 8  
 South Portland, ME  
 04100