

Prepared For:



Consultant:

ARCHETYPE
48 Union Wharf Portland, Maine 04101
(207) 772-6022 Fax (207) 772-4056

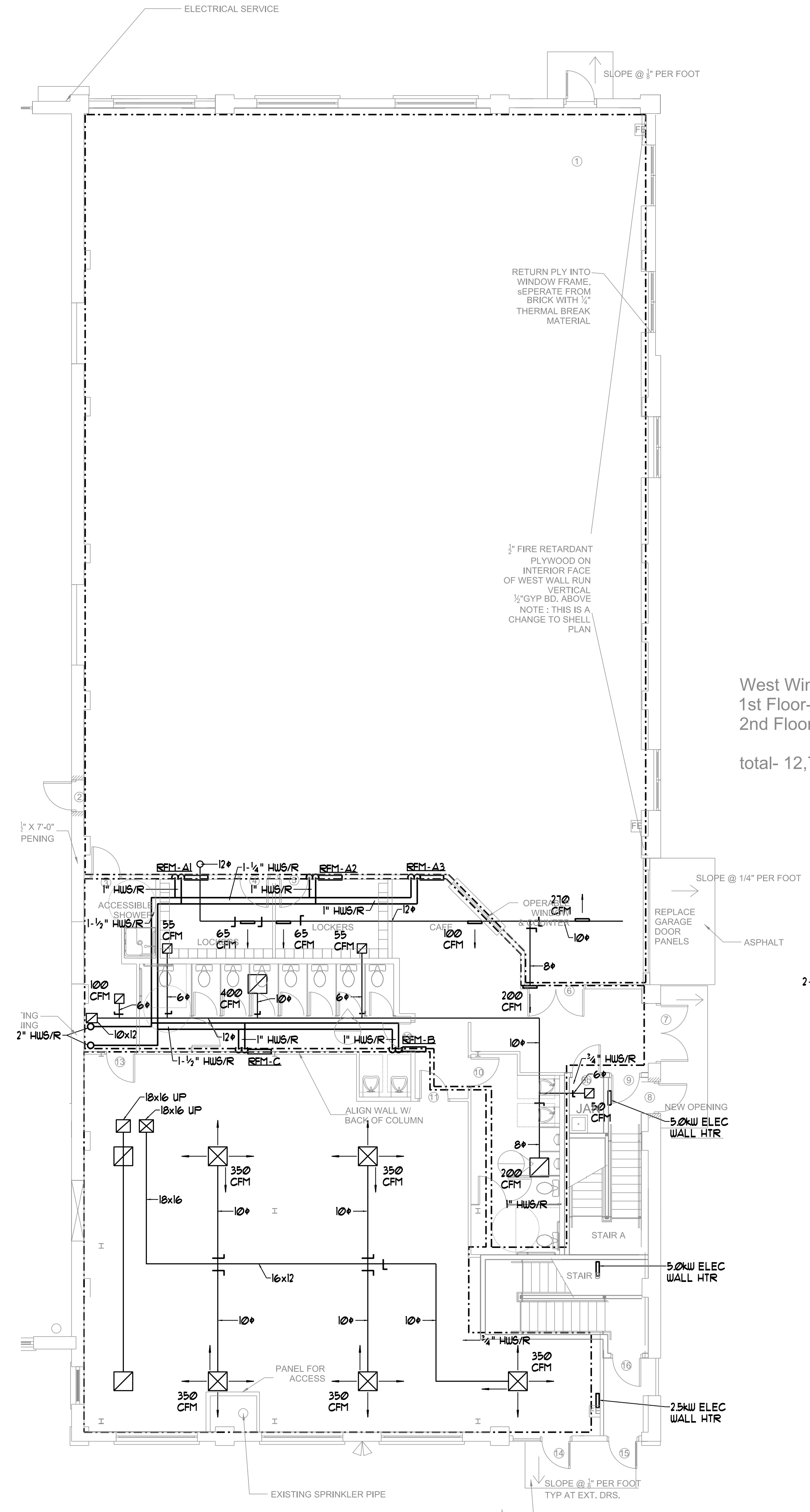
Project: BRICK NORTH WEST WING
THOMPSON'S POINT, PORTLAND ME

Revisions:
ISSUED FOR PERMIT

Scale: 1/8" = 1'-0"

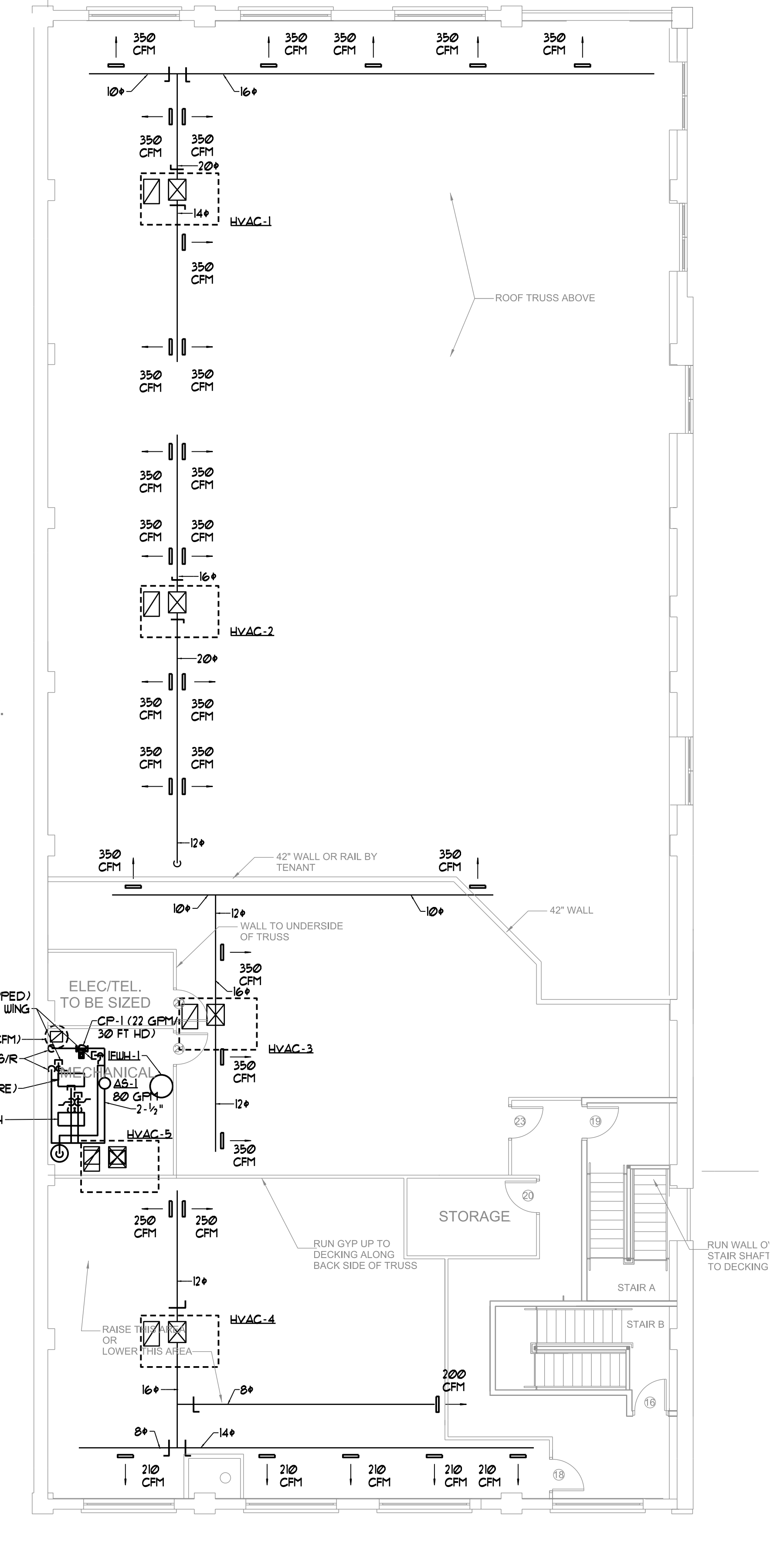
Date: 8-15-2014

M1



FIRST FLOOR MECHANICAL PLAN
SCALE - 1/8" = 1'-0"

West Wing
1st Floor- 8,885 s.f.
2nd Floor- 3,912 s.f.
total- 12,797



SECOND FLOOR MECHANICAL PLAN
SCALE - 1/8" = 1'-0"