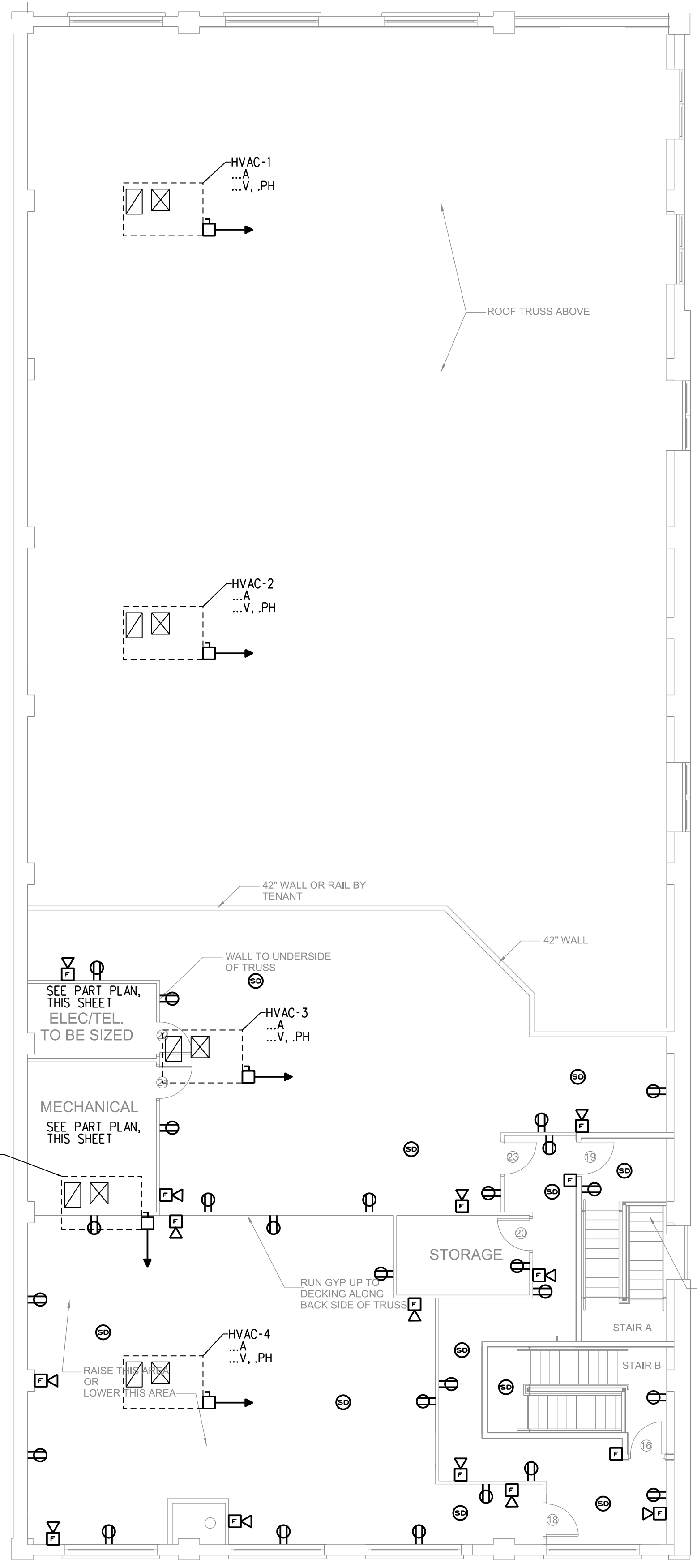
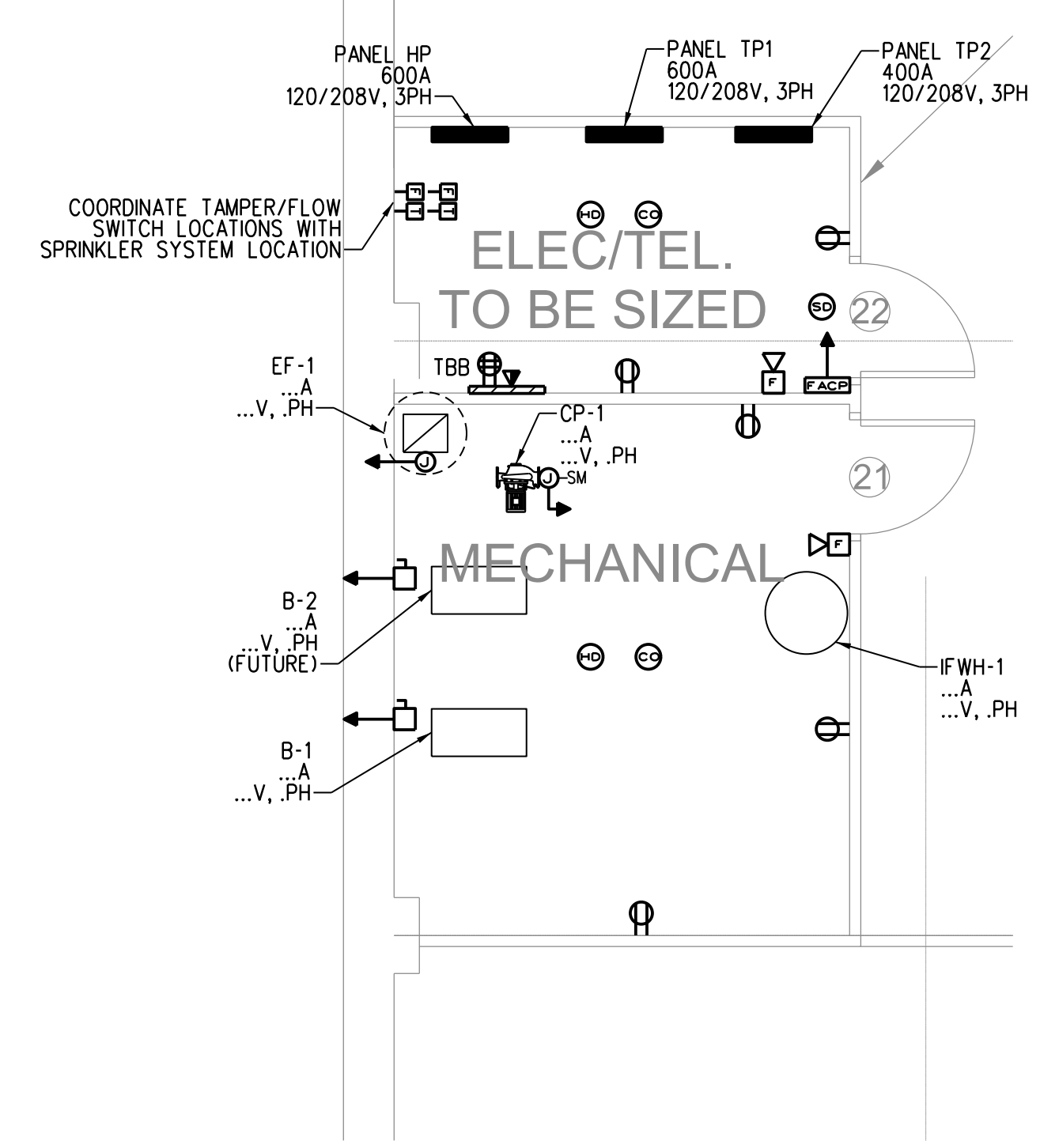


FIRST FLOOR PLAN
SCALE: 1/8" = 1'-0"

West Wing
1st Floor- 8,885 s.f.
2nd Floor- 3,912 s.f.
total- 12,797



SECOND FLOOR PLAN
SCALE: 1/8" = 1'-0"



MECH/ELEC PART PLAN
SCALE: 1/4" = 1'-0"

<p>Prepared For:</p>
<p>Consultant:</p> <p>BENNETT ENGINEERING MECHANICAL - ELECTRICAL 007/060495</p>
<p>Architect:</p> <p>ARCHETYPE</p> <p>48 Union Wharf Portland, Maine 04101 (207) 772-6022 Fax (207) 772-4056</p>
<p>Project:</p> <p>BRICK NORTH WEST WING</p> <p>THOMPSON'S POINT, PORTLAND ME</p>
<p>Revisions:</p>
<p>Date: 8-15-2014</p>
<p>Scale: 1/8" = 1'-0"</p>
<p>ISSUED FOR PERMIT</p>
<p>POWER FLOOR PLANS</p>
<p>E2.01</p>