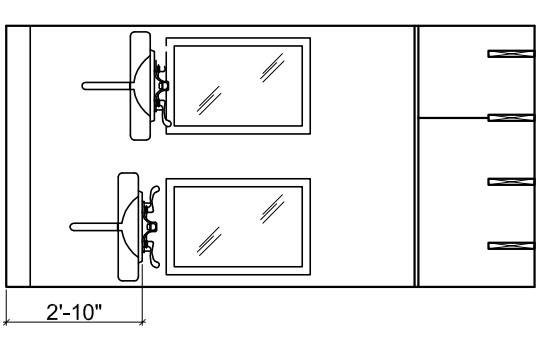
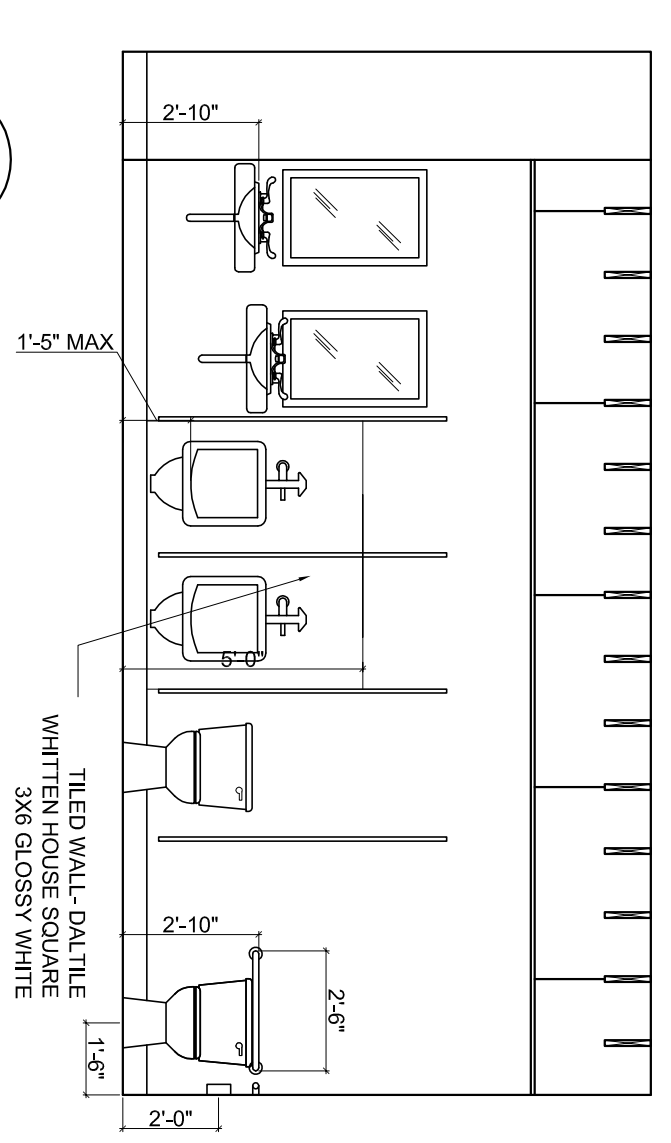


1
A4.01
1/4" = 1'-0"



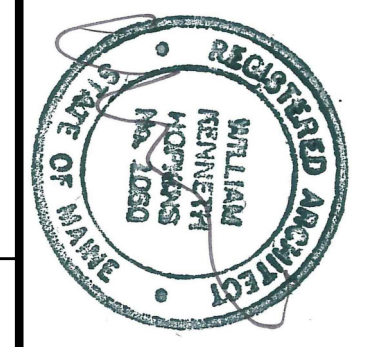
1b
A4.01
1/4" = 1'-0"



2
A4.01
1/4" = 1'-0"

DOOR SCHEDULE

NUMBER	ROOM	DIMENSIONS	MATERIAL	HDW SET	COMMENTS
1	S ENTRANCE	3'-6" X 7'-0"	GLASS AND ALUM	PANIC CLOSER	
2	EAST WALL	3'-0" X 7'-0"	HOLLOW METAL	DOUBLE DEADBOLT	3-HR RATED
3	SHOWER A	3'-0" X 7'-0"	HOLLOW METAL	PRIVACY CLOSER	
4	EAST LOCKER	3'-0" X 7'-0"	HOLLOW METAL	PASSAGE CLOSER	
5	WEST LOCKER	3'-0" X 7'-0"	HOLLOW METAL	PASSAGE CLOSER	
6	CCA ENTRY	2(3'-0" X 7'-0")	HOLLOW METAL	PANIC CLOSER	VISION PANEL
7	WEST MAIN ENTRY	2(3'-0" X 7'-0")	GLASS AND ALUM	PANIC CLOSER	
8	STAIR A EXTERIOR	3'-0" X 7'-0"	GLASS AND ALUM	EXIT CLOSER	
9	STAIR A VEST	3'-0" X 7'-0"	HOLLOW METAL	PASSAGE CLOSER	1 HR RATED, VISION PANEL
9B	JANITOR	3'-0" X 7'-0"	HOLLOW METAL	STOREROOM	
10	MENS TOILET	3'-0" X 7'-0"	HOLLOW METAL	PASSAGE CLOSER	
11	COMM REAR EXIT	3'-0" X 7'-0"	HOLLOW METAL	ENTRY CLOSER	
12	WOMENS TOILET	3'-0" X 7'-0"	HOLLOW METAL	PASSAGE CLOSER	
13	SHOWER B	3'-0" X 7'-0"	HOLLOW METAL	PRIVACY CLOSER	
14	COMM NORTH	3'-0" X 7'-0"	GLASS AND ALUM	ENTRY CLOSER	
15	STAIR B EXTERIOR	3'-0" X 7'-0"	HOLLOW METAL	EXIT CLOSER	VISION PANEL
16	STAIR B VEST	3'-0" X 7'-0"	HOLLOW METAL	PASSAGE CLOSER	1 HR RATED, VISION PANEL
17	STAIR B 2ND	3'-0" X 7'-0"	HOLLOW METAL	PASSAGE CLOSER	1 HR RATED, VISION PANEL
18	MAINE ART	3'-0" X 7'-0"	HOLLOW METAL	ENTRY CLOSER	
19	STAIR A 2ND	3'-0" X 7'-0"	HOLLOW METAL	PASSAGE CLOSER	1 HR RATED, VISION PANEL
20	MEZZ A	3'-0" X 7'-0"	HOLLOW METAL	STOREROOM	
21	MECHANICAL	3'-0" X 7'-0"	HOLLOW METAL	STOREROOM	
22	ELECTRICAL	3'-0" X 7'-0"	HOLLOW METAL	CONFIRM ELEC. EQUIP	
23	MEZZ B	3'-0" X 7'-0"	HOLLOW METAL	STOREROOM	
24	STORAGE	3'-0" X 7'-0"	HOLLOW METAL	ENTRY CLOSER	
25	STORAGE	3'-0" X 7'-0"	HOLLOW METAL	ENTRY CLOSER	



Prepared For:

Consultant:

Architect:
ARCHETYPE
48 Union Wharf Portland, Maine 04101
(207) 772-6022 Fax (207) 772-4056

Project:
BRICK NORTH
WEST WING
THOMPSON'S POINT,
PORTLAND ME

Revisions:
8-13-14 ISSUED FOR PERMIT

Scale:
AS NOTED

Date:
8-13-2014
INTERIOR ELEVATIONS
& DOOR SCHEDULE

A4.01